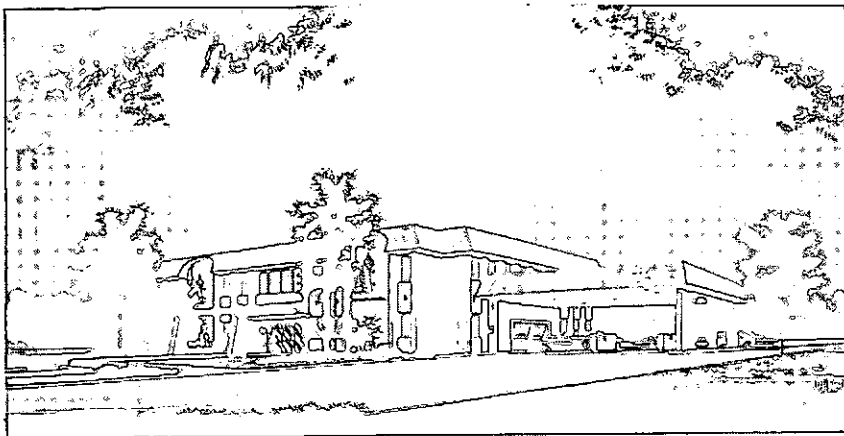




The Village
 Almanac
 OFFICIAL PUBLICATION OF THE
 VILLAGE OF BLOOMINGDALE

December 1975, Vol. 1 No. 2

*Bloomingtondale Welcomes
 American Heritage*



American Heritage Savings and Loan begins the Grand Opening celebration for its new facility at 261 E. Lake Street on December 11th. The move from a temporary facility into the attractive building shown above, was made on November 17th. The Association is occupying the first floor, and the second floor offices are available for lease.

American Heritage represents the third major financial institution to open its doors in Bloomingtondale.

Full service is provided in all departments and the facility will also feature three drive-up windows.

\$25,000 Grant For Village Of Bloomingtondale

The Village of Bloomingtondale has been selected to receive a \$25,000 grant for planning of the "Old Town" area. The grant is offered under the Housing and Community Development Act of 1974.

In order to receive these funds, the Village must execute a contract with DuPage County.

The study and improvement area is generally described as follows:

PARCEL A
 The southern border is Schick Road bounded by Bloomingtondale Road on the East, Day Street on the west and Lake Street on the north; and,
PARCEL B

The southern border is Lake Street, bounded by Day Street (extended) on the west, Bloomingtondale Forest Preserve No. 3 on the north and on the east by general property line running 350 feet east of Bloomingtondale Road.

The purpose of this study is to determine the most appropriate use of the property, to study the preservation of the architectural and historic significance of certain structures, to recommend methods for improving substandard structures, to prepare an internal traffic system, and to evaluate the general engineering required to accommodate recommended public improvements.

*Schick Road
 Federal Funding*

The largest Federal grant in Bloomingtondale's history, approximately \$360,000 will go toward a major improvement of Schick Road in 1976. Total cost of the project, which will begin this spring, is \$600,000 with the Village paying 40 percent of the contract.

The two-lane concrete road will run from Bloomingtondale Road to a point approximately 1500 feet west of Cardinal Drive.

Bids were opened for the project on October 14, and the contract was awarded to DiPaolo Construction.

Consideration is being given to an extension of the improved road to the east of Bloomingtondale Road, however, no decisions have been made at this time.



Season's

Greetings



The study could result in the preparation of a plan for unified growth and development, while attempting to preserve the architectural and historic significance of the area. The plan will be capable of serving as an amendment to the Bloomingtondale Comprehensive Community Development Plan.

The study will consist of the following work items:

1. Evaluation of existing conditions including land use, traffic, historic buildings and community facilities.
2. Development of land use alternatives.

Continued on page 3

Village Notes

COMMENTARY

HOME RULE:

BLESSING OR BUST?

Home rule is an issue which Bloomingdale may face again considering its fantastic growth rate since 1970 and projections which predict nearly 40,000 residents by 2000.

This growing citizenry does and will continue to demand adequate municipal services such as fire, police and public health protection at a reasonable cost to taxpayers.

In April, 1974, Bloomingdale voted against home rule 418 to 311. A major reason cited for the defeat was voter concern of increased taxing power for the village. Home rule supporters say it would allow Bloomingdale to use taxing powers such as amusement taxes to benefit the community without burdening local taxpayers.

Home rule permits municipalities to exercise powers unless specifically denied by the 1970 state constitution or state statute. A home rule unit has the right to license, to tax, to incur debt and to conduct government functions pertaining to but not solely limited to protecting public health, safety, morals and welfare. Obviously, effective home rule requires that local residents work to assure that municipal government uses its expanded powers in the public interest. At present more than 70 percent of Illinois' citizens reside in home rule municipalities.

Without home rule, local governments have only those powers specifically granted or which can necessarily be implied from existing state statutes. If such statutes are silent on certain powers, local government cannot exercise them. Consequently, a municipality without home rule could find itself in situations where existing law limits its capacity to act in the community's best interest.

Home rule may or may not be right for Bloomingdale. Let's hope, however, that should the issue arise again, its supporters and detractors present their cases in ways which assure that voters decide the question solely on merit.

by Dean Dranias

Blood Drive Update

In the event of any occurrence which may lead to the need for donor blood, all residents of Bloomingdale are automatically covered under the Blood Assurance Program.

Now in its second year, the Program contract, with a population of 8,788, must fill a quota of 348 pints of blood.

Any healthy adult between the ages of 17 and 65 is eligible to donate, and is encouraged to do so on January 17th at Winnebago School from 9 a.m. to 4 p.m.

There will be an Appreciation Get-Together for all donors and workers on April 4th at 2 p.m. at the Marklund Home. Certificates will be given to gallon donors.

Blood assistance is obtained by calling the Bloomingdale Police Department at 529-3341.

Bicentennial Commission

Christmas Tree Lighting

Bloomingdale's Bicentennial Commission invites everyone to attend Christmas Tree Lighting Ceremonies, Friday evening, December 12th at the New Park District Building.

The event is part of the commission's calendar of activities in observance of the nation's 200th anniversary in 1976. The tree lighting ceremonies will feature Christmas Caroling. Hot chocolate will also be served.

The Village Almanac is published quarterly by the Public Relations Committee of the Village of Bloomingdale.

Editor
William Hicks

Staff
Dean Dranias
Valerie Dranias
Judy Kuhel
John McGeever
Lorraine Reed

Advisor
Stephen Salvesen

Address all correspondence to:
Village of Bloomingdale, Public
Relations Committee, 108 W.
Lake St., Bloomingdale, Ill. 60108.

The Library Grows

The Bloomingdale Library released a rather impressive figure this past month. Over 25 percent of all Village residents are now registered borrowers.

Much of the credit for this progress goes to Head Librarian, Sue Schlaf, who has made the library such a pleasant place to visit.

The library continues to offer a wide variety of services and activities. Beginning in January, a film program for children ages five to twelve will be presented each Saturday morning from 10:30 to 11:00 a.m.

In February, the preschool children's story hour will resume, and will include a seminar for mothers who attend. The program, entitled "Living With Your Preschooler", is offered by the DuPage County Mental Health Department.

On February 19th, a special Bicentennial program, featuring photographic pictorialist, J. Meredith Watkins, will begin at 7:30 p.m. in the library. The program is designed to depict the similarities between Galena, Illinois, and Mineral Point, Wisconsin.

Santa Claus Is Coming To Town

Would you like to surprise your child with a visit from Santa Claus? Then the Santa for St. Jude Project, sponsored by the Delta Chi Chapter of ESA, is for you.

Male volunteers, dressed as the big, fat man in the long, white beard, go on pre-arranged visits to the homes of those who call in and make appointments. There is a \$5.00 donation per family; \$10.00 on Christmas Eve.

If you wish to have Santa as a guest at one of your parties; the donations start at \$25.00. All contributions go to the St. Jude Children's Hospital Fund, and are tax deductible.

For more information about this worthy (and fun) project, call 893-3324, and watch for circulars.

Glenbard Teachers Settle

District 87 teachers approved a new contract on November 13th ending nearly six months of negotiations. By a vote of 279 to 62, teachers accepted a \$550 retroactive increase at the base with no change in the multiplier at the upper levels. Changes were also negotiated in the extracurricular increment schedule.

Negotiations broke down late in the summer and a fact finder was called in during the month of October. Both sides accepted the fact-finder's recommendations.

In other news, The District Administrative Center released a rather discouraging report to district educators during November. A projected increase of 10 percent in the 1975

Assessed Valuation has been reduced to an estimated 4 percent to 4.5 percent.

To accomplish the Board of Education's goal of a balanced budget for the 1976-77 school year, it would be necessary to make an additional reduction of approximately \$400,000 in the district budget. This reduction is largely the result of the new Equal Assessment Law.

Special meetings have been held with building administrators and department chairmen throughout the district to determine how this reduction can best be made without seriously damaging the educational program; no action has been taken at this time.

New Director Appointed

Bloomington has a new Director of Public Works. On October 20, Mr. William J. Carroll, a registered professional engineer, was appointed to the position.

Mr. Carroll comes to Bloomington from the Village of Glendale Heights where he served as Village Engineer. He has also been the Building and Zoning Director for the Village of Carol Stream in recent years, and has a broad range of experience in industrial engineering.

Mr. Carroll describes his position in the Village as "the kind of job I've always wanted." He added, "I'm not here to do well for myself, I want to do well for the Village."

More Village Notes

Food Co-Op

One of the largest food cooperatives in the western suburbs, BFC, Inc., is now in full operation in Bloomington. The central purpose of this corporation is to obtain better food prices for meat, cheese, produce, and dairy products.

Membership in the cooperative is limited to the number of jobs available. Currently there are 100 families participating. The one-time membership fee is presently \$25 per family, and in addition, each member must perform a job assignment once a month.

Anyone interested in becoming a member may apply to the membership chairperson, Judy Kuhel, 529-2402, to be placed on the waiting list.

Lions Pancake Day

More than 1500 parents and youngsters got their fill of pancakes and sausages, Sunday, November 16, during Lions Pancake Day.

The event which is the annual fall-fund raiser for the Bloomington Lions was held from 8 a.m. to 1 p.m. at DuJardin School.

This year's proceeds will go toward the purchase of recreational equipment for the new Park District Building.

Along with the breakfast, Pancake Day included a raffle, door prizes and a bake sale. The first 200 youngsters under 12, accompanied by a parent received McDonald's gift certificates.

Vehicle Stickers

All vehicles which are operated by other than solely manual power are required to be registered by the Village. Stickers must be displayed on the vehicle by February 15th of each year. New residents are given 30 days from the date of occupancy in which to apply for a Village Vehicle License.

BWC Children's Christmas Party

The Bloomington Women's Club conducts its annual Christmas Party, Saturday, December 13, from 2 to 4 p.m. at DuJardin School. Club members, their children and youngsters from Marklund School will receive presents, visit with Santa Claus and feast on Christmas candy.

Come To The Ball

The Bicentennial Commission hosts its Bicentennial Ball, February 20, 1976 at Indian Lakes Country Club. Miss Bloomington Bicentennial will be crowned at the Ball. Information on the Miss Bloomington Bicentennial contest will be available shortly from the Commission.

Attention Dog Owners

The Village requires all dogs to be inoculated against rabies and to have a license. Present the rabies certificate at the Village Hall, along with a \$3.00 annual fee, and you will receive a license for your pet. This may be done each year from December 1st through February 15th.

We all love our pets, but not everyone feels the way you do about your own. Remember that there is a leash law in the Village of Bloomington, and that it is designed to show courtesy to all residents.

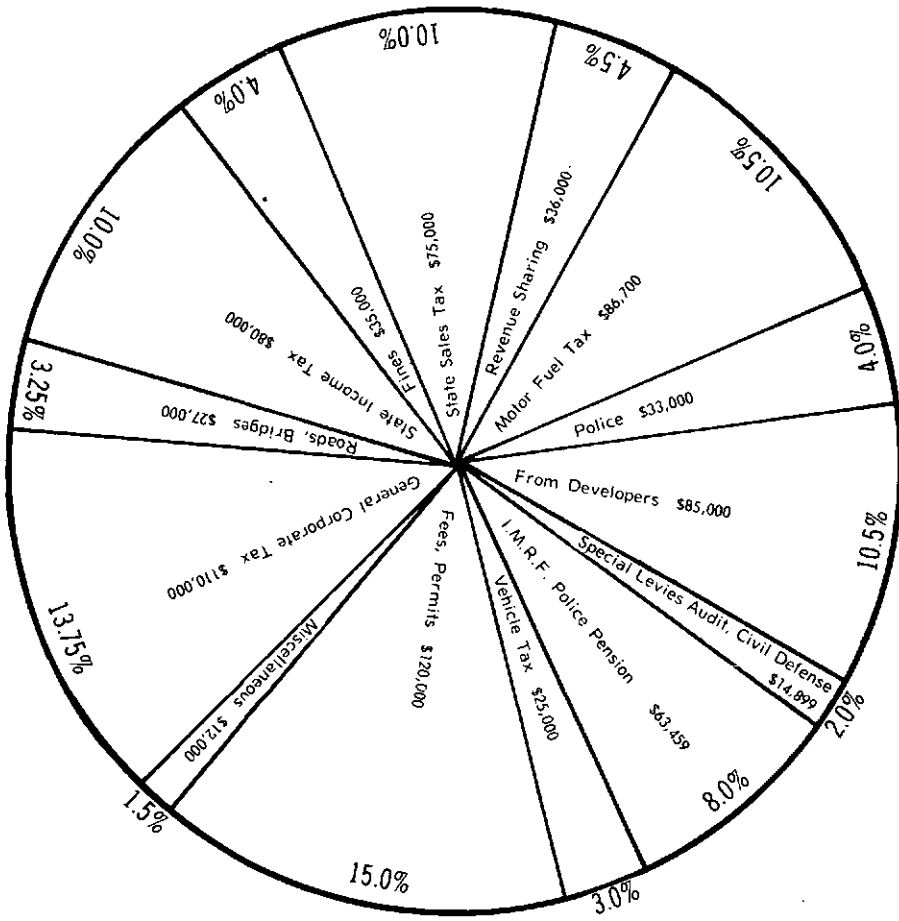
Please do not allow your pet (cat or dog) to roam the streets. Take the opportunity to be a thoughtful, considerate neighbor, by keeping your pet confined unless it is leashed and walking with its owner. Also, it would be a big help if the owner carried a shovel and receptacle for interception of any messages his pet may leave in anyone's yard along the way.

COD

Did you know the College of DuPage has an enrollment of approximately 2,000 veterans?

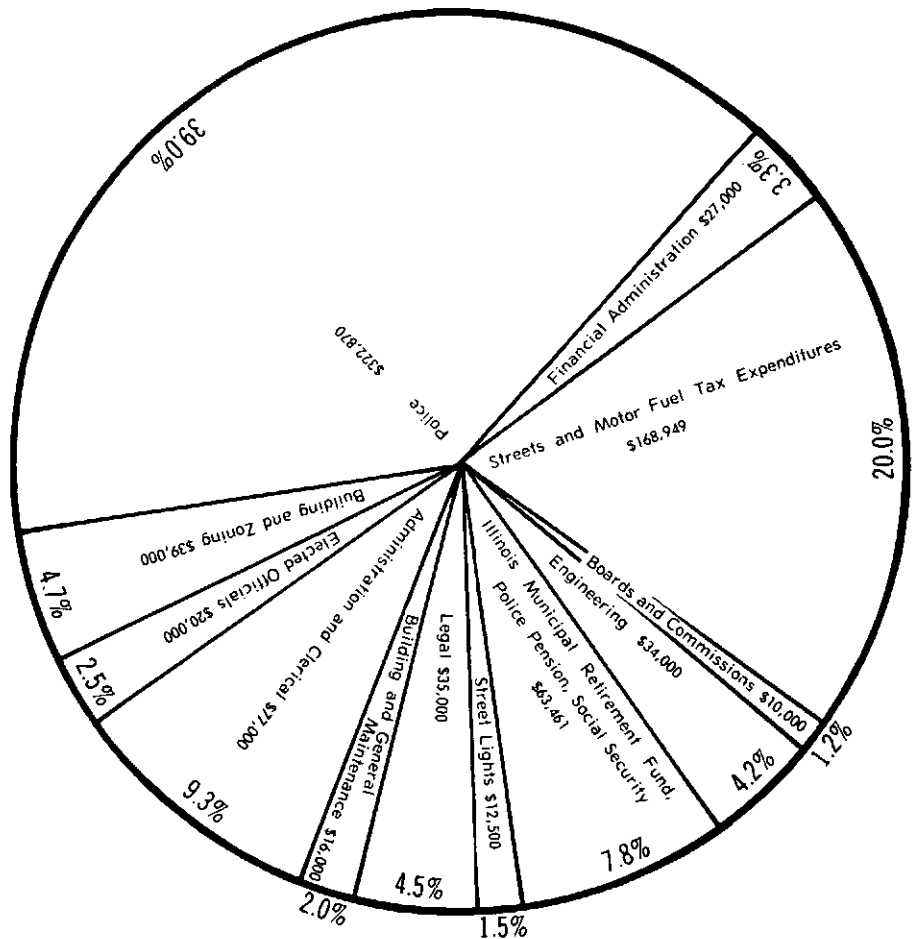
In an effort to serve these veterans who have served our country, the Placement Office at the College of DuPage has embarked on a project entitled "Jobs for Veterans". If you have or anticipate any part-time or full-time temporary or permanent jobs, you may place your openings by contacting the Placement Office, College of DuPage, at 858-2800, extension 230 or 231, between the hours of 8:30 a.m. and 5 p.m. Monday through Friday.

Revenue And Expenditures For The Village of Bloomingdale



SOURCES OF REVENUE

EXPENDITURES



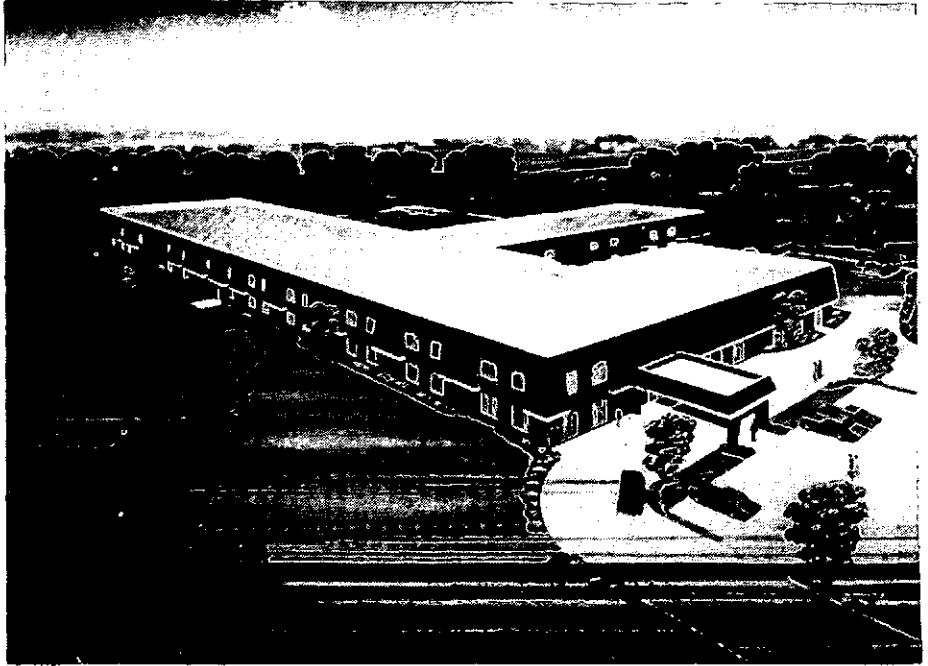
Lexington House Opens

Among the many new establishments which are serving to make our village one of the fastest-growing suburbs in the Chicagoland area, is Lexington House of Bloomingdale, located at 211 Edgewater Drive.

Lexington House will offer Restorative Nursing in a Skilled level, 206 bed facility. Restorative Nursing consists of four levels of care:

1. General physical,
2. Activities therapy
 - a) remotivation
 - b) reality orientation
 - c) crafts
 - d) socialization,
3. Physical rehabilitation (within one year)
4. Social rehabilitation (within the year)

This facility fulfills all major nursing needs, and while it is largely geriatric, is not exclusively so.



FUTURE PLANS

According to Mr. Jim Taylor, Director of Lexington House, it takes about a year to get a full program in operation. Within the next year, in addition to numbers 3 and 4 above, there are plans to have a gift shop, craft shop (with residents of the home supplying the items to be sold), and a candy store.

VOLUNTEERS

As in any nursing facility, volunteers play a vital role in its smooth operation. The Volunteer Program is under the supervision of the Activities Director. Volunteers will be assigned to help with social hours, letter writing, reading, or simply talking and visiting. They will also be in

charge of operating the shops when they are completed.

OPEN DOOR POLICY

Lexington House of Bloomingdale wishes to stress that it is open for community inspection at any time, as it is a part of the community, and one of which Mr. Taylor feels we can all be proud.

New Business In Bloomingdale

Several new commercial ventures are being planned in our village for 1976. Although no specific completion dates are available at this time, most of the projects mentioned here are tentatively scheduled for completion in late spring or early summer.

On Army Trail Road near the new Regency Terrace Apartments, a restaurant and convenience center will be open for business in the near future.

At Edgewater Drive and Glen Ellyn Road, plans are under way for a Pizza Hut Restaurant, and to the North of this location, Bloomingdale will soon have its first animal hospital.

On the south side of Lake Street at Fairfield Avenue, a Golden Bear Family Restaurant will soon be under construction.

For the northeast corner of Glen Ellyn Road and Army Trail Road, a small shopping center is being planned pending approval of a special use permit.

Two new office buildings are also scheduled for the coming months - one at Fairfield Avenue and Schick Road; the other just west of the new American Heritage Savings and Loan on Lake Street.

We extend an enthusiastic welcome to all of these new businesses.

\$25,000 Grant

From page 1

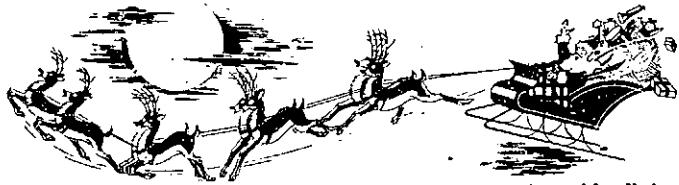
3. General review of engineering needs for water and sewer.

4. Assessment and recommendations for improving substandard street uses.

5. Recommendations for architectural and landscape architectural treatment.

6. Preparation of a total plan for improving "Old Town" and environs and for creating a unique commercial core for the downtown area of Bloomingdale. It is intended that the plan will encourage varied forms of commercial and residential land uses which are needed by Village residents.

Winter Fun



Are you a Winter Freak, (i.e., someone to whom the sound of snow crunching beneath his feet is second only to the Hallelujah Chorus)? Or are you among the poor unfortunates who simply need diversion during the frozen months in order to preserve their sanity? In either case, there are activities available which are designed to make winter enjoyable.

When the green flags are flying at Lakeview Park or Westlake in Bloomington, conditions are right for ice skating. There are also several small ponds in the Indian Lakes area which freeze and become solid enough for safe skating.

Villa Olivia Country Club in Bartlett has a full program for skiing and ski instruction. They have a new hill equipped with a quad chair, in

addition to eight other runs - four for beginners, two for intermediates, and two for advanced skiers. They will open on December 6, weather permitting, and if you want more information call 231-4913.

What could be more fun than a sleigh ride? Prince Crossing Stables in West Chicago offers them, plus hay rides, at a 10 percent discount Tuesdays through Fridays. Regular rates apply on weekends, and they are closed on Mondays. For more information call 231-4913.

The Bloomington Park District is offering Ski trips to the Playboy Club at Lake Geneva, the first of which will be on January 9th, with two more scheduled for sometime in February.

Those interested should call the Park District office for more information.

Taking advantage of all the delightful outdoor activities can help you to appreciate and enjoy the cold months, and perhaps turn you into a Winter Freak!

Voter Registration

Are you a registered voter? All new residents and-or first-time voters are encouraged to register at the Village Hall at any time during regular business hours. There are four registrars on duty at all times to help you exercise your right to vote in the upcoming national elections.

VILLAGE OF BLOOMINGDALE
108 West Lake Street
Bloomington, IL 60108

BULK RATE
US POSTAGE
PAID
Bloomington, Ill.
60108
Permit No. 16

POSTAL PATRON, LOCAL
BLOOMINGDALE, ILLINOIS 60108

Help Wanted:

Mr. Businessman

WRITERS

Join an active Village Committee in publishing a dynamic quarterly newsletter

The Village Almanac reaches every home in Bloomington.

If you desire maximum exposure for your advertising message, call for information about sponsorship.

BE AN ACTIVE PATRON OF

Bloomington's Businesses—

It's Money In Your Pocket

Contact: William Hicks 893-1430