



# The Village Almanac

OFFICIAL PUBLICATION OF THE  
VILLAGE OF BLOOMINGDALE

Volume 3, Number 3

May, 1978

## ST. PAUL'S CENTENNIAL

St. Paul's United Church of Christ, 112 1st St., is one of Bloomingdale's most familiar landmarks. The present structure has been standing since 1914, but the church community has been in existence since 1878, when the German United Evangelical Lutheran St. Paul Church of Bloomingdale was founded.

In the beginning there was the Word, and the Word was spoken in German at St. Paul's. In 1919 the Rev. J. H. Holdgraf instituted one English service per month.

The Rev. E. M. Plassmann became pastor in 1923. The following year St. Paul's became one of the first users of electricity in Bloomingdale. At this time English services were increased to two per month.

In 1957 the Evangelical and Reformed Church joined with the Congregational Christian Church to form the United Church of Christ; St. Paul's was one of the first to adopt the new name. A building program was begun in 1958 to accommodate the growing Sunday School, and 1959 saw a modern educational wing added to the church building.

Over the years since its inception, St. Paul's has undergone many changes. Gradually English became the dominant language. In 1960 the last German service was held.

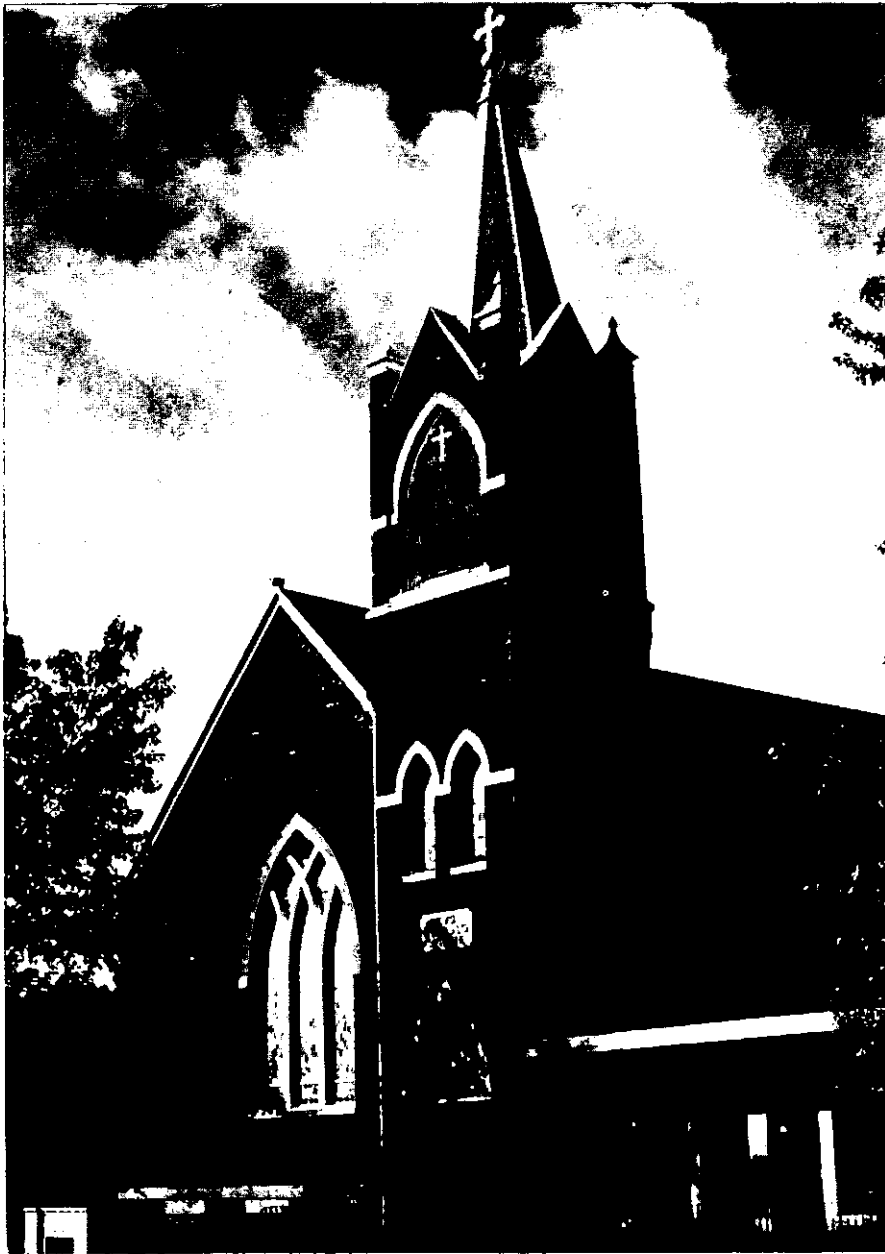
St. Paul's present pastor, the Rev. James P. Beecken, assumed his duties on July 1, 1967, and continues to provide the spiritual leadership to carry on the work begun one hundred years ago.

Part of that work is the maintenance of the Bloomingdale Memorial Cemetery, located on Lake Street near Circle Avenue. The cemetery was founded on June 19, 1847, and has been in active use since that date. As such, its tombstones portray our history since its inception.

The west half of the cemetery was founded first by English settlers. In about 1879 the German Evangelical Congregation founded the east half. The two halves remained separate until April of 1963. Those supporting the English portion could not continue to absorb the costs involved. They asked St. Paul's to maintain the entire cemetery, giving the church the funds remaining. A trust was established with the combined funds. The income from that trust pays for minimal maintenance such as mowing and clipping.

St. Paul's is very much a modern church, but one with a rich history. It's congregation is working to preserve its history and that of the Village of Bloomingdale by carrying on the cemetery maintenance.

Happy birthday, St. Paul's, and many happy returns!



*St. Paul's United Church of Christ, one of Bloomingdale's most familiar landmarks, celebrated its 100th birthday this May.*

# MORE SPONSORS!

With this issue of the ALMANAC we have gone to 12 pages, primarily to accommodate a greater amount of advertising without making the ALMANAC appear like a daily newspaper. This publication is the official newspaper for the Village of Bloomingdale. Its primary purpose is still to inform the citizens of newsworthy events occurring in the Village.

By providing a greater amount of advertising we are making more people aware of businesses within the Village. Hopefully, this knowledge will encourage people to buy in Bloomingdale. Everyone in the Village benefits from the increased sales tax revenue as 20% of all sales taxes collected in the Village are returned to the Village. Last year this figure exceeded \$100,000.

Additionally many new people moving into the Village are unaware of what goods and services are available in the Village. We hope to inform people of this.

There is still another reason for the advertising: it pays for the cost of printing. In this issue, for example, all of our printing costs (approximately \$1,000.00) will be supported by advertising.

The business people who have taken ads recognize that they are supporting the ALMANAC, as our rates are higher for the comparable circulation than the commercial dailies or weeklies available in the Village. At the same time, they appreciate the fact that the ALMANAC is delivered to every home in the Village.

We have instituted controls to assure that the advertising does not get out of hand. We reserve the right to limit the size of the ad, its placement and the copy provided. We also reserve the right to refuse a new advertiser.

We want to continue making the ALMANAC informative to all people in the Village. We hope you can understand our reasons for expanding the size. As always, we welcome your comments.

**THE EDITOR.**

## HELP!!!

We need people! The Public Relations Committee needs members to help with the busy job of producing the Village Almanac. If you would like to assist us in writing articles, doing layout work, or editing, please contact Judy Kuhel at 529-2402.

# VILLAGE HALL HAPPENINGS

by

Paul Greening

## STATUS OF ROAD REPAIRS

Road resurfacing completed last year in both Lakewoods and on Cardinal Drive has been the cause of many residents' complaints.

At the direction of the Board, DPW Director Bob Mundo has met with the outside engineers who have evaluated the causes of the deterioration. Should the original firms involved be unable or unwilling to make necessary repairs, the Village will authorize that the work be completed by another firm and bill the original contractors.

## BICYCLE STICKERS

If you have recently acquired a new bicycle, be sure to stop by the Village Hall and get your sticker. By registering the bicycle serial number, the police can often recover a stolen bicycle. The \$.50 fee is a one-time charge. So stop bicycle thieves. Get your sticker at the Village Hall.

## EUCLID AVENUE OPENING

The Board of Trustees approved the extension of Euclid Avenue between the Suncrest Subdivision and the Westlake Highland Subdivision in accordance with the annexation agreement established at the time of initial development of the area.

To assure maximum safety of the residents but still maintain an open access for emergency vehicles, Euclid Avenue has been made one way southbound between Tee Lane and Ironwood Drive. Additionally, the corner of Ironwood and Euclid will have a three-way stop sign. School speed zone signs will also be erected where permitted by law.

## APPOINTMENT TO POLICE PENSION BOARD

Mary Babyar of 160 N. Pleasant was appointed to fill the unexpired term of Thomas Fitzgerald on the Police Pension Board. The term expires on June 13, 1979. Mrs. Babyar, an employee of the Village Finance Department, previously served on the Bi-Centennial Commission and is currently a member of the Youth Commission.

## EDC ENCOURAGES BUSINESS IN BLOOMINGDALE

The Board recently approved the expenditure for five signs to be erected on the perimeter of the Village. The signs, eight by 12 feet, will be in blue and white with copy reading "BLOOMINGDALE ECONOMIC DEVELOPMENT COMMISSION Invites your business to grow with us." Interested businesses are asked to contact the EDC for further information.

In related action the Board also approved the publication of a 12-page brochure addressed to the needs of business and how these needs can be met in our Village. The EDC has developed a specialized mailing campaign to businesses which might have an interest in locating here.

## CRIME PREVENTION PROGRAMS

The Bloomingdale Police Department has announced that programs in crime prevention are being offered free of charge to civic groups and organizations within the Village. Program topics include Home and Personal Security, Burglary Prevention, and Vandalism Reduction. Experienced Bloomingdale officers will show the films and answer questions. Interested groups may obtain further information through Chief McMahon's office by calling 529-9868.

The Village Almanac  
is published bi-monthly by the  
Public Relations Committee of the  
Village of Bloomingdale.

Editor  
Paul Greening

News Editor  
Judy Kuhel

Production Manager  
Pat Sodomka

Advertising Manager  
Steve Novy

Staff  
Barbara Seiverth  
Renee Spencer

Photography  
Sebastian Puccio

Advisor  
Samuel Tenuto

Address all correspondence to: Village  
of Bloomingdale, Public Relations Com-  
mittee, 201 S. Bloomingdale Rd., Bloom-  
ingdale, IL 60108.

# Youth Commission at Work

by Judy Kuhel

Three new members have been approved by the Village Board of Trustees as youth representatives on the Bloomingdale Youth Commission. They are Tony Phillips, 16, Delia Garrison, 14, and Tom Johnson, 18. Chairperson Pat Puccio expressed her confidence in the choice of these three young people and is very optimistic about the future of the Commission.

The Youth Commission is already gaining a reputation for being a hardworking, well-organized group. The planned Clean-Up Day on May 13, (rain date, May 20) had netted over 150 young volunteers at press time. In the future are plans for a car wash and flower sale to raise funds for the development of services to Bloomingdale's youth.

Commission members would like everyone to see that adults and young people can work together toward establishing a true community spirit. Meetings are held on the 2nd and 4th Thursdays of each month in the community room at the Village Hall. Everyone is invited.

## Secretaries Wanted

If you are interested in keeping up your typing skills, learning more about the community you live in and earning extra spending money as well, then why not consider serving as a secretary to one of the Commissions created by our Village Board.

These advisory boards meet once or twice a month during the evening at the Village Hall and secretaries are always in demand. Shorthand is helpful, but no a necessary requirement.

If you would like more information, contact the Village Hall, 201 South Bloomingdale Road, or call 893-7000 for more details.

### HOLIDAY HOURS — MEMORIAL DAY

All Village Hall offices will be closed on Monday, May 29, in observance of Memorial Day. Offices will be open during normal business hours on May 30.

Independence Day will be observed on Tuesday, July 4. All Village offices will be open for business, however, on Monday, July 3.

# VILLAGE HALL REDEDICATION

by Paul Greening

On Sunday June 4 at noon the Village Board of Trustees will have a special meeting to rededicate the Village Hall as the Robert J. Homola Municipal Center.

Last September 26, the Board passed Ordinance Number 77-53 renaming the Hall in honor of the Mayor. At that time Mr. Homola was fighting a losing battle with cancer. Shortly after passing the ordinance, the Board learned of the Mayor's death from his brother, Ben Homola, who entered the meeting to make the sad announcement.

The current site was initially occupied in February of 1977. Prior to that time Village offices had been located in the former schoolhouse erected on Lake Street in the early 1900's. The Old Village Hall is now a focal point of the "Old Town" development.

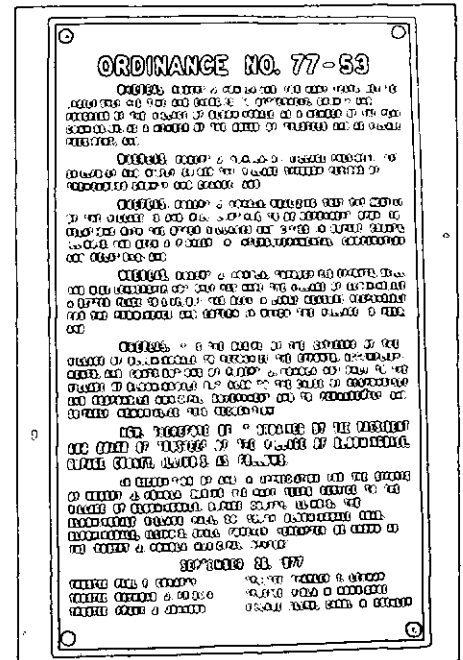
All residents of the Village are invited to attend this ceremony which will be followed by a tour of the Hall.

Mayor Morrisroe announced that the formal rededication was delayed until the landscaping had been completed and the new flagpole erected.

Featured speaker at the ceremonies will be the Honorable John Erlenborn, Representative of U.S. Congress from the Fourteenth Congressional District of Illinois.

In the Spring of 1977 Mayor Homola had been re-elected to a second term. During his tenure in office he had been Vice-Chairman of the DuPage Regional Plan

Commission, Commissioner on the DuPage County Law Enforcement Commission, Director of the DuPage Mayors and Managers Conference and a permanent member of the Northern Illinois Committee of the Illinois Municipal League.



Permanent tablet placed next to the entrance of the Village Hall.



**YOU'RE  
IN  
FIRST PLACE  
WITH**

*Blue Ribbon Realty*

**YOUR FULL SERVICE REAL ESTATE**  
Residential, Commercial, Industrial  
Owner operated • Involved in our Community

111 East Irving Park Road  
Roselle, Illinois 60172  
Telephone: 529-2235

181 South Bloomingdale Road  
Bloomingdale, Illinois 60108  
Telephone: 894-1900

# WHY ARE TAXE



*Mary Babyar loads water bill data into the newly acquired Burroughs L-9000 mini-computer.*

## “IN-HOUSE” COMPUTER SAVES

With the acquisition of the Burroughs L-9000 mini-computer, the Village is now saving more than \$200.00 per month in the issuance of water bills and processing of payrolls.

Village Treasurer, Pat Tompkins stated that in addition to the cash savings derived from internal handling, the turn-around time in processing bills has been significantly reduced.

By taking advantage of the lease-purchase agreement offered to municipalities, the Village pays for the equipment in 36 monthly installments and owns it at the end of that time.

Beginning with the new fiscal year May 1, the Village will also process the General Ledger Accounts, Accounts Payable and Cash Receipts. This will complete the present accounting system. With additional experience, new programs will be added.

---

## HEAD LIBRARIAN RETURNS

Mrs. Suzanne Schlaf, Head Librarian of the Bloomingdale Library, returned from an extended sick leave May 1st. Mrs. Schlaf has been recovering from surgery of last November.

Mrs. Patricia Chanley, Children's Librarian, has been interim Acting Librarian in Mrs. Schlaf's absence.

Within the past month property owners in the Village received their tax bills from the DuPage County Tax Collector. No one likes higher taxes. Politicians especially at the Township, County and State levels have expended many words in attempting to escape the wrath of the taxpayers by putting the *blame* on someone else as well as making all sorts of promises to find relief for rising costs.

Much as we would all like to see some relief, few believe that anything will happen.

Press releases have caused more confusion than clarification. In an attempt to shed some light on the subject, the ALMANAC sat down with Village Administrator Bob Reeves to discuss the current tax situation.

*Bob, how much has the Village increased its revenue this year from last year as a result of the increase in our tax bills?*

Based on a levy of \$.8135 per \$100 and a 1977 assessed valuation of \$60,765,000 we will receive approximately \$494,300 this year. This includes about \$100,000.00 for the Library. Last year our levied rate was \$.7191, the Assessed Valuation was approximately \$50,223,000 and we collected \$361,200 for a total difference of \$133,200.00.

*Seems like a lot of money in one year, isn't it?*

Yes and no. In dollar amounts it seems significant, but let's remember that of the total Village levy of \$.8135 only \$.325 (.3995%) is useful for General Corporate expenditures. The remaining 60% is for Library and State of Illinois mandated or controlled purposes. Additionally, we have to provide services for 1500 more people than we did a year ago.

*How do you mean, Bob?*

For example, we are required by law to fund the Illinois Municipal Retirement Fund and the Police Pension Fund at a rate set by the State of Illinois. We must also furnish Crossing Guards, when School Districts request them. The Civil Defense levy is 25 cents per capita. These 4 accounts amount to over \$100,000.00 in taxes and 20% of the Village rate. Every time Social Security taxes are raised, we must also pay the higher rates. We cannot control these costs locally.

*Bob, what other key expenses do we have?*

Insurance is a good case in point. Liability costs have skyrocketed in the past two years as a result of new laws adopted by the State. To meet the higher risk premiums we had to increase our Liability rate by over 300% to an estimated \$.12, from \$.0322.

*The law firm of*

## Knechtel, Valentino, Demeur & Dallas

*announce the opening of their*

BLOOMINGDALE OFFICE at

Suite 104  
130 N. Bloomingdale Road  
893-9132

*They also maintain offices at*

20 N. Wacker Drive, Suite 4020, Chicago, Illinois 60606

726-5342

726-1068

# S H I G H E R ? ? ? ?

by

Paul Greening

We should keep in mind that of the total levy, only \$.325 is directly controllable solely through local Village action. This is for Police Protection and Corporate Funds and amounts to \$196,000.00.

*Hold it, Bob. How can we possibly support the Village activities on \$196,000.00?*

Actually our current total budget is approximately \$1.4 million, excluding the Library. Property taxes account for \$394,000. The rest is financed through other sources of revenue such as sales tax rebates, refunding of some of the state income tax and so forth.

*Without getting too technical, what are the basic causes for such a jolt to our pocketbooks?*

It is not easy to give a simple answer, but let's try. First, there is inflation. Look how much costs for everything have gone up over the past five years. And that trend has been steady, not just something that happened last year. Take a look at how the value of homes has soared during that time. It's a "paper gain", obviously, until you sell your home; but the value has certainly grown. Yet taxes have not risen correspondingly.

A specific case is a Westlake single family home. In 1972 the house had an assessed valuation of \$21,500 and paid \$1485.22 in 1973. In 1977 the same house had an assessed valuation of \$20,055 and will pay \$1528.27 or \$43.55 more than 5 years ago. The per cent increase from 1973 to 1978 was 2.9%. I just wish the inflation rate alone had been that low.

*Bob, how could this happen?*

We saw it coming, but were powerless to do anything about it. We have written several letters to the Township, the County and the State Legislators pointing this out. But in 1975 and 1976 we actually had lower taxes paid than in the previous years mentioned. The State equalized valuation was required to be 33% of fair market value rather than the 50% previously required per a change in the law in 1975. And that had to be adjusted by 1979.

*How do they arrive at that 33%?*

Very simply stated, home sales are monitored in a given area and the average market value for the three previous years is used. 33% of that amount is the assessed valuation. But, going back to our example of the Westlake single family home for a minute. Do you really think that house would sell for \$60,000 right now? It would certainly go for a lot more than that! (The chart shown on this page gives a complete analysis of this example. Ed.)

*Bob, we have covered a lot of ground. Any closing comments you would like to make?*

First, the amount of taxes that the Village levies is only about 10.6% of the total; which includes the Library levy. Another 9.6% goes to DuPage County, 4.6% to the Township, 3.85% for Park District, 4.47% for Fire Protection, and 66.8% for Schools. Second, the Village officials and employees are very concerned about taxes. We are taxpayers, too.



The table to the right is the actual history of property taxes paid by a Westlake Single Family homeowner. Although selected for its typical tax variations, no two homes are going to be identical in amounts paid.

<b>Westlake Single Family</b>				
Tax Year	Tax Rate	Assessed Value	Taxes Paid	Year Paid
1972	\$6.908	\$21,500	\$1485.22	1973
1973	7.097	21,500	1525.86	1974
1974	7.1272	21,500	1532.36	1975
*1975	7.3295	15,421	1130.30	1976
**1976	7.5237	16,664	1253.76	1977
†1977	7.6204	20,055	1528.27	1978

\* = .7593 Negative Multiplier - Township  
 \*\* = 1.0806 Multiplier - State  
 † = 1.10 Township; 1.1823 State Multiplier

# Community Hospital Benefits Village

by Pat Sodomka

Residents of Bloomingdale will be assured of close medical facilities as the new Glendale Heights Community Hospital, located on a 15-acre site at 1505 Jill Court, just off Glen Ellyn Road, opens its doors in 1979.

At the groundbreaking ceremonies held last December, Glendale Heights Mayor Robert Lippert, invited all the citizens of the rapidly-expanding suburban Glendale Heights to bring their own shovels and participate in the community celebration, which the Mayor said, "culminated a five-year battle by the Village of Glendale Heights to overcome bureaucratic regulations and bring a much-needed hospital into the area."

The hospital received approval from the State of Illinois Hospital Licensing Board of the Department of Health in 1973, but construction was held up when the Suburban Cook and DuPage Health System Agency later opposed the project. Although the state-approved facility was exempt from HSA review, Blue Cross of Chicago refused to contract with the project without HSA approval and private financing was stalled.

Last December, Patrick S. DeMoon, administrator of Central Community Hospital and project coordinator, announced that private financing for the Glendale Heights Community Hospital had been secured. Despite HSA opposition, DeMoon said hospital proponents stayed with the project because of the rapid expansion and population growth of the area and "tremendous" community support.

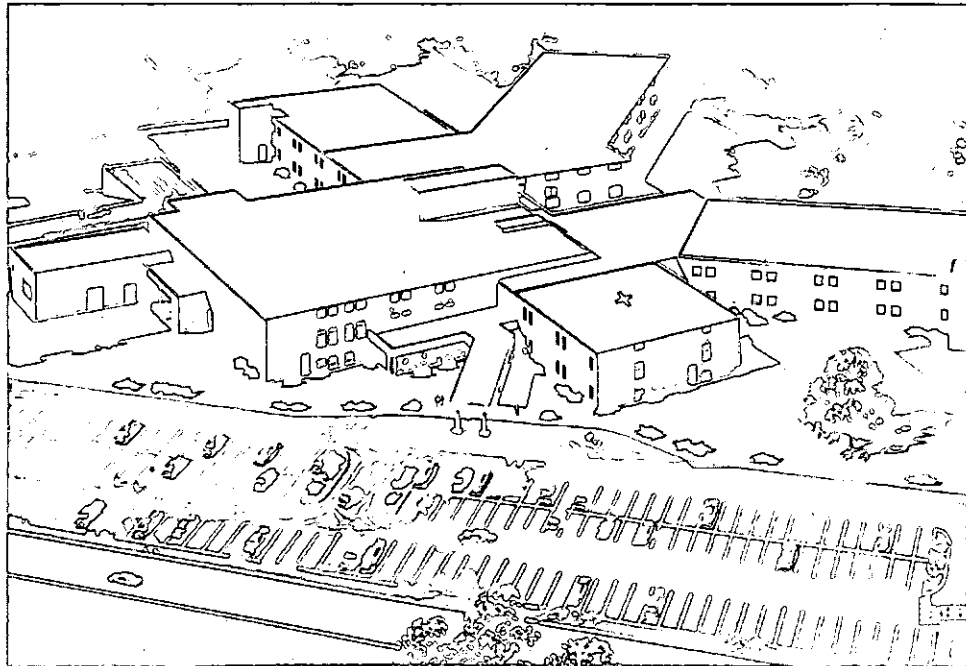
The Village Boards of Glendale Heights, Wheaton, and Bloomingdale all passed resolutions in favor of the new hospital last year.

The structure will be shaped rather like a five-pointed star. The hub, an area measuring some 140 x 110 feet, will house such essential hospital services as five operating rooms in the surgical department, the radiology laboratories, administration, dietary offices, the emergency room, pharmacy, the lobby and employee facilities.

Branching off from this hub will be four wings for patient rooms, housing the hospital's 186 beds.

At present, DeMoon said, "the foundations have been laid, the footings are in, and the exterior walls are up. The plan is to get the exterior walls up first, then build from the outside in.

The new hospital will provide an emergency room staffed by licensed physicians to provide round-the-clock emergency care. It will initiate special community service programs, including Papanicolaou tests for cancer for all adult women, tests for diabetes, blood pressure and glaucoma. All programs, according to DeMoon, will be available at no cost to the community.



*Bloomingdale residents can look forward to close medical facilities as the new Glendale Heights Community Hospital will open its doors in 1979.*

## "Par" Excellence

Indian Lakes Country Club introduces an expanded new dinner menu. Select from choice entrees such as New York Strip Steak, Chicken Kiev or Rainbow Trout Almondine. Popular daily specials also available.

Join us Wednesday through Saturday evening from 5 pm.

**529-0200**

**INDIAN LAKES**

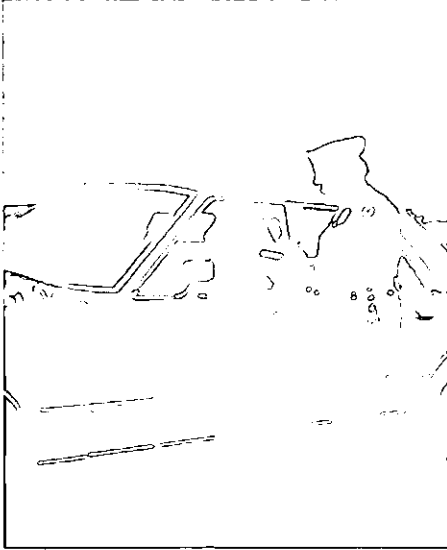
232 WEST SCHICK ROAD  
BLOOMINGDALE, ILLINOIS

An Enterprise of Carson Pirie Scott & Co.

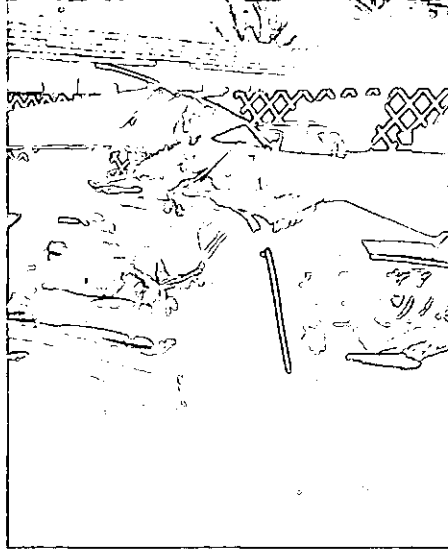


# CHIEF'S CORNER

by Police Chief Patrick J. McMahon



"THIS"



"OR THIS?"

Many times we hear statements such as "Bloomingdale is a speed trap," or "Those officers have a 'ticket quota' to meet." Let's set the record straight.

Each of us is a lot more concerned about what is called the "Traffic Quota." What is it? The quota is that yearly almost 50,000 people will be killed in traffic accidents throughout the United States.

Every day over 70,000 vehicles pass through the streets of Bloomingdale. Each of these vehicles has the capability of adding another number to that "quota."

A surprising fact about traffic accidents in the United States is not so much that they are our major cause of violent death, but that they are far and away the *easiest to anticipate and prevent*. Of approximately 150,000 violent deaths that occur in the country, the majority cannot be anticipated or prevented by any kind of direct, official action.

But not so with automobile accidents. They occur in such monstrous numbers (49,200 deaths in 1977) and in such well-defined areas (our public streets and highways) that by studying past accident records it is possible to predict accurately where and when a large percentage of these accidents will occur. We can also predict how a large number of them will happen. And even how most of them will be caused.

With this knowledge, the only remaining necessity is to put the police officers at the proper locations to enforce the law. And prevent accidents. This is precisely what has been done through the Illinois Department of Transportation funded Traffic Unit of the Bloomingdale Police Department.

The stationing of law enforcement vehicles at critical points is called "selective enforcement." Safety experts agree that it is probably the most powerful weapon the police have in their battle against traffic fatalities.

Through selective enforcement the Bloomingdale Police Department intends to prevent any Bloomingdale resident or visitor from being added to most critical quota, traffic fatalities.

Traffic speeds are posted for your safety. Obey them. Don't become another statistic.

**"THANK YOU BLOOMINGDALE AND SURROUNDING AREAS"**

Kilshot Racquetball Club is happy to Announce its expansion to a 15 court facility, with completion by September 1st.

*On our addition will also include:*

1. Satisfying exercise courts
2. Private lockers with laundry service
3. Pique Barbeque Area
4. Fully equipped Pro Shop
5. Complete auto glass work
- ↳ Spare tire seating
6. Year-round restrooms

**CALL TO AND SEE US!**

☎ All time to introduce you to us  
or show you how easy it is to visit!

## KILSHOT LTD.

A PERFECT FAMILY Recreation Center

**If you haven't had the opportunity to view our facility, please stop by ... we'll be happy to show you around.**

**KILSHOT LTD., 320 Edgewater Dr., Bloomingdale, Ill. 60108 Phone: 693-9575**

# JAYCEES...

## BUILDING TOMORROW TODAY

**For Further Information Contact:**

Jerry Hussey	894-5778
Rod Pedersen	529-1404

# Village News

## Bloomington Centrum Office Plaza

Bloomington welcomes the addition of the second tower of the Bloomington Centrum Office Plaza, a complex designed, to make the businessman, his associates and clients feel good about going to his office.

Located on the corner of Fairfield Way and Lake Street, the three-story building boasts 25,000 square feet of space. Unobstructed views from the smoked-glass windows in each exterior office, an entrance for loading and deliveries, a beautifully designed board room, (which can be reserved by any of the tenants) and a combination beauty and hairstyling shop will enable the businessman to spend the hours away from home in a comfortable and relaxed setting.

The West Central Development Corporation, management and developers of this property, look forward to the grand opening of the plaza on June 1. For any further information, call 894-8666.



*The new Centrum Office Plaza, one more addition to meet the growing needs of a growing community.*

## THANKS TO THE POLICE AND FIRE DEPARTMENTS

*(The following letter addressed to Mayor Morrisroe was received too late for publication in the March issue. A portion is reprinted below. ED)*

I would like to take this opportunity to compliment Bloomington on their outstanding police and fire department paramedics. Last Wednesday, February 22, at approximately 2:30 P.M., my cleaning lady suffered an eye injury that could have been a tragedy. I called the fire department for assistance and my impression is that both the ambulance and police were there in less than three minutes.

The men were not only professional and helpful but also extremely reassuring and courteous, in spite of a further complication that she speaks no English. Fortunately, Anna's eye was not injured although the injury to the lower lid was extreme. I just wish everyone in Bloomington could be made aware of the outstanding professionalism of these men.

Cordially,

Dale D. Armon

DDA:rar

## WE'RE HELPING BLOOMINGDALE'S GROWTH

*"We have a daily interest in you"*

## A FULL SERVICE BANK

Do your banking with "GEORGE" - 24 hours every day

2 LOCATIONS



BLOOMINGDALE STATE BANK  
First and Lake, Bloomington, Ill. 60108

or

310 Army Trail Road, Glendale Heights, Ill. 60137

Member FDIC



# SOMETHING FOR EVERYONE

# BWC NEWS

by Barbara Seiverth

Registration for Summer Recreation Programs begins June 3 from 8 A.M. to 10 A.M. All programs are 8 weeks in duration and will begin the week of June 19 UNLESS otherwise stated. Office hours are Monday thru Friday 9 A.M. - 5 P.M. Phone number 529-3650.

**Judo** — Youth and adult, Monday and Friday 6:30-8 p.m. \$12. Min. 5. Westfield Jr. High.

**Baton** — Age 5 & up. Tues. and Thurs. Beginning, 11 a.m.-noon. Continuing, noon-1 p.m. 5 week session at Westfield Jr. High. \$11. Min. 6.

**Ballet** — Thursday: age 5-7, 6:30-7:15 p.m.; age 8 & up, 7:15-8:15 p.m. Saturday: age 3-4, 10-10:45 a.m. or 11-11:45 a.m. Min. 6. Max. 10. \$9. Rec. Bldg.

**Soccer** — Age 7-12 (Must be 7 by Dec. 1) Boys & Girls instructional league. Monday, Wednesday, Friday 9-11 a.m. Circle Park. \$6. (Some Saturday's for games.)

**Gymnastics** — Age 6-8, Monday 11-12:30 p.m.; age 9-14, Thursday 11-12:30 p.m.; intermediate, Friday 11-12:30 p.m. Min. 5. Max. 20. Westfield Jr. High. \$8.

**Tumbling** — Mat work only, age 6-12. Tuesday 3-4 p.m. Westfield Jr. High. Max 12. Min. 4. \$8.

**Tot Tumbling** — Age 4-5, Tuesday or Wednesday 11-noon. Westfield Jr. High. Min. 5. Max. 20. \$4.

**Drawing** — Age 8-16, Wednesday 2:30-4:15 p.m. Min. 5. Max. 15. \$12. (Materials needed: 18" x 24" newsprint pad, 4-5 med. sticks of vine charcoal, art gum eraser.) Rec. Bldg.

**Slimnastics** — Monday & Wednesday 9:30-10:30 a.m. or Tuesday 7-8 p.m. Rec. Bldg. \$17 or \$9.

**Disco Dance** — Wednesday 7-8 p.m. or 8-9 p.m. Rec. Bldg. Max. 15. Min. 5. \$14.

**Youth Softball** — Age 7-14, boys and girls, Tues. & Thurs. 9-12 noon. Free. Bring own glove.

**Dog Obedience** — All breeds 6 mo. or older. Owner must be 12 yrs. of age. Tuesday 6:30-8 p.m. Circle Park. Min. 10. Max. 20. \$13.

**Tennis** — Adults: Beginner - Tuesday 9-10:30 a.m. or 10:30-noon or Monday 6-7 p.m. Adv. Beg - Thursday 9-10:30 a.m. or Tuesday 6-7 p.m. Intermediate - Thursday 10:30-noon. \$11. Max. 10 (Int. 8) Min. 5. Youth: Age 8-10, Wednesday 9-10:30 a.m.; age 11-12, Monday 9-10:30 a.m., age 13 & up, Friday 9-10:30 a.m. \$9. Min. 5. Max. 12.

**Tiny Tot Pre-School** — Age 3-5, Mon./Wed./Fri. 9-10:30 a.m. Min. 12 Max. 20. \$12.50.

**Summer Day Camp** — Four 2 week sessions: 6/12-6/23, 6/26-7/7, 7/10,7/21, 7/24-8/4. 9 a.m. - 3 p.m. Monday thru Friday. Age 6-11. You may not register for 2 consecutive sessions. \$30.

**Crafts** — Age 5-6, Tuesday 1:30-2:30 p.m. \$4. Age 7-8, Friday 1:30-2:30 p.m. \$5. Age 9-11, Thursday 1:30-2:30 p.m. \$6. Rec. Bldg. Min. 4. Max. 16.

**Open Gym** — Westfield Jr. High. Recreational games daily; volleyball, scatterball, and basketball.

**Teen Flag Football** — Circle Park. Age 13-16. Thursday 1:30-3 p.m. Free.

**Horseback Ridign** — Dunham Woods Farm, age 9 & up. Tuesday 1-2 p.m. Min. 5. \$36.

**Golf** — Adult: Ladies Beg., Tues. 9-9:45 a.m., Mixed Beg., Tues. 6:30-7:15 p.m., Adv. Mixed Beg., Thurs. 6:30-7:15 p.m. Min. 6. Max. 10. \$17. Youth: age 8-12, Tues. 10-10:45 a.m. Age 13-16, Thursday 10-10:45 a.m. Min. 6. Max. 10. \$14. Indian Lakes Country Club.

**Teen Trips** — Call Park office for more info. Great America Fri. June 23; Blackwell Forest Swimming Wed. July 12; White Sox Baseball Tues. July 25; Rafting down Wild Wolf River Aug. 11-13; Museum of Sc. & Ind. Thurs. Aug. 17.

**Special Events** — *Youth Art Contest* — Sunday, May 21.

*Big Wheel Racer* — Saturday, May 27 10 a.m.

*Bike Derby* — Saturday, June 10.

*Tennis Tournament* — Youth, 14-18, begins July 1 — Adult begins July 17.

*Kids Dog Show* — Sunday, July 9, 1 p.m.

*Junior Olympics* — July 28 and 29.

**Swim Lessons** — Five 2 week sessions, 6/12-6/23, 6/26-7/7, 7/10-7/21, 7/24-8/4, 8/7-8/18. Tiny tot, beginning, adv. beginning, intermediate and advanced lessons taught. \$6. Registration is held the Monday before each session begins at 10 a.m.

**Pool Passes on sale beginning May 1.** Saturday hours 9 a.m. - 12 noon (except May 27).

**Swim Team** — Competitive program with daily practices for boys and girls age 6-17. Park District has meets at least once a week with home and away meets.

The Bloomingdale Women's Club would like to thank everyone who helped make its Fourth Annual Charity Luncheon Fashion Show such a tremendous success. Over \$4,300 in proceeds will be given to the Lamb's Farm, a national center dedicated to the well-being of the mentally handicapped. Special thanks go to the local businesses who donated so many generous raffle prizes, to the 600 ladies who attended the show, Indian Lakes Country Club, Clark Weber of WIND AM radio, and the Pacesetter and Annabel, Inc., of Glen Ellyn.

The new slate of officers for 1978-79 was elected at the April meeting of the BWC. Ann Yonan was elected President for the second consecutive year. Shirley Repschlaeger was elected 1st Vice-President, Mickey Butlitta, 2nd Vice-President, Cindy Friscia, Secretary, Barbara Seiverth, Treasurer, and Anne Henzler, Historian. The new officers were sworn in at an installation dinner on May 9th at the Cloverleaf Restaurant in Bloomingdale.

---

## Bloomingdale's Newest Subdivision: Old Town Estate

by Steve Novy

New home buyers who wish to live in our village and local residents who need a housing change, but wouldn't consider moving to any other town, now have numerous options to consider in Old Town Estate, Bloomingdale's newest residential community.

West Central Development Company of Bloomingdale will begin construction this month on the first of 72 single family luxury homes just ¼ mile west of Bloomingdale Road on Shick Road.

Several exterior elevations designed by renowned Oak Brook architect Salvatore Balsamo will provide custom variety to the five model homes to be available. Model interiors will be lavishly appointed by the internationally famous interior design firm Childs and Dreyfus of Chicago.

According to Dominic Casalina, President of West Central Development Company, the average lot size in Old Town Estate will be 11,000 square feet (approximately 80 ft. by 140 ft.). Homes will vary in square footage from 2100 to 2950 square feet and will be offered for sale in the \$110,000 to \$135,000 price range.

## POLICE TEAMWORK GETS RESULTS

by Paul Greening

The Bloomingdale Police Department recently effected the largest marijuana seizure by other than a Federal agency in the last five years within DuPage County. The 489 pounds of drugs seized at a Bloomingdale residence has an estimated street value in excess of \$250,000.

The success of the arrest is attributed to the teamwork, not only among other governmental agencies, but within the department itself.

Acting on information they received, the Police set up surveillance and determined from the airlines that the offenders were making frequent trips to Florida. Cooperating with the local police, the Drug Enforcement Agency advised that the couple had been in West Palm Beach and left there at 7 A.M. on May 6.

After obtaining a search warrant for both the vehicle and the residence, the officers began their stakeout at the residence at 2 A.M. on Sunday, May 7. Another officer was assigned to the airport, should the couple change their itinerary.

When the vehicle reached their Bloomingdale residence at 5:13 A.M. on Sunday, Detective Charles Mader and Sgts. Gary Schira and Mike Joseph served the warrants and made the subsequent arrest.

Other officers involved included Gary Sterzel, Tom Knowles, Frank Cudio, Shilora Larson, Jeff Fritz, Frank Yuro and Dan Maloney.

Assisting the Bloomingdale Police throughout the case was Ken North, Chief of the Strike Force for DuPage County of the State Attorney's office.

## Come and Join the Reading Roundup

Children from 1st through 8th grade, you are invited to join the 'Summer Reading Roundup' at the Bloomingdale Public Library.

Sign up anytime after June 1st and get your Reading Record Booklet and name tag. As you report on the books you have read throughout the summer your marker will move across the prairie into the corral. After reading 25 books you will receive an award certificate at the end of the summer.

See you at the library.



*Police Chief McMahon and Detective Mader examine part of the 489 pounds of marijuana seized recently by Bloomingdale Police.*

## New Sprinkling Ordinance

The Bloomingdale Public Works Dept. is at work digging the Village's 7th well, as an additional safeguard against drought. However, during the months of peak usage, it is sometimes necessary for the Board of Trustees and the Mayor to take action to limit the use of public water supplies. On April 24, 1978, a new water ordinance was passed, and is printed below in its entirety.

### ORDINANCE NO. 78-14

#### **AN ORDINANCE GRANTING CERTAIN EMERGENCY AUTHORITY TO THE VILLAGE PRESIDENT TO RESTRICT USE OF PUBLIC WATER SUPPLIES IN PEAK MONTHS**

WHEREAS, the Board of Trustees of the Village of Bloomingdale being mindful of the serious problems arising each year during summer months of providing an adequate supply of water to residents of the Village for both human consumption and for fire protection; and,

WHEREAS, from time to time during months of peak water demand, it may become necessary and expedient to restrict use of public water supplies and prohibit certain non-essential uses of the public water supply on an emergency basis;

NOW, THEREFORE, BE IT ORDAINED BY  
cont'd on page 12

## Learning Disabilities and the Family

The relationship between learning disabilities, or hyperkinetic behavior, and the family will be discussed in a program being offered to parents by Dr. Richard Harris, Psychologist. In his presentation, Dr. Harris will discuss the importance of the family in properly diagnosing and treating the child with learning disabilities or hyperactive behavior.

According to Dr. Harris, family dynamics play an important role in determining the origins of a child's learning and behavioral problems, as well as in helping him adjust more satisfactorily. Parental expectations, anger, guilt, and frustrations may hinder progress and render medical, academic, and other helping efforts useless.

For further information . . . the program is being offered at no cost to parents. Registration is required and may be done by calling 893-2170.

## Runners Race with Lions

by Steve Novy

Amateur runners from all over the Chicago area will kick up a storm in the streets of Bloomingdale on Saturday, June 3rd. The Lions Club will sponsor a marathon race on a meandering 13.1 mile route through our Village to promote publicity for both Bloomingdale and the Lions' charities.

According to Bob Babyar, Lions Club marathon race coordinator, contestants may enter the competition prior to the race for a \$3 entry fee. Late entry fees will be \$5 at the "starting gate" in Circle Park on Fairfield Drive. Proceeds from Lions Club events are used to benefit local children.

Lions Club members Jim Sargis and Carl Stapleton have labored long and hard in an effort to publicize the event with television, radio, Chicago Tribune and Chicago Sun-Times coverage. Bloomingdale State Bank, American Heritage Savings, Camelot Real Estate Corporation, and Killshot Racquetball Club are a few of the many local businesses that are sponsoring the run.

### ECON-O-MART 110 S. Ridge Road

Look for:

Purina Chows • Morton Salt • Moore Paints • Pioneer • Riviera • Pepsi • Colgate • Planters • Durkee • Motor Craft • Heinz • P&G • Kendall • Smuckers • HTH • Vigoro • Bolens • M&M Mars • Hunt-Wesson • STP • Holsum • 7-Up • Coca-Cola • La Rossa • Spinney Run • and crowded with 12,000 other items!

# GROWING IN MATH

by Renee Spencer

Many parents can remember not being particularly "good" in math and as a result they were usually proclaimed by educators to be slow learners or simply not able to grasp math concepts. Because of this stigma, many were generally told to take the least amount of math needed to graduate and then to never pursue a career or skill which would rely heavily on math concepts.

At Westfield Middle School, today's sixth, seventh and eighth grade students who are either slow learners, unmotivated or have missed a great deal of time out of school are not pushed aside or told to just "do enough to get by." These students, under the direction of Gail Yokubinas and the Title I program, are offered remedial math courses.

According to Yokubinas, the purpose of the remedial math program is to bring students up to grade level while helping their attitude about math and their motivation. "I try to make them enjoy math as well as help them learn the skills," Yokubinas said.

She explained that this remedial program, funded by the federal government, has been in operation for two years and "generally takes students who are two years below grade level in math."

These students, who number between 40 and 50 per year, are selected by S.R.A.

math computational scores or can be put into the program by teacher recommendation.

One of the hardest problems Yokubinas has encountered is letting the students in this program know immediately that they are not "dummies". "These students come from all ranges of unmotivated students, students who were never taught math correctly or students who would have been sick for long periods of time. They are certainly not all slow and they range in intellect and ability," she explained.

Teaching methods are also different in the remedial course and offer a more individualistic approach to teaching. And while Yokubinas says that there is a strong "back to the basics" trend in schools, she said that she not only uses this technique but a whole series of math-oriented filmstrips, tapes and other materials put out by Educational Development Laboratories.

According to Yokubinas, the scheduling of the remedial math program is rather complicated because students take her guidance, as the only remedial teacher, along with regular math classes. She estimated that she spends at least one hour per week with each student, but can spend more time with them if they need extra help or fall behind in their course work.

Students can move out of the program at any time of the year if they progress quickly. They are tested after the program is over and told if they should spend more time in it or not.

In speaking of math programs throughout the country, Yokubinas said that she feels problems with children not grasping math concepts are found all over, "Right now there are so many different philosophies about how to teach math and the programs are not all completely coordinated. This lack of coordination doesn't help the students."

Yokubinas also reiterated that the old stigma that women are not good in math in general is not true anymore and that in her own classes she has more males than females.

What has parent reaction been to these classes? As Yokubinas proudly said, "Most parents feel pleased with the program and there is no lack of support."

The math instructor said that last year's scores showed a marked improvement in the math students performance and she is anxiously waiting to see the results at the end of this school year.

If parents are interested in the program and wish to find out more about it, they may contact Westfield Middle School.

**The Almanac staff is reprinting the opinion feature because we can't believe no one replied in the last issue! Could it be that everyone is pleased with everything in the community?**

## OPINION FEATURE

### WHAT DO YOU THINK?

Please tell us if you have any suggestions or questions for your Village. What you think is important to us. Write your thoughts below, then detach and mail to "What Do You Think," Village of Bloomingdale, 201 S. Bloomingdale Rd., Bloomingdale, IL 60108.

My thoughts are as follows: \_\_\_\_\_

\_\_\_\_\_

\_\_\_\_\_

\_\_\_\_\_

\_\_\_\_\_

\_\_\_\_\_

Name \_\_\_\_\_ Address \_\_\_\_\_

Print my name: Yes \_\_\_\_\_ No \_\_\_\_\_



**Village Of  
Bloomingdale**

**201 S. BLOOMINGDALE ROAD  
BLOOMINGDALE, ILLINOIS 60108**

**BULK RATE  
US POSTAGE  
PAID  
Bloomingdale, Ill.  
60108  
Permit No. 16**

**VILLAGE  
NEWSLETTER**

**POSTAL PATRON, LOCAL  
BLOOMINGDALE, ILLINOIS 60108**

## **New Sprinkling Ordinance**

**continued**

THE PRESIDENT AND BOARD OF TRUSTEES OF THE VILLAGE OF BLOOMINGDALE, DU PAGE COUNTY, ILLINOIS, as follows:

Section 1: Whenever, during the months of May, June, July, August, and September of each year, the Village President shall determine that a state of water emergency exists, which, in the judgment of the Village President, threatens the health and safety of residents of the Village, the Village President is hereby authorized to declare a state of emergency and to invoke the following restrictions on usage of public water supplies:

(a). The use of public water for the purposes of sprinkling lawns and other vegetation, and for filling or replenishing water in private swimming pools may be prohibited between the hours of 3:00 p.m. and 9:00 p.m. and between the hours of 1:00 a.m. and 11:00 a.m. each day.

(b). The use of public water for the purposes of sprinkling lawns and other vegetation, and for the filling or replenishing water in private swimming pools may be prohibited except on alternate days of the week, excluding Sunday, with residents occupying properties with even numbered addresses being permitted to use public water for such purposes only on Mondays, Wednesdays and Fridays, and residents occupying properties with odd numbered addresses being permitted to use public

water for such purposes only on Tuesdays, Thursdays and Saturdays.

Section 2: The authority herein granted the Village President may be exercised only after the Village President has caused an investigation and report of the public water supplies to be made by the Director of Public Works and it has been determined that a state of water emergency exists. Upon receipt of such investigation and report, the Village President shall declare a state of emergency, which declaration shall be in writing and signed by the Village President on oath before a notary public.

Section 3: Any person, firm or corporation who violates, disobeys, neglects or refuses to comply with an executive order issued by the Village President pursuant to this ordinance and the authority herein granted, shall, upon conviction, be fined not less than \$25.00 nor more than \$50.00 for each such offense. Each day that a violation of such executive order continues constitutes a separate violation thereof for which a separate fine shall be assessed by the Court.

Section 4: All ordinances or parts of ordinances that are in conflict herewith are hereby repealed.

Section 5: This ordinance shall be in full force and legal effect from and after its passage, approval and publication as provided by law.

**PASSED this 24th day of April, 1978.**

## **BLOOMINGDALE BUSINESS DIRECTORY**

*The Village of Bloomingdale encourages citizens to patronize local businesses whenever possible.*

### **ATTORNEYS AT LAW**

Knechtel, Valentino, Demeur & Dallas  
130 N. Bloomingdale Rd., Suite 104  
893-9132  
Chgo. Off: 20 N. Wacker Dr., 726-5342

### **AUTOMOTIVE SERVICES**

Bloomingdale Carriage Shop  
153 W. Lake Street  
529-6115  
Complete Auto Body & Mech. Repair

### **GENERAL MERCHANDISE**

Econ-O-Mart  
110 Ridge Road  
529-5490  
You're invited to browse and save

### **INSURANCE**

Farmers' Insurance Group  
Larry Zidek Agency  
130 N. Bloomingdale Road  
893-1900

### **VETERINARIANS**

Bloomingdale Animal Hospital  
Joel Borman DVM; Keith Olson DVM  
290 Glen Ellyn Road  
893-4330

Bloomingdale Businesses who wish to sponsor the Village Almanac should contact Steve Novy at the Village Hall. Phone 893-7000.