

Jaycee Search — Page 3

Thanks to You — Page 5




The Village

Almanac

OFFICIAL PUBLICATION OF THE  
VILLAGE OF BLOOMINGDALE

Volume 4, Number 6

Dec., 1979



Seasons Greetings  
from the  
President, Clerk,  
Trustees and Employees  
of  
The Village  
of  
Bloomingtondale

# VILLAGE HALL HAPPENINGS

by Paul Greening

## FROM THE EDITOR

The ALMANAC staff wishes to thank all of the organizations, schools, businesses and churches which have contributed to the ALMANAC during the past year. We appreciate the time you have taken to make us aware of stories, to provide us with information and pictures which we have tried to use whenever possible. We look forward to working with you in the coming year and welcome any suggestions you may have.

The staff also wishes to thank our readers who have shown a continuing interest in the ALMANAC and the Village by using the "What Do You Think?" column. In this issue we have reprinted seven different comments. We welcome these responses and hope they provide a meaningful source of communication within the Village.

Once again, as Editor I would ask any of you with any experience in journalism to contact me about helping out on the ALMANAC. We are critically short of staff. With the continued growth in the Village we may find ourselves going to 16 pages to accommodate the increasing amount of news and greater advertising. But we cannot do it without more help. In this issue we have listed the phone numbers of the editor, advertising manager, and assistant editor. Call any of us if you would like to help.

## COMMISSION CHANGES

Mr. John DeLaHunt resigned from the Citizens' Advisory Committee as he and his wife are moving from the Village. Mr. Tim Wickstrom of 25 Thrasher was appointed to the Economic Development Commission for a term to expire May 1, 1981. Dr. Brandt Crocker, Superintendent of School District 13, was appointed to the Capital Improvements Commission for a term to expire on May 1, 1982. John Laudont of 147 Raven Lane was appointed to the Commercial Redevelopment Committee for an indefinite term. Marie Tayfel of 202 Edgebrook was appointed to the Old Town Commission. Her term will expire on February 27, 1980.

## LEFT TURN SURVEY — NORTH CIRCLE

On October 8, 1979, letters were sent to approximately 120 residences in the North Suncrest area asking them whether they favored or opposed restricting left turns from Lake Street to North Circle at certain times of the day. Of the 64 responses, 41 were opposed to the prohibition of left turns; 23 favored some prohibition, but not necessarily that which was proposed.

At the November 6 Committee of the Whole Meeting the Board agreed to wait until two months after the traffic signals were installed at Fairfield and Lake Street to determine what effect the new signals would have on traffic flow. The subject of left turn prohibitions will be considered again at that time.

## COMMISSION SECRETARIES NEEDED!!!

Bertie Sargis, Secretary to the Mayor and Village Administrator, advises that there is a critical need for people with secretarial skills to act as recording secretaries to several of the commissions and committees presently serving the Village.

**THE VILLAGE ALMANAC**  
is published bi-monthly by the  
Public Relations Committee of the  
Village of Bloomingdale.

Editor  
Paul Greening 894-7308

Assistant Editor  
Pat Sodomka 529-8816

Advertising Manager  
Steve Novy 529-7515

Staff  
Renee Spencer  
Karen Umlauf  
Dawn Namec

Advisor  
Robert Iden

Address all correspondence to:  
Village of Bloomingdale  
Public Relations Committee  
201 S. Bloomingdale Rd.  
Bloomingdale, IL 60108.

These minutes are the official record of committee proceedings and are critical to committee operations. So, if you have secretarial skills and wish to spend a few hours a month recording minutes and transcribing them, contact Bertie at the Village Hall (893-7000) during normal office hours. Compensation is paid per meeting.



## VILLAGE BOARD & COMMISSION MEETINGS

*The public is encouraged to attend all Board & Commission meetings.*

### REGULAR MEETINGS OF THE VILLAGE BOARD

2nd and 4th Tuesday of every Month  
8:00 P.M. — Village Hall

### COMMITTEE OF THE WHOLE

1st and 3rd Tuesday of every Month  
8:00 P.M. — Village Hall

### PLAN COMMISSION

1st and 3rd Monday of every Month  
8:00 P.M. — Village Hall

### BOARD OF FIRE AND POLICE COMMISSIONERS

3rd Tuesday of every Month  
8:00 P.M. — Village Hall

### POLICE PENSION BOARD

Bi-monthly beginning in January  
3rd Monday, 8:00 P.M.—Village Hall

### ECONOMIC DEVELOPMENT COMMISSION

2nd Friday of every Month, 8:00 A.M.  
Office of the Chairman of the Comm.

### YOUTH COMMISSION

2nd & 4th Thursday of every Month  
7:30 P.M. — Village Hall

### CAPITAL IMPROVEMENT COMMISSION

2nd & 4th Thursday of every Month  
8:00 P.M. — Village Hall

### OLD TOWN COMMISSION

2nd Thursday of every Month  
8:00 P.M. — Village Hall

## Jaycees Search for "Outstanding" Citizens

The Bloomingdale Jaycees are conducting a Village-wide search for Bloomingdale's Outstanding Citizen of the Year Award.

The Jaycees are asking all community groups to select nominees for outstanding citizen and submit them for judging. Noel Kohl, chairman of this year's awards committee, said that "this fifth annual award is an excellent opportunity for not-for-profit groups and service organizations to have the entire community recognize the dedication and concern of one or more of its members by nominating them for this prestigious award."

The award will be presented on Tuesday, Jan. 22, at a gala banquet at Indian Lakes Country Club to the Bloomingdale resident who has contributed his or her time and efforts to benefit the Village and its residents.

The Jaycees are also accepting nominations for the Robert J. Homola Memorial Award. This award is presented annually, in the memory of the late Village President, to any public employee within the Village who has contributed beyond the scope of his or her regular duties.

Last year's recipient of the Bloomingdale Outstanding Citizen of the Year Award was Sandra "Sundee" Luedecke. Sundee was co-founder and chairperson of the Board of Bloomingdale Township Child Care Services, Inc., Area Co-chairperson for the Channel 11 Gogetters, advisor to the Bloomingdale Festival Queen Contest, telephone volunteer chairperson for the library bond issue, area coordinator for the School District 13 bond issue and Fashion Show Chairperson for the Bloomingdale Womens' Club.

The Robert J. Homola Memorial Award was presented posthumously to the former District 13 School Superintendent Harold Tompkins. Harold was district superintendent for six years, a member of St. Paul's United Church of Christ, and a charter member of the Capital Improvements Commission. He also worked to improve the Village library and was active in the Village blood drive.

Nominations for either award should be sent to the Bloomingdale Jaycees, Outstanding Citizen Award, or Robert J. Homola Award, P.O. Box 75, Bloomingdale, IL 60108. Nominations must be received by Jan. 7, 1980 to be eligible for selection. For further information, call Noel Kohl at 894-1153.

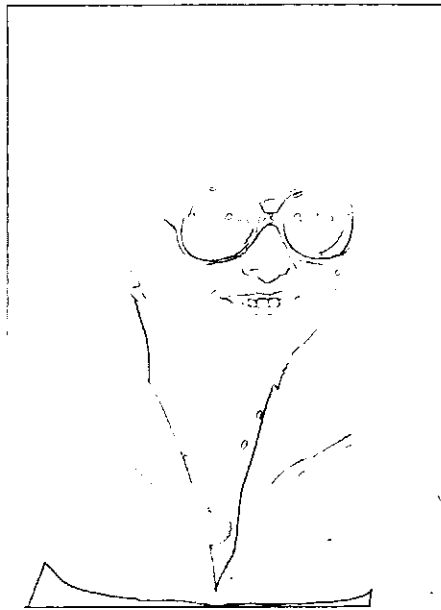
## BOARD AGAIN AT FULL STRENGTH

With the resignation of Trustee Friscia and the election of Trustee Tenuto to Village President, the Board for a period of time was lacking two members.

Action taken by the Board since that time has once again brought the Board back to full strength. First, at the October 23rd Meeting, the Board by a majority vote appointed Carol M. Koehler and Robert Iden as Trustees to serve until the next regular election in 1981. Both were sworn into office on October 30.

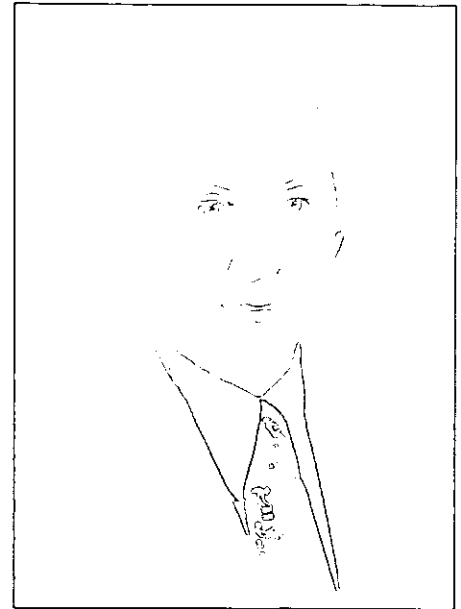
At the October 30 meeting Mrs. Barbara Arrivi was appointed as Village Clerk for a term of office to expire in April of 1981.

Carol Koehler of 190 Euclid Avenue began her Village activities by joining the Bloomingdale Womens' Club in 1973. In 1974 she joined the Bloomingdale Blood Association as a charter member, utilizing her educational background as a Registered Nurse.



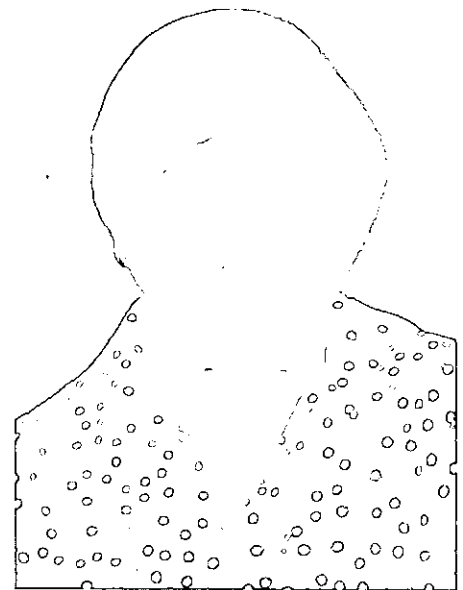
In 1977 she ran for Village Clerk and was elected to that position, which she held until the time of her appointment to Trustee.

Mr. Robert G. "Bob" Iden of 114 N. Maple has been a resident of Bloomingdale since 1969. When not involved in business activities as president of Iden Company, Bob has found time to serve on the following organizations: Bloomingdale Historical Society, Bloomingdale Old Town Commission, Bloomingdale Commercial Redevelopment Commission, District 13 Central School Referendum and the Central School PT.



Born and raised in Hammond, Indiana, the newly appointed Village Clerk Barbara Arrivi moved to Bloomingdale in 1971 with her husband Dominic and now resides at 196 Kingston Lane.

"Barb" has been active with the Friends of the Bloomingdale Library, Vice Chairperson of the Bloomingdale Township Commission on Youth, Chairperson of the Art Auction for the Bloomingdale Library, a Board member of the St. Matthew's Women's Club, and a religious education teacher at St. Matthew's.



Her husband, Dominic, has served on the Village Plan Commission for the last five years and was appointed a year ago to the Village Zoning Board.

# SIDEWALK SUPERINTENDENT

Note: With the widespread construction going on throughout the Village, the ALMANAC has initiated a regular feature entitled "Sidewalk Superintendent" to keep residents abreast of current and proposed building within the Village. We are indebted to Director of Building and Zoning Joseph M. Stella for providing us with this information.)

## STRATFORD SQUARE REGIONAL SHOPPING CENTER (Gary Avenue and Schick Road)

1. Stratford Square Mall area is well under way with all caissons completed and most footings and foundation wall in.

2. Wieboldt's and Marshall Field's are well under way with all caissons completed and most part of footings and foundation walls completed. Carson's has just completed all the caisson work and will soon start with the footings and foundation walls.

3. Montgomery Ward's has not started at this date. However, we have preliminary plans with final plans about January 2, 1980. Their starting date for construction will be March 1, 1980.

All in all, the Stratford Square Center is pretty close to schedule.

## SPRINGBROOK CENTER (Lake Street at Fairfield)

Springbrook Center will be open on or about March 15, 1980. Some of the stores at this Center will be as follows: Hallmark Cards; Reichardt Cleaners; Photomat (Camera Store); Rag Bag (Women's Fashions); Petty Cash (Women's Fashions); Fayva Shoes; Baskin-Robbins Ice Cream; Command Performance Hair Stylists; Dino's Fast Foods.

Bloomington Drive-In Bank will also be open on or about March 15, 1980.

Jo Jo's Restaurant to start in March of 1980.

## DUNKIN' DONUTS (Lake Street near Circle)

Almost complete and will be open on or about the second week of December.

## CIRCLE SHOPPING CENTER (Lake Street)

Sal's Finer Foods and seven additional stores are under construction with completion slated for the Spring of 1980.

## WAG'S RESTAURANT (Lake Street near Circle)

They have just picked up their permits and construction will be under way about December 1, 1979.

## GLEN TRAILS SHOPPING CENTER (Army Trail Road and Glen Ellyn Road)

Their permits have been issued, and construction should start some time in December, 1979.

## RENDEZVOUS RESTAURANT (Lake Street)

A new 13,000 sq. ft. restaurant with banquet facilities has started under construction with completion some time in the Spring of 1980. The original restaurant is still in operation during construction.

## GLEN ELLYN CLINIC (Schick Road)

This resort is scheduled for completion about May 1, 1980.

- A. Carson's Hotel; 305 rooms.
- B. Carson's new restaurant.
- C. Carson's new building with an indoor swimming pool.
- D. Remodeling of thunderbird Room to a Health Club.

# BWC Brightens Holidays for Senior Citizens

The Bloomingdale Women's Club hopes to make Christmas a little brighter for residents of the Bloomingdale Pavilion by filling Christmas stockings for them. The stockings, donated by the Red Cross, are being filled by donations from club members, some businesses, and The Friendly Corner Learning Center children.

The Club members' annual Children's Christmas party will feature a balloon man, a magician, and Santa himself.

Looking forward to 1980, the BWC Fashion Show Committee announced "Fashion Focus '80" will be held Saturday, April 19, 1980, at The Carlisle in Lombard. All proceeds from the show will help to furnish a pediatric playroom unit at the new Glendale Heights Community Hospital.

## Library Events

According to Village Librarian Gay Nass, several activities of interest to library patrons of all ages will be available in the coming months. Highlights are listed below. For further information, call the Library at 529-3120.

January 4	10:30	<i>Children's Story Hour</i> will resume. Diane Fisher, local guitarist will be a guest. Story hours will continue to be held every Friday until February 29.
January 8	7:00	Film: <i>The Bermuda Secret</i>
January 15	7:00	<i>Amsterdam</i>
January 22	7:00	<i>Hong Kong</i>
January 29	7:00	<i>Madrid</i>
February 5	7:00	<i>Vienna</i>
March 3	7:00	<i>Needlepoint Class.</i> This begins an 8 week free course in needlepoint. Cost of materials will be about \$20.00. Classes will be held every Monday night until April 21st. Call the Library to register.

# HOLIDAY SAFETY FROM THE BLOOMINGDALE FIREFIGHTERS PEOPLE WHO CARE

- DO** be careful when purchasing a fresh Christmas tree. Buy a firm tree with no evidence of dryness or dropping needles. Store it in a cool place with the base of the tree in water until ready to be decorated. If you prefer to have an artificial tree, purchase one with the UL (Underwriter's Laboratory approved) label.
- DO** inspect the decorations you use on the tree. Check the lighting strings for frayed wires, broken cords, and loose sockets. These conditions pose potential electrical hazards. Again, look for the UL label.
- DON'T** overdo it. Be sure not to overload the electrical circuits in your home. Wires that carry more current than they can handle may overheat and cause a fire. Read the manufacturer's instructions on lighting strings carefully. Never use more than the recommended number of lights in one circuit.
- DON'T** leave tree lights, colored spotlights or other decorations on when you leave home or retire for the night.
- DON'T** settle for the unknown. When purchasing gifts for the people you care about take time to check for the UL label. Gifts of electrical appliances and toys are tested for safety; the UL label is your assurance that used properly they are hazard-free.
- DON'T** leave gift wrappings lying around and **DON'T** burn them in the fireplace. Place them in containers and remove those containers from your home.
- DON'T** hang flammable materials — evergreen boughs, stockings, etc., from the fireplace mantel.
- P.S. Now that snow has fallen, remember to dig out fire hydrants located on or near your property. Also, marking their location with plastic flags or yardsticks sprayed with luminous paint could save precious minutes in the event of an emergency.

## WE'RE HELPING BLOOMINGDALE'S GROWTH

"We have a daily interest in you"

### A FULL SERVICE BANK

Do your banking with "GEORGE" — 24 hours every day

2 LOCATIONS



**BLOOMINGDALE STATE BANK**  
First and Lake, Bloomington, Ill. 60108  
or  
310 Army Trail Road, Glendale Heights, Ill. 60137

Member FDIC

## THANKS TO YOU...

*The following letter from Mr. & Mrs. Jonathan Howell of 266 Durham, Bloomington, eloquently expresses the benefit from our Village Blood Drive. Ed.)*

Dear Boomingdale Neighbors:

Jonathan and I want to thank you for your support of the Bloomington Blood Drives on behalf of our son, Christopher. Chris is eleven years of age, and is classified as a classic severe hemophiliac. He requires the blood product "factor 8". This factor 8 is the clotting factor which most individuals have in their blood, but Christopher does not.

Chris needs an average of two treatments every week for this condition, and he will never outgrow this deficiency. Because of the constant danger of spontaneous internal bleeding between his joints and the like, there is a constant concern over his care.

Because you have given so generously through the Bloomington Blood Drive, you have taken a real load off of our minds. We are able to cover all of his blood needs now, and we don't have to carry on our own blood drives in Chris' behalf.

We feel indebted to everyone who has given their blood and/or their time to this program, and encourage everyone to understand the importance of the program to their families and friends of Bloomington. A sincere thank you to all of you.

Sincerely,

Mr. & Mrs. Jonathon Howell

### GIVE A DAMN! GIVE A PINT!

Make sure you give of your time and blood at the next drive to be held on Thursday evening, January 10, 1980, at the Village Hall. The last blood drive produced 193 units of the 452 quota needed for the program.

To volunteer as a donor or helper call either Diane Scesniak (894-4653) or Natalie Merkel (893-3139). Your neighbors need you.

# ★ ★ ★ BUILDING ANEW — BLOOM

by Kare

## HERE WE GROW AGAIN

If all goes as planned, Bloomingdale is going to lose its reputation as the crossroads with the taverns on the corners. Late in November the Board of Trustees approved the Bloomingdale Commercial Redevelopment Plan submitted to them by the Old Town Commission. The plan is the first step in meeting the state requirements for designating the Lake Street area a "commercially blighted area" and proposing a plan for future redevelopment.

According to Allen L. Kracower and Associates, village planning consultants, the area qualifies for the state plan on the basis of dilapidated or deteriorated buildings, poor land use and layout, residential buildings located on land with commercial potential, lack of access roads off Lake Street, lack of sidewalks and parking lots, and lack of a master plan for the area.

Under the Illinois Municipal Code the Village can issue commercial revenue bonds to rectify these problems and thus finance the restoration of the historical downtown area. A business applying for such financing would have to first be approved by the Village, its Plan Commission, and the Old Town Commission (if located in that area). If approved, the Village would then issue revenue bonds to fund the venture, offering lower interest rates to the business, a tax-free yield to the bond purchasers, and an increased tax base to the Village. No costs and little risk are incurred by the Village.

Kracower and Associates worked closely with the Old Town Commission in developing the plan. Members of the board-appointed Commission include President James Galligan, Dominic Casalina, Ann Hatt, John Laudont, Sundee Luedeke, John Mahoney, Marvin Roehlke, Sharon Spane, and Frank Szatkowski.

### INDIVIDUAL PRIVATE OFFICES

*Fully furnished, equipped  
and staffed offices for less  
than the cost of a  
secretary.*

We offer tastefully decorated, modern offices complete with reception, conference room, telephone answering, professional secretarial support and all business services.

### ADMINISTRATIVE ASSISTANCE CORP.

*The Office Services Company*  
113 Fairfield Way, Suite 205  
Bloomingdale, Illinois 60108  
(312) 980-5600

## A WARM BUSINESS

Our motto is, "Fireplaces: Anywhere, Anytime, Anyplace!" says Dave Heil, co-owner of Old Town Fireplace and Gift Shop at the corner of Third Street and Lake Street. Heil, a Bloomingdale resident, and his partner, Robert Molenaar of St. Charles, moved their 11 year-old business from Wooddale to the Old Town area in September.

They spent 120 days and twice their budget of \$20,000 rehabbing the house originally built in May of 1851. The hodgepodge of room additions, the two-foot thick cobblestone basement walls, and a core structure held together with wooden pegs and square nails presented some real challenges during remodeling. Nonetheless, with the renovation efforts and addition of porches, new windows and "gingerbread" they have created a house with character while maintaining its historical significance.

Inside, visitors will find a unique variety of goods and services. Heil and Molenaar do all the work, building custom fireplaces, installing screens, glass doors, and energy-efficient stoves, blowers, and heat exchangers. A large part of their business is the do-it-yourself package for the man handy enough to install his own fireplace.

The Fireplace Shop also carries two little-known items that are good buys for the energy-conscious consumer. One is a conversion kit for outdoor gaslights which are expected to become illegal within the next year. The other is a ventless gas fireplace that does not require a chimney. Including the attractive cast stone, the unit can be purchased for under \$500. and is ideal for bedrooms, basement rec rooms, living rooms or dining rooms.

## A "LEGAL" FAN

Bloomingdale has a great fan in Attorney Wayne L. Mular. "DuPage County, Bloomingdale in particular, is so dynamic; it has the potential that Cook County has already enjoyed, yet the friendliness of rural counties like Kane. The best of Cook and Kane come together in DuPage County."

Mular, a former resident of Westlake and former assistant state's attorney for DuPage County, had practiced with a firm in Wheaton prior to establishing his private practice at Lake and Third Streets in Old Town. A graduate of John Marshall Law School and Illinois Institute of Technology with a degree in engineering, Mular worked his way through school designing trucks for International Harvester. The switch in careers came because, "I like working with people, not things," he stated.

Today, he handles mostly real estate transactions, domestic relations, criminal misdemeanor defenses, and small defense cases from his new offices in the second story of the Fireplace Shop. He also represents the Village of Bloomingdale as a prosecutor, the Library Board, and Bloomingdale Fire Protection District No. 1.

Mular is married and the father of three daughters. A skiing and jogging fan, he hopes to move his family back to Bloomingdale in the near future.



## GRANDMA'S ATTIC

When Debbie Sabino had to pay \$14.00 for a pair of overalls for her infant son, the brainchild which developed into "Grandma's Attic" was born. Located in a charmingly renovated turn-of-the-century house at 105 South Third Street, "Grandma's Attic" specializes in excellent quality children's outgrown clothing, furniture and toys.

The store features a large selection of boys' and girls' clothing in sizes newborn to 6X and a smaller selection in larger sizes. Prices seem to be about 75 percent less than retail for new items and brand names include Health-Tex, Carters, Little World, Billy-the-Kid, Nanette, Cinderella and others. There's a good selection of buggies, umbrella strollers, car seats, infant carriers, and toys as well. It might be a good place for grandmas and grandpas to stock up on "spares" for visiting grandchildren, too.



# INGDALE'S OLD TOWN '79 ★ ★ ★

nlauf



"Grandma's Attic" happily accepts merchandise on consignment. Their standard 40 percent-90 day policy assures fresh merchandise, continuous and attractive displays, and accommodating turnover. The "partners" — Mrs. Douglas Stevenson of Medinah, her daughter, Debbie Sabino of Bartlett, Mrs. Stevenson's daughter-in-law, Mary Crider of Roselle, and Mrs. Stevenson's neighbor, Alice Lemmon of Medinah — also go to the North Shore garage sales for quality items and bargains. Mr. & Mrs. Stevenson purchased the abandoned home in May and spent nearly five months restoring and decorating it.

Children are welcome to play with toys on Grandma's front porch or browse with Mom inside. Hours are 9 to 5 Tuesday through Saturday and 9 to 9 on Thursday and Friday.

## IT'S MAGIQUE

John Bialek and Dee Obrochta, co-owners of the newly opened *Magique* at 159 W. Lake Street, have several unique claims. First, theirs is the only magic shop in the area. Second, they are the last business in Bloomington on the north side of Lake Street west of Bloomington Road.

For the last 11 years John has been performing feats of magic — sleight of hand to those who are cynics — in the metropolitan Chicago area as a magic bartender, working in such places as the Ivanhoe on Clark Street, the New York Lounge on North Lincoln and Nordic Hills in Itasca.

Additionally he assisted manufacturers at trade shows incorporating magic in the sales pitch to draw crowds to the sponsor's exhibit.

As another new business in the Old Town area, John states: "*Magique* offers gifts which are different, unique, humorous. During our grand opening we have been amazed at the number of people who have come to our new store. Even if they don't buy anything, people laugh and smile at some of the items we offer. How can you put a price on a smile in these troubled times?"

John Bialek and Dee Obrochta encourage bartenders, salesmen and any others with an interest in magic tricks to stop by their store for supplies, information or instruction.



## "LET IT SNOW???????"

The winters in the Midwest have been very severe during the last three years with a record snowfall for metropolitan Chicago last year. The ALMANAC asked Bob Mundo, Director of Public Works, how we looked for this year.

First off, he advised that the Village now has six trucks, three of which are 1979 models. Of the six, five are equipped for salt-spreading. The Village now also has two front-loader tractors for cleaning up intersections and cul-de-sacs.

Should the Public Works Department be unable to handle the load of a severe snow, they are now authorized to obtain additional help from Stellman Trucking, DiVito Construction, Rosati's Construction and Lemons Trucking.

According to Bob, the plan this year for snow removal will be to have each of the six trucks cover a specific area to start with. All main streets will be opened first. School areas, hills and main intersections will be salted. Then will come the feeder streets. 550 tons of salt have been allocated for this season.

Said Mundo, "We are stressing the point of not falling behind and letting the snow get ahead of us. The Mayor, Board and Village Administrator have given us 100% cooperation in planning this program."

"So as they say, 'let it snow!'"

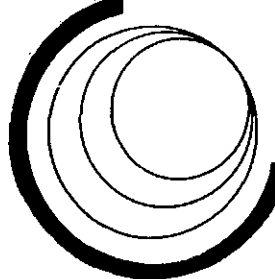
## Bloomington Photography Experts

Try us and see  
Just how inexpensive  
Quality can be.

Bring in this ad and receive \$1.00 off  
the finishing of any fresh roll of film.

## Classic Photo Inc.

Old Town Square, Bloomington • 47 E. Fullerton, Addison  
Phone: 980-1510 • Hours: T-TH 9-6: M-F 9-9: SAT. 9-6



## CABLE TV UPDATE

by Paul Greening

In the last issue of the ALMANAC we ran an extensive story on the concept of different types of pay TV, both cable and non-cable. Since we began writing about this topic we have received requests from citizens to investigate the negative aspects of the program.

Some of the people opposing Cable TV have said that such an installation would diminish TV reception for non-subscribers. According to Village Administrator Bob Reeves, this is not true.

Bob then explained why. In the use of Cable TV, a signal is sent from a satellite to a ground receiving station located in the proximity of the receiving area. From there the signal is carried via underground coaxial cable to each resident.

Scientifically speaking, said Reeves, there is no more possibility of the signal for Cable TV interfering with non-cable TV than there is of one telephone conversation interfering with another telephone conversation.

Some people have raised the point that if Ham Radio transmission interferes with

TV reception, why won't Cable TV have the same effect? Ham radio transmits into the atmosphere. The TV antenna mounted on top of the roof of the home may or may not pick up part of that signal and input that signal into the TV set. On the other hand, Cable TV is coaxial cable into the home. It does not depend on the TV antenna mounted on the roof.

Residents have cited past experiences in other locales which are contrary to the facts stated above. For this reason as well as many others, the Village is carefully investigating all of the alternative systems. On the one hand, people who want Cable TV in the Village should not be denied that right; on the other hand, those who do not want to subscribe to Cable TV should not be deprived of their access to normal TV transmission.

The ALMANAC promises to keep you advised of the progress in this project. Any Village resident is welcome to call the Village Administrator at 893-7000 to obtain the names of companies who can provide a more detailed explanation.

## Added Space for Firemen

Bloomington's fire prevention district not only has a new addition to its building, at 108 W. Washington St., but according to District Fire Chief Lawrence Koehn the station's enlargement will offer better and faster protection for Bloomington residents.

Already partially in use, the two-story augmentation will not be fully completed until the first of the year. The project started in early July.

Chief Koehn noted that before the 2-story, 30-ft. by 60-ft. area was added to the south side of the existing site, the staff of five worked in cramped 8 ft. by 10 ft. quarters.

"We needed the extra office space and needed to expand our fire prevention bureau and training rooms. The prevention bureau will have an additional three men working in it next year. With that supplementary manpower and possibly more to come in the near future, we wouldn't have had adequate space for all involved without the addition."

Koehn explained that the lower level of the extension is designed to hold the training area and a two-stall garage. The upper level will hold offices, a meeting room and the actual fire prevention bureau.

"By this addition we will expand the administrative facility to better enable us to operate more efficiently," Koehn remarked.

## STICKER DEADLINE FEBRUARY 15

by Renee Spencer

Village stickers for vehicles registered in Bloomington are now on sale at the Village Hall. The 1980 stickers are required to be affixed to your auto, truck, or recreational vehicle not later than midnight February 15.

The automobile fee is \$7.50 per unit. The fee for other units varies according to weight. The late charge is \$1.00 per month for each month past the deadline unless you are a new resident. Village Treasurer Pat Tompkins cautions RV owners who only use their units during the summer that they must still have current stickers and must pay the late fee if they register after the deadline.

Senior citizens may receive their stickers free of charge by bringing proof of age to the Village Hall. Also exempt from the fee are antique vehicles displaying current state registration as such.

To facilitate registration, the Village has mailed a three part application together with a postage paid return envelope to all residents who currently have stickers. Before returning the application please take the following steps:

1. Check the form to see if it accurately describes your present vehicle. If not, indicate changes.
2. Verify the fee according to the enclosed schedule.
3. Make check or money order payable to the VILLAGE OF BLOOMINGDALE.
4. Enclose check or money order and **all three copies** of the application.

Within ten days after mailing your form and check, you should receive your 1980 sticker plus the receipt. Keep the receipt. If you change vehicles during the year, you can use the receipt to obtain another sticker or transfer the same sticker to your new vehicle for a \$1.00 fee.



**YOUR FULL SERVICE REAL ESTATE**

*Residential, Commercial, Industrial*

*Owner operated • Involved in our Community*

*Blue Ribbon Realty*

111 East Irving Park Road  
Roselle, Illinois 60172

Telephone: 529-2235

181 South Bloomington Road  
Bloomington, Illinois 60108

Telephone: 894-1900



# THANK YOU, SPONSORS

by Steve Novy

Three years ago the Village ALMANAC was a four-page publication that was short on copy space to report an ever-increasing number of events to a rapidly growing community. At that time we were publishing only four times a year.

Supported primarily through Village funds, the editor and Village officials recognized that more funding from outside sources was needed to provide the kind of service that residents deserved.

So we asked more of our local business people to help fund this publication through a sponsorship program. We restricted participation to Bloomingdale businesses only for two reasons: first, to encourage citizens to shop and keep sales tax dollars in the Village; and second, to help local businesses compete aggressively with businesses in neighboring villages.

The support we asked for was not meager. We sought long-term commitments that extended for as long as two years and ranged from \$24 to \$435 per issue. Initially we had few businesses in town, and many had growing pains. But many did help.

Now new businesses open their doors every month and every month another business helps to provide you with current news of our growing Village. In fact, local businesses now pay for more than 75% of the total publication expense through their sponsorship.

As we approach the end of another year the ALMANAC would like to thank our sponsors who have helped us during 1979. We encourage all residents to support the local businesses listed below who continue to assist in making this publication possible.

Administrative Assistance Corporation  
Donald Altier S.R.A., R.M.  
American Heritage Savings  
Austin Federal Savings  
Bloomingdale Animal Hospital  
Bloomingdale Pharmacy  
Bloomingdale State Bank  
Blue Ribbon Realty, Inc.  
Carl A. Champagne, Attorney  
Classic Photo  
Classic Travel  
The Dogfather  
Econ-O-Mart  
Farmers Insurance, Larry Zidek Agency  
Golden Bear Restaurant  
Jakala, Knechtel, Valentino,  
DeMour & Dallas, Attorneys

Donald McClean & Co., CPA  
Mangiamele & Reed, attorneys  
Robert Meyers, D.D.S.  
Otto Electric  
D.J. Heating and Air Conditioning  
James Paradowski, D.D.S.  
Pat's New Image  
State Farm Insurance,  
Larry Beeman Agency  
Warnimont's True Value Hardware  
Edward Weiland, D.D.S.

## HOLIDAYS WEGHING YOU DOWN??

Has your present weight been on your mind lately? Could you use some help getting those extra pounds off? Now there is an opportunity for all of us who are fighting the "battle of the bulge"

A new group is meeting every Thursday evening, 7:00 PM, at Christ the Redeemer Lutheran Church, Army Trail and Glen Ellyn Rd., here in Bloomingdale. The weekly class is an educational program on nutrition for weight reduction and is for all age groups, whether you have 10, 50 or 100 pounds to lose. The class is taught by a village resident who recently has lost 60 pounds on this program.

If you have been wanting to reduce for medical reasons or because your health, well-being and appearance are important to you, now is your chance to finally do something about it.

For more information, phone Lynn Ellinghausen in the evening at 665-1675.

# CHIEF'S CORNER

by Patrick J. McMahon, Chief of Police

Approximately one year ago we announced the formation of the Police Social Service Unit. At this time I would like to give you an update on that unit's progress, particularly as it has affected the Village of Bloomingdale.

The unit, initially established as a joint effort of the communities of Bloomingdale, Glendale Heights and Roselle, was implemented on July 3, 1978, and is currently one of 40 such units operating in the Chicagoland area.

The purpose of these units is to reduce the amount of police officer time spent responding to calls which are more social service in nature than law enforcement concerns.

The following free and confidential services are offered to residents:

1. Short-term counseling to individuals or families who are experiencing difficulties which have or may result in police contact. Examples would include parent/adolescent conflicts, wife and child abuse, neighborhood disputes, marital problems, problems pertaining to crime victims, the elderly, etc.

2. Police/social worker teams on a twenty-four hour, seven-day-a-week basis in emergency situations.

3. The training of police officers in social service areas, e.g., intervening with emotionally distressed people.

4. Resource information and referral for individuals whose needs are beyond the scope of the Unit's services

Since its inception the unit has performed in a very fine manner. In the period between July 3, 1978 and June 30, 1979 they served 142 adults and 46 juveniles who were residents of Bloomingdale. In the tri-Village area they served a total of 351 adults and 144 juveniles.

The three police departments estimated that the Unit's intervention with people who had social service needs resulted in a reduction of 1200 manhours of police officer personnel time during the program's first year.

The Unit, under the direction of Ms. Gay Stephens, is supplemented by three Master of Social Work student interns from George Williams College. Additionally effective with the beginning of the unit's second fiscal year monies provided by the Illinois Law Enforcement Commission and the villages involved were granted to hire a second full-time social worker, Ms. Cynthia Krivanec.

## ECON-O-MART 110 S. Ridge Road

— Look for:

Purina Chows • Morton Salt • Moore  
Paints • Pioneer • Riviera • Pepsi •  
Colgate • Planters • Durkee Spices •  
Motor Craft • Heinz • P&G • Kendall  
• Smuckers • HTH • Vigoro • Bolens •  
M&M Mars • Hunt-Wesson • STP •  
Holsum • 7-Up • Coca-Cola • La Rossa  
• Spinney Run Milk • Ray-O-Vac •  
Hitachi • Hoover • Toshiba  
• Dee-Cee Jeans • Pampers •  
Venice-Maid • and crowded with

2,000 other items!

# HELP THE MAIL, AND THE MAILPERSON!

by Renee Spencer

'Tis the season to be jolly. But also, 'tis the season to be helpful . . . especially to the person who delivers your mail.

More than 14,000 of the nation's letter carriers were injured in falls last year according to Bloomingdale Postmaster James Sutter because ice and snow were not properly cleared from sidewalks and steps.

Bloomingdale postal workers promise they'll make every effort to work with customers to accommodate them. "But we want to remind them that snow and ice on steps and sidewalks to homes or businesses must be removed where carriers walk," Sutter noted.

With the winters we've been subjected to in Bloomingdale the past few years, postal workers realize that it's not always easy for individuals (especially the elderly) to remove ice and snow. And although carriers try to live up to their image gathered from the age-old pledge, "Neither rain, nor snow, nor sleet, nor hail, the mailman will prevail," carriers are not required to risk life and limb to deliver mail.

A notice recently sent out by the postal department to Bloomingdale residents states that "postal regulations regarding delivery of mail to rural or curbside boxes requires customers to keep the approach to their mailbox cleared of snow, vehicles, and other objects." It adds that the approach to and exit from the mailbox should be cleared sufficiently on both sides to allow the carrier to drive ahead and not be required to back up the vehicle after delivery.

Postmaster Sutter said he was very pleased at the number of homes which placed mail boxes on one pedestal to ease delivery, especially during the winter months.

During the period from December through February the total number of carriers injured in falls on slick sidewalks and steps more than doubles compared to warm weather months. And everyone knows a bad fall in any kind of weather can be injurious not only to health, but happiness.

Therefore, in this happiest and most giving of seasons let's all bundle-up and "dig-in".



# WHAT DO

## LATE ALMANAC DELIVERY

I received this book in the mail today, Nov. 1. I noticed some dates of things happening are already over with. . . This book is great but dated October. Why delivered in November? It is put together very well otherwise.

*Name withheld upon request.*

*We do our best to meet our deadlines. We are thankful for the cooperation we receive from both our printer and the Post Office; however, in spite of our best efforts, we still sometimes cannot make delivery on time. Mea Culpa. Editor*

## TRAFFIC SIGNAL LOCATIONS

A traffic signal at Lake & Fairfield?? You are better off with no light at all! The intersection at Circle will be blocked with traffic all the time and make it impossible to get across. . . The only main streets going north from Lake St. are Bloomingdale Road, Medinah Road and Circle. . . Circle needs the light and I'm sure it can be done easily. . . I pray the state will reconsider.

*Pat Romano  
138 South Prairie*

*Chief McMahon advises that Lake Street is a State route and as such, the Illinois Department of Transportation has control of the traffic flow and traffic devices thereon. IDOT is of the opinion that more traffic onto Lake Street is generated at Fairfield Way, which traffic will increase with the opening of the shopping center in the spring of 1980. When traffic lights are erected at Fairfield and Lake Street, signs prohibiting the blocking of the intersection will be erected at Circle Avenue and Lake Street. Officers will be enforcing these signs. Ed.*

Many people feel we need a stoplight at Schick Road & Bloomingdale Rd. I've seen many "almost accidents." That intersection is so dangerous and now with the shopping center going up and Indian Lakes Country Club expanding, it's ever so much in need. Also, there's more people living in the area now and that means more cars, more traffic and a more dangerous intersection.

*Name withheld upon request.*

*According to Bob Mundo, Director of Public Works, the Village recognizes that the completion of Schick Road to the east of Bloomingdale Road, along with the new developments to the west, will be generating increased traffic at that in-*

*tersection. The Village is presently investigating methods by which funding for such an installation could be obtained. In addition, traffic studies will be initiated in the near future.*

What is the ordinance regarding garage sale signs on public property, such as Edgewater? Apparently, they are not allowed since I have seen the police destroying signs (and leaving a mess on the ground). The rule does not appear to be well known. Why are real estate "open house" signs allowed, or are they?

*Name withheld upon request.*

*Ordinance #69-11 entitled Unlawful Posting of Bills, Political Posters and Advertisements prohibits the posting of any such item on public property or on private property without the written consent of the owner. Violators can be fined from \$25.00 to \$200.00 per offense. As a policy, police officers remove the illegally erected signs and retain them at the police station.*

*Chief McMahon.*

As a resident of Bloomingdale for 8 years I am convinced that we have a very fine police department but I cannot understand why, when giving a ticket to a motorist, the police think they have to park beside the stopped automobile instead of pulling behind him?

*Name withheld by request.*

## BLOOMINGDALE RESIDENTS!

Present this ad to your Golden Bear waitress when being seated and receive \$1.00 off your next guest check. (One discount per person per visit. Not redeemable for cash).

Offer good at our Bloomingdale location only.



170 East Lake Street  
Bloomingdale, IL

# YOU THINK?"

## BLOOMINGDALE POLICE DEPARTMENT OPEN HOUSE

When a police officer stops a traffic violator, he is required to leave his squad car and approach the stopped motorist. This requires the officer to approach the motorist from the driver's side of the stopped vehicle. In order to protect the officer making the traffic stop, and also those motorists that step out of their vehicles, officers are instructed to park their vehicles in an offset manner to provide for the safety of both parties.

Village ordinance #72-39 prohibits the use of snowmobiles between the hours of 10 PM and 8 AM. The Illinois Vehicle Code, Chapter 95-1/2, Sections 604 and 605, prohibits excessive noise, riding over private property without permission, and operating on highways. Chief McMahon advises that the primary problem is enforcement, but encourages residents to report violators by obtaining the registration number which by law must be displayed on each side of the vehicle in 3-inch numbers. If such residents are willing to act as witnesses, it is possible to successfully prosecute such cases. *Editor*

When motorists approach a squad car that has stopped a violator, they should slow to a reasonable speed and proceed with caution. The officers activate the overhead lights, not only to attract the attention of the motorist but also for the purpose of allowing approaching traffic to be aware of the presence of vehicles in the roadway.

*Chief McMahon*

### SNOWMOBILE USE LEGAL?

Is there a Village ordinance against the use of snowmobiles, or is there one in the plans? They are on the increase, especially in the Indian Lakes area. They are being run on the streets and over private property, their own and others, with no concern for the safety and extreme noise factor caused to others.

*Name withheld upon request.*

### CABLE TV — Pro or Con?

I am responding to your reply to Sherry Chalmers. The attached leaflet was handed out this spring. The writer is convinced that the introduction of Cable TV into our area would cause a lot of problems for non-cable users. The allegations made were strong enough to warrant your concern. Please check the negative aspects of cable television; they are as important as the positive.

Beth H. Gemkow  
208 Applewood Lane

*(Please see story in this issue, "TV UPDATE")*

The members of the Bloomingtondale Police Department invite all Village residents to attend an open house at the police facility located in The Village Hall, 201 South Bloomingtondale Road. The open house will be held on Sunday, January 13, 1980 between the hours of 1:00 and 3:00 p.m.

At 1:00 p.m., an inspection of uniformed officers will be conducted by members of the Village Board and Chiefs of Police from adjacent communities. Immediately following, department members will demonstrate booking procedures (including fingerprinting), evidence processing, the techniques of dispatching calls for service and the computerized crime information system.

Citizens are encouraged to tour the entire facility and to inspect patrol and Emergency Services Disaster Agency vehicles, as well as other equipment.

★

**KEEP YOUR TAX DOLLARS  
WORKING FOR YOU!**

**BUY IN BLOOMINGDALE!**

★

## OPINION FEATURE

Please tell us if you have any suggestions or questions for your Village. What you think is important to us. Write your thoughts below, then detach and mail to "What Do You Think," Village of Bloomingtondale, 201 S. Bloomingtondale Rd., Bloomingtondale, IL 60108. No unsigned submissions will be considered. The ALMANAC reserves the right to reprint all or part of the submission depending upon length. We do, however, try to retain the gist of the query.

My thoughts are as follows: \_\_\_\_\_

\_\_\_\_\_

\_\_\_\_\_

\_\_\_\_\_

\_\_\_\_\_

\_\_\_\_\_

Name \_\_\_\_\_ Address \_\_\_\_\_

Print my name: Yes \_\_\_\_\_ No \_\_\_\_\_

# BLOOMINGDALE BUSINESS DIRECTORY



Village Of  
Bloomingdale  
201 S. BLOOMINGDALE ROAD  
BLOOMINGDALE, ILLINOIS 60108

BULK RATE  
US POSTAGE  
PAID  
Bloomingdale, Ill.  
60108  
Permit No. 16

POSTAL PATRON, LOCAL  
BLOOMINGDALE, ILLINOIS 60108

## ACCOUNTANTS — CERTIFIED PUBLIC

Donald McLean & Co., Chtd.  
181 S. Bloomingdale Road  
894-9470

## APPRAISER

Donald J. Altier, S.R.A.; R.M.  
267 Royce Ct.  
832-7666  
Real Estate Consultant

## ATTORNEY AT LAW

Carl A. Champagne  
109 Fairfield Way  
529-3900  
Chgo. Off: 100 W. Monroe, 726-3248

## ATTORNEYS AT LAW

Jakala, Knechtel, Valentino, Demeur  
& Dallas  
130 N. Bloomingdale Rd., Suite 104  
893-9132  
Chgo. Off: 20 N. Wacker Dr., 726-5342

## BEAUTY SALON

Pats New Image  
276 Glen Ellyn Rd.  
893-4080  
Beauty & Boutique Salon

## CAMERA SHOP

Classic Photo Inc.  
Old Town Square  
156 S. Bloomingdale Rd.  
980-1510

## DENTIST

Robert Meyers, D.D.S.  
201 E. Army Trail Rd.  
893-4650  
Office hours by appointment

## DENTIST

James Paradowski, D.D.S.  
255 E. Lake Street  
529-7130  
Office hours by appointment

## ELECTRICAL CONTRACTOR

Otto Electric  
132 W. Lake Street  
980-9085  
Residential • Commercial • Industrial

## GENERAL MERCHANDISE

Econ-O-Mart  
110 Ridge Road  
529-5490  
You're invited to browse and save.

## HARDWARE

Warnimont's True Value Hardware  
23 W. 745 Lake Street  
529-3030  
Comm. Edison Bulb Service

## HEATING & AIR CONDITIONING

PJ Heating & Air Conditioning  
226 Circle Ave.  
529-8500  
"We make you comfortable"

## INSURANCE

Farmer's Insurance Group  
Larry Zidek Agency  
130 N. Bloomingdale Road  
893-1900

## INSURANCE

State Farm Insurance  
Larry Beeman Agency  
107 S. Bloomingdale Road  
529-0114

## PHARMACY

Bloomingdale Pharmacy  
Bloomingdale & Schick Roads  
980-9198 or 980-9199  
"Your Family Drug Center"

## RESTAURANT

The Dogfather  
Old Town Shopping Center  
Bloomingdale & Schick Roads  
893-6522

## SECRETARIAL SERVICES

Administrative Assistance Corp.  
113 Fairfield Way, Suite 205  
980-5600  
"The Office Services Company"

## TRAVEL AGENCY

Classic Travel & Tours  
185 E. Lake Street  
980-7900  
"Airline Tickets at Airport Prices"

## VETERINARIANS

Bloomingdale Animal Hospital  
Drs. Borman, Olson & Page  
290 Glen Ellyn Road  
893-4330

KEEP YOUR TAX DOLLARS  
WORKING FOR YOU!

BUY IN BLOOMINGDALE!

## CHURCH DIRECTORY

Bloomingdale Alliance Church — 893-3066  
Pastor: David Riemenschneider  
260 Glen Ellyn  
Bloomingdale

Bloomingdale Baptist Church — 980-6161  
Pastor: Philip Yntema  
245 Bloomingdale Road  
Bloomingdale

Christ The Redeemer Lutheran — 529-8290  
241 Army Trail Road  
Bloomingdale

Indian Lakes Comm. Church — 893-2920  
Pastor: Ray E. Stauffer  
Black Hawk School  
Glendale Heights

St. Isidore Catholic Church — 529-3045  
Pastor: Arthur J. Maher  
227 W. Army Trail Road  
Bloomingdale

St. Matthew's Catholic Church — 469-6300  
Pastor: George J. Hurley  
1555 Glen Ellyn Road  
Glendale Heights

St. Paul United Church of Christ  
Pastor: James P. Beecken  
First and Washington Sts.  
Bloomingdale