

Volume 5, Number 3

June, 1980

PARK DISTRICT BOND ISSUE APPROVED

By a margin of 11 votes Bloomingdale Park District voters approved the \$400,000 General Obligation Bond issue on May 31st.

500 votes were cast in the close referendum; 253 affirmative votes were cast compared to 242 negative votes. Normal voter turnout for a Park Commissioner election averages 300.

Sale of the \$400,000 in bonds is scheduled for July 14th. Bids for the building which will provide for badly needed gymnasium space will be reviewed about August 1.

If everything goes according to schedule construction should begin about September 1 and the building should be ready for occupancy by the first of the year.

Architects for the building, Art Jakl & Associates, have recommended concrete slab construction of the 65-foot by 140-foot structure which will be located immediately south of the existing Park District offices at 172 South Circle.

At the time the issue was proposed, municipal finance consultants estimated the average cost to Bloomingdale Homeowners would be approximately \$10 per year for the 11-year life of the issue; however, since that time declining interest rates should reduce the estimated total cost, said Park District Tom Lovern.

Lovern stated that the summer and fall schedules would not be interrupted during construction. For further information on programs call 529-3650.

LEHR RESIGNS; SPENCER APPOINTED

On Monday, May 5 Harry Lehr resigned his position as Village Trustee effective immediately.



HARRY LEHR

Lehr accepted a position with Air California as Director of Planning effective June 2 and required the time during May to close out his affairs in Illinois. For the past 14 years Harry had been with United Airlines. His most recent position was Director of Strategic Planning.

Harry and his family moved to Bloomingdale in 1973. He was one of the original members of the Capital Improvements Commission. He was elected a trustee in the 1979 Village election.

In his resignation letter Lehr stated, "As so often happens with things we do reluctantly, serving as a trustee has proven to be far more enriching than I could have imagined. It had certainly been my intention to serve my full term and I apologize for not being able to do so", he said.

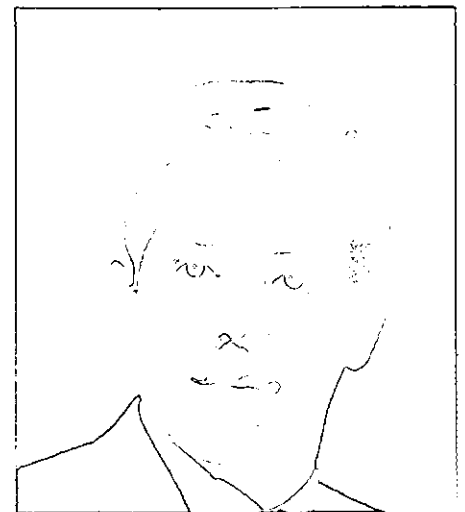
At the regular Board meeting on June 9 the Trustees voted to appoint David A. Spencer of 257 Langton Lane to fill the vacancy until the next regular election in April of 1981.

A native of Independence, Missouri, Spencer obtained a Bachelor of Science Degree in Engineering Management from the University of Missouri. He subsequently earned a Master of Business Administration from Northern Illinois University.

Currently Dave is a Senior Industrial Engineer for the Flying Tiger Line. In this position he supervises the planning and maintenance of region manpower, operating expenses and capital expenditures for Flying Tiger's nine stations in the Midwest.

Spencer moved to Bloomingdale in August of 1975. He and his wife Carol Ann have two boys, aged 10 and 7.

Prior to his appointment as a trustee, he had been a member of the Capital Improvements Commission.



DAVID A. SPENCER

VILLAGE HALL HAPPENINGS

E.S.D.A. Volunteers Wanted

The Bloomingdale Emergency Service Disaster Agency is seeking volunteers to join their organization. The E.S.D.A. assists fire and police departments in the event of a major disaster such as a tornado striking the Village. Male and Female applicants should be at least 21 years of age, in good physical condition and willing to spend at least two nights a month at required meetings. Medical / first-aid/ E.M.T. knowledge is helpful. Interested parties should contact either Len Notz, Coordinator or Sgt. M. Joseph, Police Advisor at 529-9868 for further information.

FROM THE EDITOR

Two years ago the ALMANAC took a big step forward when we expanded our publication from 8 pages to 12 pages. It was our feeling at the time that the growth in the Village justified such a move to provide better coverage of all the activities throughout the Village.

Additionally at that time Steve Novy of 236 Longridge accepted the responsibility of Advertising Manager. One of the first things he did was to institute the Bloomingdale Business Directory which encouraged businesses within the Village to take space in the ALMANAC under this category. In this way new people in the Village would have immediate knowledge of local services.

The growth of the Directory speaks for itself. In the May, 1978 issue we had five listings; in the April, 1980 issue we had 24 businesses listed in the Directory. Each issue we are adding businesses.

Unfortunately Steve has found that the requirements of his job prohibit him from continuing as Advertising Manager. All of us wish to thank him for the pioneering effort he made. Currently advertising in the ALMANAC is paying for 100% of the printing cost.

Speaking of printers, we recently went out for bids on the printing of the ALMANAC for the next six issues beginning with the June 1980 edition. Although no printer in the Village is of the size willing to accept responsibility for the publication at this time, we are pleased to announce that the John W. Luxon Co. of nearby Carol Stream was low bidder. We wish to thank the staff of the B.R. Charles Company for their assistance in printing past issues.

Mayor Available On Saturdays During Summer

Even though the Village offices are closed on Saturdays during the months of June, July and August, Mayor Tenuto will still maintain his usual business hours from 8:30 AM to 12 Noon. Anyone wishing to meet with the Mayor should call the Village Hall during the week at 893-7000. To contact the Mayor at his office on Saturday call 893-3972.

Schick Road Closed

On June 6 Schick Road was closed from west of Indian Lakes Country Club to Gary Avenue for widening to a 4-lane concrete road. Work is expected to be completed by Thanksgiving. At the same time widening and re-routing of Gary Avenue to a 4-lane road from north of Schick Road to the existing 4-lane road in Carol Stream (approximately 2 1/4 miles) has also been initiated. Both roads will have turn islands to permit access to Stratford Square.

Organizations Want Publicity???

Radio Station WPRZ (1330AM) is interested in any community information from the North Shore and Northwestern suburbs. Chairpersons should contact Mr. Walt Molony, News Director, at 869-8900. The mailing address is 2425 Main Street, Evanston, IL 60202.

THE VILLAGE ALMANAC

is published bi-monthly by the Public Relations Committee of the Village of Bloomingdale. Copy deadline is the first day of the month of publication, e.g., April 1 for April publication.

Editor

Paul Greening 894-7308

Assistant Editor

Pat Sodomka 529-8816

Advertising Manager

Karen Umlauf

Staff

Renee Spencer

Dawn Nemeč

Steve Novy

Advisor

Trustee Robert Iden

Address all correspondence to:

Village of Bloomingdale
Public Relations Committee
201 S. Bloomingdale Road
Bloomingdale, IL 60108

Handicapped Parking Cards

By the end of June the Village will have available a Handicapped Parking Card. This card may be used when person qualified as handicapped is using a vehicle other than the one which has an Illinois License Plate with handicapped markings. The cards are available free of charge.

KEEP YOUR TAX DOLLARS

WORKING FOR YOU!

BUY IN BLOOMINGDALE!

VILLAGE BOARD & COMMISSION MEETINGS

The public is encouraged to attend all Board & Commission meetings.

REGULAR MEETINGS OF THE VILLAGE BOARD

2nd and 4th Monday of every Month
7:30 P.M. — Village Hall

COMMITTEE OF THE WHOLE

1st and 3rd Monday of every Month
7:30 P.M. — Village Hall

PLAN COMMISSION

1st and 3rd Tuesday of every Month
8:00 P.M. — Village Hall

BOARD OF FIRE AND POLICE COMMISSIONERS

3rd Tuesday of every Month
8:00 P.M. — Village Hall

POLICE PENSION BOARD

Bi-monthly beginning in January
3rd Monday, 8:00 P.M. — Village Hall

ECONOMIC DEVELOPMENT COMMISSION

2nd Friday of every Month, 8:00 A.M.
Office of the Chairman of the Comm.

YOUTH COMMISSION

2nd & 4th Thursday of every Month
7:30 P.M. — Village Hall

CAPITAL IMPROVEMENT COMMISSION

2nd & 4th Thursday of every Month
8:00 P.M. — Village Hall

OLD TOWN COMMISSION

2nd Thursday of every Month
8:00 P.M. — Village Hall

HALF-A-THON HEROES

When the Greek writer wrote, "Not snow, no, nor rain, nor heat, nor night keeps them from accomplishing their appointed courses with all speed." he must have envisioned weather similar to that faced by the Lions Club Half-A-Thon entrants on June 8.

250 entrants were at the starting line at 9 AM under heavy overcast skies. By mid-morning many of the entrants were slogging through driving rains, hail, thunder and lightning to finish what they had started. That 227 runners finished was a testimony to the determination of the runners.

The winners and runners up as well as their times were:

6.0 Miles

Men:
Mike Pellikan (31.49 min)
Mark Witteveen (33.12)
Jay Avery III (33.56)

Women:
Nancy Gardner (43.35)
Elizabeth Kordick (44.98)
Lynn Larsen (48.37)

13.1 Miles

Men:
Jim MacNider (1:07.30)
Kevin Pickell (1:11.00)
Brian Claxton (1:13.38)
Women:
Karen Judge (1:40.37)
Anita Berkey (1:41.52)
Faith Walkwitz (1:54.34)

In spite of adverse conditions Jim MacNider who repeated his first place showing this year ran a better time than last year.

Age was no major factor in the races. Two 12 year-olds, David Finch and Shane Beisner, both competed in the 6.0 mile race; Richard King, age 59, completed the 13.1 mile race.

INDIVIDUAL PRIVATE OFFICES

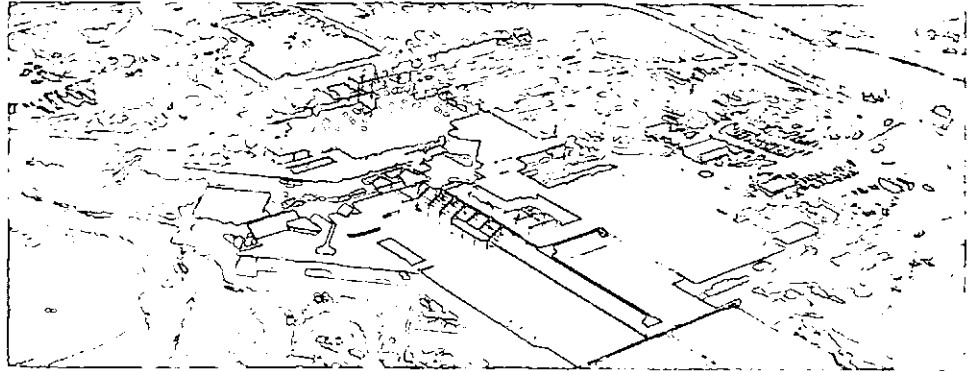
*Fully furnished, equipped
and staffed offices for less
than the cost of a
secretary.*

We offer tastefully decorated, modern offices complete with reception, conference room, telephone answering, professional secretarial support and all business services.

ADMINISTRATIVE ASSISTANCE CORP.

The Office Services Company
113 Fairfield Way, Suite 205
Bloomington, Illinois 60108
(312) 980-5600

STRATFORD CONSTRUCTION REACHES HALF-WAY MARK



Stratford Square Shopping Center, Bloomington, IL

Inland Construction Inc. has passed the half-way mark in construction of the 729,000-square-foot regional shopping center underway since April 30, 1979, in Bloomington.

Inland project manager John Onufrock said work is proceeding on schedule toward a March 9, 1981 grand opening of the two-level mall with its 180 shops and boutiques, four department stores — Marshall Field & Company, Carson Pirie Scott & Company, Montgomery Ward & Co., and Wieboldt Stores, Inc. — and restaurants and theaters.

Onufrock credited a construction management technique called "fast tracking" for maintaining a tight schedule.

"Under this system, early construction phases are designed, bid and underway while subsequent stages are still on the drawing boards," he said. "It also means we try to schedule as many different jobs as possible to be accomplished in tandem rather than in sequence."

Onufrock presented the following status report:

- Site preparation is complete, including the excavation and grading of a structure site the size of 23 football fields; construction of foundations and caissons; and installation of site utilities, including almost 10 miles of water and sewer lines up to 8 feet in diameter.

- The task of assembling 3,000 tons of steel for the two-level mall building is more than the two-thirds complete.

- As steel work nears completion, the roof will be erected to include a 5-inch bonus layer of insulation, earning an R-20 insulation rating, a level traditionally attained only in residential buildings. Additional energy saving will be produced by bronze reflective skylights of laminated and annealed glass that produce a highly favorable light transmission rating of 17 percent.

- When the roof is well underway, work will begin on the steel stud and brown brick veneer of the mall and tenant building.

- Paving of Stratford Square's 65 acres of parking area will begin when the soil is dry. The job calls for more than 315,000 cubic yards of concrete and 7.6 miles of curbing.

- The heating, ventilation and air conditioning system will be installed while the building is being enclosed. Because of special insulation treatments in the roof and elsewhere, Inland has been able to reduce the capacity of the system to 600,700 cubic feet of air per minute, barely a third of that required in less efficiently insulated structures of similar size.

- In tandem with work on the heating and air conditioning units will be the installation of the building's mechanical systems and utilities, including water, plumbing, gas and electricity.

- Special attention will be devoted to construction of the four Plitt movie theaters on the second level, and of the 20-foot-high, 75-foot-long waterfall in the mall. The theaters, featuring a suspended steel structure, will be the last thing completed in the building. As for the waterfall, the task requires such exact craftsmanship that to have it ready for the scheduled March 1981 grand opening, Inland has scheduled work to begin as soon as the roof is on.

The center and the surrounding 873-acre planned community of Stratford are being developed by Urban Investment and Development Co., a subsidiary of Aetna Life & Casualty, the nation's largest publicly owned insurance and diversified financial organization.

Approximately 4,000 single- and multi-family housing units also are planned for the community, which is bounded by Army Trail Road, Lake Street, the Indian Lakes Country Club and Gary Avenue.

BRIDGE O'RAMA WINNERS



Co-Chairperson Sundee Luedecke admires hand held by Marilyn Gordon at June Bridge O'Rama.

The Fourth Annual Bridge O'Rama sponsored by the Bloomingdale Woman's Club was won by Judy and Bob Dortone of 180 S. Circle Drive, Bloomingdale. The winning pair amassed 38,650 points in the 10 nights of rubber bridge played at the Village Hall.

Placing second in the tournament were Messrs. John Fish of 29W535 Sunnysdale Ct., Bartlett and Jonathon Howell of 266 Durnam Lane, Bloomingdale, with 32,440 points. Third place honors went to Ron and Billi Davenport of 939 Clearwater, Roselle, with 31,520. Finishing in fourth place were Sherry Hatfield of 495 Hampton Lane, Roselle, and Sara Laschober of 36 E. Thorndale Avenue, also in Roselle; their total point score was 30,840.

Twenty six couples began the monthly play of 20 hands of rubber bridge last October. Play is held on the fourth Wednesday of the month.

Co-Chairwomen for the 1980-1981 Bridge O'Rama are Sundee Luedecke (894-1788) and Ann Hatt (980-0208).

They advise that there will be some openings for next year so give either of them a call if you are interested in playing rubber bridge once a month beginning in September. Additionally this year they are looking for people who would like to play occasionally but not every month and would be willing to have their names listed on the "Substitute Roster".

CALLING ALL ARTISTS

The Bloomingdale Women's Club will hold its 8th annual Festival of Fine Arts on Sunday, September 14, 1980 at Bloomingdale State Bank, 114 E. Lake Street, Bloomingdale. Applications are now being accepted from artists who wish to have a booth at the Festival. This is an all juried fair. The entry fee is \$15.00.

Each artist is asked to send five colored slides or photos of the work they will be exhibiting by September 4, 1980. The medias are: oil/acrylics, watercolors, metals, fiber, clay/ceramics, wood, mixed media, photography, pen/ink, charcoal, etc. Cash prizes will be offered.

For further information contact Ann Hatt or Barb Rex at Box 271, Bloomingdale, Ill. 60108. We are hoping to attract over 100 artists and craftsmen to this year's Festival.

The proceeds of the Festival will be donated to the Care and Advancement of the children of Bloomingdale, equally divided between the Friendly Corner, Learning Center, The Children's Center and the Bloomingdale Women's Club Scholarship Fund.

Attention exhibitors as well as residents. 8th Annual Septemberfest sponsored by the Bloomingdale Historical Society will be held September 14 from 11 AM to 6 PM. For more information call Dolores Howe at 529-0787.

FREE HEALTH SCREENINGS

Health Encounters '80, a health screening program, will be sponsored by the DuPage County Health Department on Monday and Wednesday evenings, July 28th and 30th in the North Satellite Office of the Health Department, 1111 W. Lake St., Addison, Illinois.

Screening tests available include blood pressure, diabetes, height and weight, hemocult, hemoglobin, self-breast examination and vision and hearing. Education will be available on the topics of environmental health, family planning, health history, how to perform self-examination for oral cancer, mental health, nutrition and substance abuse. At the completion of the tests, each participant will be counseled by a Public Health Nurse as to the meanings of the results. Appropriate referral and follow-up will be provided.

Appointments are necessary for this program which will begin at 4:30 p.m. and end at 8:00 p.m. both days. To make appointments, call the North Satellite office at 620-3325 between 8:00 a.m. and 4:30 p.m., Monday through Friday.

There is no charge for this service. This program is intended for anyone between the ages of 18 - 59 years.

Bloomingdale Photography Experts

Try us and see
Just how inexpensive
Quality can be.

Bring in this ad and receive \$1.00 off
the finishing of any fresh roll of film.

Classic Photo Inc.

Old Town Square, Bloomingdale • 47 E. Fullerton, Addison
Phone: 980-1510 • Hours: T-TH 9-6 • M-F 9-9 • SAT. 9-6

MARKLUND HOME WANTS 15 MINS.

Marklund Home, located in Bloomington since 1957, is asking individuals, clubs and other organizations to spend 15 minutes to hear and see their multi-media color presentation of the children, their programs and their needs.

The home was established by Claire and Stanley Haverkamp to service the seriously retarded infants as well as children to the age of 18 needing specialized professional care. Such service entails taking care of children who through birth or other circumstances have acquired severe brain damage, rare hyperkinetic problems or incurable diseases.

Located at 164 S. Prairie, Marklund provides total support for the children including educational and recreational areas, sleeping quarters, food service, medical assistance and - most importantly - love and care for the approximately 100 non-ambulatory children of ages one month to 17 years.

Licensed by the state as a nursing home, a staff of 150 professionals includes nurses, therapists, consultants, technicians, pediatricians and aides. A complete dental office is also located on the premises.

Children are placed in the home through hospital newborn nursing facilities throughout Illinois or brought in after parents view the home.

To quote a spokesman of the home, "It is hard for people to understand, but some of these children are either so helpless or hypertensive that they need constant attention and medication. This presents a problem for some parents who cannot physically or mentally cope with such a situation."

Because of the nature of their conditions, most of the children will never go home; a majority stay for life which usually ends at puberty, a crucial turning point in their lives.

Presently Marklund is working towards raising enough funds to expand the school facility and increase the size of the kitchen and library. The existing school facility would be used for increasing therapy needs.

For further information about the home and its activities, contact either Claire Haverkamp or Julia Ryan at 529-2871. Spare 15 minutes.

NEW LIBRARY PROPOSED



Artist's Rendering of Proposed Library

The Bloomington Public Library Board of Directors is taking constructive steps to relieve the crowded conditions and deterioration of the current library building by seeking approval from The Bloomington Village Trustees for a bond issue this fall to finance a new facility.

The present building of 1,500 square feet has been outgrown by book collection and heavy community use. Finding space to shelve books is becoming increasingly difficult. It is expected that by the end of the current fiscal year the library will be forced to choose between storing books or purchasing no new titles. The 17,000 volumes housed in the building leave a study area for only 10 people and no space for library programs.

Also, repairs have become increasingly expensive on the building, which was purchased as a used structure 5 years ago. At that time it was intended as a temporary library until a permanent facility could be erected.

The proposed plan for the building, designed by Arthur Jaki and Associates of Bloomington, would meet Bloomington's space and service needs for the next 15 to 20 years, during which time the population of Bloomington is expected to double.

Additional information concerning the proposed referendum is available at The Bloomington Public Library, 101 Fairfield Way.



YOUR FULL SERVICE REAL ESTATE

Residential, Commercial, Industrial

Owner operated • Involved in our Community

Blue Ribbon Realty

111 East Irving Park Road
Roselle, Illinois 60172

Telephone: 529-2235

181 South Bloomington Road
Bloomington, Illinois 60108

Telephone: 894-1900

NATIONWIDE OVERNIGHT MAIL DELIVERY

Bloomington area residents can get overnight mail delivery to more than 600 cities with Express Mail, the Postal Service's new guaranteed delivery service, Postmaster James Sutter announced recently.

"Express Mail became an official class of mail October 9, 1977," stated Sutter. "Since then, we have been steadily expanding the number of cities area customers can reach."

What began as an experimental overnight delivery service in 1970 between five cities and Washington, D.C. is now available from most major metropolitan areas in the country. Its delivery record during the years of testing has been outstanding with more than 95 percent delivered within 24 hours.

"Locally deposited Express Mail shipments meet our guarantees more than 98 percent of the time," Sutter said. "But if we don't perform as promised, the entire postage amount can be refunded, unless the delay was caused by strike or work stoppage."

Sutter said other Express Mail features include mailing items weighing up to 70 pounds, merchandise insurance up to \$500 and document reconstruction insurance up to \$50,000 at no additional charge. A customer can, for example, combine letters, merchandise,

and business records in a single shipment. There is no extra charge for letters sent as part of the shipment.

To use Next Day Service a customer takes the shipment to an Express Mail post office any time before 5 p.m. The package will be delivered to the addressee by 3 p.m. of the next day or it can be picked up by the addressee at the destination post office as early as 10 AM.

The two Express Mail post offices in this area are located in Roselle and Itasca.

There is also a Custom Designed Service for business mailers with the need for regularly scheduled high speed delivery, according to Sutter. A prior agreement between the Postal Service and the customer, setting forth the schedule of service between specified origin and destination points, will be arranged prior to starting this service. Service is offered to and from any combination of the customer's premises, designated post offices and airport mail facilities and is available 24 hours a day, 365 days a year, to and from over 23,000 communities.

Postmaster Sutter urges customers to contact the post office at 529-5252 for complete details on the local availability of these services.

WE STILL WANT TO KNOW

In the April issue we asked our readers to answer a one-page survey about the ALMANAC. As we go to press we have received 44 completed surveys or approximately 1% of the total number of copies delivered each issue.

We wish to thank those who did respond. For those who didn't respond we have repeated the survey in this issue.

We would like to have at least a 10% response which would be indicative of the total population. So please take a few minutes and complete the survey. Either mail it to or drop it off at the Village Hall. You may also deposit the completed survey in the night deposit box if you are unable to get to the Village Hall during normal hours. Final results of the survey will be printed in the August issue of the ALMANAC.

TEENS READY FOR WORK

The Bloomington Womens' Club is once again sponsoring a Teen Work Program for Bloomington teens 12 years of age or older.

If you have been putting off cutting your grass or washing your windows, or if your floors need cleaning, the BWC asks you to call the Teen Work Program. For more information please call any of the following:

893-5169 893-2374 893-2279 980-0892

The Bloomington Park District has applications for teens who wish to work in the program.

HOTEL OPENS

Indian Lakes opened their hotel doors June 2.

The first guests to sign the register were professional athletes from out of town who came to the Resort for the 10th Annual Brian Piccolo Cancer Research Fund Golf Outing held on Monday, June 3rd.

With the addition of the hotel the 260-acre facility is now called Indian Lakes Resort. On June 20 the new bi-level restaurant facility will be serving full meals on the upper level while guests can grill their own steaks and hamburgers on the lower level in the Frontier Room.

The 305 rooms and 23 guest suites all offer a view either of the surrounding landscape or of the open atrium with natural greenery and a cascading fountain.

A formal grand opening is scheduled for later this season.

BLOOMINGDALE STATE BANK

announces the opening of our

SPRINGBROOK BANKING CENTER

*Now 3 Convenient Locations
TO SERVE ALL YOUR BANKING NEEDS*

"We have a daily interest in you"



BLOOMINGDALE STATE BANK

114-118 East Lake Street • Bloomington, Illinois 60108

Phone 980-2200

GLENDALE HEIGHTS BANKING CENTER

**310 East Army Trail Road
Glendale Heights, Illinois 60137**

SPRINGBROOK BANKING CENTER

**136 East Lake Street
Bloomington, Illinois 60108**

Member FDIC

WHAT DO YOU THINK? WE WANT TO KNOW . . .

Please answer by checking the appropriate box following each question.

How do you receive the ALMANAC?

mail; at the Village Hall; other;

If answer is other, please explain: _____

How many of the articles do you read?

all; three-fourths;
 half or less (glance through);

Have you ever used a coupon for one of the advertisements in the ALMANAC?

yes; no;

Have you ever used the services of one of those merchants listed in the directory after seeing their ad?

yes; no;

Do you save back issues of the ALMANAC for reference?

yes; no;

Do you find articles in the ALMANAC?

easy to read; difficult to read;

Do you find the length of articles?

too long; too short;
 about right;

Do you feel the news of the Village Hall is:

one-sided; accurate;
 incomplete;

How much news from Village Hall would you like to have?

more; less; about the same;

Do you read local newspapers on a regular basis?

yes; no;

Which of the following do you read?

"Bloomingdale Star"; "The Voice";
 "Bloomingdale Press";

Have you ever written an article or a letter to the ALMANAC?

yes; no;

Was the article or letter printed?

yes; no; (If no, please explain what article was about) _____

How often would you like to receive the ALMANAC?

monthly; bi-monthly; quarterly;

The ALMANAC frequently runs stories about Village officials, Village business people, and residents with unique backgrounds or hobbies. Would you like to see:

more; less; about the same;

How do you like the use of pictures?

too many; not enough;
 about right;

The overall appearance of the ALMANAC is:

excellent; average; poor;

In the space below we would appreciate any other comments you may have about ways to improve the ALMANAC. We thank you for your time and cooperation.

Name (optional)

Address (optional)

BEARS TO ROAR AGAIN

"He may be on the light side but he is fast in getting off the ball. Last season he was one of my leading tackles. One team had to use two offensive linemen to try to hold him and even that didn't work."

Professional football scouts talking at summer camp? No, just a couple of enthusiastic Bloomingdale Bears coaches looking forward to the coming season.

The Bloomingdale Bears were started as a private organization in 1959 by Bill Pope, a former Village resident, to enable more children to participate in football and baseball. In 1964, when the Park District was established, the Bears were incorporated into the District's activities. In 1970 the Bloomingdale Athletic Club was reestablished as a private club since the Park District could no longer continue to support the organization's activities.

One of the men instrumental in the reorganization of the club was Mr. Fred Malawski of 169 Cardinal Drive who took over the reins at that time. Malawski had moved to Bloomingdale in 1968. His three sons, Fred Jr., Mike and Matt, have or are currently participating in the program. In fact, Fred Jr. was just offered a spot on the Chicago Lions semi-pro football team for the coming season.

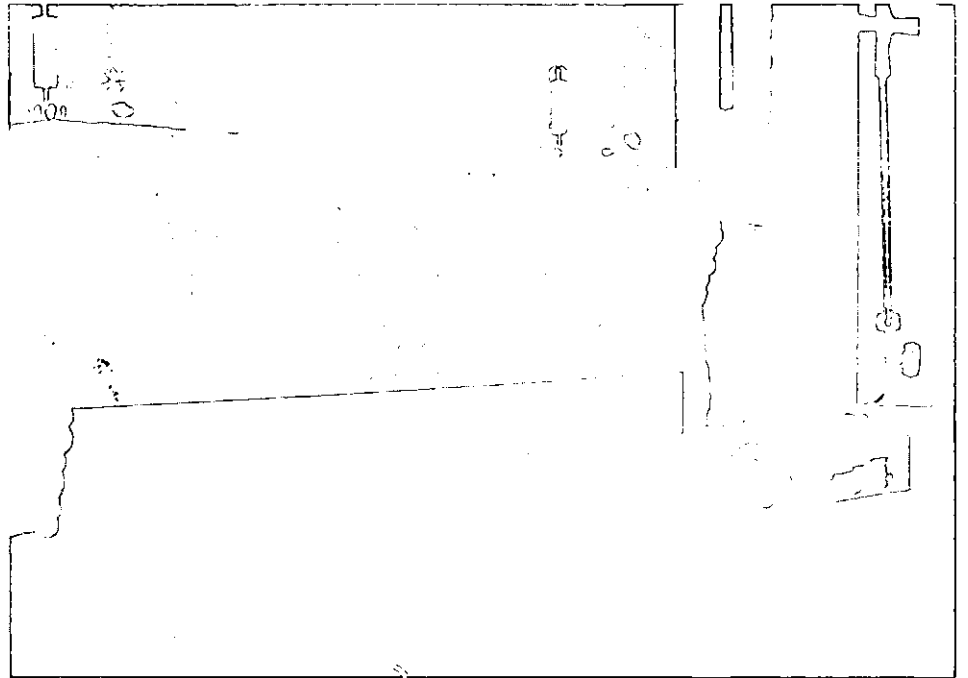
In 1970 the club fielded two teams; by 1975 they had ten teams in football and ice hockey. In 1978 the hockey group formed their own organization.

The Bears plan on fielding 7 football teams this fall from children between the ages of 9 and 14 who weigh between 70 and 125 pounds. Every child who tries out for the team is guaranteed the opportunity to play. Residents from Bloomingdale, Itasca, Medinah and Roselle are eligible to participate.

States Fred Malawski, "The Bears objective is to instill self-discipline and team spirit in youth through sportsmanlike conduct in a competitive atmosphere. Additionally, the 38 coaches who work with the more than 300 youths gain a better spirit of cooperation and integrity through their participation."

Anyone interested in participating as a player or coach should contact Mr. Joe Chiaro at his office, 893-7570, or home, 893-1180.

ST. ISIDORE'S CELEBRATES GROUNDBREAKING



In spite of heavy rains on June 1, St. Isidore's Church still held their groundbreaking ceremony. They moved a piece of sod from the site into the church and proceeded with the ceremony.

The Reverend Thomas Havelik, former Abbot of St. Procopius Abbey in Lisle, was the celebrant at the special mass assisted by the pastor, Father Arthur Maher.

Although designed primarily as a church to accommodate the rapid parish growth, the building has been designed by Robert Drews & Associates of Chicago to serve other purposes where large groups will be assembled.

The new church which will be located north of the existing building on Army Trail Road will have masonry exterior and interior walls, terrazzo floor

and an acoustical ceiling. The 16,000 square foot area is of shed roof design and will feature full air conditioning as well as heating and a complete sprinkler system for fire protection.

Of the 13 contractors who submitted bids, Fitzimmons-Rill Inc. of Northbrook was the low bidder at a cost of \$877,000. Additional improvements to the surrounding area such as sewer and water, landscaping and a roadway leading to new Gary Road will bring the total cost to approximately \$1,200,000.

Stated Father Maher, "Obviously this structure which we hope to occupy in March of 1981 will do much to relieve the overcrowding at many of our Sunday masses; however, we will retain the old church for use at weddings and other occasions where smaller groups can be accommodated."

BWC SETS FUND-RAISER RECORD

A record-breaking profit was realized by the Bloomingdale Women's Club at their Fashion Show held April 19, 1980. The largest fund-raiser in the club's history allowed them to donate over \$7,000 to Mr. DeMoon, the hospital administrator, for the pediatric ward of the newly opened Glendale Heights Hospital in Glendale Heights.

The check was presented to Mr. DeMoon during the club's annual banquet on May 8, 1980 at the Clubside Inn in Glendale Heights. New officers were also installed at the banquet. They include Marie Tayfel, President; Mary Jo Faye, First Vice President; Barbara Rex, Second Vice President; Pat Maxwell, Secretary; Nancy Kimnetz, Treasurer; and Kitty Cooney, Historian.

CHIEF'S CORNER



Patrick J. McMahon
Chief of Police

As a motorist driving through the Village of Bloomingdale during the past month, you have most likely noticed that your travels were easier. During late May, the Village of Bloomingdale removed one hundred and nine of the previous one hundred and seventy nine stop signs that had literally infested our street corners.

The purpose of this undertaking was to remove unneeded signs and to conserve residents' fuel by eliminating the need for them to make the unnecessary stops. Stop signs are gas-eaters. Studies have shown that eliminating one stop sign from the average motorist's daily travel saves \$37.00 a year.

Research conducted by the Police and Engineering Departments demonstrated that many of the stop signs were not warranted. Many of them were erected with the thought that they would force drivers to stop tearing through the neighborhoods, but the stop signs just are not the safety factor that people believe them to be.

Traffic control experts state that the signs actually can cause accidents. The signs sometimes come up unexpectedly, and drivers have to slam on their brakes. That can make them lose control of their cars. And, a proliferation of the signs can cause motorists to develop contempt for them and ignore crucial signs at dangerous intersections. The signs often cause drivers to increase rather than decrease their speeds, based on results of a study in Michigan two years ago.

In many cases, a driver will simply slow down, roll past the sign and then accelerate even faster to make up for lost time. Using stop signs to slow traffic is unauthorized by Federal Highway Authority criteria which specify that the signs "not be used for speed control." The criteria, which legally must be followed throughout Illinois but are largely ignored, also say stop signs may be posted only at intersections where:

- 1) Five or more accidents of a type that signs could prevent have been recorded in a year.

- 2) Traffic volume averages 500 vehicles an hour for any eight-hour period for the busier streets and 200 an hour for the other streets.

(In the Suburban Trib of June 2 writer Bill Geist stated: "But now against this trend to more and more repressive regulations in our lives, comes the Village of Bloomingdale. In a shocking display of common sense, that western suburb has just removed 133 of its 250 stop signs." Editor)

SIDEWALK SUPERINTENDENT

NOTE: With the widespread construction going on throughout the Village, the ALMANAC has initiated a regular feature entitled "Sidewalk Superintendent" to keep residents abreast of current and proposed building within the Village. We are indebted to Director of Building and Zoning Joseph M. Stella for providing us with this information.

STRATFORD SQUARE

The West Suburban Bank of Carol Stream is planning a 7,000 square-foot one-story banking facility at the northeast corner of Army Trail Road and Wheaton Road. Plans are currently being reviewed; construction should begin in July.

Talman Federal Savings and Loan is also planning a banking facility in this area. Detailed plans will be forthcoming in July or August with construction to start in September.

Montgomery Wards recently broke ground for their new store, making this the fourth major store in the center to begin construction.

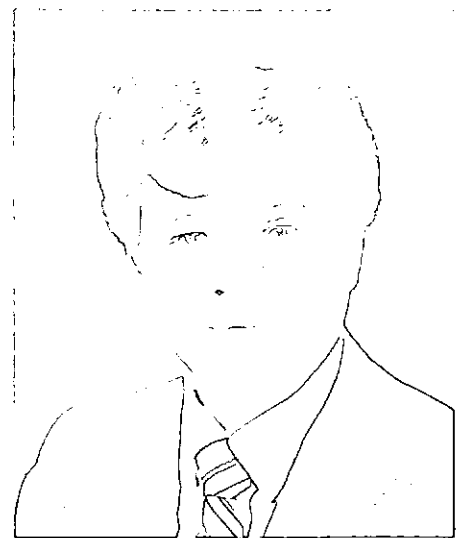
(NOTE: Urban Investment is responsible for the construction of the Mall building but each of the four major tenants — WIEBOLT'S, CARSON'S, MARSHALL FIELD'S AND MONTGOMERY WARD'S — is responsible for the construction of its own store.)

CIRCLE SHOPPING CENTER

In addition to the opening of Sal's Finer Foods, two other shops have opened: Herbener T.V. Sales and Page's Schwinn Cyclery Sales & Service.

ST. ISIDORE'S CHURCH

Plans for a new multi-purpose building have been submitted for review. The building will have a seating capacity of 975 and will be constructed just north of the existing church with access also from the new Gary Avenue. Ground-breaking was held on June 1st. (See story elsewhere in this issue.)



MICHAEL HATT

BLOOMINGDALE JAYCEES ELECT HATT PRESIDENT

The Bloomingdale Jaycees recently elected new officers and directors for 1980-81. Michael Hatt was elected president. He had previously been the chapter's public relations director and succeeds Jerry Hussey, who becomes chairman of the board.

Rod Pedersen was elected state director. He was previously internal vice president and is a past president of the Jaycees. Jerry Gooding was named internal vice president. Gooding was the chapter's state director during the past year. Ed Carter will be the chapter's external vice president. Carter was previously internal vice president.

Scott Burritt was elected treasurer and is the first time he has held an elected position in the Jaycees. Noel Kohl, who chaired the 1980 Outstanding Citizens Banquet for the Jaycees, was elected secretary.

ECON-O-MART 110 S. Ridge Road

— Look for:

- Purina Chows • Morton Salt • Moore Paints • Pioneer • Riviera • Pepsi • Colgate • Planters • Durkee Spices • Motor Craft • Heinz • P&G • Kendall • Smuckers • HTH • Vigoro • Bolens • M&M Mars • Hunt-Wesson • STP • Hotsum • 7-Up • Coca-Cola • La Rossa • Spinney Run Milk • Ray-O-Vac • Hitachi • Hoover • Toshiba • Dee-Cee Jeans • Pampers • Venice-Maid • and crowded with

2,000 other items!

"CIRCUS OF BOOKS"

Summer will be a "Circus of Books" and activities for elementary school children at Bloomingdale Library. June, July and August days can be filled with the challenge of reading and reporting on 25 books to reach a goal of "Ringmaster". A surprise gift from one of six participating local merchants will be given to each "Ringmaster". The Dogfather, Econ-o-mart, Dunkin' Donuts, Pete's 7-11, Walgreen's, and Sporty's have offered their generous support and great Treat Coupons.

When a child signs up, his name will appear on a clown head in a three-ring circus and he will receive a record-keeping booklet and bookmark. An "achievement" party will be given in his honor on August 23.

Like a Pen Pal from another country? It's fun to receive letters and stamps from across the world. Children can sign up for the country and Pal of their choice; just ask us!

Pennies to spare? Just a few from everyone in our piggy bank and the "Children of Bloomingdale Library" will have their own adopted animal at Brookfield Zoo. Our name will be on a sign at the zoo, and children can visit their own animal friend.

ORGANIC GARDEN CLUB ANNOUNCES SUMMER AND FALL MEETINGS

The Organic Garden Club has scheduled its July meeting for Thursday, July 10 at 7:30 P.M. here in Bloomingdale. July's meeting will include "Gardening on a Small Scale" by Marcella Gross and "Grass: An Organic Gardener's Idea of Growing a Lawn" by Lisa Hirsburnner. For information concerning the July meeting, call 653-3958 or 893-3570.

During the August meeting on Thursday, August 7 at 7:30 some of the members of the club will bring a dish made from produce obtained from their own garden and will make available the recipe for the dish they share that evening. For information about the August meeting call 653-3958.

Hanover Park will be the location of the September meeting. The club will meet on Thursday, Sept. 4 at 7:30 and will listen to Dorothy's presentation, "Dorothy's Garden: Then and Now." Various members will also share visits they made to unique and special gardens during the past summer. For information call 837-6082.

TREES, TREES, TREES

The Bloomingdale Garden Club celebrated Arbor Day April 25th by distributing 971 small white pine trees (measuring 12 to 18 inches) to the children of DuJardin and Central Schools as well as the Marklund Home.

In distributing the trees club members hoped that the children would have the opportunity to watch their own trees grow; additionally planting the trees would assist in beautifying the Village.

Also Mrs. Dale Armon of 151 N. Bloomingdale Road is expanding her Pet Rescue operation. As a result she is offering fruit and honey locust trees to any persons willing to dig them out. Please call Mrs. Armon at 893-0030 from 9 AM to 3 PM daily.

Garden Club officers for this year are: President, Margrethe Carter; Vice President, Barbara Perry; Recording Secretary, Ethel Williamson; Corresponding Secretary, Doris Smith; and Treasurer, Betty DeVries.

The Club is always interested in new members. For further information contact President Carter at 529-5239.

WELCOME WAGON SUMMER ACTIVITIES

The Welcome Wagon Club of Bloomingdale has several activities coming up during the summer for people of all ages.

For the ladies the club is offering a trip to the Hager Pottery on July 9. For Moms and their tots the Club has scheduled an outing to Blackwell Woods Beach on August 5. In September they are holding a couples barbecue.

The organization was established with the purpose of welcoming new people into the Village and providing them with a variety of social interests as well as cooperating in working to benefit the people of the Village.

Officers for this year are: President, Carolyn Hamilton; First Vice President (Programs), Cathy Wittrock; Second Vice President (Membership), Nary Stahly; Treasurer, Toni Taylor; Historian, Bonni Rothbaum.

Currently the organization is looking for ways in which they can assist the community. Any thoughts on this matter can be given to President Hamilton at 980-0307. She is also happy to discuss membership with any interested parties.

TREATMENT PLANT EXPANSION

(The following report from Village Engineer Daniel C. Wennerholm may answer questions of residents regarding current sewage treatment. Editor)

The Village is presently expanding the sanitary sewage treatment plant at Glen Ellyn Road and Edgewater Drive. Construction began in October, 1979 and completion is scheduled for November, 1980. This project will increase the capacity of the facility from the present 1.6 million gallons per day (MGD) to 3.3 M.G.D.

The total cost of the project is to be approximately \$6.5 million. The Village has an agreement with Urban Investment and Development Corporation whereby Urban is "fronting" 62.5 percent of the cost. This amounts to approximately \$4.0 million. The remaining \$2.5 million is funded by the Village through the issuance of revenue bonds.

The project, in addition to increasing the capacity, will also upgrade the quality of the treated water. There are basically three types of treatment plants: Primary, Secondary, and Advanced. Ours is presently "Secondary" and will be upgraded to "Advanced" status.

CHURCH DIRECTORY

- Bloomingdale Alliance Church 893-3066**
Pastor: David Riemenschneider
260 Glen Ellyn
Bloomingdale
- Bloomingdale Baptist Church 980-6161**
Pastor: Phillip Yntema
245 Bloomingdale Road
Bloomingdale
- Bloomingdale Community Church 980-6077**
Pastor: Patrick Pazdsiora
Westfield School (Temporary)
Bloomingdale
- Christ The Redeemer Lutheran 529-8290**
Pastor: Kenneth A. Stoyer
241 Army Trail Road
Bloomingdale
- Indian Lakes Community Church 893-2920**
Pastor: Ray E. Stauffer
Black Hawk School
Glendale Heights
- St. Isidore Catholic Church 529-3045**
Pastor: Arthur J. Maher
227 West Army Trail Road
Bloomingdale
- St. Paul United Church of Christ 529-6173**
Pastor: James P. Beecken
First and Washington Streets
Bloomingdale

“WHAT DO YOU THINK?”

Light at Schick and Bloomingdale?????

After ten years of driving the long way around to get my six kids to the other side of town to DuJardin School, the pool, ball games, etc., we finally have a through street (Schick Road). And now I am driving the long way around because of constant traffic in all directions at the intersection of Bloomingdale Road and Schick Road. Give us a break! Let's push for badly needed traffic lights at this corner before someone gets killed.

Margaret Wesolek, 180 Cardinal Drive

At press time the results of a traffic study were being reviewed. Further discussions are being held with DuPage County which is responsible for maintaining Bloomingdale Road to determine cost allocation for the project which is expected to be approximately \$200,000.

Editor

Abandoned Cats???

For over 20 years I have been the recipient of almost every stray and abandoned cat that came my way. My heart has been broken so many times because I could not find an owner or an adopter for these cats. What can be done to stop this cruel abandonment of poor, defenseless animals. Even Pet Rescue hasn't been able to help on most occasions. What can a citizen do?

Mrs. Rose Turicci

Unfortunately pets abandoned in the Village are often brought from somewhere else and left here. Hopefully your comments will cause some people in the Village contemplating abandonment of pets to think twice before doing so.

Editor

Dog Litter???

Could you please print something about an ordinance against dog litter? I live in the Westlake Quads and have several neighbors, one in particular, who let their dogs litter anywhere, including the sidewalk! This makes for a very unfortunate situation for other owners, and particularly for small children. Can dog owners actually be ticketed for this offense?

Name withheld upon request.

Village ordinances do prohibit dog owners from leaving dog litter on any public thoroughfare or on anyone else's property. For further assistance contact Ordinance Officer Len Notz of the Bloomingdale Police Dept. at 529-9868.

Editor

Lake Street A Parking Lot???

Every day I must go to and from work during rush hour. Lake St. from Bloomingdale Road to Rte 53 (entrance to 290) is many times a parking lot. It's taken me many times 1 hour to go from Bloomingdale Rd to Rte 53!!! Can't anything be done? Help, this is very frustrating,

not to mention time I've lost from work because I was late. The reverse is true in the evening rush hour.

Lorraine Daniels, 128 Oak Street

This is a problem caused by growth in the entire western suburban area. Two major programs would offer the relief you are looking for: (1) the extension of "53" to Butterfield Road as an expressway which would eliminate some of the northbound morning traffic; and (2) the construction of the Elgin-O'Hare Expressway which would go through Roselle and Hanover Park relieving some of that burden. Unfortunately neither of these projects will be completed in the near future.

Austin Field Parking???

I live across the street from Austin Federal Field. The numerous ball games coming up will cause the usual traffic problems and dangerous driving and walking conditions. Watching the field activities, it appears there is more than enough area to provide parking in the field rather than on the street. Perhaps the Village Board could consider the "activity-parking" conditions at Austin Field?

According to Park District Director Tom Lovern, to provide off-street parking requires a paved lot which expense at this time is prohibitive. Presently there is no parking allowed on the west side of Winston and all parking is prohibited within 100 feet of the intersection at Winston and Edgewater. Editor

OPINION FEATURE

Please tell us if you have any suggestions or questions for your Village. What you think is important to us. Write your thoughts below, then detach and mail to "What Do You Think," Village of Bloomingdale, 201 S. Bloomingdale Rd., Bloomingdale, IL 60108. No unsigned submissions will be considered. The ALMANAC reserves the right to reprint all or part of the submission depending upon length. We do, however, try to retain the gist of the query.

My thoughts are as follows: _____

Name _____ Address _____

Print my name: Yes _____ No _____

BLOOMINGDALE BUSINESS DIRECTORY

ACCOUNTANTS

Robert M. Schoen
Certified Public Accountant
107 South Bloomingdale
980-4121

ACCOUNTANTS

Donald McLean & Co., Chtd.
181 S. Bloomingdale Road
894-9470

ACCTG - DATA PROCESSING

J. LeBurkien & Associates
252 Sterling Lane
893-7248
Customized Small Business Systems

APPRAISER

Donald J. Altier, S.R.A.; R.M.
267 Royce Ct.
832-7666
Real Estate Consultant

ATTORNEY AT LAW

Carl A. Champagne
109 Fairfield Way
529-3355
Chgo. Off: 100 W. Monroe 726-3248

ATTORNEYS AT LAW

Jakala, Knechtel, Valentino, Demeur
& Dallas
130 N. Bloomingdale Rd., Suite 104
893-9132
Chgo. Off: 20 N. Wacker Dr. 726-5342

ATTORNEY-AT-LAW

Wayne L. Mular
112 W. Lake Street
980-7447
General Practice

BEAUTY SALON

Pat's New Image
276 Glen Ellyn Road
893-4080
Beauty & Boutique Salon

CAMERA SHOP

Classic Photo Inc.
Old Town Square
156 S. Bloomingdale Road
980-1510



Village Of
Bloomingdale

201 S. BLOOMINGDALE ROAD
BLOOMINGDALE, ILLINOIS 60108

BULK RATE
US POSTAGE
PAID
Bloomingdale, Ill.
60108
Permit No. 16

POSTAL PATRON, LOCAL
BLOOMINGDALE, ILLINOIS 60108

CHIROPRACTOR

Bloomingdale Chiropractic Clinic
Dr. James Dean, D.C.
181 S. Bloomingdale Rd.
980-5460

CLEANERS

Colbridge Cleaners
166 S. Bloomingdale Road
Old Town Square Shopping Center
893-8082

DENTIST

Robert Meyers, D.D.S.
201 E. Army Trail Rd.
893-4650
Office hours by appointment

DENTIST

James Paradowski, D.D.S.
255 E. Lake Street
529-7130
Office hours by appointment

GENERAL CONTRACTING

Bach Builders
232 Clearbrook
980-7460
Residential & Commercial Remodeling

GENERAL MERCHANDISE

Econ-O-Mart
110 Ridge Road
529-5490
You're invited to browse and save.

HARDWARE

Warnimont's True Value Hardware
23 W. 745 Lake Street
529-3030
Comm. Edison Bulb Service

INSURANCE

Farmer's Insurance Group
Larry Zidek Agency
135 S. Bloomingdale Road
893-1900

INSURANCE

State Farm Insurance
Larry Beeman Agency
107 S. Bloomingdale Road
529-0114

MAGIC — GIFTS — NOVELTIES

Magique
159 West Lake Street
980-4980
Good deals in laughs and smiles

PHARMACY

Bloomingdale Pharmacy
Bloomingdale & Schick Roads
980-9198 or 980-9199
"Your Family Drug Center"

PRINTING

Print Master
185 E. Lake Street
980-1100
Instant and Commercial Printing

RESTAURANT

The Dogfather
Old Town Shopping Center
Bloomingdale & Schick Roads
893-6522

SECRETARIAL SERVICES

Administrative Assistance Corp.
113 Fairfield Way, Suite 205
980-5600
"The Office Services Company"

TRAVEL AGENCY

Classic Travel & Tours
166 S. Bloomingdale Road
980-7900
Computerized Reservation Service

VETERINARIANS

Bloomingdale Animal Hospital
Drs. Borman, Olson & Page
290 Glen Ellyn Road
893-4330