



# The Village Almanac

OFFICIAL PUBLICATION OF THE  
VILLAGE OF BLOOMINGDALE

Volume 7, Number 3

June, 1982

## An Open Letter To The People of Bloomingdale:

On March 11, 1983 the Village of Bloomingdale will celebrate its 150th Anniversary of incorporation.

This is a major milestone in the history of our Village. We hope everyone in our community shares our pride in the growth we have achieved. We hope that the local organizations will play key roles in our Sesqui-centennial events throughout the year.

We are looking forward to the people in Bloomingdale becoming excited about our celebration commemorating the beginning of our Village.

For information on what you can do, call Village Clerk, Marie Tayfel, or the Events Director, Paula Luberdia at 529-7904.

*Marie E. Tayfel*  
Village Clerk

## COMMENDATION

Bloomingdale recently received a Certificate of Commendation from the Illinois Environmental Protection Agency. The commendation is in recognition of our contribution toward protecting public health in 1982. Bloomingdale provided safe drinking water which has met or exceeded the water quality standards set forth in the Safe Drinking Water Act, and has exhibited exemplary performance in meeting or exceeding all sampling requirements.

## Bloomingdale Old Town Developments

A group of Bloomingdale citizens are attempting to have the Old Town area of the Village rezoned as historical land. The dual purpose of this move, according to Joanne Hildt, formerly of the Old Town Commission and now a member of the Plan Commission, is to 1) establish boundaries for the Old Town area, and 2) to write an ordinance covering the zoning of the area to establish what can and can't be done in Old Town.

The ordinance has been sent back to the Village Attorney, Ron Cope, for further legal work. The ordinance already proposed was termed too general and not specific enough for Bloomingdale. According to Village Trustee Robert Iden, the project will most likely take another three to six months to finalize. The most important accomplishment on any such ordinance, according to Iden, is to make sure that nobody gains and nobody loses from the change in the ordinance.

Iden also confirmed that the Village is now attempting to acquire property for a new parking lot in Old Town. Various parcels of land are being looked over for the Village Board's consideration. A total of \$30,000 has been allocated for this project.

In other news from Old Town, Pat Stevenson and Dave Heil of the Old Town Development Company have announced that two new stores have been opened in Old Town; The Candy Jar and The Country Bin, both at 107 S. Third St. The Candy Jar opened on February 1 and the Country Bin began business on April 1.

Also, the building at 124 W. Lake St. has been rehabilitated and rented out as of July 1. Shops to be located in this new location include, according to Heil, a toy store, a craft shop and an art supply store.

The building at 126 W. Lake should be ready for occupancy by the middle of July, according to Heil, and will include an antique shop and possibly a sandwich shop and an old-time barber shop.

Perhaps the most exciting news from Old Town is the possibility of the Cody's Hotel project. This completely new building, designed by Heil for the Old Town Development Company, will look like a turn-of-the-century hotel and will contain four or five shops (coffee house, pastry shop and flower shop). According to Heil, Cody's Hotel is 60% to 70% rented and could be completed as soon as November if the go-ahead is given soon for the project.

# VILLAGE HALL HAPPENINGS

Samuel J. Tenuto  
VILLAGE PRESIDENT

Marie F. Tayfel  
VILLAGE CLERK

Robert F. Reeves  
VILLAGE ADMINISTRATOR

## TRUSTEES

James LeBurkien  
Finance & Budget  
Finance Commission  
E.S.D.A.

Community Development Commission

Walter Cropper III  
Ordinance, License &  
Public Relations, Park District,  
RTA Services

William Horvath  
Public Works

DuPage Water Commission  
Regionalization Committee

Roy Brodersen  
Police, Health & Safety

Board of Fire & Police Commissioners

East Indian Lakes

Sanitary Sewer Committee

Robert Iden  
Plan Commission

Architectural Review  
Old Town Commission  
Cable TV Committee

Mary Lou Vanda

Zoning, Building & Street Maintenance

Library Board

Suburban O'Hare Commission

## ROAD CLOSURE

GARY AVENUE (County Highway 23) is scheduled to be closed to thru traffic between Schick Road and Lake Street in the Bloomingdale/Roselle area on June 2nd, to allow for reconstruction of the road to four lanes. Work is expected to be completed by the Fall. During construction, thru traffic will be detoured via Army Trail Road and Bloomingdale Road.

## Protect Our Lakes

We had recently received a complaint from a resident of Indian Lakes that an oil-slick was floating on Lake Illini. This occurrence prompts our desire to inform the residents, as follows:

The Village of Bloomingdale is blessed with several natural or man-made lakes and streams which provide not only aesthetic quality, but flood protection, as well. These lakes are all connected to our storm drainage system which drains large areas of residential and commercial properties.

There have been instances, where, apparently, people have dumped liquid or solid waste materials into catch basins or manholes. What happens is that this pollutes all of the lakes downstream, and also the rivers or creeks in and outside of the Village. Even a small quantity of oil from an oil change can create a significant nuisance. Other materials also can be a source of visual pollution or even kill wildlife in these areas.

Your efforts in properly disposing of your refuse will help protect our environment. Please notify the Police Department if you observe anyone dumping any substance in catch basins or manholes.

*The public is encouraged to attend all Board & Commission meetings.*

## REGULAR MEETINGS OF THE VILLAGE BOARD

2nd and 4th Monday of every Month  
7:30 P.M. — Village Hall

## COMMITTEE OF THE WHOLE

1st and 4th Monday of every Month  
7:30 P.M. — Village Hall

## PLAN COMMISSION

1st and 3rd Tuesday of every Month  
8:00 P.M. — Village Hall

## BOARD OF FIRE AND POLICE COMMISSIONERS

3rd Thursday of Every Month  
7:00 P.M. — Village Hall

## POLICE PENSION BOARD

Quarterly beginning in January  
2nd Monday,

7:00 P.M. — Village Hall

## FINANCE COMMISSION

1st and 3rd Wednesday  
of every Month

7:30 P.M. — Village Hall

## OLD TOWN COMMISSION

3rd Wednesday of every Month  
8:00 P.M. — Village Hall

## LIBRARY BOARD OF DIRECTORS

2nd and 4th Wednesday  
of every Month

7:30 P.M. — Village Hall

**DEADLINE  
FOR THE AUGUST ISSUE  
IS JULY 25**

## HELP WANTED Meter Reader Part-Time

Village needs a reliable person available during the daylight hours starting in the Fall to read water meters. Must like walking and the outdoors. For more information, please call Sandy at 893-7000. Apply weekdays at Village Hall, 201 S. Bloomingdale Road between 8:30 - 4:30.

## Pension Officers Elected

A Regular Election was held among the active members of the Bloomingdale Police force to select two officers to serve as members of the Police Pension Fund. Officer David E. Raney and Chief Patrick J. McMahon are the newly elected officers who will represent the Police Department on the Police Pension Board. The other two members on the Board are Eleanor Alumbaugh and Patricia Cropper, both of whom were appointed to their positions by the Mayor and Board of Trustees.

VILLAGE ALMANAC  
is published bi-monthly by  
The Public Relations  
Committee of the  
Village of Bloomingdale.

Editor,

Mary Ellen Johnson - 351-1503

Production Assistants

Don Lively

Thomas Miodoch

Address all correspondence to:

Village of Bloomingdale  
Public Relations Committee  
201 S. Bloomingdale Road  
Bloomingdale, IL 60108  
Phone: 893-7000

# TREE PLANTING PROGRAM

## BARIUM VARIANCE

*In this and future issues of the "Almanac", we will be notifying our water customers of a Variance. The Illinois Pollution Control Board, based upon testimony submitted by the Village Engineering Consultants, and a favorable recommendation from the Illinois Environmental Protection Agency, granted in a Variance to the Village. This variance allows us to deliver water from our Well #8 with a maximum limit of barium of 4 mg/1. (milligrams per liter).*

*There is no reason for concern by our customers since there is no evidence from the I.E.P.A. that this level of barium is harmful. We are taking positive steps towards maintaining the water supply in compliance with the old limit of 1 mg/1. This involves the installation of a new well which we will blend with Well #8 water and dilute the concentrations of barium.*

*We are projecting completion of a new blending well in late 1983. Our variance expires on January 1, 1984.*

*We are hopeful that this information will alleviate concerns of our water customers.*

## NOTICE

A concentration of barium in the drinking water of the Village of Bloomingdale presently exceeds the 1.0 mg/1 allowable concentration set by the Illinois Environmental Protection Agency. The Village, on April 29, 1982, received from the Illinois Pollution Control Board, a Variance from the barium standards which is valid until January 1, 1984. The average content of barium in water produced by Well No. 8, is 2.8 mg/1. There is no evidence that this concentration presents a threat to the health of water consumers.

As a part of the Budget, the Village Board has allocated \$5,000.00 as 50% of the cost for the purpose of planting trees in Parkways along Village Streets. This type of a program has been used in other communities with good results, and adds to the aesthetics of the Village.

The following guidelines will be used for the program:

1. Trees would be planted during the Fall season by a contractor hired by the Village.
2. There would be a limit to two (2) new trees per parcel frontage.
3. Cost of the tree and planting would be split 50/50 between the Village and the owner making the request.
4. Requests will be date stamped on a receipt and will be on a first-come basis. These requests should be addressed to the Director of Public Works.
5. Owners will be responsible for proper care and watering.
6. Guarantees will be limited to that which the contractor provides, one-year.
7. All trees will be 2-1/2" caliper in compliance with the Village Subdivision Ordinance, with balled and burlapped roots. Choice of trees will be as follows, with the *approximate* cost to the owner shown:
 

	Owner's Cost	Village Cost
A. Norway Maple	\$75.00	\$75.00
B. Sugar Maple	95.00	95.00
C. Green Ash	70.00	70.00
D. Skyline Locust	75.00	75.00
E. Sycamore	80.00	80.00
8. Some locations may not be permitted due to utilities or safety. Each site will be reviewed by the Village prior to planting.
9. The owners share must be paid in advance of planting in the Fall season, but not with the initial request.
10. If the response is such that not all requests can be handled, the requests will be kept on file for a possible future program.

More information will follow in the next issue, but if residents have questions, they can call the Public Works Department at the Village Hall.

## SCHICK and BLOOMINGDALE ROAD

The much-needed improvement of this intersection is now underway. This project, which will include new traffic signals, is being done on a cost-sharing basis with DuPage County. Final completion is scheduled for mid-summer. The total cost of this project will be approximately \$180,000.00. Partial funding by the County and local developers will reduce the Village share to approximately \$70,000.00.



"We've been peddling" since 1958"

The Most Unique Family Owned  
and Operated Business in Town.

**Econ-O-Mart**

110 SOUTH RIDGE  
BLOOMINGDALE, ILLINOIS 60108  
529-5490

# The Mayor Reports: PROPERTY TAXES — 1982 Village/Library

The past few weeks have realized several questions regarding this year's higher property taxes. Certainly, I cannot respond with respect to other government bodies (county, township, schools, park, etc.), however, I can present a comprehensive review of the portion pertaining to Bloomingdale Village and the Library.

First, the village tax rate has decreased, and we are one of a very few villages able to make that claim. On the other hand, we are now beginning to pay for the new library, the cost of which is now being reflected in our taxes.

This year's rate, \$.7894, is composed of a \$.4467 rate for the Village and a \$.3427 rate for the Library. Last year's rate, \$.6415, was composed of a \$.4805 rate for the Village and a \$.1610 rate for the Library.

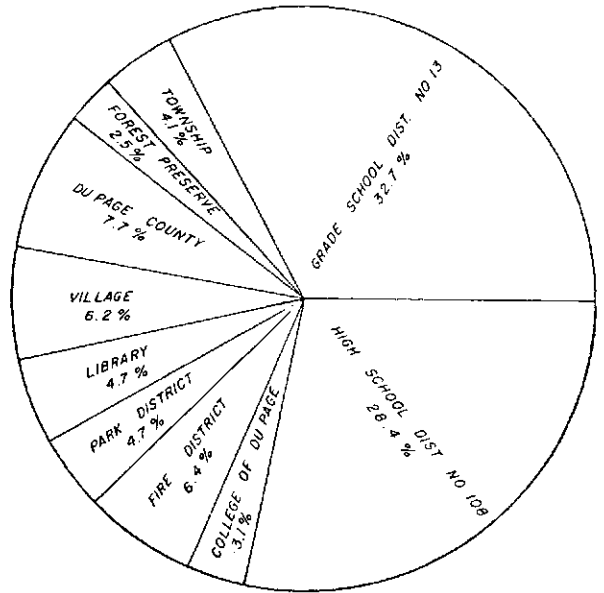
When the Library Board was authorized by referendum several years ago, the District was organized as a Village Library system with an independently elected Board; but with a tax levy *combined* with that of the Village. This is why there is no line on your tax bill for the Library; it is included in the line for the Village. The Library Board and the Village Board are separate and independent for the determination of their respective budgets and tax levies.

Although the rate for the Village itself went down from \$.4805 to \$.4467, the Bonds authorized by the voters for the Library construction caused the Library rate to increase from \$.1610 to \$.3427. For a home assessed at \$19,316.00 last year, the Village received \$92.81 and the Library received \$31.10. The same home this year was assessed at \$21,728.00; and the Village will receive \$97.06 and the Library will receive \$74.46.

The 1981 Village tax rate would have increased \$.1106 if it were not for the Village Board's abatement (reduction) of \$138,000.00 in property taxes from your tax bill.

Since 1979, the Village Board has abated \$96,500.00 in 1979, \$98,700.00 in 1980, and \$99,800.00 in 1981. This is a total of \$433,400.00 in property tax abatement in four (4) years. Had the Village not reduced your taxes by this amount, a home assessed at \$20,000.00 each year would have paid an additional \$93.02 for these past four (4) years.

The following circular graph depicts a typical tax bill breakdown by percentage:

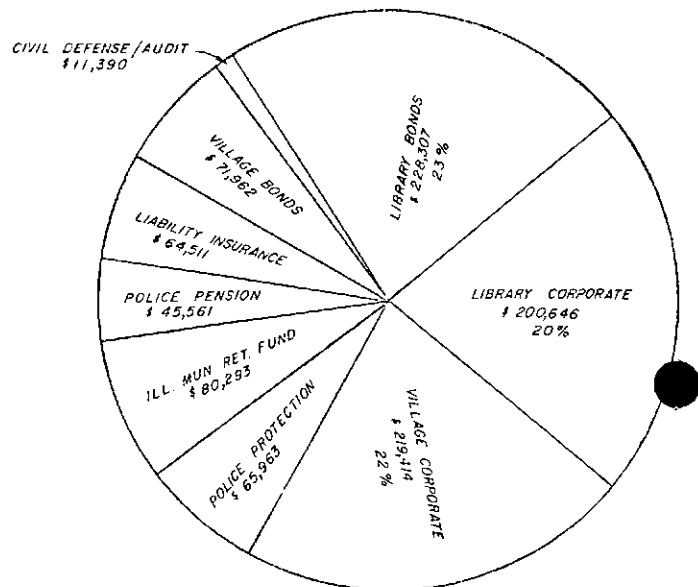


**Typical Tax Bill Breakdown**

In closing, our Village tax rate of \$.4467 is one of the lowest in DuPage County. Bloomingdale is indeed fortunate to have established a sound commercial base so vital to carry us through these difficult financial times.

## 1982/83 BUDGET

The circular graphs show the various major components of the 1982-83 Fiscal Budget. The first graph shows the dollar amounts to be received from property taxes for both Village and Library. This dollar amount is reflected in the tax rate shown on your property tax bill as a \$.7894 total; with the Village portion as \$.4467 and the Library portion as \$.3427. The Village rate decreased about four cents from last year; while the Library rate increased by \$.1817 primarily due to the Bonds authorized to construct the new Library.

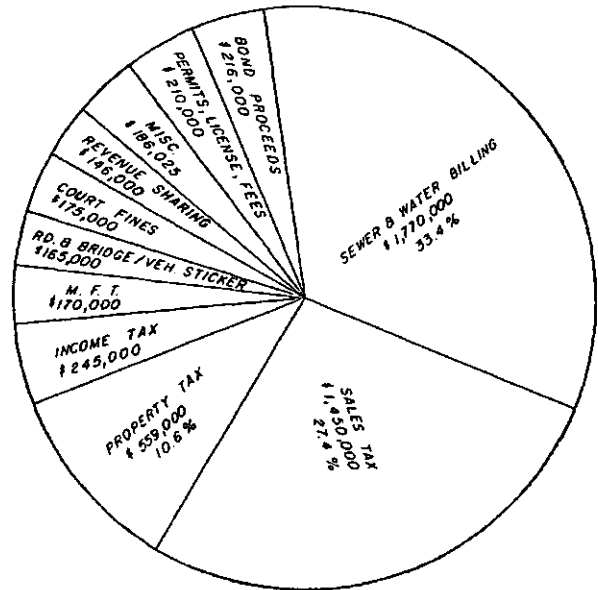


# BUDGET

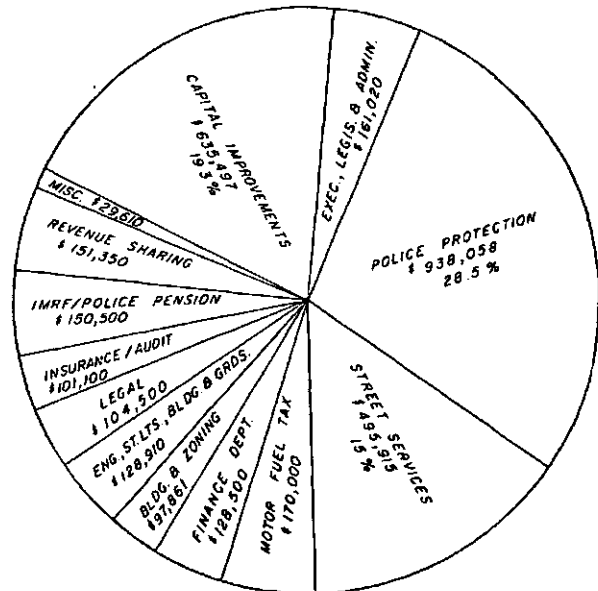
Continued from Page 4

The second graph shows the source, for the Village of Wheaton, of the percentage of total. The largest Revenue and Sewer and Water Revenue for Corporate the largest single source of Revenue is Sales Taxes at 27.4% of total receipts. Property taxes shown are for the Village only, not the Library.

The forecasted Sewer and Water Revenues in 1982/83 will come primarily from Billings, due to the building slump.

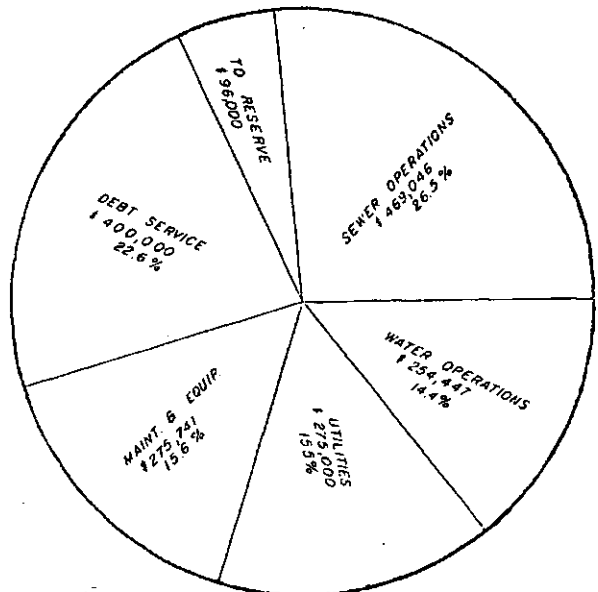


The third graph shows forecasted Expenditures in Corporate by dollar allocations and percentage. The largest components are for Police Services at 28.5% and \$938,058; Street Services at 15% and \$495,915; and Capital Improvements at 19.3% and \$635,497. The Street Services and Capital Improvements accounts cover such items as street repairs at \$130,000, traffic signals at \$184,000; new and replacement equipment, and Schick and Wheaton Road construction repayments at \$380,000.



The fourth graph covers forecasted Sewer and Water Expenditures by major components in dollars and percentage. The Debt Service of \$400,000 and 22.6% is for Revenue Bonds issued in 1965; 1973; and 1979 for Wells, storage towers, and sewer plant expansion. The Reserve allocation of 5.4% and \$96,000 is for repairs to equipment necessitated from time to time. In the past two years, for example, about \$400,000.00 has been spent to repair two of our Wells.

The Maintenance and Equipment allocation at 15.6% and \$275,741 is for programs and equipment to facilitate the upkeep of the extensive capital investment in Sewer and Water lines, plant, Wells, etc. This investment in physical facilities is estimated at in excess of \$40,000,000. The replacement costs would undoubtedly be greater.



# SPOTLIGHT

**Trustee Roy Brodersen**, this month's Trustee in the Spotlight, spent six years teaching but has found working as a Trustee to be a learning experience. Today Roy is an Elementary School Principal. Many of his responsibilities in his full-time position have afforded him experiences similar to those he faces as a Trustee.

In the school environment Roy must implement new programs; in the Village he has taken part in developing new programs to insure the quality growth of Bloomingdale. As a principal Brodersen is a liaison between students and staff, as well as an informational source for families with difficulties. As a Trustee he serves as a liaison for the Board of Fire and Police Commissioners and the East Indian Lakes Sanitary Sewer Committee, and of course, finds himself, as do the other Trustees, to be a sounding board for residents with difficulties.



Roy chose to run for the Village Board because he felt this is an important period of time for the future planning of the Village and he saw a need for the Village Board to work together.

Trustee Brodersen and his wife Carol Ann have resided in Bloomingdale for eight years and have two sons, Brad and Shawn. The Brodersens found Bloomingdale attractive because of its rural image while still being close to Roy's work. Roy is an avid water - sportsman. He has scuba dived in the Carribean and last

summer sailed across Lake Erie. His reading habits are no less exciting; Roy's favorite authors are Frederick Forsyth and Robert Ludlum, both spy thriller authors.

What Roy finds most frustrating about being a Trustee is the difficulty of getting clear information from every side and on all facets of an issue before helping to make a right decision. And, of course, there is a lot of time spent away from the family.

But after a year of what Roy called "feeling his way" he acknowledges it's hard for the layman to enter into the realm of running a multimillion dollar business, which is what the Village essentially is. Keep at it, Roy. They say a good teacher makes a very good learner.

## Glenside/Bloomingdale United Way

The Glenside/Bloomingdale United Way kicked off its 1982 fund drive during the April board meeting with a flurry of appointments to several key positions.

Board President Steve Kling announced the appointment of Sheldon Morjoseph as the 1982 campaign chairman, Marge Peterson accepted the post of treasurer and Fay Smith was installed as budget chairman.

The Glenside/Bloomingdale United Way is teaming up with its member agencies in an aggressive fund raising effort planned for this Fall. The money collected in each of the communities serves local residents through donations to eleven inde-

pendent, non-profit community service organizations that operate programs in Bloomingdale, Glendale Heights and Glen Ellyn Countryside.

The Glenside/Bloomingdale United Way is one of 92 suburban United Ways covering 195 suburban communities participating in the United Way/Crusade of Mercy.

Contributions will benefit the Marklund Home, Family Shelter, the Ray Graham Association, Boy Scouts, Girl Scouts, Campfire Girls, Community Nursing Service, Family Service Association, B.R. Ryall YMCA, Catholic Charities, and the YWCA West Suburban.

## MODEL MAYOR

Mayor Sam Tenuto was not only a VIP guest at the BWC Fashion Show on April 24th. He delighted the audi-



ence by also taking part in the show as a model. Proceeds from the "Carnival of Fashions" were given to the Marklund Home in Bloomingdale.

# Sidewalk Superintendent

by Richard E. Haberstich, Director of Building & Zoning

Listed below are the latest updates on commercial business from the Building & Zoning Department.

STRATFORD MALL....(The following opened recently)

**Prints Plus — Prints & Frames**  
**The Book Branch — Christian Book Store**  
**Stratford Shoe Repair — Shoe Repair Service**

STRATFORD MALL....(The following are under construction)

**Nature's Pathways — Health Food Store**

AROUND STRATFORD MALL....(Under construction)

**McDonalds Restaurant**

IN OTHER AREAS OF THE VILLAGE....

SPRINGBROOK SHOPPING CENTER....(Opened Recently)

**Bavarian Crystal Manufacturing Outlet — Bavarian Crystal & Gifts**  
**Dominicks Finer Foods**  
**Wicker Corner (Opening Soon)**

CIRCLE CENTER...(Opened Recently)

**Litta's Ceramics — Gifts/Greenware/Lessons**

OLD TOWN SHOPPING CENTER....(Opened Recently)

**Country Ceramics — Make your own gifts/Classes Days & Evenings**

## STREET REPAIRS - 1982

During the Budget review process, the Engineering and Public Works Departments prepared a list of Village streets which are in need of repairs and resurfacing. Based upon the list, which was prepared on a priority basis, the Village Board has made available this year approximately \$175,000.00 for the program.

Many of these streets will be repaired first by our own forces, prior to resurfacing by an outside paving contractor in an effort to reduce costs. Based on our preliminary estimates of cost, the following streets will be included in this year's repairs, to be completed in late summer or early fall:

1. Public Works Garage Drive
2. Colony Court — Entire
3. Brentwood Court — Entire
4. Dover Court — Entire
5. Harvard Lane — Entire
6. Greenway — Entire
7. Byron — Glen Ellyn Road to Fremont
8. Euclid — Ironwood Drive to Circle Avenue
9. Lakeview Lane — Edgewater to Circle
10. Eagle Lane — Entire
11. South Maple — Oak Street to Lake Street

In addition, we are planning for the purchase of additional equipment to be used for a preventative maintenance program.

## Home Town Pride

Illinois citizens have been organizing to contribute to their towns' economic progress and quality of life. By taking the initiative on a project, mobilizing volunteers and raising funds, community leaders have successfully addressed a local need in a time of reduced State and Federal resources. In February, 1982, Governor Thompson announced the Governor's Home Town Awards Program to recognize communities' organizations which have addressed a local need and organized citizens to attain specific goals.

The program was created to honor outstanding community initiatives because the success of the community economic development and the quality of community life ultimately rests with the efforts local leaders and citizens are prepared to make.

Communities recently submitted Home Town Award Project books which document efforts and experiences in defining their goals, assessing their resources, implementing and maintaining their projects. A wide variety of community betterment projects was submitted including: downtown development; local industrial marketing; energy conservation and volunteer ambulance service.

Our Village's entry was the revitalization of the Old Town area. The comprehensive planning of the area, formation of the Old Town Commission, and the continuing commercial development were all shown by narrative and photos. See related stories on future plans and new developments occurring in Old Town elsewhere in this issue.

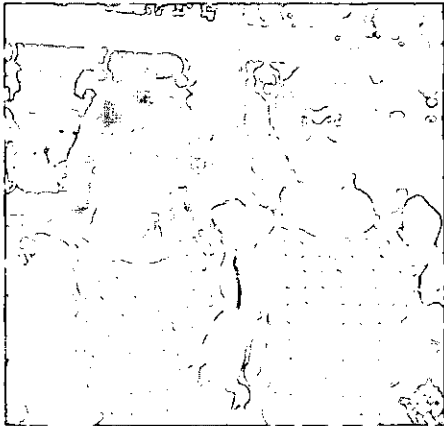
# New Business Briefs

**The Candy Jar, The Country Bin, and P.J. Heating & Air Conditioning** are three additions to the Old Town area which capture the spirit of 19th Century America and offer merchandise with the personal touch for today's living.

## THE CANDY JAR

Located at 107 Third Street, The Candy Jar is operated during the week by Jackie Goczkeski. She is assisted on weekends by her husband, son and daughter. Jackie's vast experience as a professional interior decorator is evident in the detail with which the store captures the turn-of-the-century atmosphere.

The store is a trip back to childhood for we found types of candy we have not seen in years, but due to inflation the "penny candy" is now 2¢ each. If you have a sweet tooth you



will find it hard to make a choice among the over 300 varieties of candies delivered weekly to insure freshness and quality. Jackie's assortment of candies includes: hand-dipped chocolate made by third generation candy makers; "the best fudge around" from Minnesota; imported candy from Germany and Sweden; old-fashioned sponge candy and the shop's specialty - Lollipops.

Lollipops of all sizes and descriptions are on display. If you don't find one you like, just ask and Jackie will have one made especially for you. In addition to special order

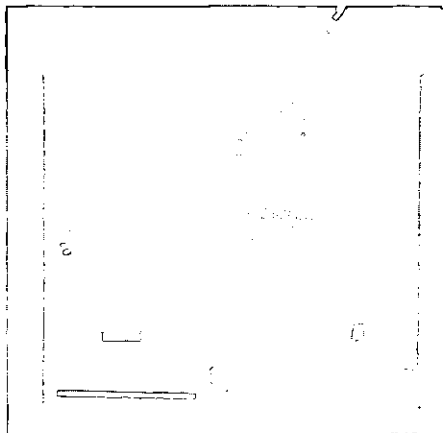
gifts, she can handle quantity needs like a recent order for 450 lollipops for a local school program.

In the near future the shop will be adding a popcorn machine along with seasonal items like old-fashioned caramel and candy apples. In addition to candy, a nice selection of children's gifts and antiques are also available. If you are having trouble finding a special treat or just something for your sweet tooth, you might find The Candy Jar is the place for you.

## THE COUNTRY BIN

The Country Bin craft shop is operated by two sisters, Linda Cordina and Debbie Schaefer. Linda says this is her first business, but the way in which the shop is decorated and merchandised hardly has the look of beginners. The Country Bin, as well as The Candy Jar, is located in Bloomingdale because of the Old Town program and the need for their types of business.

With the exception of a selection of fine antiques, all of the quality crafts in The Country Bin are handmade. Examples of the items available are: personalized pillows made to order, dolls, stuffed animals, wall hangings and plaques, floral arrangements and center pieces. The list goes on and on.



If you have not been by recently you don't know what you are missing for new merchandise is being added all the time. In fact, while we

were there a woman was delivering her handmade wall plaques made of pretzels. Linda explained that when she and her sister opened they had twelve crafters working for them. Today they have over 80 people making hundreds of items. As a result of their growing business they are constantly looking for new sources of high quality merchandise.

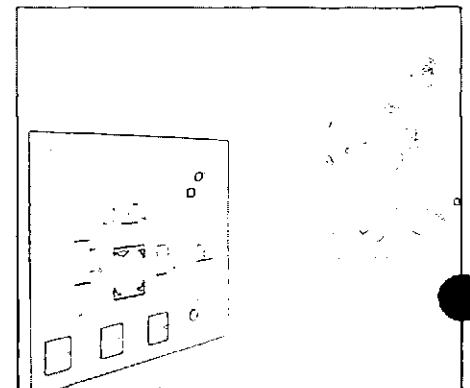
Because of the wide assortment of merchandise to choose from you will not find any duplication, making the store a real joy to look through. If you do not see what you want - just ask. Linda said that about 60% of her sales are special order.

The sisters' motto is to offer high quality merchandise at very fair prices. If you have a need for a special gift or an accessory for your home, chances are you will find just what you are looking for at 107 Third Street, The Country Bin.

## P.J. HEATING & AIR CONDITIONING

Making 20th Century systems blend with the tradition of 19th Century Old Town was the challenge for P.J. Heating & Air Conditioning which just opened for business at 120 N. Bloomingdale Road. Owners Jim and Pete Wykle took their 100 year old house, and while retaining the natural beauty of the old home, installed a modern solar energy/heat pump system for heating and air conditioning. Pete showed us the solar panels located on the roof.

He told us that at today's rate of inflation, in five years energy costs could double your current electric and gas bills. Solar systems have





very low operating costs and low maintenance expense. In addition, until 1985 the cost of installation will qualify for a 40% tax credit up to a maximum of \$4000. To better understand how the equipment works a display, which is located on the lower level of the house, graphically shows the step by step process through which nature is turned into energy to heat and cool your home.

If you are more conventional, P.J. Heating & Air Conditioning also offers high efficiency heating systems, heat pumps and central air conditioning. Other lines of merchandise include water heaters, electronic air cleaners, humidifiers, water softeners and custom fireplaces.

In addition, Jim and Pete's business offers a commercial energy management service to help make offices, schools, churches and condominiums more energy efficient. Many local businesses are currently customers of this service.

There is also a department set aside for the "Do It Yourselfer." If you want to install your own air conditioner, heating system, or any of the above mentioned items, you can get all of the parts needed to do the job from this section.

P.J. Heating & Air Conditioning has been serving the Bloomingdale area for over 11 years and welcomes the opportunity to serve you.

### Speakers Bureau Established

The physicians and other health professionals at the Glen Ellyn Clinic, S.C. and its satellite office, the Bloomingdale Medical Center have established a speakers bureau.

Speakers are available to discuss a variety of health-related topics at no charge, i.e. migraine headaches, childhood illnesses, sports medicine.

To arrange a speaker, please contact Susan McGilligan, Director of Public Information at 469-9200, ext. 389.

### Freelance Photographer

"Could you take glamour pictures of my horse?" was perhaps the most unusual assignment requested of Guy J. Cardarelli in his five years of freelancing.

During that time, Mr. Cardarelli has built a solid reputation for his speciality work with models and entertainers. "Although I do many types of people pictures, models and entertainers are my favorites."

With studio space and the great outdoors as a background, Guy has created some memorable and exciting photographs. In the next few years, "I hope to establish myself as one of the best model and promotional photographers in the suburbs," concluded Guy.

Guy can be reached at 980-1316 evenings and weekends.

### APPLE COMPUTER OWNER'S EXCHANGE

If you're an Apple Computer owner, you know the frustration of having to print something out in a hurry... and the printer's fritzed. Or, you need instant access to some important data... and your disk drive dies. Maybe you just prefer to ask a question of a neighbor, instead of somebody 30 miles away.

To help solve those problems, a local Apple owner has volunteered to set up an "Apple Exchange" for Bloomingdale residents only. For \$1.00, you can list any equipment you'd be willing to let another member use (not borrow) on an emergency basis. Naturally, you'll have the same privilege from other members.

The Exchange will work like this: You drop a card to Bloomingdale Apple User's Exchange, P.O. Box 72289, Roselle, Illinois 60172. You'll receive a form to return as your "registration." The Exchange will qualify the respondents, and furnish a list of phone numbers to members only.

Interested? Send that postcard today.

### Bloomingdale Medical Center Means Quality And Convenience

Bloomingdale area residents have discovered that the Bloomingdale Medical Center, 177 S. Bloomingdale Rd., Bloomingdale, a division of the Glen Ellyn Clinic, S.C., offers many conveniences.

Its location in northwest DuPage County makes it a real time and energy saver for many clinic patients. Not only can patients see their physicians at this office, but general lab and x-ray procedures can also be performed there.

Physicians specializing in pediatrics, internal medicine, allergy, dermatology and obstetrics/gynecology are regularly scheduled at the Bloomingdale Medical Center. A neonatologist (specializes in caring for the newborn during the first four weeks after birth) is affiliated with the pediatrics and obstetrics/gynecology staffs. The neonatologist also serves as a resource for individuals preparing to become parents.

As part of the Glen Ellyn Clinic network, on-call medical coverage for each specialty is provided 24 hours a day.

In addition to fine medical service, the Bloomingdale Medical Center provides complete financial services. Patients may make payments and handle insurance claims directly through the Bloomingdale office.

And if a patient needs further medical attention, the many other specialists at the Glen Ellyn Clinic are always available for referral. The following list of direct dial numbers facilitates making an appointment at the Bloomingdale Medical Center.

Pediatrics..... 893-9100  
Obstetrics/Gynecology.... 858-3200  
Internal Medicine..... 790-2550  
Allergy..... 790-2550  
Dermatology..... 790-2550



# CHIEF'S CORNER

by Patrick J. McMahon Chief of Police

## BWC Scholarships

With the warmer vacation months, the number of bicyclists on our streets has drastically increased. Motorists should be alert to the potential dangers created by these young bicyclists. Parents should take steps to educate their children in the proper use of their bikes.

In spite of the fact that a bike rider is required to obey the Rules of the Road as a motor vehicle operator must, many riders fail to consider the consequences of their actions. Bikes are far less visible than automobiles and offer absolutely no protection to riders upon collision. In 1981, 271 bike riders were injured in bike versus motor vehicle accidents in DuPage County. The incidence of these occurrences can drastically be reduced through safer bicycle driving habits.

The Bloomingdale Police Department have issued citations and will continue to issue citations to bicyclists who blatantly disregard normal safety procedures. Through the issuance of these citations, it is hoped that such undesirable habits will be changed and a possible tragedy averted.

Each year officers of the Bloomingdale Police Department visit the local schools to discuss bicycle safety with the students. Additionally, bike safety inspections have been conducted in which sworn officers check youngsters' bikes for possible defects.

The following suggestions are intended to help make this summer the safest bicycling summer in Bloomingdale's history.

- Always ride in the same direction as existing traffic.
- Stay close to the curb.
- Do not pass at intersections or railroad crossings.
- Do not weave from lane to lane.
- Always ride in single file when you are with cyclists.
- Do not carry passengers. Follow the rule of one passenger per seat on a bicycle.
- Never hitch a ride by holding on to cars or trucks.
- Watch for cars making right turns.
- In passing rows of parked cars, be alert for the possibility of car doors being suddenly opened.

The Bloomingdale Women's Club proudly announces the three Scholarship Winners for 1982. Jody McGinley, graduating senior at Glenbard North, will be attending Northern Illinois University majoring in Accounting. Sharon Rota and Susan Patterson are both graduating seniors at Lake Park. Sharon will be attending the University of Iowa majoring in Pharmacy/Medicine and Susan will be majoring in Business Management at College of DuPage.

This is the fourth consecutive year the BWC has given \$500 scholarships. Requirements to be eligible for the scholarship include Bloomingdale residency, financial need and a "C" or better average. Past winners include Karen Miller, beginning her final year at Harper in September; Scott Christiansen, Chief Illiniwek, a junior in September at U of I; and Kathy Mulroy, attending medical school at Loyola.

The BWC is proud of each of their scholars and extends heartiest congratulations and best wishes to their newest scholarship recipients. As of next September, a scholarship will be available to Bloomingdale women returning to school to further their education. Details on this will be available in the future.

## DISTRICT 13

### BITS & PIECES

Mrs. Sally Pryor has been appointed Assistant Principal of DuJardin School by the Board of Education.

Mrs. Pryor has served as Interim Assistant Principal since January. She has now completed requirements for her Certificate of Administration at the National College of Education. She received her B.A. and M.S. degrees at Nazareth College, Rochester, New York, and served as teacher and unit leader at

Central School in District #13 for four and a half years.

Summer school classes in District #13 will meet from June 21 through July 17, with no classes on July 5. Classes will run from 8:30 A.M. to 11:30 A.M. Remedial, general, enrichment, and learning disabilities classes will be offered.

Principal for this year's summer

school is Michael Zivic.

And finally, School District #13 is grateful for the many, many hours of volunteer work that have been given to the schools this year. We couldn't begin to list the names of all students, parents and community members who have given of themselves for the children in the District. We would like to express our public appreciation.

## FROIO SCHOLARSHIP

Donna Beth Froio was a vibrant, sensitive young lady who passed away three years ago at the age of 16, a victim of Lymphoma Hodgekins. All who knew her were moved by her strength in the face of her illness.

In her memory Donna's parents set up a Trust through an endowment to provide the Donna Beth Froio Scholarship. This scholarship is intended to favor students who have goals similar to those Donna had wished to attain. As the Trust is open-ended, it does accept donations and the Froios are very grateful to all those

people who have contributed to keep alive the memory of a young lady with great hopes and plans.

This year's recipient is Linda Rose Carlotti. Linda intends to become a teacher of Special Education as she has a personal interest in learning disabilities. Ms. Carlotti has been involved in Student Government at Lake Park High School for three years, volunteered services to the Heart Association and held down a part-time job to help cover her college expenses.

## BUILDING OR REMODELING? Some Tips From The Building Department

As the weather warms, many of us begin to take an objective look at our homes — considering various improvement projects. In Bloomingdale, we are basically seeing the same building trends as are evident across the country. The building of single family residences is extremely down, as are the commercial developments, but not quite as drastically. Remaining consistent, and perhaps increasing slightly, is the number of room additions in our area. Because of the economy, more people are expanding their current living areas instead of building or moving.

The Building Department operates under a set of CODES designed to protect everyone in the community. These codes legislate what may be built where and how. Codes are established by both state and local governments and are always available for inspection at the Village Hall. Primarily, the Building Department must approve all building plans and work being done in our community before, during and after construction.

All structural and some nonstructural work on your dwelling requires a building PERMIT. A great advantage of getting a permit is that it alerts the Village to your construction, which in turn brings you the services of the building inspector. The inspector approves each phase of the construction process making sure the work is being done safely and properly.

### Some areas where permits are required include:

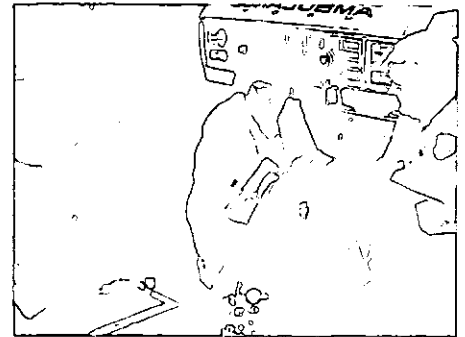
- Building or installing:** Patio; Deck; Chimney; Fireplace; Garage; Heating or Air Conditioning; Swimming Pool; Storage Shed; Fences;
- Adding or changing:** Rooms; Windows; Plumbing; Electrical Systems; Furnace; Garage; Driveways;
- Replacing or repairing:** Roof; Porches; Exterior Wall Coverings.

Do not permit anyone to do construction work on your property unless you see a permit from the municipality for the specific work he is employed to do. Make the most of the Building Department's inspection service. It's there for your protection. A list of permit fees are available at the Village Hall.

The property owner is ultimately responsible for getting permits. If the contractor fails to get one, it's up to you. Rather than take chances, call the Village Hall to be sure.

## GIFT TO PARAMEDICS

In May the Welcome Wagon Club of Bloomingdale presented a check for \$800 to the Bloomingdale Paramedics. Lt. John Fernald, Bloomingdale's Paramedic Coordinator, shows Janet Holhouser, Civic Chairperson and Sandy Diaz, Ways and Means Chairperson some equip-



ment purchased. Splint kits, cervical collars and an oxygen control head are among these.

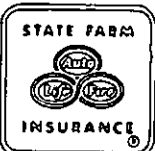
Summer fun is in store for members of the Welcome Wagon Club of Bloomingdale. Summer activities include Mom & Kids Outings to Pirates Cove, Blackwell Forest Preserve and Cosby Park. Men's & Women's Golf Outings are planned and a Couples' Barbecue in August.

The Welcome Wagon Club offers a variety of activities, including civic and recreational, for Bloomingdale women and their families. Anyone interested in more information can contact Carol at 529-3409.

**"Compare with me...  
Before you pay your next  
Auto or Homeowners Premium"**


**LARRY BEEMAN**  
**529-0114**

STATE FARM



INSURANCE

107 S. Bloomingdale Rd.  
Bloomingdale, IL  
60108



State Farm Insurance Companies  
Home Offices: Bloomington, IL



# K. of C.

by  
Paul Greening

"Atsa Nice" was the unanimous response of those attending the second annual spaghetti dinner held on April 17th at Resurrection Parish Hall. Included with the dinner were several auctions of merchandise contributed by local merchants. We are grateful to them and encourage your support of their business.

Funds raised by the dinner and other activities conducted throughout the year are used to support such organizations as the Teen Club, the Boy Scouts, and other charitable activities.

"We took home all the marbles," said Deputy Grand Knight Jim Lotarski. He was referring to the first place finish of the Thomas Merton Team in the Wheaton K of C Bowling League. Team members included Capt. Jim Lotarski, Ken Kern, Ralph Mosner, Vince Gnoffo, Wally

Zerbenski and Don Lively. The three foot permanent trophy will be kept at Council Headquarters.

More than 30 couples attended a 50's-60's Dance held at Resurrection on May 22. A live band added to the bobby-sox atmosphere and all who attended enjoyed recalling the "good old days."

Thomas Merton Council wishes to welcome Father Henry Slade as new pastor at St. Isidore's Church. Father Slade formerly was an associate pastor at St. Matthew's Church in neighboring Glendale Heights.

We encourage all Catholic men to join our organization. As you can see we have a lot of activities for the families and also help others such as the Marklund Home in Bloomingdale with the annual Tootsie Drive. Please call Paul Greening at 894-7308 for further information.

## Park Happenings

*Splash! Splash! Sounds of Summer.* We are all geared up and ready go...

The pool opens June 12th for eleven weeks of summer fun. This year we will be having some special events at the pool, check the office window for events and dates and be prepared to join in. Swim lessons will be, as usual, in the mornings Monday thru Friday.

This year, we will be having 6 movies starting with the "Shaggy Dog" Saturday, June 19, at 10:00 A.M. followed by "Song of the South," "Oliver," "Trouble with Angels," "Uncle Sam Magoo," and "Jack and the Beanstalk." These movies are free and last approximately 90 minutes.

June 5th, kicked off registration for Summer programs. Classes begin the week of June 21, so you still have time to sign up. Day camp, gymnastics, crayons to charcoal art series, golf, dance, and exercise programs are just some of the summer line up. Check your Spring/Summer brochure for further information or call us at 529-3650.

So many things are happening this summer, and we hope you'll join us in the fun. Don't forget our biggest event... *Fireworks, July 4th*, in Circle Park. Activities get underway at 3:00 P.M. Special attraction this year is the U.S. Navy "Chuting Stars" Parachute Team. Why not stay at home this year and join us on the 4th of July!



## BLOOMINGDALE STATE BANK

**3 Convenient Locations**

**13 Drive-In Lanes**

**24 Hour Banking**

**"We have a daily interest in you"**



**BLOOMINGDALE STATE BANK**

114-118 East Lake Street • Bloomingdale, Illinois 60108

Phone 980-2200

**GLENDALE HEIGHTS BANKING CENTER**

310 East Army Trail Road

Glendale Heights, Illinois 60137

**SPRINGBROOK BANKING CENTER**

136 East Lake Street

Bloomington, Illinois 60108

**Member FDIC**

### CHEERLEADING CLINIC

Bloomington Bears Cheerleading Clinic will be held on June 12th at Medinah Park District from 1:00 - 2:00 P.M. The tryouts will be held at the same location the following day, June 13th from 1:00 to 4:00 P.M.

## SEPTEMBERFEST, 1982 FESTIVAL OF FINE ARTS

After many wonderful years, Dolores Lowe of the Bloomingdale Historical Society has resigned as chairperson of the Septemberfest. Her hard work and devotion to this activity has been greatly appreciated.

A Septemberfest Committee has been formed, consisting of representatives from different organizations in the community. This year, the committee has decided to raise the booth fees to \$15.00 for one space and \$20.00 for two spaces. There will also be a 10% fee charged on food concession booths which have a profit over \$200.00. Any money left over after budget will be donated to an organization or charity in the Village.

If there are any organizations in the Village who would like to participate this year, but have not been contacted as yet, please call Julie Tevenan at 893-8118.

Our meetings are held the second Tuesday of every month at the Village Hall at 7:30 p.m., and all residents are invited to attend.

## Football Registration

Registration for Football 1982 Season will be:

June 12 July 10  
at

American Heritage Bank  
261 E. Lake Street  
10:00 AM to 1:00 PM

The program is open to all boys ages eight through thirteen who reside in Bloomingdale, Roselle, Medinah and Itasca.

The Bloomingdale Athletic Club meets the second Tuesday of each month at 7:30 PM in the Bloomingdale Village Hall - Community Room. All interested parents are urged to attend. This way you find out, first hand, what will be happening this season with the football and cheerleading program. Please mark your calendars — we DO need your support. Anyone with questions call Sam D'Agostino, President at 529-8837.

## Words for Children from



### Bloomingdale Public Library

*Spring is here!* It's time to start thinking about exciting new things, and your vacation days. The 7th Annual Spring Reading Game will be starting June 7. This year we are "Entering Another World"... the time of the dinosaurs! We will have an End-of-Game and Award Presentation party on August 28 at the NEW LIBRARY. McDonald's Restaurant is so proud of your good reading achievements, they have given gifts for great readers... and promised a special guest for our party. Come in and sign up in June and be part of a fun Summer Reading Challenge!

Remember, too, you can ask for a PEN PAL from anywhere in the world. WATCH FOR GRAND OPENING NEWS AND SURPRISES FOR THE NEW LIBRARY.

## MUSEUM Children's Art Exhibit

Bloomingdale audiences will have a rare opportunity to view children's art from the People's Republic of China when an exhibition of forty-one works opens at the Bloomingdale Park District Museum, 108 S. Bloomingdale Rd. on Sat., July 31st, 1982. The exhibition, which was developed for circulation by the Smithsonian Institution Traveling Exhibition Service (SITES), explores the subject matter, technique and style of children's work from the Chinese cities of Shanghai and Nanking.



Exhibit hours for the duration of the show are **Tues. 2-5, Wed. 11-2, Thurs. 4-7 and Sat. 10-3**. The Museum is free. We would like to welcome all Bloomingdale and area residents to this special Smithsonian show. Please call the Park District office for any further information... phone 539-3650.

## "Dunk Your Favorite Politician"

July 4th at Westlake  
(Grounds in Back of Clubhouse)  
299 Edgewater

*Mayor Sam Tenuto has graciously accepted a stint in the Dunk Tank along with Bob Mundo, Director of Public Works, and most of the Trustees.*

*Bring your baseball arm and see how many politicians you can dunk!*

*While you are dunking your favorite politician you can also enjoy beer, brats, wine, hot dogs and pop.*

*...Adult and Kids' Games...*

*Flag Raising*

*Bike and Pet Parade Start at 10:00 A.M.*

*Dress Casual*

*But Be Sure To Wear A Smile!*

## TWO NEW OFFICERS

Randy Lee Sater, 23 years of age, and his wife Sandy live in Carol Stream. A graduate of Western Illinois University, Sater holds a Bachelor's Degree in Law Enforcement Administration. He worked with the Bloomingdale Police Department for a period of 15 weeks while an intern in Western's program in 1979.

Randy previously was the second in command at the Harper College Police Department where he served for two years. While with Harper, he attended Basic Police Recruit Training in Champaign, Illinois and was the recipient of the Irving H. Warren Award for excellence. Therefore he will not need to attend a police academy and is presently being trained by Field Officer Jeff Fritz. Randy will work with Officer Fritz until he becomes thoroughly familiar with Bloomingdale Police Department field procedures, after which he will be assigned to patrol duties.

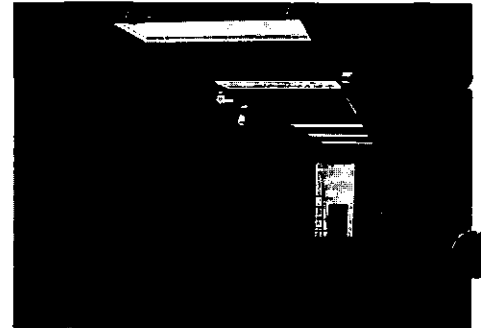
Scott Donald Stick, 30 years of age, and his wife Donna live in Schaumburg. Scott has earned an Associate Degree in Science from Harper College. He has served as a Special Reserve Police Officer with the Schaumburg Police Department and served with the U.S. Navy. Stick worked for Muncie Power Products in Des Plaines before joining the Bloomingdale Police Department.

He is attending the Chicago Police Department Academy for suburban police officers and will graduate on June 16th. Scott will then be trained by Field Training Officer John Crabb, (another Navy Man) until he is thoroughly competent to be added to the Bloomingdale Police Department patrol unit.

We welcome both these officers to our Police Department and wish them a long and prosperous career.

### BRUSHES FIRST, BOOKS NEXT

See how far the library has come in just one year! Construction workers are finishing up and the interior details are soon to be underway. The new building will hopefully be ready sometime in July.



### Area Physician Seeks Help Gathering Historical Information

Raymond Dieter, M.D., chairman of the Department of Surgery at the Glen Ellyn Clinic, S.C. and a member of the DuPage County Medical Society is researching the history of medicine in DuPage County for publication.

Very little has been written on medicine's beginnings in the county, the earliest physicians to practice here or when procedures were first performed.

If anyone has information, photographs, etc., please contact Dr. Dieter at the DuPage County Medical Society, 800 Roosevelt Rd., Building B, Rm. 300, Glen Ellyn, IL 60137.

### ARBOR DAY DONATION

The Bloomingdale Garden Club donated 150 five to seven foot trees to Central School in celebration of Arbor Day. The collection included red and white oak, locust, maple and plum trees. The trees are distributed one to a family for home planting.

The club's April meeting was held in Chicago and provided an opportunity to learn about miniature plant culture and terrariums. In May the Garden Club toured Lilacia Park in Lombard and held a plant exchange and picnic at Meacham Forest Preserve.

Meetings are held the third Wednesday of the month and new members are always welcome. Anyone interested call Gay at 894-9147.

# "WHAT DO YOU THINK?"

I am never quite so proud that I live in Bloomingdale until I read the ALMANAC. Since I am divorced and busy trying to make a living for my family, I am not as informed about the Village as I would like. Thanks for "catching me up." Could I suggest that somehow we be informed of needy people we can help within our area. I would like to contribute to my own community if I only knew who could use a little help.

Name withheld by request

MANY thanks for your words of praise and encouragement. We love to hear we're being effective. Okay residents, the ball is in your court. Let us know, perhaps through the churches and organizations, where a need exists. We'll pass along the information through the ALMANAC.

Editor

I would like to see the school grounds and Park District patrolled by police more often when people are using them for baseball games. Also I have noticed some beer drinking on the school grounds on weekends.

Name withheld by request

*As consumption or possession of alcoholic beverages upon Park District property is prohibited, Bloomingdale Police Officers do enforce such violations when they are detected. However, since the officers are not present when all such incidents occur, I request that you notify the police department when you encounter such activity and report the violation. I have also notified the Park District to alert their security members to this problem.*

Patrick J. McMahon  
Chief of Police

I would like to see a traffic light put up at the Bloomingdale Rd. and Edgewater intersection. Pulling out on to Bloomingdale Rd. is very dangerous, especially making a left turn. Let's get a light there now before someone is killed.

Name withheld by request

*We have requested the County arrange for traffic counts at this intersection so that the need for a traffic signal could be established.*

Daniel C. Wennerholm  
Village Engineer

I was amused by the December, 1981 issue stating Cable TV hookups may

begin in September, 1982. This contradicts your prediction in the March, 1981 issue stating cable TV "will be ready to go in July, 1981." Can you explain the 15 month difference? When will cable be ready?

L. Linhart  
209 Oakwood Lane

*In the March, 1981 ALMANAC, the Cable TV article states "Hopefully, we will be ready to go in July, 1981." In the interest of providing a brief update, perhaps some clarity was lost. The article you referenced was intended to discuss selection of a Cable TV company to pursue direct negotiations for a Franchise Agreement. It also stated it would take approximately two years of construction to lay all the cable.*

*Anticipated at that time was a six month period to develop the Franchise Agreement, and it has taken nine months. We are now in negotiations and although proceeding as rapidly as possible, it is not our intention to set an arbitrary time limit as a deadline. We prefer to learn all aspects possible prior to execution of an agreement.*

Robert F. Reeves  
Village Administrator

## OPINION FEATURE

Please tell us if you have any suggestions or questions for your Village. What you think is important to us. Write your thoughts below, then detach and mail to "What Do You Think," Village of Bloomingdale, 201 S. Bloomingdale Rd., Bloomingdale, IL 60108. No unsigned submissions will be considered. The ALMANAC reserves the right to reprint all or part of the submission depending upon length. We do, however, try to retain the gist of the query.

My thoughts are as follows: \_\_\_\_\_  
\_\_\_\_\_  
\_\_\_\_\_  
\_\_\_\_\_  
\_\_\_\_\_  
\_\_\_\_\_

Name \_\_\_\_\_ Address \_\_\_\_\_

Print my name: Yes \_\_\_\_\_ No \_\_\_\_\_

# BLOOMINGDALE BUSINESS DIRECTORY



Village Of  
Bloomingdale  
201 S. BLOOMINGDALE ROAD  
BLOOMINGDALE, ILLINOIS 60108

BULK RATE  
US POSTAGE  
PAID  
Bloomingdale, Ill.  
60108  
Permit No. 16

POSTAL PATRON, LOCAL  
BLOOMINGDALE, ILLINOIS 60108

## ACCOUNTANTS

Donald McLean & Co., Chtd.  
Certified Public Accountant  
181 S. Bloomingdale Road  
980-7600

## ACCOUNTANTS

Schoen, Coyle & Co.  
Certified Public Accountants  
107 South Bloomingdale Road  
980-4121

## ATTORNEYS AT LAW

Knechtel, Valentino, Demeur & Dallas  
130 N. Bloomingdale Rd., Suite 104  
893-9132  
Chicago Off: 20 N. Wacker Dr. 726-5342

## CARPET CLEANER

Sansone Carpet, Drapery  
and Upholstery Cleaners  
312 Edgewater Drive  
893-4010

## CHIROPRACTOR

Bloomingdale Chiropractic Clinic  
Dr. James Dean  
181 S. Bloomingdale Rd.  
980-5460

## CHIROPRACTOR

Keller Chiropractic Clinic  
220 E. Lake Street  
980-6555 Hours by Appointment  
*Total Health Care Facility*

## DENTIST

Robert Meyers, D.D.S.  
201 E. Army Trail Rd.  
893-4650  
Office Hours by Appointment

## DENTIST

James Paradowski, D.D.S.  
255 E. Lake Street  
529-7130  
Office Hours by Appointment

## ELECTRICAL CONTRACTOR

A.F. Dee Electrical Contractors, Inc.  
252 Cardinal Drive 893-5616  
Residential • Commercial • Industrial  
Energy Conservation Programs

## ELECTRICAL CONTRACTOR

Otto Electric, Inc.  
132 W. Lake Street  
980-9085  
Residential • Commercial • Industrial

## GENERAL MERCHANDISE

Econ-O-Mart  
110 Ridge Road  
529-5490  
*You're invited to browse and save.*

## HARDWARE

Warnimont's True Value Hardware  
23 W. 745 Lake Street  
529-3030  
Comm. Edison Bulb Service

## MAGIC - GIFTS - NOVELTIES

Magique  
159 West Lake Street  
980-4980  
*Good deals in laughs and smiles*

## NURSING HOME

Applewood Manor Convalescent Center  
275 Army Trail Road  
893-9616  
*"Let our family help yours"*

**KEEP YOUR TAX DOLLARS  
WORKING FOR YOU!  
BUY IN BLOOMINGDALE!**

## NURSING HOME

Bloomingdale Pavilion Nursing Home  
311 Edgewater Drive 894-7400  
Retirement • Convalescence • Restorative  
Nursing • Rehabilitation • Intensive Care

## OFFICE SPACE

Clover-Leaf Executive Centers  
400 W. Lake Street and  
201 E. Army Trail Road  
529-6000 & 893-1000

## PHARMACY

Bloomingdale Pharmacy  
Bloomingdale & Schick Roads  
980-9198 or 980-9199  
*Free Prescription Delivery*

## PRINTING

Budde's Print Shop  
159 West Lake Street  
894-4009  
*Let Us Make You Look Good In Print*

## PROFESSIONAL PHOTOGRAPHY

Portraits • Model • Family • Advertising  
Studio • Home • Outdoors  
*Inexpensive, Prompt, Personal Service*  
980-1316 Evenings & Weekends

## SECRETARIAL SERVICE

Western DuPage Secretarial Service Inc.  
109 Fairfield Way — Suite 106  
893-9340  
Exec. Typing & Word Processing Service

## VETERINARIANS

Bloomingdale Animal Hospital  
Drs. Borman, Olson & Page  
290 Glen Ellyn Road  
893-4330