

The Village
 Almanac
 OFFICIAL PUBLICATION OF THE
 VILLAGE OF BLOOMINGDALE

Volume 9, Number 5

October, 1984

BLOOMINGDALE PARK DISTRICT 20 Years of Activity

The Bloomingdale Park District, an important contributor to the quality of life, culture and recreation here in Bloomingdale, very quietly marked its 20th anniversary this year. Much like the public library, the park district came about because a core of people worked very hard to put it together.

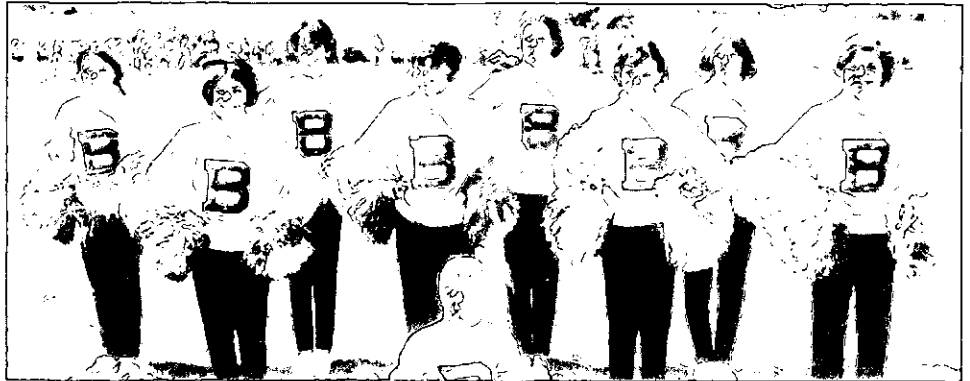
Present park district commissioner, Ralph Johnston, was a Village trustee back then. He says the need for a park district was recognized due to the expansion of our Village, as well as that of neighboring villages. The Village officials felt they didn't have the resources for the recreational and maintenance aspects of a park district, nor did they want the responsibility at that point. So in 1963 they passed an ordinance creating a Park Board which started the ball rolling.

On May 2, 1964 a referendum was passed 104 - 10 to establish a park district and elect the following as Park District Commissioners: Joe Slater, president; Jack Sheelor (who stayed on the Board for twelve years), vice president; Ron Richards; Don Rottenberk; Margaret Johnson. The boundaries of the park district are the same as those of school district 13, taking in part of Roselle and a small piece of Medinah.

For the first couple years the park district existed largely for athletics.



1968 or 1969 - Recognize anyone?



Circle Ave. Park (where the Rec Center presently stands) had a football field and baseball diamond. The teams also used the fields at Central School. One of the teams' baseball coaches was Ted Mullins. At the end of a very successful season he organized an all-star weekend complete with refreshments. The park district commissioners were so impressed with his organizational talents they asked him to serve as park district director.

In 1965 Mullins accepted, and while holding down a full-time job, proceeded to organize and develop the district's programs. During his four years as director Mullins guided the

growth of the park district from an idea to an award-winning system. In 1965 about 150 youngsters were registered in the limited activities. By 1969 more than 400 children were participating in more than 19 sports and organized events. Shortly before Mullins' resignation in 1969 the Bloomingdale Park District received top rating in statewide competition for the best all-around program.

Mullins started with five coaches for the athletic activities and ended up with 45. "They were all great," he remembers. "It would be hard to single out individuals; it was a group effort for the benefit of the kids."

Continued on Page 6

Samuel J. Tenuto
VILLAGE PRESIDENT
Marie E. Tayfel
VILLAGE CLERK
Robert F. Reeves
VILLAGE ADMINISTRATOR

TRUSTEES

Biff Behr
Finance & Budget,
Finance Commission, Park District
DuPage Water Commission
Walter Cropper III
Police, Health & Safety, E.S.D.A.,
Police Pension Board
Board of Fire & Police Commissioners
RTA Services
Joanne Hildt
Old Town/Public Relations
Old Town Commission,
Public Relations Committee,
Chamber of Commerce,
Community Development Commission
Suburban O'Hare Commission
William Horvath
Public Works,
Regionalization Committee
Robert Iden
Plan Commission, Architectural Review,
Comprehensive Planning Committee
Cable TV
Sebastian J. "Buzz" Puccio
Zoning, Building & Street Maintenance
Library Board

COMMUNITY BULLETIN BOARD

Civic groups and other organizations may have their announcements of community interest events shown on Cable TV free of charge. The "Community Bulletin Board" runs 24 hours on a dedicated channel. You may furnish the necessary information to the Metrovision headquarters on Lake Street directly or call them at 894-4949.

WARNING

It has been brought to the attention of the Bloomingdale Fire Protection District No. 1, that there is solicitation in person and by telephone by persons claiming to represent one of the many fire or fire-related organizations located throughout the State of Illinois. These persons seek contributions to various publications, funds or organizations with the promise of free advertisement in one of their publications. Therefore, we urge you to check with this Department before making contributions or volunteering information about yourself and residence

VILLAGE BOARD & COMMISSION MEETINGS

The public is encouraged to attend all Board & Commission meetings.

REGULAR MEETINGS OF THE VILLAGE BOARD

2nd and 4th Monday of every Month
7:30 P.M. — Village Hall

COMMITTEE OF THE WHOLE

2nd & 4th Mondays of every month
7:30 P.M. — Village Hall

PLAN COMMISSION

1st and 3rd Tuesday of every Month
8:00 P.M. — Village Hall

BOARD OF FIRE AND POLICE COMMISSIONERS

3rd Thursday of Every Month
7:00 P.M. — Village Hall

POLICE PENSION BOARD

Quarterly beginning in January
2nd Monday,
7:00 P.M. — Village Hall

FINANCE COMMISSION

1st and 3rd Wednesday of every Month
7:30 P.M. — Village Hall

OLD TOWN COMMISSION

3rd Wednesday of every Month
8:00 P.M. — Village Hall

LIBRARY BOARD OF DIRECTORS

3rd Wednesday of every Month
7:30 P.M. — Library

CHAMBER OF COMMERCE

Board of Directors Meeting
1st Thursday of every month
8:00 A.M. — Indian Lakes -
Tamarack Room

NOTICE

**Due to the Christmas Mail Rush
THE DEADLINE FOR THE
DECEMBER ISSUE
IS NOVEMBER 20**

FROM ONE BOROUGH TO ANOTHER

Thanks to Bill and Karen Parry, the Village of Bloomingdale is the recipient of good will wishes sent personally by the Mayor of the Borough of Delyn, Wales. The couple honeymooned in Wales this summer and were honored with an invitation to have cocktails in the Mayor's Parlour. Selwyn Roberts, Mayor of Delyn, sent a plaque to our Village via the Parrys with the Delyn crest as a memento of the occasion.

IN RECOGNITION

Joseph DeVincent, a 25-year old Roselle Fire Department volunteer was honored on September 24 by the Village Board for his heroics earlier this summer. DeVincent, who is employed as manager at the Bloomingdale Mobil Station saved the life of an Elgin man trapped in a burning auto at the Bloomingdale Road/Lake Street intersection.



DeVincent is congratulated by Mayor Tenuto

Unable to free the man who lay unconscious following an accident, DeVincent raced back to the station for fire extinguishers and put the fire out before the Bloomingdale Fire Department arrived to free the victim.

VILLAGE ALMANAC
is published bi-monthly by
The Public Relations
Committee of the
Village of Bloomingdale.
Editor,
Mary Ellen Johnson - 351-1503
Production Assistant
Don Lively
Address all correspondence to:
Village of Bloomingdale
Public Relations Committee
201 S. Bloomingdale Road
Bloomingdale, IL 60108
Phone: 893-7000



THE MAYOR'S DIRECT LINE

PROPERTY TAXES ASSESSED IN 1983 / PAID IN 1984 Village/Library

The property tax bills received recently in Bloomingdale reflect a decrease in the Village/Library tax rate from \$.7442 to \$.7122 which resulted in a decrease in the dollars paid for a typical single-family residential home to the Village/Library by about \$6.00 to \$8.00.

The Village portion of this tax rate was reduced from \$.4789 to \$.4345 which means that the dollars paid to the Village itself on a typical single-family unit decreased by a range of \$10.000 and more. The Library portion of the tax rate increased from \$.2653 to \$.2777.

We take pride in the further decrease in the Village portion of the tax rate. Next year's Village portion of the tax rate will be about \$.4000 which will again reduce the taxes paid on a typical single-family unit by about \$6.00 to \$8.00.

Although the Library and Village are separate and independent governing bodies, both are combined on your property tax bill, in one total.

The 1983 Village tax rate would have increased substan-

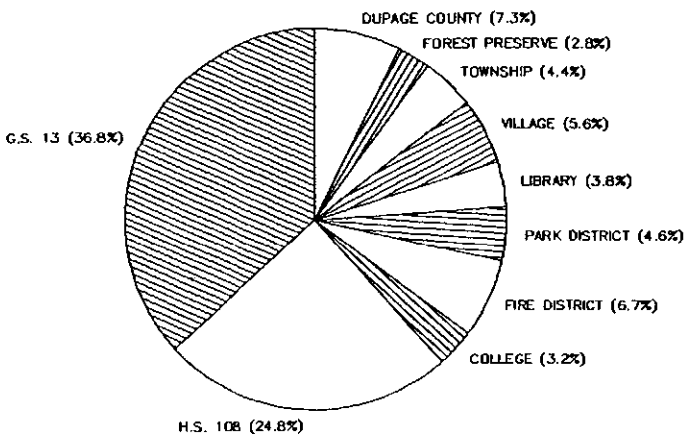
tially if it were not for the Village Board's abatement (reduction) of \$552,897.50 in property taxes from your tax bill.

Since 1979, the Village Board has abated taxes amounting to \$98,700.00 payable in 1980; \$99,800.00 payable in 1981; \$138,000.00 payable in 1982; \$462,452.00 payable in 1983; and the amount stated above of \$552,897.50 in 1984. We intend to continue to implement fiscal policies that will further decrease the burden on local property taxes.

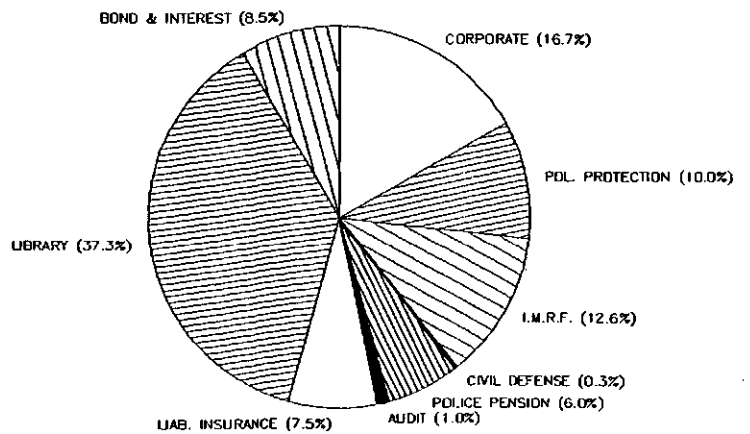
The tax rate of .4345 for the Village portion only is one of the lowest in DuPage County; and comprises only 5.6% of your total property tax bill. This compares favorably with other local taxing bodies shown on the tax bill. (See Pie Chart titled "Typical Residential Tax Bill").

The other pie chart titled "Village Property Tax Levy" details the percentage breakdown of the portion of the tax bill titled "Village of Bloomingdale". As can be observed, the major portions of the funds collected are spent on operating the Library and pension and insurance funds.

TYPICAL RESIDENTIAL TAX BILL
1984



VILLAGE PROPERTY TAX LEVY
1984



O'HARE NOISE CONTINUES

The following letter was received as an opinion feature during the past month:

In light of the happening at O'Hare i.e. the expansion of O'Hare West and the increase of air traffic and noise over our Village with the threat of adding cargo planes in the near future, it seems that there has been little, if any impact on the Village as a community to prevent this from happening.

There is strength in numbers. Yet a response of only 11 people out of 12,000 to the Hotline number (686-2377) does not reflect the many concerned citizens who have not realized the need for immediate action. We urge the Village administrators to find an effective way of making an impact on the people of Bloomingdale.

Diane LaSota
250 E. Schick Road
Roberta DiBasilio
242 E. Schick Road

This is a point well taken. It is the contention of Village officials and many, many residents that the frequency of aircraft and the attendant aircraft noise has *increased* over Bloomingdale substantially. This increase has principally occurred during the past nine months, which is coincidental to the so called "tower order" test period in early 1984.

At this point in time we, as residents of a western suburb some 15 miles away from the airport, do not need to accept excess noise from air-

planes as a way of life.

The traffic from 10 P.M. to 6 A.M. will steadily increase if no steps are taken to prevent it. The airport intends to push as much traffic as they can over the "low-populated" western suburbs. Runway 27R, which is to be extended to accommodate the even louder cargo planes, brings air traffic directly over Bloomingdale.

All the area State and Federal legislators have been apprised of our air traffic noise problem and are being urged to voice their opposition. And while their support is desirable, it is still up to residents to speak up, to call the Hotline *every time* the planes are roaring overhead. The Noise Abatement Office can hardly take 11 calls (this is the number of calls received from Bloomingdale to the office as recorded during August) in one month seriously. But a deluge of calls from Bloomingdale will illustrate to them there is indeed a problem with excessive noise here.

If the line is busy when you call and you don't have the time to keep calling back - jot down the time. At some point later that day or the next, call in to complain about the specific time the noise was excessive.

Sitting back will not resolve the problem; it is not going to go away. Rather, it will ensure the problem will become worse in the near future. **There is strength in numbers; use the hotline number!**

PUPPET PURCHASE

Those in attendance at Septemberfest were introduced to a cast of characters who are dedicated to helping the Bloomingdale Police Department keep our youngsters safe and healthy.

The cast is really a cast of puppets recently purchased by the department as an aid in programs designed for the youngsters. Funds toward the purchase were donated by the Bloomingdale Women's Club, Lions Club, Cub Scout Pack 57 and the DuJardin P.T.O.

Programs for the preschool and primary grades include Stranger Danger, Traffic and Bicycle Safety, Emergency - What to Do and Shoplifting. One of the characters who act out situations and sing to get the message across is Officer Ollie, dressed in a Bloomingdale uniform.



Officer Ollie, assisted by Sgt. Jeff Fritz, waves from one of the departments new squads.

For the fifth grade and older students, programs include Substance Abuse - drug, alcohol and tobacco. Among the characters for these programs are Zachary Daiquiri, Smokey Hackancough plus a talking heart, stomach, brain and liver.

The puppets perform and impart their wisdom with some help from Det. Scott Stick, Officer Paul Deibel and Sgt. Jeff Fritz. The puppets will be used in the schools and with youth organizations as an extension of the Police Department's community relations program.

686-2377
O'HARE NOISE COMPLAINT HOTLINE

EMERGENCY HELP FOR HANDICAPPED

Telephone equipment, designed to make it easier for residents of the Bloomingdale Fire Protection District No. 1, who have hearing or speech impairments to place emergency telephone calls, has been placed at the Bloomingdale Fire Department, 108 West Washington Street, by the Illinois Department of Rehabilitation Services.

According to Lawrence H. Koehn, Chief, the equipment — a tele-communications device for the deaf — will make it possible for those who cannot use the ordinary telephone to call for help when they need police, firefighting, medical or ambulance assistance. "In order to have access to the TDD receiving unit, a handicapped person must install a home unit for sending and receiving messages," he explained.

"We anticipate," he said, "that, with the installation of the TDD equipment, nearly all households where there are handicapped persons will install home units during the next two or three years."

Robert W. Granzier, Director of the Illinois Department of Rehabilitation Services, said that the Bloomingdale Fire Protection District No. 1 unit is one of 297 TDD's that are being distributed by the Department to local public safety answering points throughout the state.



"We've been peddlin' since 1958"

*The Most Unique Family Owned
and Operated Business in Town.*

Econ-O-Mart

110 SOUTH RIDGE
BLOOMINGDALE, ILLINOIS 60108

529-5490

HOURS:

Mon., Tues., Thurs. 9-6 Sat. 9-6 - Sun. 12-6
Fri. 9-9 Closed Wed.

Celebrating Our 26th Year of Service
to Bloomingdale

1984/85 TREE PLANTING PROGRAM

The Village Board has again allocated funds for this very successful program which was started in 1982. The program provides trees including planting at a 50/50 cost sharing with the Village. This year, we are making a few changes and improvements. Instead of fall planting, we will have the trees installed very early next Spring. Also, this year we will be expanding the program to allow for trees to be planted in front yards.

This Winter, after all interested residents have signed up, we will take competitive bids and will then have the exact prices. We then will contact each participant with the appropriate cost and request payment.

The following are the guidelines of the program:

1. Since the budget is limited, the program will be on a first come, first served basis. Requests should be submitted by November 15, 1984. No money is needed at this time. Bills will be sent in early 1985.
2. Trees will be 2½" caliper, unless stated otherwise.
3. The Village reserves the right to disapprove requests based on utility conflicts, safety, or improper spacing.
4. Each parcel will be limited to two (2) trees. Corner lots will be allowed (4) trees.
5. Participants will be given the opportunity to mark the location of the planting desired, but the Village retains the right to change if necessary.
6. We anticipate the cost of the trees to be between \$100.00 and \$140.00 each, with the Village paying half of that amount.
7. Trees will be guaranteed for one year. Participants are responsible for all watering and feeding which will be described in instructions furnished by the landscape contractor.

TREE PLANTING PROGRAM REQUEST FORM

Name: _____ DATE: _____

ADDRESS: _____ PHONE: _____

PROPERTY ADDRESS: _____

INDICATE NUMBER OF EACH TYPE DESIRED:

PARKWAY

- Acer Rubrum "Red Sunset" Norway Maple "Crimson King"
Maple

YARD ONLY

- Skyline Honey Locust Clump River Birch
 Crabapple - Hopa Var. (3 Stems 10-12' high)
 European Mt. Ash Acer Rubrum "Red Sunset"
Maple
 Norway Maple "Crimson King"
(Dark Red Leaves All Year)

Deliver or send to Department of Public Works and Engineering, Village Hall, 201 South Bloomingdale Road, Bloomingdale, IL 60108.



BLOOMINGDALE PARK DISTRICT

20 Years of Activity

BAND INSTRUCTORS SOUGHT

Continued from Page 1

Several names did come up though, among them:

Don Rottenberk who was instrumental in the formation of the park district and involved in many of the activities; *Stan Wosilus* a professional photographer who provided team pictures and spent his Saturday afternoons running movies for the youngsters; the late *Ann Zukauskas*, volunteer swim instructor who "must have taught every kid in town back then how to swim." At the time youngsters were bussed to either St. Petronille in Glen Ellyn or to Flick Reedy pool in Elk Grove; *Howard Sterrett*, then director of physical education at Queen Bee School, who was very involved in baseball and other programs; *Al Meid*, whose generosity to the park district was unmatched.

Mullins tells about Meid giving him 50 tickets to the Northwestern/Purdue game, providing the bus to take the kids and coaches there and then feeding everyone when they returned. Meid owned an "old time country restaurant and tavern" in the building we more recently knew as the Bigger Jigger. All the other businesses existing then in town also donated to the park district events, among them Warnimonts and Economart.

Volleyball, golf, basketball, archery, field trips - all of these were programs begun during Mullins' tenure. Brendan O'Dea and Dan Mazanec continued the quality in their terms as program directors. In 1974 the park district hired Tom Lovern as a full-time director. This was also the year the Rec Center and pool at 172 Circle was built. Previous to this the present Park District Museum served as the district office; it had been purchased from the township.

Today the district has seven parks: Circle on Fairfield Way; Lakeview on Broker Road; Sunnyside at Byron and Glen Ellyn Road; Indian Lakes at Thrasher & Bobowhite; Tompkins on Edgewater, leased from school district 13; Westlake behind the Westlake Townhome clubhouse and Seasons Four in Roselle.

In 1968, 800 park district brochures were hand delivered door-to-door. The 1984 Fall/Winter brochure was mailed to 5125 homes. Over the years various programs were added to the schedule: gymnastics, exercises, pre-school program, and craft classes, to name a few.

Three years ago the park district opened the doors of its museum, 108 S. Bloomingdale Road, with traveling exhibits and workshops. Today the park district employs an administrative staff of eight, plus individuals who conduct classes and/or workshops.

Twenty years is not very long in a town 150 years old, but the park district has come a long way in that time. And we owe a debt of gratitude to those people who had the vision and spent the time in those early years to begin the Bloomingdale Park District.


Band students in Bloomingdale schools are in need of private instructors, especially in the brass, percussion and woodwind sections. Rodger Himmel, School District 13 band director, said many students take private lessons after school and on weekends, in addition to school classes.

Qualified instructors living in the immediate area and who would like to take private students may send background information to Himmel at Westfield School, 149 Fairfield Way, Bloomingdale.

MAILBOX REMINDER

In previous issues, the Public Works Department provided sketches of mailbox installations. Basically, the street side of the mailbox itself must be no closer than 8 inches from the curb or edge of pavement.

With the winter snows not too far away, residents should now check their mailbox installations for proper location and to make sure that they are securely mounted and fastened. We cannot be responsible for damage if these guidelines are not followed.

 <p>OLD TOWN[®] BLOOMINGDALE</p> <p>A Turn of the Century Shopping Experience.</p> <p>Lake Street (Hwy. 20) at Bloomingdale/Roselle Rd. Bloomingdale, IL (312) 980-0327</p>	<p>Hours:</p> <p>Tuesday - Saturday 10-5 Sundays 12-5 Thursday til 8:30pm</p>
--	---

SIDEWALK SUPERINTENDENT

by
JIM KRAUTSTRUNK
DIRECTOR OF BUILDING & ZONING

OPENED RECENTLY

- Borg Jewelers** - 158A East Street - Springbrook Shopping Center
- Chicago Tribune Office** - 160E South Bloomingdale Road - Old Towne Square
- Cody's Dining Room** - 109 South Third Street - Old Town Area
- Hawaiian Golden Tan** - 156P South Bloomingdale Road, Old Towne Square
- Herman's Sporting Goods** - 369 West Army Trail Road - Courtyard Shopping Center
- Medical Office** - 245 South Gary Avenue
- Mishka's Old Towne Liquors** - 156U South Bloomingdale Rd. - Old Towne Square
- Urgent Care Center** - 245 South Gary Avenue

UNDER CONSTRUCTION

- Advanced Systems Applications Inc.**, Building No. 2 with an Atrium, 244 Knollwood Drive - Computer Application Company
- Bloomingdale Alliance Church** - 264 South Glen Ellyn Road
- Card Party** - 203 Stratford Square Mall - Cards & Gifts
- Connies/Portillo's** - 134 East Lake Street - Pizza-Hot Dog Restaurant - Turn of the Century Chicago Street Scene Theme
- Contempo Casuals** - 608 Stratford Square Mall
- Sporty's Hot Dogs** - 369-25 West Army Trail Road - Courtyard Shopping Center

SOON TO BE STARTED

- Mainstreet** - 6 Stratford Square Mall - Department Store
- Pizza Hut** - 430 West Army Trail Road
- Springbrook Villas** - Schick Road and Ridge Avenue - Townhomes

ON THE DRAWING BOARD

- Evergreen Farms** - 139 West Lake Street - Old Town Area - Commercial Office Building Complex
- Off-Price Center** - 304 West Army Trail Road
Marshalls Department Store - Plus Various Shops & Stores
- Red Lobster** - 391 West Army Trail Road - Remodeling

DALE EVANS APPEARS FOR MARKLUND HOME



Marklund Children's Home is rounding up old friends and new to join in celebrating their 30th anniversary of loving care for profoundly handicapped children.

The "30th Anniversary Round-up" will take place on November 2 at the Indian Lakes Resort with very special guest Dale Evans. A \$30 ticket donation will enable you to enjoy a scrumptious western buffet dinner, a delightful program by Miss Evans and the chance to continue the lifeline services of the Marklund Home for years to come.

For further information call Dottie at 529-2871. Ticket order forms will be sent on request.

On the afternoon of November 2, the staff at Marklund will have a prayer dedication of their new parent visiting room and ambulance entrance way. The addition at Marklund was made possible due to donations from the local Knights of Columbus chapters and the 5th District Illinois Federation of Women's Clubs.




Mayor Sam Tenuto presents John Blaney, chairman of the board and founder of A.S.A., with a key to the Village at the A.S.A. building ribbon cutting August 11.

**"Compare with me...
Before you pay your next
Auto or Homeowners Premium"**

LARRY BEEMAN
529-0114


STATE FARM
INSURANCE

107 S. Bloomingdale Rd.
Bloomingdale, IL
60908



State Farm Insurance Companies
Home Offices: Bloomington, Illinois

**FREE ROAD
ATLAS**



State Farm
Road Atlas

STOP IN WITH YOUR PRESENT POLICY
PICK UP YOUR COMPUTER QUOTATION AND FREE ATLAS.

We're New in the Neighborhood

We'd like to meet you, and have you meet us

Come to our Open House

Saturday, November 3

10 a.m. to 3 p.m.

Meet Our Physicians:

Dentistry

Tom J. Miller, D.D.S.

Internal Medicine

Lawrence Schouten, M.D.

Obstetrics & Gynecology

John Heitzler, M.D.

Michael Hussey, M.D.

Salvatore Reda, M.D.

Kenneth Siegel, M.D.

Pediatrics

S. I. Fejer, M.D.

Urgent Care Center

Rex Blumhagen, M.D.,
medical director

• **Free medical screenings**

• **Educational materials
to take home**

• **Refreshments**

Stratford _____

Medical Offices

Urgent Care Center

245 South Gary, Bloomingdale
at the Scott Drive entrance to Stratford Square

893-9600

LANDMARK PROGRESSING

Since 1983 plans have been in the works for the Founders' Landmark Gazebo to commemorate the sesquicentennial year of the founding of the Village by the Meacham family. The gazebo will be located in a park setting on the old library site at the corner of Bloomingdale and Fairfield Way.

Thanks to the dedicated work of the Landmark committee members and the many contributions of residents and local businesses the project is moving forward, with all architectural and construction drawings completed.

The estimated development cost to completion of Founders' Park is \$75,000. Committed contributions through June, 1985 are approximately \$54,000 which is sufficient to fund the entire project, less the cost of the paver walkway system. The cost of the paver system is approximately \$22,000 and covers the installation of some 11,000 brick pavers.

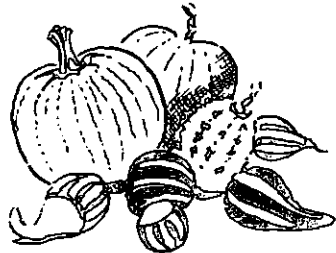
Ground breaking and construction is scheduled to commence in the spring of 1985. A scaled model of the Landmark Gazebo, constructed by Landmark committee member John Orlksen, was at the committee's booth on Septemberfest. Contributions to Founders Park that day came to \$700. The model is now on display at the Village Hall.

Since our last update the following donations for Founders' Park have been received:

DiPaolo Company	\$500	Ethel Williamson	\$50
Pathway Financial	\$25	Raymond & Marie Friscia	\$25
Raymond & Verona Stark	\$500	John & Lorraine Orlksen	\$15
in memory of their son Lt. Richard C. Stark, B.F.D.		Barney & Judith Pelant	\$25
H.L. Latt	\$200	Dennis & Mary Lee McConnell	\$10
Mary Freeman... (Donation of original artwork and 100 Donation Appreciation Certificates)		David Roth	\$5
Jim Mikes... (Donation of estimate of cost for construction material)		Edward Walendy	\$5
Joe Stella... (Donation of estimate of all construction costs)		Don Zdroik	\$5
Ross Palermo... (Donation of estimate of landscape costs)		Alfred Biller	\$5
John Orlksen... (Donation of 3 dimensional model of gazebo)		Dave Ditallo	\$5
Bloomingdale Historical Society	\$500	Edward Levato	\$5
		Mr. & Mrs. Dennis Hyde	\$5
		Joe Draghi	\$5
		Vivian Krotz	\$5
		Ron Howe	\$5
		Lawrence Baldwin	\$5
		Misc. Donations made at Septemberfest	\$20

In addition, interest added to the account since the last update comes to \$370.60. This brings the total in the fund to \$17,762.68.

All contributions are tax deductible and all contributors will receive a certificate acknowledging their generosity. Contributions may be made either in person or by mail to the Village Hall. Checks should be made out to "Landmark Gazebo Fund." Contact the Mayor's Office for further information.

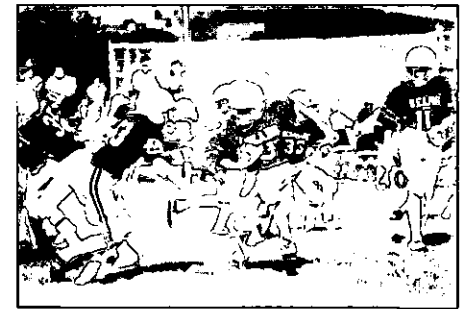


FOURTH ANNUAL BOWL GAMES

A good time was had by all as the Bloomingdale Athletic Club welcomed over 64 football teams from Chicago and the suburbs to Circle Park August 25 & 26. An estimated 5000 to 6000 parents and spectators filled the two football fields simultaneously from 8 A.M. to 8 P.M.

The fourth annual Bowl games were a great success due to the support of over 50 volunteer parents who devoted their time and energy for the benefit of the football and cheerleading program. These preseason games give the coaches a chance to see their teams in action before the season begins.

On Saturday, special guest Jack Brickhouse visited with the teams and voiced his support of the B.A.C. program. Before his illustrious career as a Hall of Fame Sports-caster for the Chicago Cubs, Brickhouse was the announcer for the Chicago Bears for over 24 years.



Running back Joey Champagne takes a handoff from Quarterback Bill Wolff and runs for a touchdown against the 105 lb. Lombard team. Bloomingdale Bears won 13-7.

Proceeds raised from the two-day event go to purchase new equipment for the football players and cheerleaders.

Mark your calendar
Bloomingdale Women's Club's
PASSPORT TO FASHION
April 20, 1985
Fashions by:
Marshall Field & Co.

NEW BUSINESSES IN BLOOMINGDALE

Cody's Dining Room

Old Town's Cody's Hotel at 109 Third Street has a new restaurant called Cody's Dining Room. Mr. and Mrs. Ram Lombardi, Bloomingdale residents, bring over 20 years of restaurant experience with them to this eating establishment. They felt the Old Town area was a key location because of its drawing power.

The lunch and dinner menus offer a wide variety of dishes. The Lombardis take personal pride in the preparation of the food to ensure their recipes create a special dining treat for their patrons.

An antique railroad luggage rack has been converted into the restaurant's produce wagon salad bar. Salad lovers will really enjoy this cornucopia of vegetables and garnishes.

As the menu states, Cody's Dining Room offers you, "delicious beginnings, marvelous middles and happy endings."

Dr. Tom Miller, Dentist

Beginning November 1, 1984, Dr. Tom J. Miller will open his general practice dentist office in Suite 201 of the new Stratford Medical Building, 245 S. Gary Avenue. Miller, like other professionals in the Village, selected the Bloomingdale area because of its growth. He is also currently looking for a home in Bloomingdale and intends to be involved in the community.

In addition to being on the staffs of Central DuPage Hospital and Marklund Home, Dr. Miller also teaches classes at his alma mater, Loyola University. His teaching affords him the opportunity to become familiar with the latest techniques in dentistry.

As a member of the American Society of Geriatric Dentistry, Dr. Miller understands the problems homebound patients may have. Because of this, he makes house calls for these people who are unable to travel. Evening hours will also be offered. Appointments will be available six days a week with the office closed on Wednesdays. For an appointment, call 980-4988 or 980-4989. (Prior to Nov. 1, 577-7448).

Circle Benefit Services

In Marilyn Strodel's previous job she was constantly being asked questions about various types of group and individual medical insurance plans. She decided it was time to open a full-time counseling service. With her 22 years of experience and the use of her home at 176 Circle Avenue, Marilyn is now able to offer a wide range of services.

Among the services Strodel can provide are explanations of the following: the coverage and protection of your group or individual medical plan; how to file a claim; the benefits and your legal rights for benefits under your plan.

Although Marilyn does not sell medical insurance, she does work with insurance brokers in advising clients of cost-saving measures between various plans. If you have questions about your medical plan and don't know who to ask, try Circle Benefit Services at 980-0225.

Omnidentix

Omnidentix Office of Retail Dentistry is ready to be of service to individuals or families who need or want the convenience of being able to find a dentist office open seven days a week. Located on the upper level of Stratford Square Mall between Wieboldt's and Marshall Field, the dental office is one of three suburban mall locations.


Mr. Jack Madden, the Bloomingdale office administrator, says the convenience factor of Stratford is one of the primary reasons for locating in our community. Rather than having to sit in a waiting room while a member of your family is visiting the dentist, you can be given a beeper. Then you can spend the time shopping or browsing in the mall. When the individual's treatment is complete, you will be paged.

This office is not a clinic; it is staffed by four full-time doctors, one of whom will become your personal dentist. Appointments are accepted at 351-3777, but are not always necessary.

WSB WEST SUBURBAN BANK
of Carol Stream / Stratford Square
401 North Gary Avenue, Carol Stream, IL 60188 (312) 690-8700
355 West Army Trail Road, Bloomingdale, IL 60108 (312) 351-0600

Serving DuPage County 7 days a week

HOURS	DRIVE-UP	LOBBY
Mon.-Wed.	6:45 a.m.-7:00 p.m.	9:00 a.m.-5:00 p.m.
Thurs.-Fri.	6:45 a.m.-8:00 p.m.	9:00 a.m.-7:00 p.m.
Saturday	6:45 a.m.-5:00 p.m.	9:00 a.m.-1:00 p.m.
Sunday	10:00 a.m.-2:00 p.m.	Closed



Where Strength is Matched by Service

MEMBER
FDIC

MAINSTREET

Mainstreet will be the fifth major Department Store at Stratford Square. It will be sized down to 75,000 S.F. and construction is scheduled to begin in October, 1984, with anticipated opening in August, 1985. The store will employ about 200 people, both full and part-time. Sales Tax revenue would be comparable to the four other Department Stores at the Mall. Mainstreet stresses service to their customers. It will be a moderate-priced Department Store, but it will not be a discount. Mainstreet will not carry appliances, home electronics or furniture. They will stress moderately priced apparel and other soft goods for the home. When they open, 85% of their stock will be in name brands. Their concept rests on selling brands the customer knows and trusts.

Mainstreet, Bloomingdale, will be one of six stores to open in the Fall of 1985 which will be part of the second wave of stores to open in the Chicagoland area. Three stores will be opening in the Fall of 1984.

LIBRARY SURVEY

During the month of November the Library will be offering people a chance to express preferences for the business related materials they find most useful or would like the Library to acquire. A brief survey form will be available in the Reference area.

If you use the Library to locate information about job hunting, business or investments, please take time to complete a survey form. Knowing what you want will help us better serve you.

BLOOMINGDALE PUBLIC LIBRARY Children's Corner

"The hand is quicker than the eye," says Dave Mayer, "that's why there are so many black eyes!" Mayer's magic show, along with a costume parade and treats will be the Halloween party for children at the library on Saturday, October 27 at 2:00 P.M.

Anything might happen and usually does as Mayer causes a live bird to appear in a popped balloon, then disappear again. The 60-minute show is a rainbow of color with silk flags, streamers, flowers and live animals appearing and disappearing.

Mayer is not only a performing professional magician, but has opened schools on the magician's art of sleight of hand for business men and almost anyone who wants to see a mean little sister (brother) disappear. For more information call 529-3120.



BLOOMINGDALE PARK DISTRICT MUSEUM, "EYE OF THE CHILD"



Beginning Oct. 13th, the Bloomingdale Park District Museum will be hosting a special exhibit for children & adults alike, entitled the "EYE OF THE CHILD".

The 90 pieces in this show represent a delightful collection of folk art assembled by a California art teacher over a period of some 30 years. Produced solely by children, the pieces (masks, dolls, puppets and toys) were selected on the basis of their direct appeal to the untrained eye of the child. Representing over 25 different countries, the majority come from Southeast Asia, some from Central and South America and the remainder come from Europe, Africa and Asia Minor.

We hope you will visit this current Museum exhibit from Oct. 13th to Nov. 29th. All shows are free and open to the public on Tues. and Thurs. from 3-6 and Sat. 10-2. Please call the Park District office for further information or to arrange a group tour at 529-3650. Please note: the Museum will be closed on Thurs. Nov. 22nd for Thanksgiving. The Museum is located at 108 S. Bloomingdale Rd. across from the Post Office.

RE/MAX

REALTORS®

160 S. Bloomingdale Rd.
Bloomingdale, IL 60108



IF YOU'RE IN THE HOUSING MARKET...
HERE'S HOW I CAN HELP!!

- FREE Buyer Counseling
- FREE Market Evaluations
- Professional, aggressive marketing of your present home.
- Extensive, financing knowledge to benefit buyers and sellers.

DEDICATED SERVICE!! GUIDO SCHULTE 893-7860

WHAT'S HAPPENING

- Oct. 12 Lions Club Candy Day. Give generously, funds go to sightless and hearing impaired.
- Oct. 15 - "Eye of the Child" exhibit - Park District Museum
- Nov. 29
- Oct. 18 Chamber of Commerce Luncheon. "Medicine for the 80's and Beyond" Call 980-9082 for details.
- Oct. 20 Knights of Columbus blood drive at St. Isidore Church 8-11 A.M. Call Mel Clark, 894-9354 for appointment.
- Oct. 27 Children's Halloween party at Library. 2 P.M.
- Nov. 2 Marklund 30th Anniversary Round-up featuring Dale Evans. Call 529-2871 for details.
- Nov. 15 GREAT AMERICAN SMOKEOUT
- Nov. 16 BWC Christmas Auction 7:30 P.M. Indian Lakes. Info. - Gail, 893-1058 or Judy, 932-7739
- Nov. 21 Chamber of Commerce Christmas Showcase 6:30 P.M. Indian Lakes Info - 980-9082
- Nov. 17 Marklund Auxiliary Craft Show 9 A.M. - 5 P.M. Westfield Junior High
- Dec. 1 Lake Park Crafts Fair 10 A.M. - 4 P.M. 500 W. Bryn Mawr.
- Dec. 2 BWC Yule Promenade Call 894-0817 or 980-9368 for details.

FALL HYDRANT FLUSHING

It's that time of the year again. Starting October 22 thru November 2nd, the Water Division will be flushing hydrants throughout the Village. The flushing will occur between the hours of 10 P.M. until 2 A.M. in the morning. Residents with water softeners are encouraged to check the cycle time of their softeners so the unit does not regenerate during this period.

One question always asked is - Why does the Village flush hydrants? Hydrant flushing is routine maintenance for a water system. It accomplishes the following:

1. Improves water quality: Flushing removes minerals such as iron and manganese that have collected in the water mains.
2. Improves water flow: By removing these minerals the inside diameter of a water main is increased and therefore, allows a better flow of water.
3. Hydrant maintenance: A fire hydrant is a mechanical device. Operation of a hydrant lubricates internal mechanisms and gaskets.
4. Hydrant inspection: Any deficiencies are noted and repaired as necessary to insure that each hydrant will perform when needed for an emergency.

Westlake			
Subdivision	10/22, 10/23, & 10/24	Willowbridge Village	10/26
Fairfield Subdivision	10/24	Westlake Sunnyside	10/26
North and South Suncrest	10/25	Old Town	10/29
Medinah Country Estates	10/25	Old Town Estates	10/30
Brookdale Estates	10/26	Longridge	10/30
Deer Glen	10/26	Indian Lakes	10/31 & 11/1
	Stratford Place		11/1

STAND WITH "B.J." OCTOBER 26-27

by

Paul T. Greening

"Thanks to the help of so many people, I am happy to report that "B.J." can now stand up on her own for the first time," said Marklund Home Administrator Pat Pearce recently.

Unusual? Doesn't every child stand up on his own sometime in the second year after birth? Of course! But "B.J." had suffered a massive brain injury early in childhood while swimming in a home pool.

And now at the age of 12 when most girls today think about going to their first dances, "B.J." can stand up to the world around her.

Marklund Home in Bloomingdale is a major recipient of funds raised by the Knights of Columbus statewide Tootsie Roll Drive. The proceeds of the 1982 Drive were applied to the purchase of a specially equipped van. The 1983 Drive proceeds are being used to furnish the newly established parent room. Proceeds from this drive will be used to equip an on-site dental care facility. Two new dentists in the area, Drs. Tom Miller and William McElroy, have volunteered to staff the facility once it is in place.

So what? Your contribution on Tootsie Roll Weekend will help children like "B.J." to stand up to the world. Can you turn her down?

BLOOMINGDALE MEDICAL CENTER

-division of Glen Elyn Clinic, S. C.
177 S. Bloomingdale Rd.
Bloomingdale, IL 60108

Allergy	790-2550
Dermatology	790-2550
Internal Medicine	790-2550
Orthopaedics	790-2550
Gynecology / Infertility	790-2550
Pediatrics	893-9100
Obstetrics / Gynecology	790-2550

Lab and X-Ray facilities
also available.

ABOUT TOWN

JEFFREY FRITZ, 6½ year veteran of the Bloomingdale Police Department, was promoted to the position of sergeant July 31. He has had experience in a number of areas during his tenure with the department. For the last eight months he has worked as a detective as well as coordinating community relations programs. Fritz is now back on the street as a supervisor. Taking his place as detective and community relations coordinator is **SCOTT STICK** who has been with the department 2½ years.

LESLIE BATTE, 17-year old senior at Lake Park was crowned Miss Bloomingdale at Septemberfest. A National Honor Society member, she is the feature editor of "Perspective," Lake Park's newspaper and plays varsity badminton. First runner-up **MARY WESOLEK** has been a member of the class council at Lake Park for three years, serving as vice president last year and is very active in sports. **DYLAN McMAHON**, second runner-up has a 5.0 grade point average at Lake Park and is on the varsity track and field team. Third runner-up **LISA DIAMOND** is involved in music at Glenbard North playing clarinet and contrabass clarinet. She has earned many medals in both solo and ensemble competition. **JULIE THEIS**, fourth runner-up, has been in Lake Park's chorus all four years and was inducted into the National Honor Society as a junior.

Assistant Village Administrator **MARTY BOURKE** and his wife **CATHIE** are thrilled with the birth of their first child, **MEGAN COLLEEN**. The beautiful little girl made her appearance at 5:29 P.M. on September 20 at Central DuPage Hospital weighing in at 7 lb. 7 oz.

YULE PROMENADE

The Bloomingdale Women's Club has found a great way to ease us into the Christmas spirit this year with their Yule Promenade on Sunday, December 2.

The day runs from 10 A.M. until 5 P.M. starting out at Indian Lakes Resort in the Navajo Room. Here refreshments will be served, maps handed out and 20 quality crafters will display and sell their items.

The five area homes to be viewed will be decorated by the following local florists: Roselle Greenhouses, Erickson's of Addison, Scheffler's, Gayla-BoKay of Glendale Heights and Davea Horticulture. The floral items on display may be purchased or ordered at the time of the promenade.

Tickets are \$5 presale, \$7 at the door. For tickets or information call 894-0817 or 980-9368.

THE GREAT AMERICAN SMOKEOUT: BLOOMINGDALE TO GO SMOKELESS

On Thursday, November 15 the Bloomingdale Unit of the American Cancer Society will sponsor the eighth annual "Great American Smokeout". On this day smokers throughout our town and across the nation will try to give up smoking for a day and perhaps longer.

Mayor Sam Tenuto is planning to issue a Village proclamation declaring a smokeless day for Bloomingdale. Other events are being planned throughout the Village.

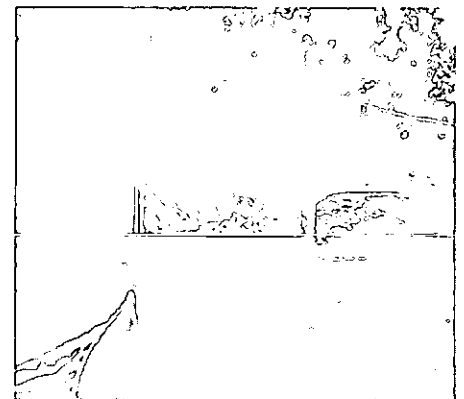
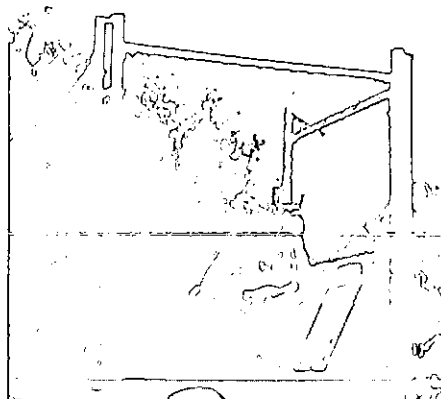
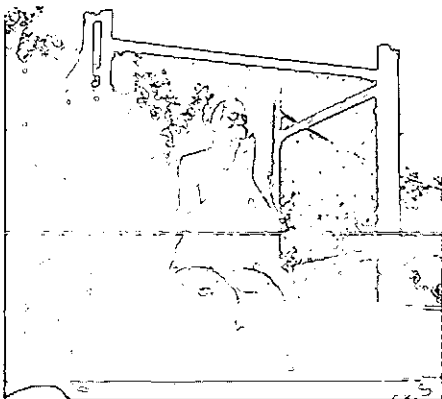
MARKLUND CRAFT SHOW

The Marklund Home Auxiliary will be host to the second annual Arts & Crafts Show to be held November 17 from 9 A.M. to 5 P.M. at Westfield Junior High on Fairfield Way.

The craft show will have a great variety of crafts represented as well as Christmas items of all types. Again this year the Auxiliary will have several door prizes, including a Cabbage Patch preemie and four collectors plates.

Auxiliary president and longtime Marklund employee Leola Ehorn is again looking forward to participating as a crafter. The Auxiliary is a fundraising organization for the Marklund Children's Home. For more information call Rita, 529-0834 or Sandi, 351-1132.

PHOTO ESSAY: How Mayor Tenuto Spent His Afternoon in the Knights of Columbus Dunk Tank - Septemberfest



Septemberfest 1984

LETTER TO THE EDITOR

I would like to take this opportunity to thank all the members of the Septemberfest committee: Bill Kouchoukos, Jane Batte, Dawn Myers, Diane Howanski, Bob Iden, Buzz Puccio, Dennis Szafran (Public Works), Jeff Fritz and Tim Goergen (Police Dept.), Nancy Wilson and Jim Wittersheim. You all did a splendid job and made an outstanding Septemberfest.

Additionally, thanks to the merchants in town who generously donated nearly \$2000 in prizes. They are:

Lustig Jewelers in Stratford - the official Festival Queen jeweler again provided a crown for the queen, gold engraved disc necklace and gold charm bracelet for the queen. They also provided a gold engraved disc necklace for each of the four runners-up.

Marshall Fields in Stratford - \$300 in gift certificates for clothing for the queen and each of the runners-up.

Septemberfest Committee - \$300 in gift certificates from clothing stores in Stratford for the queen & her court.

Talman Home Federal - 13" color TV and \$75 savings account for the queen.

Platt Hill Nursery - all the flowers for the queen & her court.

Bloomington State Bank - \$100 savings bond for the queen

Paul Paoletti - \$75 gift certificate for his new women's clothing line for the queen

Now Playing Video - a video tape of the coronation ceremony at Septemberfest

Art Craft Photographer - color 11" x 14" portrait of the queen

Bloomington Pharmacy - four \$10 gift certificates for the runners-up

Rosati's Pizza - pizza for the get-acquainted party for the contestants

Oriental Express - five oriental hairpins

Anthony's Formal Wear one free tuxedo rental, given to the queen's escort

Headlines - one free haircut & style

Fireside Crafts - plaques for the queen & her court

West Suburban Bank - pen & pencil sets for the queen & her court

American Heritage Bank - one ladies watch

Ruth's Hallmark - one collector's plate

Wicker 'N Country - "potpourri in a basket"

Flipside - albums for the runners-up

Video Fan Fair - one overnight movie rental

Hair's the Place - one haircut and style

Thanks to all the business people in our community who support our organizations and village activities. Let's remember to support them in return. Thank you also to the property owners and merchants in Old Town for their cooperation as thousands descended upon the area for the day.

Another thank you to the people who served as judges for the Queen contest: Dawn Myers; David Jaynes, Talman Home; Shirley Olszewski, Old Town Commission; Laura Hartsgrove, 1983 Queen; Lynne Denemark, Woman's Club; Murray Gallahan, Olde Clocks, Ltd.; Ed Levato, Chamber of Commerce; Dee Hanrahan, American Cancer Society; and Jack Hummel, Lions Club.

Last, but not least, I would like to thank the employees and elected officials of the Village for all their cooperation and assistance in making a successful Septemberfest.

There are so many people to thank, I'm sure I missed someone - thank you.

Sincerely,

Viola M. Morrisroe
1984 Septemberfest Chairman



Leslie Batte, Festival Queen 1984



Joe Draghi and Dolores Howe of the Landmark Committee with the scale model of the Gazebo.



"This clown business is serious stuff," says Julie Brandt.



Best of Show - Fine Arts, William Wilson of Chicago.



Lolly, Rosie and Karkee from Christ the Redeemer Church.

“WHAT DO YOU THINK?”

We in Indian Lakes have no sidewalks for residents to walk on or toddlers to ride their toys on. Our children have to walk on the street to get to the bus stop. Also there is a great deal of speeding on Cardinal Drive. Can't the speed limit be lowered to 15 MPH?

Name withheld by request

Certainly, sidewalks increase the safety of pedestrians in the area, but this is an item which would have to be budgetary item addressed by the Village Board. With respect to the speed limit, by law, local authorities cannot decrease the limit to less than 20 MPH. Dan Wennerholm, Director of Public Works and Engineering, and myself will be looking into this area to see what can be done from both an engineering and an enforcement point of view.

Gary J. Schira
Chief of Police

This household would like to thank you and the Park District for the wonderful 4th of July fireworks display this year. Judging from the comments of others around us, I'm sure this is an expression that hundreds would concur in.

D & M.E. Mead
158-D Chatham Court

The Park District is a separate governing body and the credit for the fireworks display goes entirely to them. We have passed along your comments and they thank you for expressing your feelings.

Martin J. Bourke
Assistant Village Administrator

What a wonderful job the Village did paving and fixing Cardinal Drive. As residents of Raven Lane for eight years I would like to know when the Village will be fixing our street from Eagle to Thrasher. It is in deplorable condition.

Georgette Nootens
186 Raven Lane

Each year the Public Works and Engineering Dept. prepares a list of streets to be paved in order of priority, along with cost estimates for each. Our priority system includes current condition, traffic volumes and estimates of the impact of delayed repairs. I am sure the section of Raven to which you refer will be on the priority list next year, and will be resurfaced if the program receives funding in next year's budget.

Daniel C. Wennerholm
Director of Public Works
and Engineering

MAKE YOUR VOICE HEARD OVER THE ROAR OF THE ENGINES!!!

686-2377

O'HARE NOISE COMPLAINT HOTLINE

OPINION FEATURE

Please tell us if you have any suggestions or questions for your Village. What you think is important to us. Write your thoughts below, then detach and mail to "What Do You Think," Village of Bloomingdale, 201 S. Bloomingdale Rd., Bloomingdale, IL 60108. No unsigned submissions will be considered. The ALMANAC reserves the right to reprint all or part of the submission depending upon length. We do, however, try to retain the gist of the query.

My thoughts are as follows: _____

Name _____ Address _____

Print my name: Yes _____ No _____

BLOOMINGDALE BUSINESS DIRECTORY

ACCOUNTANTS

Schoen, Coyle & Co.
Certified Public Accountants
125 S. Bloomingdale Road
980-4121

ALARMS

Chicago Metro Alarm, Inc.
Residential - Commercial - Industrial
117 W. Lake Street 894-4700
Burglar • Fire Alarm • Medical Alert

BURGLAR ALARM SYSTEMS

Slager Security Systems
123 First Street
529-0198
We Specialize in Homes & Offices

CARPET CLEANER

Broom Brigade, Inc. 894-4666
Commercial & Residential Cleaning
Carpet • Upholstery • Walls • Windows
Furniture Touch-up & Repair

CARPET CLEANER

Sansone Carpet, Drapery
and Upholstery Cleaners
312 Edgewater Drive
893-4010

CHIROPRACTOR

Bloomingdale Chiropractic Clinic
Dr. James Dean
181 S. Bloomingdale Rd.
980-5460

CHIROPRACTOR

Keller Chiropractic Clinic
220 E. Lake Street
980-6555 Hours by Appointment
Total Health Care Facility

DENTIST

Frank D. Letizia D.D.S.
Clover Leaf Towers Suite 309
201 E. Army Trail Road 529-0303
Family Dentistry

DENTIST

William J. McElroy, D.D.S.
183 S. Bloomingdale Rd., Suite 105
351-4440
Children's & Hospital Dentistry

DENTIST

Robert Meyers, D.D.S.
135 First Street
893-4650
Office Hours by Appointment

DENTIST

James Paradowski, D.D.S.
255 E. Lake Street
529-7130
Office Hours by Appointment



Village of Bloomingdale

201 S. BLOOMINGDALE ROAD
BLOOMINGDALE, ILLINOIS 60108

POSTAL PATRON, LOCAL
BLOOMINGDALE, ILLINOIS 60108

BULK RATE
U.S. POSTAGE
PAID
Bloomingdale, IL
60108
Permit No. 16

GENERAL MERCHANDISE

Econ-O-Mart
110 Ridge Road
529-5490
You're invited to browse and save.

HARDWARE

Springbrook Ace Home Center
140 E. Lake Street
894-6600
Largest Ace Home Center in DuPage

HARDWARE

Warnimont's True Value Hardware
23 W 745 Lake Street
529-3030
Lawn Mower Service Center

HOUSECLEANING

The Bucket Brigade
289-9733
"Reliable, Personal Homecare"
Free Estimates

INCOME TAX SERVICE

Behr & Co.
Certified Public Accountants
Tax & Financial Planners
247 Lakeshore Lane 351-0003

INVESTMENTS

IDS/American Express Inc.
Personal Financial Planning
Dorothy J. Lingeman
359-3220 or 529-0858

JEWELER

Lustig Jewelers *Since 1949*
Stratford Square Mall Upper Level
351-8900 Diamond Setting • Engraving •
Custom Jewelry • Watch & Jewelry Repair

MARKETING

Small Business Services
Marketing Assistance
Darla Moore
529-1847

NURSING HOME

Applewood Manor Convalescent Center
275 Army Trail Road
893-9616
"Let our family help yours"

NURSING HOME

Bloomingdale Pavilion Nursing Home
311 Edgewater Drive 894-7400
Retirement • Convalescence • Restorative
Nursing • Rehabilitation • Intensive care

**KEEP YOUR TAX DOLLARS
WORKING FOR YOU!
BUY IN BLOOMINGDALE!**

OFFICE MACHINES AND COMPUTER FURNITURE

Sales - Service - Rentals - Supplies
Call for demo - Your office or ours
BMK Associates 980-9396
109 Fairfield Way Suite 105

ORTHODONTIST

Dr. Clayton J. Crane
Clover Leaf Towers Suite 309
201 E. Army Trail Road 894-4333
Practice Limited to Orthodontics

PERIODONTIST

Stanley E. Treitler D.D.S.
130 N. Bloomingdale Road
893-7979
Practice Limited To Periodontics

PHARMACY

Bloomingdale Pharmacy
Bloomingdale & Schick Roads
980-9198 or 980-9199
Free Prescription Delivery

PHOTOGRAPHERS

Art Craft Photographers
First Street & Schick Road
529-8400
Weddings • Portraits • Invitations

PRINTING

Budde's Print Shop
159 West Lake Street
894-4009
Let Us Make You Look Good In Print

SECRETARIAL SERVICE

Western DuPage Secretarial Service Inc.
109 Fairfield Way — Suite 106
893-9340
Exec. Typing & Word Processing Service

VETERINARIANS

Bloomingdale Animal Hospital
Drs. Borman, Olson & Page
290 Glen Elynn Road
893-4330