

Volume 11, Number 2

April 1986

## 1985 ANNUAL REPORT FROM MAYOR SAM TENUTO



As our fiscal year for 1985 and a portion of 1986 draws to a close on April 30, I want to share with you our accomplishments as well as our future goals for the Village of Bloomingdale.

### ANNEXATIONS

In 1985, we saw the positive results of many years of land planning along the Army Trail Road corridor by annexing the following property into our Village:

In December, we approved an Annexation Agreement with Melvin Simon and Associates of Indianapolis. Mel Simon is the nation's second leading shopping center developer. The Village agreed to annex 80 acres at the southwest corner of the Village on Army Trail Road adjacent to the recently opened Bloomingdale Fashion Center. On the new site, Simon plans to construct an open air shopping mall which will feature a Service Merchandise as the anchor tenant. Additional smaller stores will fill in the rest of the total 260,000 square feet of retail. The Village expects the Simon Group to approach the Village with a plan to annex an additional 80 acres for the purpose of constructing an adjacent shopping mall with two additional major anchor tenants.

### DEVELOPMENT

#### Stratford Area

##### STRATFORD SQUARE MALL:

**Tenant Spaces:** Work has been completed on 20 tenant spaces, five of which are new and 15 are relocations, remodelings, or name changes. This brings the mall total from 166, 90% occupied in 1984 to 171, 92% occupied for 1985.

**Main Street Store:** A 75,000 square foot major department store, started construction in 1984 and has been completed and opened in August 1985. This completes five of the six potential major department stores and gives Stratford Square Mall 1,475,000 gross square feet.

##### ASA OFFICE BUILDING:

The second building of the complex (100,000 sq. ft.) was completed and occupied this year, giving the company 180,000 square feet of office space. The two-story glassed-in atrium still remains to be completed.

##### COURTYARDS OF BLOOMINGDALE:

Seven additional tenants have been added since the grand opening of the center, bringing it to 100% occupied. Phase II of the retail and the office building are now in the plan review stage.

##### BLOOMINGDALE FASHION CENTER:

This shopping center was completed in the Fall now has 13 of 28 tenant spaces occupied.

##### TIRE AMERICA:

A new addition to Merchant's Park in the Stratford area is Tire America. Tire America is an automobile supply retail store which also installs the tires it sells. It will be located to the west of Burger King at Stratford.

Continued on Page 2

**WHITE SOX CONCERN**  
See page 6 for information and  
map designating location.

# 1985 ANNUAL REPORT FROM MAYOR SAM TENUTO

Continued from Page 1

## ROCKY ROCOCO PIZZA:

In January, the Village Board approved plans for the construction of a Rocky Rococo Pizza Restaurant which will be located on Army Trail Road between Red Lobster and St. Isidore's Church.

## HERITAGE AT STRATFORD

During the late months of 1985 and culminating with the Village Board's approval in early 1986, a new single-family housing development was approved in the Stratford area. This is the first housing development in the Stratford area since 1980.

The homes will be developed by Meridian Development Company out of Florida. The homes will range in price from \$115,000 to \$165,000. Construction of the first phase of the project will begin in the Spring. The project is specifically located to the north of Schick Road and Springdale Drive. The development will consist of 190 units and possess its own recreational site and natural preserve.

Including the Meridian development, there are approximately 450 acres remaining planned for residential development in the Stratford area.

## OTHER DEVELOPMENT

### ONE BLOOMINGDALE PLACE APARTMENTS:

The Village Board approved the issuance of \$8.8 million in Housing Revenue bonds to allow for the construction of an eight-story apartment complex which will contain 168 units. The apartments will be located to the north of Indian Lakes Country Club, to the rear of the Country Club Estates Development. These apartments will offer many amenities, such as a swimming pool, open space, and underground parking.

### LINCOLN/MERCURY DEALERSHIP:

The Village Board approved the plan for an automobile dealership to be located on Lake Street to the west of Platt Hill Nursery. The auto dealership will be the Village's first, and it will be owned and operated by one of the owners of FencI-Tufo Chevrolet.

### DK DEVELOPMENT - BROOKDALE OFFICE CENTER:

The Village Board approved a plan for the construction of two four-story professional buildings to be located at the corner of Army Trail Road, Brookdale Drive, and Creekside Drive at the southwest corner of the Village.

## PLANNING PROGRAMS

As our Village continues to develop and expand, so must our planning strategies. The Village Board, in conjunction with the appropriate Commission, in the next few years, will be working with our Village Planner on the following planning programs:

- Comprehensive Plan Update
- Sign Ordinance
- Off-Street Parking and Loading Ordinance
- Subdivision Controls & Planned Unit Development Ordinance
- Old Town Plan

## LAKE MICHIGAN WATER PROJECT

Through the intensive lobbying and litigation efforts of Bloomingdale and other communities, the horrendous legislation passed by the State concerning this project was significantly modified. The modified DuPage Water Act was passed and signed by the Governor this year.

The pipeline project is again back on track with the passage of the Countywide quarter-cent sales tax levy championed by Bloomingdale. This funding mechanism will result in a solid pipeline project at the lowest possible costs. The Village would like to thank all those who voted "yes" to Lake Michigan Water in the November referendum.

## CABLE TV UPDATE

Cable TV in Bloomingdale is at a point where, as of January 22, 1986, the cable has "passed" all housing units in Bloomingdale. There were 2,517 actual subscribers.

Bloomingdale is a member of NORDCAT, a consortium with Roselle, Carol Stream, Itasca, and Wood Dale to provide Cable TV. Our system is in its infancy, and there is a great deal of work to do to start up such services as "local access", "local origination", and increase Cable TV coverage of local events.

NORDCAT has recently hired a new Cable Coordinator. Cheryl L. Pasalic is our Cable Coordinator and will office in the Roselle Village Hall (980-5153). She will be contacting many of the Community organizations in the next few months and introducing some of the activities available in Cable TV. Miss Pasalic will be working on a part-time basis, between 20-30 hours per week. She comes to us with good experience levels and qualifications.

Any problems with your Cable TV should be reported, first by telephone, and a follow-up to Miss Pasalic in writing. Service levels have not been as high as we would like, and we expect MetroVision to improve. We invite your comments. Remember, Cable TV is primarily an entertainment medium as it is presently constituted nationwide. Like any other entertainment service, it depends on your feedback.

Continued on Page 3

# 1985 ANNUAL REPORT FROM MAYOR SAM TENUTO

Continued from Page 2

## **POLICE PROGRAMS**

### **1. Community Relations Programs**

The Police Department in 1985 continued to expand its efforts in the area of Community Relations and Crime Prevention, making 879 contacts with adults and 4,905 contacts with juveniles through these programs.

In this regard we have also done the following:

- Purchased anatomically correct dolls to aid in interviewing children in sexual abuse cases.
- Added the McGruff full-body puppet to our school presentations covering such topics as bicycle safety, vandalism, general safety, shoplifting and others.
- Added slide programs (such as Speaking Out, The Power Kit, and The Safety Net) to our Stranger Danger School Program, which addresses attempted pickups, abuse, and "touching" situations.
- Have both VHS and Beta Video equipment available for use in videotaping children to supplement our child fingerprinting program.
- Have provided the Bloomingdale Public Library with an engraver which can be checked out by residents to engrave their driver's license number on their valuables.
- Have actually targetted certain geographical areas of town by telephoning residents to help form a Neighborhood Watch unit in their area.

### **2. Computer Network**

As projected, the new computer network has been installed and implemented. Computer Aided Dispatching (CADS) has allowed service to the public in a more comprehensive, faster manner. The data base generated from CADS has enabled a more vigorous prosecution of offenders in many instances.

### **3. Accident Analysis**

The Accident Analysis program was fully functional during 1985 and will be even more useful in 1986 as more data is accumulated. Being able to analyze traffic accidents and their causes in-house, has enabled coordination with the Engineering Department on several projects during 1985, resulting in safer roadways for the community; 1986 will bring more of the same. The local program performs on a smaller scale everything that the Illinois Department of Transportation (IDOT) performs on a larger scale. IDOT intends to refer communities looking for a locally based accident analysis program to Bloomingdale.

### **4. Expansion of Communications Staffing**

Expanding the Communications staff has resulted in better levels of service to the community. Aided by a radio system that allows, for example, an officer in downtown Chicago on assignment to communicate directly with another officer inside Stratford Square, our Communications Section staffing expansion provides more individualized attention to an individual caller's problems.

### **5. Follow-up Investigation**

We continued our commitment to providing the citizens of Bloomingdale the finest follow-up services available during 1985. Bloomingdale Investigators followed up on just under 1,900 cases last year, continuing our ongoing commitment to the community, that a crime reported is a crime pursued as far as possible, rather than "just another report for the drawer."

### **6. Liquor Licensee Training**

To implement certain provisions of the newly revised Liquor Control Ordinance, a program was instituted of Liquor Establishment Employee Training, which should prove very successful in reducing the incidence of underage minors drinking in Bloomingdale liquor establishments. Continued expansion of the Liquor Licensee education program will continue to aid in reducing the severe consequences of alcohol abuse.

### **7. Expansion of Directed Patrol Program**

In 1986, the Directed Patrol Program will be expanded. This will allow for specific assignments of uncommitted time to deter specific offenses. Rather than coping with growing neighborhood problems after they happen, the Directed Patrol Program will concentrate manpower resources on problems before they become larger, resulting in an improved patrol presence in the community at times and places when that presence does the most good.

### **8. Improved Field Training Program**

An improved Field Training Officer curriculum for new police recruits has been developed, and in-service training provided to new recruits before they are certified to be on solo patrol has tripled. New officers will continue to be highly trained in the specific aspects of what policing Bloomingdale is all about.

### **9. Expansion of Neighborhood Watch Program**

One of the Community Relations goals for 1986 is an expansion of the Neighborhood Watch Program. Without question, the need for more active participation by residents in this program is critical. There is a need to ensure that all neighborhoods in the Village are properly represented. Active Neighborhood Watch Programs in other communities have proven to be successful in reducing

Continued on Page 4

# 1985 ANNUAL REPORT FROM MAYOR SAM TENUTO

Continued from Page 3

burglaries and other crimes in residential areas. More involvement on the part of residents is needed to make the program a success.

## COMMUNITY SERVICES PROGRAMS

### 1. Transportation

Federal funding was secured, and construction work began on the Schick Road widening and improvement project. Construction work is being performed by R. W. Dunteman of Addison and inspected by James J. Benes & Associates of Oak Brook. Scheduled completion is July 1986. Construction costs are \$800,000.00, with the Village portion being 30%.

Pedestrian access to the Village Hall and Library was enhanced by the construction of a new sidewalk along Bloomingdale Road from Edgewater south to Greenway. This project costs approximately \$30,000.00.

Improvements to Bloomingdale/Roselle Road between Franklin in Bloomingdale and Irving Park Road in Roselle was essentially completed during the 1985 construction season. The final surface will be laid this summer.

The Village, in cooperation with Glendale Heights and DuPage County Highway, have applied for Federal funding for intersection improvements and traffic signal installation at Army Trail Road and Cardinal Drive. Design work is scheduled to begin in 1986.

Circle Avenue Traffic Signal - The State of Illinois and the Village are sharing the cost of installing a traffic signal at Circle Avenue and Lake Street. Estimated cost is \$90,000.00, for which the Village will pay approximately 5%.

Design work for the signalization and intersection improvements at the Bloomingdale Road/Edgewater-Raven intersection is scheduled for 1986.

Major road and drainage improvements were started and completed in the Old Town area. Total construction costs were \$140,000.00.

### 2. Maintenance of Infrastructure

Our Street Resurfacing Program was again completed this year using in-house staff for the design and contract administration and utilizing our Street Repair crews for the patching. The following streets were completed:

Maple Avenue from Lake Street to North End  
Park Avenue from Maple to West End  
Lawrence Avenue from Maple to West End  
Oak Street from Franklin to West End  
Rosedale Ct. from Franklin to Schick  
Lakewoods Ct. from Oak to West End  
Washington St. from Bloomingdale to Day  
Third Street from Washington to Schick  
Raven Lane from Thrasher to Eagle  
Cardinal Drive from Army Trail to Oriole  
Swallow Avenue from Cardinal to Oriole  
Robin Ct. from Swallow to West End

Hingham Lane from Cambridge to Fairfield  
Braintree Drive from Schick to Fairfield Ct.  
Fairfield Way from Schick to 227 Fairfield Ct.  
Winston Lane from Fairfield to Edgewater  
Edgewater Ct. from Edgewater to S.E. End  
Hempstead Dr. from Hempstead Ln. to Plymouth  
Hempstead Ln. from Hempstead Dr. to Greenway  
Plymouth Ln. from Hempstead to Greenway  
Pinewood Ln. from Glen Ellyn to Elmwood  
Oakwood Ln. from Glen Ellyn to Colony Green  
Cambridge Ln. from Schick Road to Braintree

The total cost for the Road Maintenance Program for 1985 equalled \$223,400.00. For 1986, an approximate amount of \$250,000.00 will be spent on the Road Maintenance Program.

The drainage ditch on Gen Ellyn Road from the Glendale Golf Course entrance to Lake Street was graded, and an erosion control mat was installed and then seeded. This project should improve the drainage and will enhance long-term aesthetics and maintenance needs.

### 3. Tree Planting Program

The Tree Planting Program continues to be successful by offering both parkway and front yard trees. This year's program, scheduled for planting in Spring 1986, offered a variety of more exotic species including Kentucky Coffee trees and Bradford Pears. A total of 121 trees have been ordered with the Village sharing costs with residents 50/50. Village budget for the project is \$10,000.00.

## NITRIFICATION MANDATE - FEDERAL EPA

The Village recently requested Baxter & Woodman, a Crystal Lake based Engineering Consulting firm, to prepare a contract for providing design and inspection services for the proposed wastewater plant reconstruction, as mandated by the Federal Government. The costs of the first phase of reconstruction is expected to be in the range of \$6,500,000.00 This reconstruction should be sufficient to last until the late 1990's, at which time additional capacity will be needed. Federal Mandate requires compliance by July 1, 1988.

## FINANCIAL ACTIVITY

1985 saw the Village continue to benefit from the Sales Tax generated by the Army Trail, Lake Street, and Old Town commercial corridors. The Property Tax bill for the Village of Bloomingdale is one of the lowest in DuPage County due to the Sales Tax revenues.

# 1985 ANNUAL REPORT FROM MAYOR SAM TENUTO

Continued from Page 4

Although Sales Taxes were performing well, outside factors are keeping our budget tight. The most important factor is the increase in liability insurance costs. The Village incurred a 50% increase in this cost but was fortunate to obtain continued coverage; some jurisdictions cannot obtain coverage at any cost.

The Finance Department welcomed its new IBM computer which will allow significant efficiencies in the collection of water and sewer fees and allow space to expand for the future.

Interest rates have been low this year, so a significant effort was made to maximize Village investments. In the coming year, the Village will face the challenges of financing both Lake Michigan Water and the new nitrification guidelines dictated by the Environmental Protection Agency.

## TAX ABATEMENTS

We expect to be adopting ordinances soon which will abate taxes in the range of \$650,000.00. This program of abatement is a continuation of the past five years to offset property taxes as much as possible with increased Sales Tax receipts. Sales Tax increases from existing business and the new business under construction and proposed are all very critical to maintaining or lowering our property tax rates.

## NEW PUBLIC WORKS AND POLICE FACILITY

Space planning efforts are continuing with the assistance of architectural consultants. With continued growth of the Village in commercial and residential development, there is a need for an expansion to the Public Works building on Glen Ellyn Road and the Village Hall/Police Station.

The Population Projection Study, which was recently completed, predicted an ultimate Village population of 28,000. This population figure is approximately double the present population of 13,500. The plans for the new facilities will take into account present needs and future growth demands.

## CLOSING STATEMENT

Throughout 1985, Bloomingdale set an example of the benefits to be derived by leaving neither Village growth nor improvements to chance. Policy and planning set direction, but the credit for gains made is in large part due to the continual efforts of those responsible for day-to-day operations. Our Village Staff can be proud of their work done this past year. My sincere thanks to our Village Clerk, Board of Trustees, and Commission members for the endless hours and commitment contributed on their part.

Last, but most important, Bloomingdale is excelling as a quality community because of the many caring residents involved within the civic, school, park, and church groups. They render a vital support system, determine local character, and provide the motivation necessary for a high quality of life in Bloomingdale.

Again, on behalf of the local Village government, I welcome the interest and concern of those residing in the Village. Your input is always appreciated.

VILLAGE ALMANAC  
is published bi-monthly by  
The Public Relations  
Committee of the  
Village of Bloomingdale.

Editor,  
Mary Ellen Johnson - 351-1503  
Production Assistant  
Don Lively

Address all correspondence to:  
Village of Bloomingdale  
Public Relations Committee  
201 S. Bloomingdale Road  
Bloomingdale, IL 60108  
Phone: 893-7000



Sumit Advani, Dan Bacharowski, Mark Ludvigsen and Glen Hall of Cub Scout Pack 57, Webelos Den 2 recently visited Mayor Sam Tenuto and toured the Village Hall as part of their Citizen Activity Badge.

THE DEADLINE FOR THE  
JUNE ISSUE IS MAY 25

## NOTICE

A quick reminder to all those planning gardens or fences — you must call J.U.L.I.E. at 1-800-892-0123 before you dig. A cut TV cable could cost you.

Samuel J. Tenuto  
VILLAGE PRESIDENT  
Marie E. Tayfel  
VILLAGE CLERK  
Robert F. Reeves  
VILLAGE ADMINISTRATOR

### TRUSTEES

Biff Behr  
Finance & Budget,  
Finance Commission, Park District  
DuPage Water Commission  
Walter Cropper III  
Police, Health & Safety, E.S.D.A.,  
Police Pension Board  
Board of Fire & Police Commissioners  
RTA Services  
Joanne Hildt  
Old Town/Public Relations  
Old Town Commission,  
Public Relations Committee,  
Chamber of Commerce,  
Community Development Commission  
Suburban O'Hare Commission  
William Horvath  
Public Works,  
Regionalization Committee  
Robert Iden  
Plan Commission, Architectural Review,  
Comprehensive Planning Committee  
Cable TV  
Sebastian J. "Buzz" Puccio  
Zoning, Building & Street Maintenance  
Library Board

# DUPAGE WHITE SOX — FOR OR AGAINST

The proposal to locate the White Sox Stadium on a site on Lake Street, immediately east of Medinah Road, has raised serious concerns with the Village Board. (See Map Insert).

The very close proximity of the proposed Stadium to residential areas of Bloomingdale, *less than 1/2 mile from Westlake "Sunnyside,"* illustrates these concerns.

The principal problems identified to date are:

1. The addition of 15,000 to 20,000 more vehicles to attend Stadium functions primarily during the most heavily impacted evening rush hours on already impacted highways.
2. WHO will pay for the millions of dollars in costs to acquire right-of-way and widen Lake Street, Army Trail Road and other highways.
3. The noise impact on Bloomingdale residents from Stadium functions and fireworks has not been addressed.
4. We are concerned about the ambient air quality if 15,000 to 20,000 more vehicles are introduced into stop-and-go traffic on Lake Street.
5. Drainage on the proposed site presently a large wetland area, is of great concern.
6. The Stadium is proposed to be "publicly" owned, with no property taxes paid to any taxing district.
7. The financial windfall, running into millions of dollars to the White Sox owners, can be reasonably inferred from the proposals and studies produced to date. What has yet to be identified is how and *which taxpayers* are to pay for the Stadium construction and the annual debt service costs as well as costs of supplying such basic services as Police and Fire protection without any property tax payments.

Based on available information, Chicago Developers and the City of Chicago apparently cannot or will not afford the White Sox "offer" which requires a governmental subsidy to pay the Bonds. We cannot see how DuPage County or any Village can subsidize it if Chicago cannot. Their own studies have shown the need for 42 policemen at each baseball game *onsite*. The "offsite costs" to Bloomingdale have yet to be identified specifically by anyone but it is certain to be overwhelming with no attendant revenues.

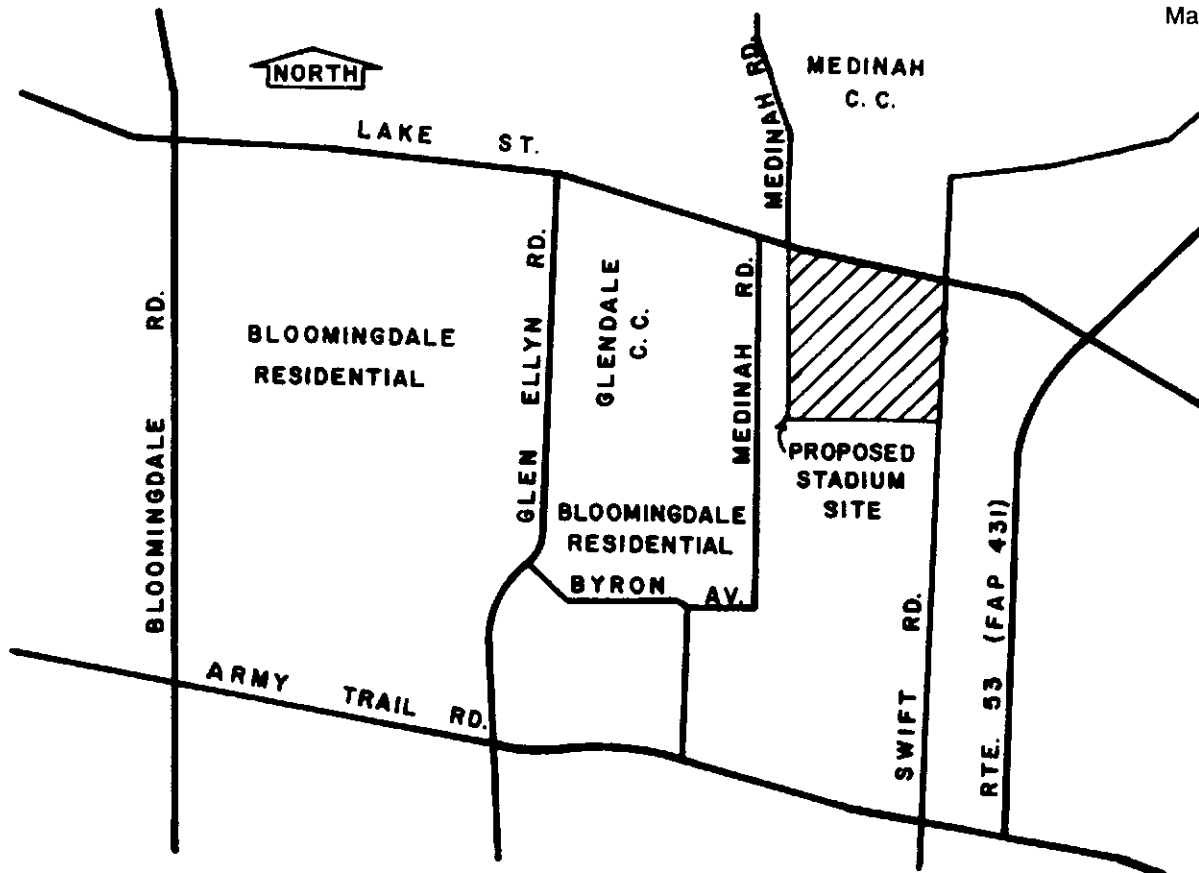
The Village Board has written a letter to the White Sox organization specifically addressing our concerns in great detail. We hope to receive a response to our questions.

As a result of our last issue of the Almanac wherein the proposed Stadium was mentioned, we received 33 comments from residents; only two were in favor of a stadium and thirty-one were opposed to a stadium at that location. We thank all of those who gave us their comments.

We ask now that you take a moment of your time and mail in or drop off at the Village Hall, as soon as possible, the tear-out form to be found on the last page of this issue.

This is a very important issue to all Bloomingdale. We need your input and support.

Mayor Sam Tenuto



## VILLAGE BOARD & COMMISSION MEETINGS

*The public is encouraged to attend all Board & Commission meetings.*

### REGULAR MEETINGS OF THE VILLAGE BOARD

2nd and 4th Monday of every month  
7:30 P.M. — Village Hall

### COMMITTEE OF THE WHOLE

1st, 2nd and 4th Mondays of every month  
7:30 P.M. — Village Hall

### PLAN COMMISSION

1st and 3rd Tuesday of every month  
8:00 P.M. — Village Hall

### BOARD OF FIRE AND POLICE COMMISSIONERS

3rd Thursday of every month  
7:00 P.M. — Village Hall

### POLICE PENSION BOARD

Quarterly beginning in January  
1st Wednesday  
7:00 PM - Village Hall

### E.S.D.A.

1st Tuesday of every month  
7:00 P.M. — Village Hall

### OLD TOWN COMMISSION

4th Tuesday of every month  
8:00 P.M. — Village Hall

### LIBRARY BOARD OF DIRECTORS

3rd Wednesday of every month  
7:30 P.M. — Library

### CHAMBER OF COMMERCE

Board of Directors Meeting  
1st Thursday of every month  
8:00 A.M. — Indian Lakes -  
Tamarack Room



*"We Deliver"*



**BLOOMINGDALE  
OFFICE SUPPLIES, INC.  
CONVENTIONAL & ELECTRONIC  
ALSO**

**Office Furniture & Equipment**

**185 E. Lake Street**

**Circle Center**

**529-9126**

**HOURS:**

**Mon., Tues., Wed., Fri. 9 to 6**

**Thursday 9 to 7**

**Saturday 9 to 2**

**Closed Sunday**

**Accepting Visa & MasterCard**

# SPRING HYDRANT FLUSHING

It's that time of year again. Starting May 12 through May 17, 1986, the Water Division will be flushing hydrants throughout the Village. The flushing will occur between the hours of 10 P.M. until 2 A.M. in the morning. Residents with water softeners are encouraged to check the cycle time of their softeners so that the unit does not regenerate during this period.

One question that is always asked is — Why does the Village flush hydrants? Hydrant flushing is routine maintenance for a water system. It accomplishes the following:

1. Improves water quality - Flushing removes minerals such as iron and magnesium that have collected in the water mains.
2. Improves water flow - By removing these minerals, the inside diameter of a water main is increased, therefore allowing a better flow of water.
3. Hydrant maintenance - A fire hydrant is a mechanical device. Operation of a hydrant lubricates internal mechanisms and gaskets.
4. Hydrant inspection - Any deficiencies are noted and repaired as necessary to insure that each hydrant will perform when needed for an emergency.

The schedule for hydrant flushing by area will be as follows:

Monday, May 12	Westlake Subdivision
Tuesday, May 13	Brookdale Estates Willowbridge Village Deer Glen
Wednesday, May 15	North and South Suncrest Medinah Country Estates North Bloomingdale Road
Thursday, May 16	Indian Lakes
Friday, May 17	Stratford Place Longridge Old Town Estates

## VIDEOTAPING OFFERED FOR CHILD ID

The Bloomingdale Police Department, in conjunction with Metrovision and the Northern DuPage Cable Television Agency (NORDCAT), is sponsoring a video printing session for children. Each child who attends will be videotaped for identification should that child ever be missing. Fingerprinting will also be available.

The Bloomingdale session will be held on Saturday, May 10 from 10 A.M. to 2 P.M. at the Bloomingdale Village Hall, 201 S. Bloomingdale Road. Parents must be present with the children to sign all release forms. Each parent must bring a 1/2 inch VHS video tape, which will remain their property to be kept in a safe place. No public record will be kept of this recording. Children should be dressed in regular playclothes.

For further information contact Cheryl Pasalic of NORDCAT at 980-5153 or Catherine Gill of Metrovision at 894-4949.

## CENSUS RESULTS

According to the official count of the special census, the population of Bloomingdale was 13,451 as of July 1, 1985. Incidentally, the detailed breakdown in four-year increments shows the largest age group is 35-39 years, numbering 1,356 persons.

## NATIONAL DRINKING WATER WEEK May 4 - 10, 1986

Safe, clean, good tasting water is our community's most precious commodity. Our goal is to provide the highest quality water and service at the lowest possible cost to our residents.

If you have any questions, comments, or would like more information, a display of the Water System will be at the Village Hall in the lobby May 5 - 9. Please stop in and pick up some helpful handouts and information sheets.

## EMPHASIS ON NUTRITION



Ray J. Vogrig and Matt Silady check out their homemade bread under the supervision of Debbie Ward.

Boy Scout Troop 189 had one of its most unusual meetings last month when they were given an opportunity to learn how to make bread. The activity was sponsored by the Bloomingdale unit of the American Cancer Society which is now concentrating its efforts on spreading the word about proper nutrition as a step toward preventing cancer.

Deborah C. Ward, R.D., the chief clinical dietitian at Glendale Heights Community Hospital is very excited about this kind of program. She was approached by the ACS to do the program for the scouts.

"Traditionally, girls have been the ones to spend time in the kitchen. Boys need to learn about eating more nutritiously too. This hands-on activity offers the boys a unique way to learn and understand more about nutrition."

She explained the bread the boys were mixing and kneading was made with whole grains which provide valuable fiber in the cancer prevention diet. Each scout left with a small loaf to bake at home.

**KEEP YOUR TAX DOLLARS  
WORKING FOR YOU!  
BUY IN BLOOMINGDALE!**

## FAMILY SERVICE ASSOCIATION

### "Sorrows of Stephen"

Don't skip a chance for fun at the Pheasant Run Theater in St. Charles on April 24 for a performance of the comedy, "Sorrows of Stephen." The event, a dinner/theatre benefit, is sponsored by the Board of Directors of Family Service Association of DuPage.

President Dan Schuchardt and first vice president Joseph D'Agostino, both of Glen Ellyn, offer business and professional people an opportunity to double their effort by helping Family Service and, at the same time entertain friends.

Family Service offers the community clinical counseling for families and individuals, a Big Brothers/Big Sisters program, budget counseling/debt management, an Employee Assistance program, protective services for the elderly and a temporary residence for seniors.

Reservations are requested at \$35 per person by calling F.S.A. at 682-1802. F.S.A. is a not-for-profit agency which allows donations to be tax deductible.

# Century 21

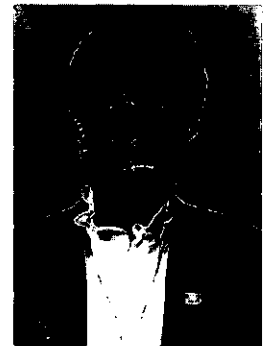


*is pleased to present*

## CAMELOT

181 S. Bloomingdale Road  
Bloomingdale, Illinois 60108  
Business (312) 894-1900

- Residential Sales
- Investment Property
- Property Management



**VI MORRISROE**  
REALTOR-ASSOCIATE®

*Each Office Is Independently Owned And Operated*



# "ROCK AROUND THE CLOCK"



Get out those old saddle shoes and penny loafers, poodle skirts and letter sweaters. Grab your steady and come to

## "Rock Around the Clock" The Best of the Fifties and Sixties

Sponsored jointly by the Bloomingdale Lions Club and the Bloomingdale Women's Club, this nostalgic evening will be held on April 26 from 8 P.M. - 1 A.M. at the Lakeside Bowl, 1100 W. Lake Street.

The evening will include a buffet dinner at 10 P.M. and prizes for the oldest class ring, letter sweater, etc. Tickets are \$15 per person and are available through club members or by calling Tom Zaccardi, 893-0956 or Colleen Kowalke, 980-9368.



Scoutmaster Ray Vogrig of Boy Scout Troop 189 presents Harry Kusiak of Harry's Tropical Garden with a special award for his help in obtaining the tree the scouts planted at the Landmark Gazebo in honor of the 75th anniversary of Boy Scouting.

## MR. BASEMENT, LTD.

### Waterproofing Specialists

- Drain Tile
- Crack Repair
- Sump Pumps

**529-4399**

Call For A Free Estimate

# SPRING FANTASIES

"Because We Care" is the motto of the Bloomingdale Women's Club. This spring BWC intends to prove they care enough about special children to designate all monies earned at their 12th annual charity luncheon and fashion show to the Make-A-Wish Foundation of Northern Illinois. The foundation is dedicated to fulfilling wishes of terminally ill children by transforming a child's fantasy into a real life experience.

"Spring Fantasies," this year's fashion show, begins at 11 A.M. on Saturday, April 19 at Indian Lakes Resort. Following luncheon at noon, fashions will be presented by Marshall Field and Company. The fashion show will be followed by a grand raffle.



Diana Podraza, BWC raffle prize chairman, models the silver fox fur jacket, first prize in the raffle of the day.

Raffle prizes will include a \$500 shopping spree at Marshall Field, a getaway weekend at Indian Lakes, as well as gift certificates, play tickets, lunches, dinners and lovely gifts from local merchants. First prize for the raffle of the day is a silver fox jacket.

Tickets for the fashion show are \$18 and may be obtained by calling Kathy at 529-4731 or Jana at 893-5329.

## DUPAGE JOB TRAINING

Appointments for summer employment through the DuPage PIC/Job Training office will be accepted as of April 1 at the agency's new Wheaton location, 421 N. County Farm Road.

DuPage County residents, ages 16-21, will be scheduled for eligibility appointments. Applicants must meet federal family low income criteria, be from families receiving Public Aid or food stamps, possess documented handicaps or be foster children to be eligible for the program.

All positions are full time with local non-profit agencies. Among the jobs available are recreation, maintenance, child care, clerical, handicapped aide and senior citizen aide.

In addition to full time jobs, a work-readiness program for 14-15 year olds will be offered through local school districts and youth organizations. Part-time employment will be available to eligible youth while learning good work habits and attitudes. For more information contact the DuPage PIC/Job Training office at 682-7880.

## WEST SUBURBAN BANK

of Carol Stream / Stratford Square  
401 North Gary Avenue, Carol Stream, IL 60188 (312) 690-8700  
355 West Army Trail Road, Bloomingdale, IL 60108 (312) 351-0600

### Serving DuPage County 7 days a week

HOURS	DRIVE-UP	LOBBY
Mon. - Thurs. ....	6:45 a.m. - 7:00 p.m.	9:00 a.m. - 5:00 p.m.
Friday .....	6:45 a.m. - 8:00 p.m.	9:00 a.m. - 7:00 p.m.
Saturday .....	6:45 a.m. - 5:00 p.m.	9:00 a.m. - 1:00 p.m.
Sunday .....	10:00 a.m. - 2:00 p.m.	Closed



Where Strength is Matched by Service

MEMBER  
FDIC

# GUEST COLUMN

by Stanley E. Treitler, D.D.S., Ltd.

Many people do not realize that periodontal (gum) disease is the major cause of tooth loss in adults. This disease affects the gums, bone, and other supporting structures of the teeth. If not treated, it can cause the loss of teeth that do not even have cavities. More than half of all adults over the age of 18 have early stages of the disease, and at some point in life, three out of four adults will be affected by it.

Periodontal disease is caused by plaque, which is a sticky film of bacteria that continually forms on the teeth. Factors that can increase the risk of severity of the disease include: improper use of dental floss and toothpicks; smoking; badly aligned teeth; poorly fitting bridges or partial dentures; old defective amalgam fillings; nail biting; bruxism (clenching or grinding the teeth); poor diet; pregnancy; some systematic diseases; and some medications.

To keep your teeth and gums healthy you must take care of them:

- Brush your teeth thoroughly twice a day with fluoride toothpaste.
- Floss thoroughly every day.
- Eat a well balanced diet.
- Schedule regular dental visits.

You can help your dentist and yourself in preventing periodontal disease by watching for these warning signs:

- Bleeding gums.
- Red, swollen or tender gums.
- Gums that pull away from the teeth.
- Pus between teeth and gums.
- Loose permanent teeth.
- Bad breath.

The method of treatment of periodontal disease depends upon how advanced the disease has progressed. Treatment moderates from a thorough cleaning to the need for flap surgery. (The gum is lifted away allowing the dentist or periodontist to see and gain access to the root of the tooth for the removal of calculus, plaque, and any diseased tissues.) Usually when the disease reaches the advanced stages, your dentist will refer you to a periodontist, a dentist who specializes in the treatment of periodontal diseases.

Although periodontal disease is common, it can be prevented. In most cases it results from neglect or improper care of the mouth. You can avoid the loss of teeth by learning and practicing good oral health habits and seeing your dentist on a regular basis.

## LIONS WEEKENDER CLASSIC JUNE 8

The Bloomingdale Lions Club 9th Annual Weekender Classic Race, formerly the Half-a-Thon, will be held Sunday, June 8, starting at 8:30 am at the Springbrook Shopping Center. The route has been changed to include both 5K (3.1 mile) and 10K (6.2 mile) races over a more scenic and easier route than previous races.

Race day registration opens at 7:00 am, with Jazzercise warm-up preceding the 8:30 am start of the 5K and 10K races. A free post race party at Springbrook Shopping Center features Bud Lite Beer, Canfield's Cola, and Pioneer Pizza Hot Dogs. A drawing for donated prizes includes a Las Vegas trip from Fenc-Tufo, an Evening Tides Waterbed, membership at Killshot Racquetball Center, an Indian Lakes Resort Runaway Week-end, and many other prizes.

All registered runners will receive a Weekender Classic T-shirt and 91 Olympic style medals will be awarded the top finishers in the men's and women's age categories. The entry fee for both the race and drawing is \$7 until June 2, or \$8 thereafter. For race applications call 980-2200 or ask any Springbrook Center merchant. All proceeds will benefit the humanitarian services of the Bloomingdale Lions Club.

# Wow, have we got a bank for you.

## Household Bank

A F E D E R A L S A V I N G S B A N K

### ADDISON

Army Trail Plaza, 625 Army Trail Road  
543-5800

Green Meadows Shopping Center, 68 West Lake Street  
628-1212

### BLOOMINGDALE

261 East Lake  
894-5400

### BROADVIEW

2223 Roosevelt Road  
681-2250

### CAROL STREAM

850 West Army Trail Road  
830-4700

### SCHAUMBURG

Farmgate Shopping Center, 590 South Roselle Road  
893-4340

### WOOD DALE

Georgetown Square Shopping Center, 370 Georgetown Square  
595-4540



# DISTRICT 13 NEWS

# ABOUT TOWN

At this time of year, many of our students are taking part in local, regional, state, and even national contests. They have given us many reasons to be proud of them.

In music, Westfield's outstanding jazz band took unanimous first place ratings at the Mundelein High School Jazz Fest for the second year, with Michael Wolfe being especially commended for his individual contribution. In the annual student competition for instrumental performance, over thirty students received first place ratings, some of them on two instruments.

Our Westfield "mathletes" have also brought in honors. The seventh graders placed first in Illinois of the 16 schools taking part in the Euclidean contest, and also first in the 20 schools participating in the Pythagorean division. The team hopes to take first place again this year in the Lake Park contest in April.

Art projects from all of our schools have been on display recently at the Bloomingtondale and Roselle Libraries, and will also be on display at the Bloomingtondale Park District student art show during April.

Our students raised money earlier in the year with the MS spellathon, and all that practice was again put to use in the Chicago Tribune spelling contest recently. Our district winner, Anil Gurnaney, has the distinction of being the only student to win the contest every year that he has been at Westfield.

And speaking of raising money, watch for the sale of a unique booklet now being prepared from student writing and drawing on the subject of the Statute of Liberty. Any profits from the book will help restore "Our Lady."

Our students have also taken part in writing projects, some of which were brought to life by Child's Play Touring Theatre.

Central students shared their school day with grandparents last week, with lots of mutual satisfaction. Westfield students served breakfast to a Bloomingtondale Chamber of Commerce meeting recently. We welcome opportunities to show community members our schools. Student Career Day in April will give students a chance to see business and village careers.

Two of our residents were recently singled out for some public recognition. Though the honor each received was very different, it is interesting to note that community service was the basis of the selection in both cases.

**DORIS WHITNEY** is probably a name you have seen in the local papers recently. Whitney was named Marklund Children Home's Woman of the Year in October 1985 in recognition of her work at the Home. In addition to the thousands of hours she has spent doing hematocrit and hemoglobin tests on the children, she served as secretary on Marklund's Board of Directors for five years. Whitney is also involved with the Home Extension Unit of Bloomingtondale and it was with their help that funds were raised to buy a hematocrit machine for Marklund Home.

More recently Doris had the honor of being named the 1986 Woman of the Year at the Chicagoland awards ceremony, part of the "I Am Woman" conference held last month at the Chicago Hilton Hotel. Whitney, who spends so much time at Marklund because she "loves the babies," received the award before an audience which included Marklund Home residents as well as the staff.

Her comment as to all the fuss was "Anyone can do so much, even if retired." Doris, now 81, has been working voluntarily at Marklund Children's Home since her retirement 16 years ago.

Our second featured citizen is **CAROL NILLES**, homemaker and mother of two, who was recently named Queen of Win-

ter during the Greater Woodfield Convention and Visitors Bureau Winter Carnival. A member of the Bloomingtondale Villagers, Carol was nominated by fellow club members. Although she was honored by the nomination, she never expected to get enough points to win.

As the judging was based on service to the community it was no surprise Nilles fared so well. As the "Meals on Wheels" coordinator for Northern DuPage County, Nilles has personally made over 1,300 trips delivering meals to senior citizens in the last seven years. She is also in charge of calling volunteers, planning routes and helping senior citizens with numerous needs. Villager member Teri Fiore cites an example of Carol's concern with the seniors. "I remember one of the elderly ladies receiving hot meals asking Carol to take her to the hospital. She regarded Carol as a friend. Of course, Carol helped her out."

In addition to her many activities with the Villagers, Nilles is also a Brownie leader and very active in the schools, including serving as a hot lunch helper. As a member of Trinity Lutheran Church, Nilles has served as a Sunday School teacher for seven years, has been Church Women's Club president, Vacation Bible School coordinator, choir director, service ministry chairman and a blood drive caller.

Nilles says, "Winning was quite a surprise for me. People volunteer their time, not because they want recognition, but because they enjoy what they are doing. And I very much enjoy what I do."

## Select First United, Realtors . . . because you deserve the best in real estate service.

When you're buying or selling a home, call First United, Realtors for the best service and fastest results.

- 34 offices throughout suburban Chicagoland
- An expert sales team skilled in marketing, negotiating and financing
- Comprehensive marketing and advertising services
- Commercial/investment real estate assistance
- Real estate education

369-22 W. Army Trail Road,  
Bloomingtondale, IL  
(312) 351-7474

**FIRST UNITED,**  
REALTORS®



## 5TH ANNUAL STUDENT ART SHOW AT MUSEUM



Every Spring, the Museum is proud to present an exhibit of student art work that has been done throughout the school year. This year, beginning on April 3rd and running thru May 5th, our local schools of Central, DuJardin, Winnebago, Westfield, Lake Park and Glenbard North will be participating once again in the student art show.

The exhibit displays talent and creativity, a large variety of mediums and subject matter and is a fun show to work with and to visit. Painting, and collage, ceramics and pottery, weaving and needlework and from the older grades - photography... all provide creative avenues for students in grades Kindergarten through 12th.

The 5th Annual Student Art Show will be on display at the Bloomingdale Park District Museum from April 5th through May 3rd. There is no admission charge and we are open to the public on Tuesday 3-6, Wednesday 10-12, Thursday 3-6 and Saturday 10-3.

The Museum is located at 108 South Bloomingdale Road, across from the Post Office. Please call the Park office at 529-3650 for further information.

### COMING UP

Southern Studio Glass  
May 17th to June 14th

Quilt National '85  
June 28th to August 9th

### CAROL J. GRIER ATTORNEY AT LAW

General Family Law Practice  
including  
Wills, Real Estate,  
Tax Financial Planning

For an appointment call  
894-0666

106 Country Club Drive  
Bloomingdale, Illinois

Affiliated with Tower Financial Group, Ltd.

## BLOOMINGDALE PUBLIC LIBRARY CHILDREN'S CORNER

...Look at us... A new display case for you! - provided by the 'Friends of the Library'. Inside the glass and mirrored case there are treasures to see, all of them given by your friend Domonic Froio. Wonderful toy soldiers from many lands, hand carved wooden birds and pewter figures of children at play — what a treat!

When you come in be sure to see the children's display case, which will highlight the accomplishments of our local Girl Scout Troops.

The wall art display this month will feature work from the students of Winnebago School — really great!

...AND...

Plan to attend a story and musical feast ...on Sat., May 3 at 1 p.m. "Marita", an outstanding performer of American Folk Music, will entertain children of all ages. Marita will introduce American Folk instruments and present a program sure to enchant everyone!

...See you at the Library...



## CHESS CLUB

The Bloomingdale Public Library summer Chess Club will meet each Wednesday beginning May 7th at 3:30 in the library's meeting room.

The Chess Club is for young people who are presently in grades 3 - 8. An Inter-Library Chess Tournament will be held shortly before school starts in the fall. Bloomingdale currently holds the 1st place trophy. Help us defend our title.

Any HIGH SCHOOL STUDENTS interested in chess should contact Cheryl O'Donnell at 529-3120. A separate group will be formed if there is sufficient interest.

### CLARIFICATION

The Jewelers Bench  
in Plaza Noveau, 247 E. Lake Street,  
is owned and operated by  
Judy & Tom Nighswander  
and Lynn and Jim Jones.  
The phone number is 351-7274.

## BLOOMINGDALE STATE BANK

*3 Convenient Locations*

*13 Drive-In Lanes*

*24 Hour Banking*

*"We have a daily interest in you"*



### BLOOMINGDALE STATE BANK

114-118 East Lake Street • Bloomingdale, Illinois 60108

Phone 980-2200

GLENDALE HEIGHTS BANKING CENTER

310 East Army Trail Road

Glendale Heights, Illinois 60137

SPRINGBROOK BANKING CENTER

136 East Lake Street

Bloomington, Illinois 60108

Member FDIC

# DISTRICT 15 NEWS

by Lawrence J. Golden, District Superintendent



## JULY 4TH FESTIVAL

On Tuesday, March 11, the Marquardt School District 15 Board of Education took the opportunity to recognize the students of the Marquardt Schools who excel in the areas of literature and spelling. These students were recognized as exceptional in the development of their own original literary composition and proficiency in spelling. They were representative of all Marquardt students who participated in the annual districtwide spelling bee and Young Authors contest.

The district level spelling competition was the first step toward participation in the National Spelling Bee which will take place in Washington D.C. later this year.

The top two spellers selected to represent Marquardt School District 15 in the Chicagoland Spelling Bee were District Champ Sheila Skuraskis from Marquardt Middle School and Tim Goon from Black Hawk Elementary School. These students were selected from among the group of building winners who included: Jeff Jip Chan, Black Hawk School; Becky Brudek and Matt Pheneger, Hall School; Sandy Bell and Giang Bui, Reskin School; Kristy Kelly and Kandice Krettler, Winnebago School; and Amy Wenz, Marquardt Middle School.

As participation in the spelling bee was unfolding, another activity was focusing on District 15 students creating their own literary composition for participation in the 12th annual Young Authors contest. The Young Authors contest, like the spelling bee, involved every student in District 15. Participation in the Young Authors contest required that students write and illustrate their own composition.

Winners were selected from each school grade level and subsequently, these winners competed in a district level contest from which conference winners were selected. This year the conference representatives were announced at a Young Authors' tea which featured the awarding of certificates of merit by a local author, Alice McCleran.

The following conference winners will have the opportunity to participate in the State of Illinois Young Authors' Conference which will be held in May on the campus of Illinois State University: Tim Goon and Jeff Jip Chan, Black Hawk School; Becky Burdek, Matt Pheneger, Jennifer Stevens and Jenny Warren, Hall School; Sheila Skuraskis, Amy Wenz and Nicole Revely, Marquardt Middle School; Sandy Bell, Giang Bui and Mathew Isaac, Reskin School; and Kristy Kelly, Kandice Krettler and Brad Penar, Winnebago School.


The Board of Education, as well as the teaching staff and administration, are proud of the accomplishments of these students.

The Bloomingdale Chamber of Commerce, in conjunction with the Bloomingdale Park District is planning another spectacular 4th of July this summer. Last year's efforts were such a community success, this year's activities are being expanded into a two-day festival, July 4 and 5.

There will be rides and games for youngsters, approximately 25 local food vendors and of course, a spectacular fireworks display, which is expected to be even bigger and better this year.

Entertainment will span both days. Acts slated include the Bruise Brothers, White River Band, a 50's & 60's review, Banjo Buddies, Chuck Salvo and Tony Spavone. Also featured will be Spectrum, an 11-piece show group with music for all ages on July 4 and the New Odyssey Review on the 5th.

Make your plans to stay in town on Independence Weekend and join your neighbors in Circle Park. Festivities will begin at noon both days. Details on the weekend schedule will appear in the June issue of the ALMANAC.

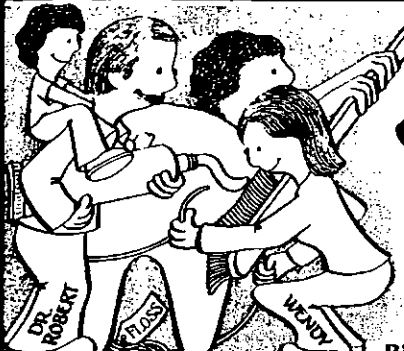


## OLD TOWN BLOOMINGDALE

A Turn of the Century Shopping Experience.

Lake Street (Hwy. 20) at Bloomingdale/Roselle Rd.  
Bloomingdale, IL (312) 980-0327

Hours:  
Monday -  
Saturday 10-5  
Sundays 12-5



## Robert Meyers, D.D.S.

DENTISTRY  
WITH CARE & CONCERN  
312-893-4650  
135 FIRST STREET  
BLOOMINGDALE, IL 60108

## MOVIE RENTAL 2 FOR 1

For \$2.00 You Receive 2 Movie Rentals Overnight  
With This Coupon (Mon. - Thurs.)

**ELECTRONICS INTERNATIONAL**  
CALL 529-6650  
211 E. LAKE ST. BLOOMINGDALE  
(1 Mile East of Bloomingdale Road)

# NEW BUSINESSES

## TEAM ASSOCIATES

Bloomington resident, Mike McCourt is in the business of getting people together. Team Associates is an executive search service for small to large companies. His local and national client companies contact Mike when they are in need of retail, marketing, management, hi-tech engineers or other special openings. Using an intricate network of referrals Mr. McCourt is able to find individuals that are just right for the company's needs.

McCort is also asked to come into companies to evaluate personnel and the jobs they are performing. In this way his client company can better utilize their personnel's skills and abilities.

If your company is in need of a person with special expertise or if your company is not performing as well as it should, Mike McCourt's Team Associates can find the right people to solve your needs. For information call 351-1656.

## MANCINI'S RESTAURANT

Mancini's, the home of authentic Italian cuisine, is one of Bloomington's newest restaurants. Located at 241 East Lake Street, the newly remodeled eatery offers a warm, casual contemporary atmosphere. The soft colors create a light mood that make dining a delight.

Owners Al Mancini, Connie DiVito, and Benny Ciccone offer a broad assortment of tasty dishes for both lunch and dinner. All dishes are made with home-made pastas, fresh seafood, and hand selected Provimi veal. To help you enjoy

your meal better, you can wet your pallet with a wine chosen from Mancini's special stock, which includes selections from some of the best Italian, French and Californian vineyards.

Treat your family and yourself to a special meal made with an authentic homemade taste. For your eating pleasure Mancini's is open Tuesday through Sunday. Drop by today or call for reservations at 980-3666.

## SHELLY'S HAIR ROOM

Shelly Stahlmann brings six years of experience with her into her new business, Shelly's Hair Room. Located in the lower level of Indian Lakes Resort Hotel, Shalmann offers hair cuts, permanents, hair coloring and manicures. She uses Nexus hair products to give your hair the best of care. Shelly prides herself in being able to give you the professional style which compliments your looks as well as your lifestyle. For an appointment or more information call Shelly's Hair Room at 529-0200 extension 113.

## "FOR EYES" OPTICAL COMPANY

One of the nation's fastest growing optical chains has opened "For Eyes" Optical Company at 355 West Army Trail Road (in the Bloomington Fashion Center). This new opening makes the 55th store to open in seven states including six in the Chicago area. The primary reason for the chain's growth is offering quality eye wear at low prices.

If you do not have a prescription, Dr. Michael Kline, optometrist, is available to give you a thorough eye examination. Currently, Dr. Kline is sharing his time between the Schaumburg and the Bloom-

ingdale stores. The doctor has office hours available in Bloomington on Tuesday and Friday. In addition to prescribing all types of adult contact and framed eye wear, he has received many referrals to fit children for glasses.

If you or your family members are in need of glasses, "For Eyes" may be the place to "look". For information or to make an appointment call 894-2401.

## HANDMADE IN ILLINOIS

Handmade in Illinois, a one-of-a-kind shop featuring handcrafts by artisans and craftsmen from throughout the state of Illinois, celebrated its grand opening in Old Town last month.

Proprietors Grayce Cochrane and Anita Miller are both craftspersons themselves and boast visiting their shop is like attending a year-round craft fair. The store showcases items similar to those found at many of the finer juried shows.

Featured items include handblown glass, completely handcrafted and carved furniture, fabric art, jewelry crafted with antique stones and off-loom weaving. Visitors will find nearly every quality craft imaginable all displayed in the homey atmosphere of the 19th century Silas Meacham Home at 126 W. Lake Street.

Most of the merchandise can be custom designed or personalized. Grayce and Anita believe once a visitor has browsed the shop, he'll be back. Stop in and see what's been "handmade in Illinois." For more information call 893-3661.



"We've been peddlin' since 1958"

The Most Unique Family Owned and Operated Business in Town.

## Econ-O-Mart

110 SOUTH RIDGE  
BLOOMINGTON, ILLINOIS 60108

529-5490

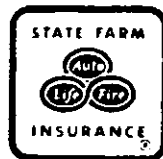
HOURS:

Mon., Tues., Thurs., 9-6 Sat. 9-6 - Sun. 12-6  
Fri. 9-9 Closed Wed.

Celebrating Our 28th Year of Service to Bloomington

"Compare with me...  
Before you pay your next  
Auto or Homeowners Premium"

**LARRY BEEMAN**  
529-0114



107 S. Bloomington Rd.  
Bloomington, IL  
60108



State Farm Insurance Companies  
Home Offices: Bloomington, Illinois

**FREE ROAD  
ATLAS**



State Farm  
Road Atlas

**STOP IN WITH YOUR PRESENT POLICY  
PICK UP YOUR COMPUTER QUOTATION AND FREE ATLAS.**

# “WHAT DO YOU THINK?”

What is the possibility of replacing a burned out light bulb right on the corner of Regency Drive and Army Trail? Seems to me that it has been out since I moved here over three years ago. Also since this is a Village street, what about placing some salt on the entrance to Army Trail? After a snow it's just about impossible to try to get eastbound on this road, versus taking your life in your own hands even when it's dry.

Gregory R. Swiertz  
203 Regency Drive

*Regency Drive is not a public street, therefore, our procedures do not include salting along Regency Drive. Also, since this is a private street, the maintenance of the street lights at that location is normally the responsibility of the property owner. We have made arrangements with our contractor to have this light repaired. Apparently, the reason for the outage is a bad underground cable which will require quite a bit more work than merely replacing a burned-out bulb.*

*Daniel C. Wennerholm  
Director of Community Services*

I would like to know why in the past 14 years that I have been a Bloomingdale resident that the Village and the Post Office have asked that the placing of mailboxes be changed. I have already moved by mailbox one time and now the Post Office and the Village are asking that it be moved again because of snow plowing equipment. This is an inconvenience to me.

Name withheld by request

*Apparently, there has been some inconsistency with regard to the instructions given by the Post Office and the Village on the distance from the back of the curb line. This has been cleared up and we now have a mutual agreement. The reason for the survey of mailbox locations was to provide proper notification to those people who had mailboxes which did not meet the required setback*

*distance, because those mailboxes were more likely to be damaged during our snow removal operations. Once a mailbox has been hit, it is very difficult to ascertain what the location was prior to the time it was hit.*

*Some residents construed our notification to be a requirement that the mailbox be relocated. This was not the case. The letter was advisory in nature and indicated that if the mailbox was hit and if it was too close to the curb, we could not be held responsible for any damages which may occur. As I'm sure you recognize there are a number of mailboxes which extend even beyond the curb line and significantly impair the ability of the snow plow trucks to clear the entire street without risk of damages.*

*Daniel C. Wennerholm  
Director of Community Services*

## WHAT'S HAPPENING AT THE PARK DISTRICT

- Pool Passes go on sale May 1st.
- T-Ball for 5/6 years will begin April 28th.
- Big Wheel Race is May 17th, register by May 16th.
- Pool opens June 9th.
- Fishing tournament, ages 6 - 15, April 19th, register by April 16th.

For more information about the above call the Park District at 529-3650.

## DUPAGE WHITE SOX — FOR OR AGAINST

Please take a moment of your time to respond on the White Sox Issue. Mail in or drop off your response to the Village Hall, 201 S. Bloomingdale Road as soon as possible. We do need your input and support.

\_\_\_\_\_ FOR

\_\_\_\_\_ AGAINST

Comments: \_\_\_\_\_

\_\_\_\_\_

\_\_\_\_\_

\_\_\_\_\_

\_\_\_\_\_

\_\_\_\_\_

Name & Address: \_\_\_\_\_  
(Optional and not for publication.)

# BLOOMINGDALE BUSINESS DIRECTORY

## ACCOUNTANTS

Schoen & Co.  
Certified Public Accountants  
125 S. Bloomingdale Road  
980-4121

## BURGLAR ALARM SYSTEMS

Slager Security Systems  
123 First Street  
529-0198  
*We Specialize in Homes & Offices*

## CARPET CLEANER

Broom Brigade, Inc. 894-4666  
Commercial & Residential Cleaning  
Carpet • Upholstery • Walls • Windows  
Furniture Touch-up & Repair

## CARPET CLEANER

Sansone Carpet, Drapery  
and Upholstery Cleaners  
215 Edgebrook Drive  
893-4010

## CHIROPRACTOR

Arlington Chiropractic Clinic  
Bloomingdale Office  
220 E. Lake Street 980-6555  
*Total Health Care Facility*

## CHIROPRACTOR

Bloomingdale Chiropractic Clinic  
Dr. James Dean  
181 S. Bloomingdale Rd.  
980-5460

## DENTIST

C.M. Khalid, D.D.S.  
Clover Leaf Towers, Suite 302  
201 E. Army Trail Road 980-5388  
Office Hours by Appt. Mon. thru Sat.

## DENTIST

Frank D. Letizia D.D.S.  
Clover Leaf Towers Suite 309  
201 E. Army Trail Road 529-0303  
*Family Dentistry*

## DENTIST

James Paradowski, D.D.S.  
255 E. Lake Street  
529-7130  
*Office Hours by Appointment*

## ELECTROLYSIS

Patricia Petsinger  
Bloomingdale Medical Center  
177 S. Bloomingdale Road  
790-2550

## EXECUTIVE SEARCH

Team Associates 351-1656  
283 Colony Green Drive  
Business Consultant  
Human Resource Consultant



## Village of Bloomingdale

201 S. BLOOMINGDALE ROAD  
BLOOMINGDALE, ILLINOIS 60108

POSTAL PATRON, LOCAL  
BLOOMINGDALE, ILLINOIS 60108

BULK RATE  
U.S. POSTAGE  
**PAID**  
Bloomingdale, IL  
60108  
Permit No. 16

## GENERAL MERCHANDISE

Econ-O-Mart  
110 Ridge Road  
529-5490  
*You're invited to browse and save.*

## HARDWARE

Springbrook Ace Home Center  
140 E. Lake Street  
894-6600  
*Largest Ace Home Center in DuPage*

## HARDWARE

Warnimont's True Value Hardware  
23 W 745 Lake Street  
529-3030  
Lawn Mower Service Center

## HOUSECLEANING

The Bucket Brigade  
289-9733  
*"Reliable, Personal Homecare"*  
*Free Estimates*

## INCOME TAX SERVICE

Behr & Co.  
Certified Public Accountants  
Tax & Financial Planners  
247 Lakeshore Lane 351-0003

## INVESTMENTS

IDS/American Express Inc.  
Personal Financial Planner  
Dorothy J. Lingeman  
359-3220 or 529-0858

## JEWELER

Lustig Jewelers *Since 1949*  
Stratford Square Mall Upper Level  
351-8900 Diamond Setting • Engraving •  
Custom Jewelry • Watch & Jewelry Repair

## MARKETING

Small Business Services  
Marketing Assistance  
Darla Moore  
529-1847

## NURSING HOME

Applewood Manor Convalescent Center  
275 Army Trail Road  
893-9616  
*"Let our family help yours"*

## NURSING HOME

Bloomingdale Pavilion Nursing Home  
311 Edgewater Drive 894-7400  
Retirement • Convalescence • Restorative  
Nursing • Rehabilitation • Intensive care

## OPTOMETRIST

Dr. Michael W. Kline  
For Eyes Optical Co. 894-5042  
366 W. Army Trail Rd.  
*Contact Lenses • Children's Vision*

## ORTHODONTIST

Dr. Clayton J. Crane  
Clover Leaf Towers Suite 309  
201 E. Army Trail Road 894-4333  
*Practice Limited to Orthodontics*

## PERIODONTIST

Stanley E. Treitler D.D.S.  
130 N. Bloomingdale Road  
893-7979  
*Practice Limited To Periodontics*

## PHARMACY

Bloomingdale Pharmacy  
Bloomingdale & Schick Roads  
980-9198 or 980-9199  
*Now Renting Video Tapes*

## PHOTOGRAPHERS

Art Craft Photographers  
First Street & Schick Road  
529-8400  
Weddings • Portraits • Invitations

## PRINTING

Budde's Print Shop  
159 West Lake Street  
894-4009  
*Let Us Make You Look Good In Print*

## SECRETARIAL SERVICE

Western DuPage Secretarial Service Inc.  
109 Fairfield Way — Suite 106  
893-9340  
Exec. Typing & Word Processing Service

## VETERINARIANS

Bloomingdale Animal Hospital  
Drs. Bormann, Olson & Page  
290 Glen Ellyn Road  
893-4330

**KEEP YOUR TAX DOLLARS  
WORKING FOR YOU!  
BUY IN BLOOMINGDALE!**