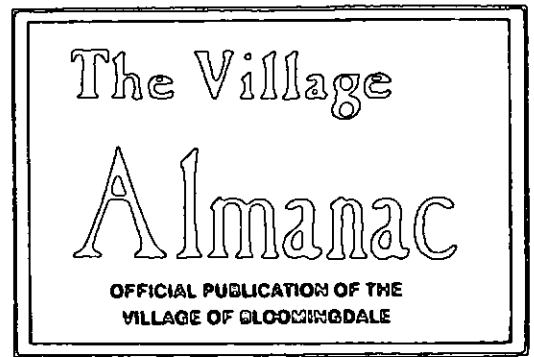


QUEEN ENTRY FORM p. 6
SEPTEMBERFEST MAP p. 7



Volume 12, Number 4

August 1987

15th Annual Septemberfest

Once again Bloomingdale proudly presents its annual Septemberfest on September 13 (rain date September 20). The festivities will begin at noon on the stage located on Franklin Street.



Part of the opening ceremonies will be the crowning of the Bloomingdale Septemberfest Queen. All young ladies who are residents of Bloomingdale and are between the ages of 15 and 21 are invited to enter. The lucky young lady and her court will receive many wonderful prizes donated by the fine Bloomingdale merchants.

Once again the official jeweler for the Queen Contest will be Lustig Jewelers of Stratford Square, donating the commemorative crown, a charm bracelet, necklace, and pendant. Many prizes are also being donated for the queen and her court by local businesses.

All entries must be in by September 1. On September 8, a pizza party will be held for all contestants, compliments of Rosati's Pizza. Judging will be held on Wednesday, September 9. See page 6 for the Queen Contest entry form.

The Septemberfest celebration this year will once again include numerous booths sponsored by local organizations, food, games, entertainment and antiques. The food booths are provided by not-for-profit organizations in town. Many fine crafts will be located along Third Street. Applications for these craftsmen will be accepted until all available spaces have been filled. No refunds on reserved spaces will be made after August 15. Call Vi Morrisroe, Septemberfest Commission Chairman, at 980-7723 for details.

Entertainment this year will be better than ever with a variety guaranteed to please all ages and interests. Mike Litteri with M&R Music will act as disc jockey and Jimmy's Bavarians will delight the audience with their oompah music. Plans are also in the works for a lip sync contest.

Of course, Septemberfest wouldn't be the same unless we had some of our traditional specials returning for yet another round of merriment. One of these, of course, is the Moonwalk for children, sponsored by Incarnation Church.

The Bloomingdale Beavers will be on hand to thrill with their gymnastic skills. For those with a thirst for reading, The Friends of the Library will be selling books and the Garden Club will have dried flowers. By popular demand, Septemberfest T-shirts will also be on sale.

In conjunction with Septemberfest the Bloomingdale Women's Club will be sponsoring its 15th annual Festival of



Arts featuring both fine arts and crafts in the Bloomingdale State Bank parking lot. Featured also will be a bake sale, Rosati's Pizza, pop, popcorn, nachos and the pocket lady for kids. Profits from these will be donated to the Bloomingdale Food Pantry and to the Women's Club's local scholarship.

No Septemberfest would be complete without the food, and there will be plenty of it. For your convenience, handicapped parking will be located at Central School, which will also have parking available for the booth people but not for the public. Lost and Found is located next to the First Aid Station, located in the Fire Department.

The Septemberfest Commission suggests you leave your car at home as this will help avoid traffic problems. Watch for more details on the big day in local papers as Septemberfest approaches. Inside this issue of the Almanac you will find a helpful map of the Septemberfest site. See you all there.

VILLAGE BOARD & COMMISSION MEETINGS

The public is encouraged to attend all Board & Commission meetings.

REGULAR MEETINGS OF THE VILLAGE BOARD

2nd and 4th Monday of every month
7:30 P.M. — Village Hall

COMMITTEE OF THE WHOLE

1st, 2nd and 4th Mondays of every month
7:30 P.M. — Village Hall

PLAN COMMISSION

1st and 3rd Tuesday of every month
8:00 P.M. — Village Hall

BOARD OF FIRE AND POLICE COMMISSIONERS

3rd Thursday of every month
7:00 P.M. — Village Hall

POLICE PENSION BOARD

Quarterly beginning in January
1st Wednesday

7:00 PM - Village Hall

E.S.D.A.

1st Tuesday of every month
7:00 P.M. — Village Hall

OLD TOWN COMMISSION

4th Tuesday of every month
8:00 P.M. — Village Hall

LIBRARY BOARD OF DIRECTORS

2nd Wednesday of every month
7:30 P.M. — Library

CHAMBER OF COMMERCE

Board of Directors Meeting
1st Thursday of every month
8:00 A.M. — Indian Lakes -
Tamarack Room

THE DEADLINE FOR THE OCTOBER ISSUE IS SEPT. 20.

VILLAGE ALMANAC
is published bi-monthly by
The Public Relations
Committee of the
Village of Bloomingdale.

Editor,
Mary Ellen Johnson - 351-1503
Production Assistant
Don Lively

Address all correspondence to:
Village of Bloomingdale
Public Relations Committee
201 S. Bloomingdale Road
Bloomingdale, IL 60108
Phone: 893-7000

MEYER PROMOTED



Rich Meyer was recently promoted to Supervisor of the Vehicle Maintenance Department. Following a stint in the U.S. Air Force, Rich went to work for a hydraulics company in Villa Park.

Rich came on board with the Village of Bloomingdale as a mechanic. He worked for a time in the Street Department, then in 1980 was named Maintenance Mechanic.

Rich is a former Bloomingdale resident as his parents moved here in 1962 and still reside in town. Rich attended Central School and Lake Park High.

He and his lovely wife Patty have two children, ages eight and six and have lived in Roselle for eight years. Rich loves to bowl and golf in his spare time.

We all congratulate Rich on his promotion and admire his hard work and dedication to seeing that our Village cars and trucks are safe and in top condition.

THE VILLAGE HALL
WILL BE CLOSED
ON SATURDAYS
DURING THE MONTHS OF
JUNE, JULY AND AUGUST.

FOSTER CARE NEEDED FOR LOCAL YOUNGSTERS

Foster homes are needed for local boys and girls aged 10-17 who need temporary, emergency foster care, not to exceed 21 days. A community-based Foster home provides a safe, caring environment that is the least disruptive to the youth's school, job, or network of support. Those individuals interested in Foster Parenting can receive more information from Kathy Thayer of Bloomingdale Township at 893-6685.

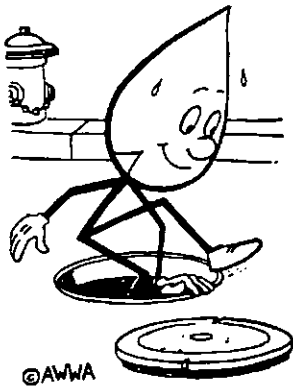
NEW CHILDREN'S LIBRARIAN

Although Phyllis Peter will be taking on two new roles at virtually the same time, the newly married and newly appointed children's librarian at the Bloomingdale Public Library will have plenty of experience to rely on as she starts her new position at the library.

Phyllis, who received her BA in English Literature from Manchester College in North Manchester, Indiana in June of 1986, completed her MLS degree at Indiana University in Bloomington, Indiana in June of 1987. She completed her practice work at the Monroe County Library in Bloomington, Indiana but has also served as a volunteer children's reference assistant at Monroe County Library. While at Indiana University she worked as a reference assistant in the university library.

Since Phyllis indicated her special interest as working with children, she seems to be well-suited for her new position. We welcome Phyllis to both our library and our community and wish her well as our new children's librarian.

Samuel J. Tenuto
VILLAGE PRESIDENT
Marie E. Tayfel
VILLAGE CLERK
Robert F. Reeves
VILLAGE ADMINISTRATOR
TRUSTEES
Biff Behr
Finance & Budget, Park District
DuPage Water Commission
Walter Cropper III
Police, Health & Safety, E.S.D.A.,
Police Pension Board
Board of Fire & Police Commissioners
RTA Services
William Horvath
Public Works,
Regionalization Committee
Robert Iden
Plan Commission, Architectural Review
Comprehensive Planning Committee
Cable TV
Sebastian J. "Buzz" Puccio
Library Board, Building & Old Town,
Old Town Commission
Paul B. Sanders
Public Relations
Public Relations Committee
Chamber of Commerce
Suburban O'Hare Commission
Community Development Commission
Greater Woodfield Visitors
& Convention Bureau



THE WATER LINE

How do I know the water my family uses is safe?

Here's a question that comes up often because of occurrences that happen world-wide where water supplies have been endangered for one reason or another.

Where your family's health is concerned, you may be interested to know that the water supply's quality is monitored throughout each month through bacteriological samples collected by water division personnel. Some of you have seen our operator collecting samples at your house. Personnel collect twenty water samples each month from different locations of the water distribution system. The water division has divided the community into sixteen sections and samples are collected from each section on three occasions in the first three weeks of every month. Raw water samples are also collected from each operating well in that sampling period. This is done so that the Village meets requirements set by the Illinois Environmental Protection Agency.

The samples are taken to a certified laboratory where results are determined. If criteria is not met, the Village is required to notify consumers through the press and/or by radio.

Because of these safeguards, you can be assured that the water you use meets the quality which everyone deserves!

We now know that samples are taken and the water is safe, but what is used to insure it remains that way?

This is a very good question, although the answer is an easy one.

In the past, water was pumped from the ground and nothing was added to insure that it was safe. Nowadays, chlorine is added to the water to protect it from disease producing bacteria from the time it leaves the well until it reaches your house tap. It is added in such a way that a certain amount of it is used to combat bacteria that may be present when it is pumped from the ground. Enough chlorine is left so that it is found throughout the water system to combat bacteria that may enter or form away from the wellhouses. Again, constant monitoring of chlorine levels insures that it's in the water supply and doing it's job!

Another benefit to you and your family is the addition of fluoride to the water you use. Although fluoride occurs naturally in ground water, in some instances levels are too low to effectively protect against tooth decay. Levels of fluoride are another requirement of the Illinois Environmental Protection Agency and guidelines are set so that meeting these insures a level ideal for protecting your teeth and health.

So smile! You can be assured that we're looking out for you and your family!

VILLAGE STAFF EXPANDED

The Village has recently taken on new employees the ALMANAC would like to introduce.

Angie Rogers was recently hired as administrative secretary to the Engineering Department. She and her husband Pat have lived in neighboring Glendale Heights since their marriage one and-a-half years ago. A 1984 graduate of the University of Wisconsin, Angie has had three years of previous secretarial experience.

The Rogers' are pet lovers and have a full house with three dogs and two ferrets. In her spare time, Angie enjoys sports, from the popular running and bicycling, to the more unusual weight lifting and jet-skiing.

Kathy Jensen has lived in neighboring Carol Stream for 10 years and has three children ages 19, 18 and 13. She has been hired as an administrative secretary for Public Works. Her experience is quite varied and includes working in the insurance, legal and printing field.

She also, for five years, ran her own calligraphy business while her kids were younger. One of the neatest jobs she ever had was to do some work for 20th Century Fox when the film "Lucas" was being filmed in Glen Ellyn. Kathy is very interested in all the new computerized equipment that today's business office has. In her spare time she enjoys sewing, art, reading and fixing things around the house.

PARK DISTRICT HAPPENINGS

SOCCER K - 8th Grades - Starts August 24 - REGISTER NOW!

FALL BROCHURES - mailed mid August

FALL PRE-SCHOOL - Register by mail by August 20 using form in brochure

FALL PROGRAMS - Register by mail by September 1st using form in brochure

FALL PROGRAMS - Begin the week of September 14th



"We've been peddlin' since 1958"

The Most Unique Family Owned and Operated Business in Town.

Econ-O-Mart

110 SOUTH RIDGE
BLOOMINGDALE, ILLINOIS 60108

529-5490

HOURS:

Mon., Tues., Thurs., 9-6 Sat. 9-6, Sun. 12-6
Fri. 9-9 Closed Wed.

We sell Benjamin Moore paint, auto supplies, pet supplies, jeans, Hoover vacuums, pool supplies and many other items.

PARK DISTRICT MUSEUM

"THE ARTIST & THE COMPUTER II"
August 22nd - September 17th

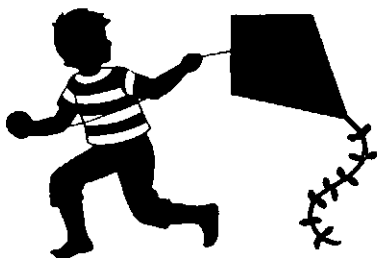


More and more, the computer and its various applications are becoming an integral part of our daily lives. It is not surprising therefore that artists should look at the capabilities of the computer and apply them to creative works.

"THE ARTIST & THE COMPUTER" contains 54 pieces of artwork in which the computer has played some part - either as a planning tool or in direct production. Prints, paintings, and sculpture will be included in the exhibition which is the second national invitational show of computer art organized by the Louisville Art Gallery. "THE ARTIST & THE COMPUTER" is partially funded by the National Endowment for the Arts. For further information, please call the Park Office at 529-3650.

Please note: for our visitors' convenience, the Museum now has new open hours! They are as follows: Wednesday 10-2, Thursday 1-5, Friday 1-7 and Saturday 10-3. The Bloomingdale Park District Museum is located at 108 South Bloomingdale Road across from the Post Office.

Don't forget Septemberfest! Bloomingdale's Annual Festival in Old Town will be on Sunday, September 13th. The Museum will be open from 11am to 6pm on that day.



LIBRARY YOUNG ADULT

Summertime has brought many young adults into the Bloomingdale Public Library to participate in the "Quest" reading program and the Chess Club. Those taking part in the reading program must read ten books in six different categories. At the end of the program, prizes will be awarded to those who have read and given an oral report on their ten books.

The YAs in the Chess Club meet each Wednesday morning. Games are played between the members regardless of their level of competency. In August a ranking of players will take place, and the club will then play in an interlibrary tournament at Lombard's Helen Plum Library. The Bloomingdale Library Chess Club won first place in last year's tournament, and the trophy is on display in the library. With the dedication the club members are exhibiting this year, the tournament should prove to be a big success once again.

CENTRAL DuPAGE HOSPITAL PHYSICIAN BEGINS NEW PRACTICE

William L. Epperly, M.D., a specialist in family medicine, recently established his new practice at Central DuPage Medical Offices at Stratford. He is also an attending physician at Central DuPage Hospital.

Trained to meet the health needs of the whole family, Dr. Epperly specializes in caring for newborns as well as octogenarians. His office is equipped to provide services from routine health screening to minor skin surgery.

Dr. Epperly, a graduate of the University of Illinois College of Medicine, completed his residency in family practice at St. Joseph Hospital in Chicago.

Keeping in mind the busy schedule of today's families, he maintains many evening and weekend hours, as well as normal daytime hours: Monday through Friday and every other Saturday. Dr. Epperly is happy to provide a free "get acquainted" visit for anyone looking for a family doctor. For an appointment, call 893-9661. Urgent problems may usually be seen the same day.

BLOOMINGDALE STATE BANK

3 Convenient Locations

13 Drive-In Lanes

24 Hour Banking

"We Are A Cash Station Location"



BLOOMINGDALE STATE BANK

114-118 East Lake Street • Bloomingdale, Illinois 60108

Phone 980-2200

GLENDALE HEIGHTS BANKING CENTER

310 East Army Trail Road

Glendale Heights, Illinois 60137

SPRINGBROOK BANKING CENTER

136 East Lake Street

Bloomington, Illinois 60108

Member FDIC

VOLUNTEERS NEEDED FOR PREVENTION PROGRAM



Bloomington Township Committee on Youth needs volunteers for the CLOWN-Together program. This unique education-prevention program uses volunteers who learn to clown and teach elementary school students how to feel good about themselves, deal with peer pressure and JUST SAY NO to drugs. The CLOWN-Together program, (Children Learning Other Ways Naturally), plans to offer a training program for new volunteers in August 1987.

Our current clowns — Binki, KoKo, Raggedy Annie, and Whisper, take time out from their roles as bookkeeper, supervisor, grandma, and counselor to convey the "JUST SAY NO" message to children in third and fourth grades. They received training for the educational program as well as training in clown costume, makeup and information about clown behavior. The volunteers enjoy their job. The children regard them with a great deal of pleasure and are open to sharing their thoughts and feelings with them. Clowns are neither adults nor children and they are generally received with a great deal of warmth by the boys and girls.

Youth need to be taught the dangers of drug use at an early age, just as they learn the dangers of touching something hot, running in the street, and playing with knives. When they grow up informed, it is easier to resist the pressures to use drugs.

In the presentation two clowns work with groups no larger than 30—usually one classroom at a time. Sitting in a circle on the floor, the children interact with the clowns and each other throughout this unique learning experience.

Bloomington Township Committee on Youth proudly sponsors the CLOWN-Together program. This service is free of charge to schools in Bloomington Township.

To arrange for an interview, or for additional information, contact Kathy Dombrowski at the Bloomington Township Committee on Youth at 893-6685.



We've got a feeling for our hometown.

We're part of the real estate system that brings more buyers and sellers together than any other. And even though the CENTURY 21® organization has become the largest home selling system in America, independently owned and operated hometown offices like ours still do it—one home at a time. Give us a call today and get the hometown advantage working for you.

Put Number 1 to work for you.

Relocating? Call 1-800-922-7653 Extension 894

Century 21
181 S. Bloomington Road
Bloomington, Illinois 60108
Business (312) 894-1900

© 1987 Century 21 Real Estate Corporation as trustee for the NAE. ® and ™ —trademarks of Century 21 Real Estate Corporation. Equal Housing Opportunity
EACH OFFICE IS INDEPENDENTLY OWNED AND OPERATED.

COTTONY MAPLE SCALE

Many inquiries have been directed to the Village Hall in regard to the problem of Cottony Maple Scale. The following information may help those residents plagued by this insect pest.

The primary host for this insect pest is the silver maple, although other soft maples, white ash, linden, willow, and honey locust trees are sometimes infested.

The major predator is the two-stabbed lady bug which is black with a red spot on each wing. Both the nymph and adult stages feed on the Scale. The nymph resembles a mealy bug.

Typically, Cottony Maple Scale will not severely harm a healthy tree.

The Morton Arboretum and the University of Illinois Extension Service advise that the process of control takes from three to five years and is in two methods:

The first method is to allow nature to supply the lady bugs which will occur naturally whenever there is the presence of Cottony Maple Scale.

The second method is to apply either Malathion or Diazinon in a spray from a hose sprayer. The application should be done on several occasions in June or July and only when the temperature is below 80 degrees.

In any case, the white shell or mass will remain for several years. You may call the University of Illinois Extension Service at 692-7485 for information on this or any other type of insect control problems you may have.

BLOOMINGDALE QUEEN CONTEST

The annual Bloomingdale Queen Contest is once again being held in conjunction with the Septemberfest celebration on September 13. The queen and her court will be presented and awarded their gifts, along with a scholarship for the queen, at the opening ceremonies on that day.

Any young lady between the ages of 15-21, who is a Bloomingdale resident, is eligible to enter. Only the first 15 applicants will be accepted and the deadline for entry is September 1, 1987. The judging will be held September 9 at 7:00 P.M. at the Village Hall. Among the judges will be leaders of the civic organizations within the community and those involved with Septemberfest.

The applicants will be judged on beauty, poise and their written response on how Bloomingdale has prepared them for adulthood, as well as why they would like to be Septemberfest Queen.

The Almanac has provided an entry blank for the contest. To obtain additional informational call Dawn Myers at 893-0784 or Vj Morrisroe at 980-7723.

VILLAGERS

The Villagers of Bloomingdale are starting off the 1987-88 year with our first meeting September third at 7:30 p.m. in the basement of the Bloomingdale Park District Building on Circle Ave. Our first meeting will feature a one-woman show. We meet the first Tuesday at 7:30 p.m. of every month September through May and everyone is welcome. Some of our future meetings are a Christmas Craft Auction, Bake Sale, and a Stress Management Class.

We've planned plenty of activities for our couples for throughout the year such as: A dinner and a musical comedy at Dry Gulch in August, a paddle boat ride down the Fox River with dancing at night in September, and a hay-ride followed by a square dance in the fall. Not to forget the Couples' Bowling, Pinochle, or International Dining Groups.

Mothers will find our childrens' play-groups a nice way of getting with other mothers while their children interact with children their own age. Mothers needing a few hours alone may enjoy joining our babysitting co-op. Children enjoy our various holiday parties and outings such as the one to Santa's Village August 12th.

We have various interest groups for the ladies such as: a book exchange, Wednesday bowling, daytime bridge, daytime crafts, a movie group, and a salad luncheon group. All groups welcome new members. Please feel free to call Cathy Gall at 980-8493 for more information.

QUEEN ENTRY FORM

I am a female resident of Bloomingdale between the ages of 15 and 21 and would like to enter the Bloomingdale Queen Contest.

Name _____

Address _____

Phone _____ School _____ Age _____

I have attached a handwritten letter of 150-250 words, in which I have given an introduction to myself and have stated my feelings about how Bloomingdale has prepared me for adulthood and why I would like to be its Festival Queen.

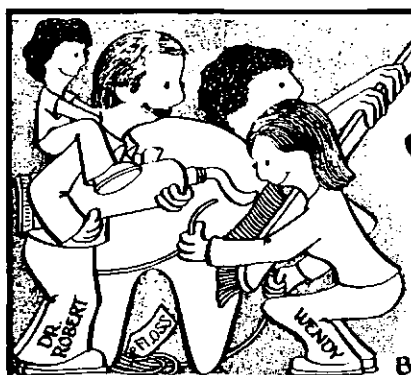
**APPLICATIONS MUST BE POSTMARKED NO LATER THAN
SEPTEMBER 1, 1987**

**Please Note: Only the First Fifteen Postmarked Applications
Will Be Accepted.**

Mail Applications To:

**Bloomingdale Queen Contest
254 Bedford Lane
Bloomington, IL 60108**

Judging is September 9, 1987 and coronation is at Septemberfest September 13, 1987.



**Robert
Meyers,
D.D.S.**

DENTISTRY
WITH CARE & CONCERN
312-893-4650
135 FIRST STREET
BLOOMINGDALE, IL 60108

CAROL J. GRIER ATTORNEY AT LAW

General Family Law Practice
including
Wills, Real Estate,
Tax, Financial Planning

For an appointment call
894-0666

106 Country Club Drive
Bloomington, Illinois

Affiliated with Tower Financial Group, Ltd.

FESTIVAL OF ARTS

COME ONE, COME ALL —To the Bloomingdale Women's Club 15th annual Festival of Arts Fair on Sunday, September 13, 1987. There will be a beautiful variety of original works of art and crafts displayed for all to see and purchase. The Festival location is at the Bloomingdale State Bank parking lot (main banking facility).

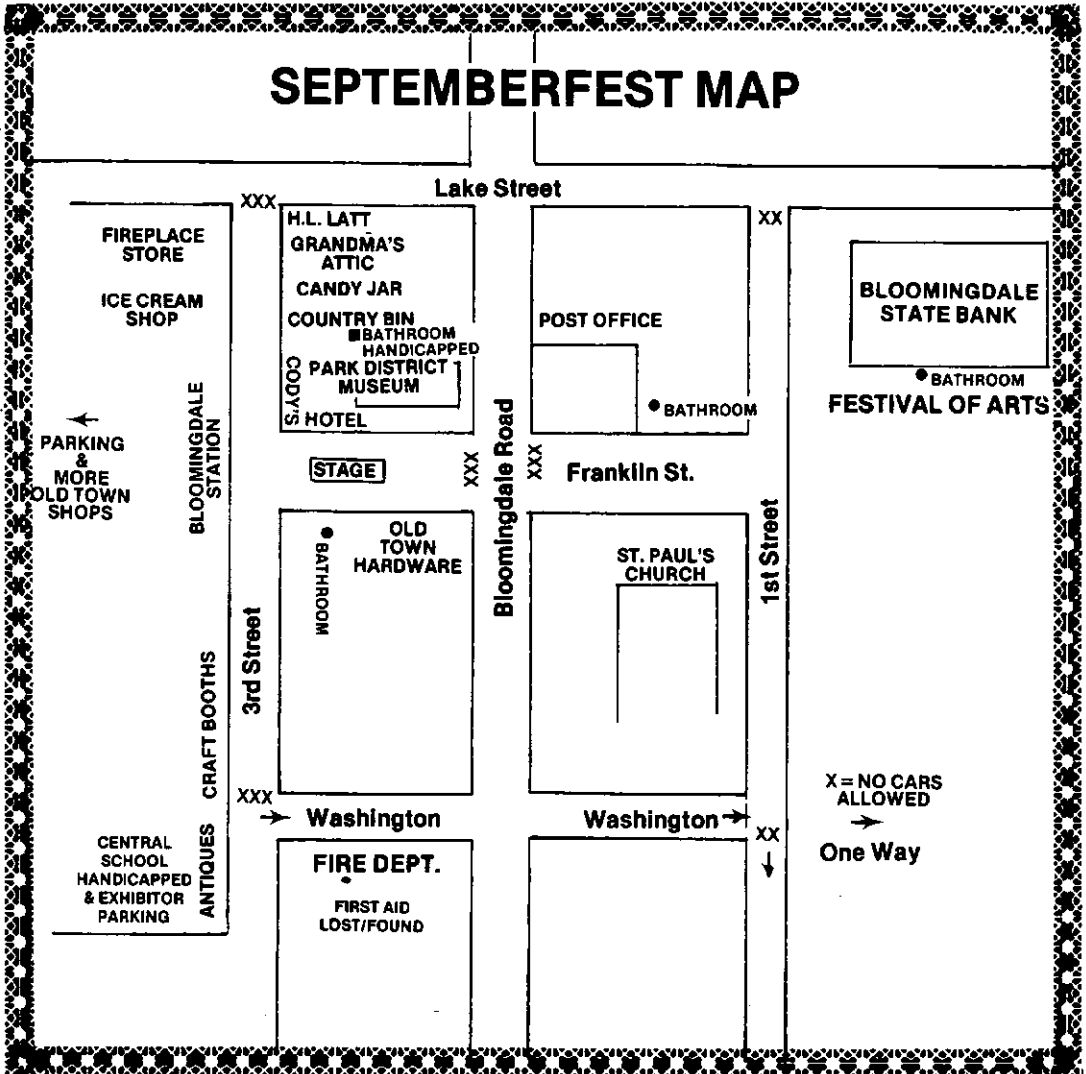
The Festival will once again be held in conjunction with the Septemberfest activities. As well as crafts and fine arts on hand, the BWC will also sponsor a bake sale. There will be plenty of refreshments including Rosati's cheese pizza, pop, popcorn, and delicious nachos.

All proceeds of the Festival of Arts Fair will be donated to the Bloomingdale Food Pantry.

All in all a fun day is guaranteed! So mark the date on your calendar now — September 13, 1987. Looking forward to seeing you there!

PAT CHANLEY FUND

On May 30, 1987, Pat Chanley retired from her position as the Children's Librarian of the Bloomingdale Public Library. To honor her, a Pat Chanley Book Fund has been established. This Fund will be used to purchase children's books for the library. If you would like to contribute to this Fund, please send or deliver donations to the Bloomingdale Public Library, 101 Fairfield Way, Bloomingdale, IL 60108.



Six-year old Jessica Johnson visits with Children's Librarian Pat Chanley for the last time.



Mayor Tenuto bids farewell to a one-of-a-kind lady.

CENTURY RENTAL CENTER

RENT MOST ANYTHING!

TRAILERS

TRUCKS

CONSTRUCTION

HOMEOWNERS

MAINTENANCE

INDUSTRY

PARTY

260-9779

4N350 GARY AVE.
DIV. OF BRACING SYSTEMS, INC.

HOURS

MON - FRI 7:30 - 5 PM
SAT 8 AM - 4 PM
OPEN SUNDAY

GARY AVENUE
ONE BLOCK SOUTH OF
ARMY TRAIL RD.

BLOOMINGDALE RD

B.W.C. "BECAUSE WE CARE"

_____ About our families _____ About the community
_____ About each other _____ About you!

Do you care? Join the Bloomingdale Women's Club.

Sorry not for me

Not enough time We can use the time you have. No amount is too small.

I work Many of our members do. Our meetings are at night.

My kids are too small Did you know we have Mom and children's outings, a Easter Egg Hunt?

I don't know anyone Bring a friend with you, or make one at one of our meetings.

We are an organization of local women who work for our community.

Do we give? Yes, but we also get back in full through friendship, personal growth, and the satisfaction of seeing our combined efforts benefit others.

Do we have fun? YES! It's not all work. We have many social activities including bowling, couple's activities, sports outings and luncheons.

Who belongs to Women's Club? That's easy — homemakers, career women, married, single, divorced, young and aging gracefully. You have seen us at the Fashion Show, Festival of Arts, and Christmas Auction.

We are changing. We are a club for everyone!

Have we convinced you? Please give us a try. You just might find more than you expected. Please come to our first meeting. Thursday, September 10, at 7:30 p.m. in the Bloomingdale Public Library. The remainder of our meetings are held on the second Thursday of each month.

For more information or answers, call Lynne 980-5078.

INDIAN LAKES RESORT RENOVATION

Indian Lakes Resort is completing a multi-million dollar renovation of all guest rooms, restaurants, lounges, meeting/banquet rooms and public areas.

A combination of contemporary American Indian designs and elegant, warm architectural elements are incorporated into the guest rooms and atrium lobby, with coordinated variations in the restaurants and lounges. "On The Pond", a newly created restaurant and accompanying lounge, blends soothing desert colors and textures with the serene view of a surrounding pond and fountain.

A new lounge, appropriately named "Waves", offers dramatic waterlevel views, entertainment and dancing. The sunlit atrium has also been redesigned to include a spacious dining setting in addition to the atmospheric Cave Bar.

The award-winning Indian Lakes Resort is set on 260 private acres with two 18-hole championship golf courses, luxury accommodations, 28 meeting/banquet rooms, 7 dining and lounge options, complete meeting services and vacation packages.

Whiz Quiz

A rose by any other name . . .

The twenty famous (or infamous) people noted below are known to everyone — by name. But not one is a true name.

Sharpen your pencil and see how many true names you can put down:
1 — Fred Astaire, 2 — Adolf Hitler, 3 — John Wayne, 4 — Mark Twain, 5 — Cary Grant, 6 — Marilyn Monroe, 7 — Billy the Kid, 8 — Jerry Lewis, 9 — O. Henry, 10 — Lucille Ball, 11 — Woody Allen, 12 — Harry Houdini, 13 — Doris Day, 14 — Tony Curtis, 15 — Roy Rogers, 16 — Nikolai Lenin, 17 — Sophia Loren, 18 — Jack Benny, 19 — Judy Garland, 20 — Eddie Cantor.

ANSWERS

1 — Frederick Austerlitz, 2 — Adolf Schickgruber, 3 — Marion Morrison, 4 — Samuel Clemens, 5 — Archibald Leach, 6 — Norma Jean Baker, 7 — Henry McCarty, 8 — Joseph Levitch, 9 — William Sidney Porter, 10 — Diane Belmont, 11 — Allen Konigsberg, 12 — Erich Weiss, 13 — Doris Kapelhoff, 14 — Bernie Schwartz, 15 — Leonard Slye, 16 — Vladimir Illich Ulyanov, 17 — Sofia Scicolone, 18 — Ben-Kubelsky, 19 — Frances Gumm, 20 — Izzie Itzkowitz.



OLD TOWN BLOOMINGDALE.

Visit Old Town Bloomingdale for a Turn of the Century Shopping Experience

Directions:

1 block southwest
intersection of Lake St.
and Bloomingdale Rd.

Center Hours:

Weekdays 10 - 5
Saturdays 10 - 5
Sundays 12 - 5

For More Information Call (312) 980-0327

- Fine quality merchandise
- Variety of unique foods
- Array of specialty products and services
- All in over 40 quaint shops

ON THE POND

An American Restaurant

A new restaurant at Indian Lakes has opened with a menu reflecting the best of the diversified American cuisine. Overlooking the pond, of course, this tranquil setting is a perfect place for lunch or an elegant dinner. The dinner menu includes appetizers such as Carpaccio with Enoki Mushrooms, Shellfish Casablanca and Mesquite-grilled Capon. A delicious Shrimp and Lobster Bisque or the Wild Mushroom Oxtail Beef Consomme compliment the variety of fresh salads. Dinner entrees include Veal and Lobster Medallions, Cajon-style Blackened Bass, and Mesquite-grilled selections such as Salmon Florentine, Swordfish Teriyaki and New York Strip Steak.

The luncheon menu will tempt you with appetizers of Tri-Color Pasta, Crab Cakes, Brie en Croute or Baked French Onion Soup with Gruyere Cheese. Luncheon salads include a delightful spinach salad with baby shrimp, avocado, Maui onions and black olives tossed with herb dressing, as well as the Tivoli Garden Salad with fresh fruits and berries, and the American Salad with Beefsteak tomatoes, Romaine leaves and Maui onions. Shrimp Linguini, Cajun Chicken Breast, Baked Orange Roughy and a Mesquite-grilled Filet Mignonette are a few of the luncheon entrees.

ON-THE-POND also includes a totally new lounge with beautiful views, all new decor and furnishings, and popular music to create the perfect atmosphere for romantic evenings or casual conversation.

YWCA FOSTERS DWAR

DuPage Women Against Rape, the volunteer component of the YWCA's Sexual Assault Services, is actively seeking volunteers for its 24-hour hotline, hospital and legal advocacy programs and its county-wide sexual assault prevention programs. Training for these positions will begin on October 3 and run for six weeks, followed by a "Crisis Intervention Weekend" for sharpening skills.

Kathy Glowienke, coordinator of the Child Assault Prevention program (CAP) stressed the need for more help, especially in working with preschool children. "We are already booking a lot of schools for next year and need more CAP leaders. It's perfect for moms with school-age children because we work school hours!" Karen Preston, coordinator of STOPRAPE (the high school acquaintance rape program) echoed Kathy. "The more presenters we have, the more children we can reach with this important message."

DWAR training is a highly intensive 30-hour course examining the social, psychological and legal aspects of sexual assault, its prevention and treatment. Class sessions address the development of the Rape Crisis Center movement, societal factors which contribute to sexual assault, common myths about rape, victim and offender profiles, psychological reactions of victims and those close to victims, the Rape Trauma Syndrome, prevention strategies, self defense techniques, treatment for victims, investigatory and court procedures and assisting the victim in crisis.

For further information about DuPage Women Against Rape, their services and the training, call 629-0170.

The 24-hour hotline number is 971-DWAR.

OPINION FEATURES

This is the third time I am writing to you about the complete disregard of the speed limit on Lakeshore Lane. Cars are speeding through here at reckless speeds and I just cannot get anything done about it. I have lived here for 15 years and have never seen anyone issued a ticket for speeding. I hope something is done about this before a tragedy occurs.

Lad Matias
219 Lakeshore Lane

I have assigned Directed Patrol units to monitor this area, especially during morning and evening rush hours. Hopefully, we can identify the offenders and remedy the problem. Any information about habitual offenders we can get from residents in your area would also be most helpful as direct contacts can then be made with the offenders by our police department.

Gary J. Schira
Chief of Police

What can be done about youngsters playing their music so loud outside (usually while playing basketball in their driveway) that we must close our doors and windows to hear our own TV? Also, will the new sidewalk on Bloomingdale between Greenway and the library ever be extended?

Mrs. Jack Bucalo
315 Surrey Lane

The Village does have an ordinance controlling the generation of noise within Village limits. It can be enforced upon neighbors playing music to the extent that it is disruptive to the neighborhood. If this situation continues to occur, it would be appropriate for you to contact the Village Police Department which does accept anonymous complaints.

In regard to the sidewalk, there are no plans currently to extend the walk, either south toward Whitman Drive, nor north past the Glen Ellyn Clinic property.

Daniel C. Wennerholm
Director Community Services


**"Compare with me...
Before you pay your next
Auto or Homeowners Premium"**

LARRY BEEMAN
529-0114

STATE FARM
107 S. Bloomingdale Rd.
Bloomingdale, IL
60108

State Farm Insurance Companies
Home Offices: Bloomington, Illinois

**FREE ROAD
ATLAS**



State Farm
Road Atlas

STOP IN WITH YOUR PRESENT POLICY

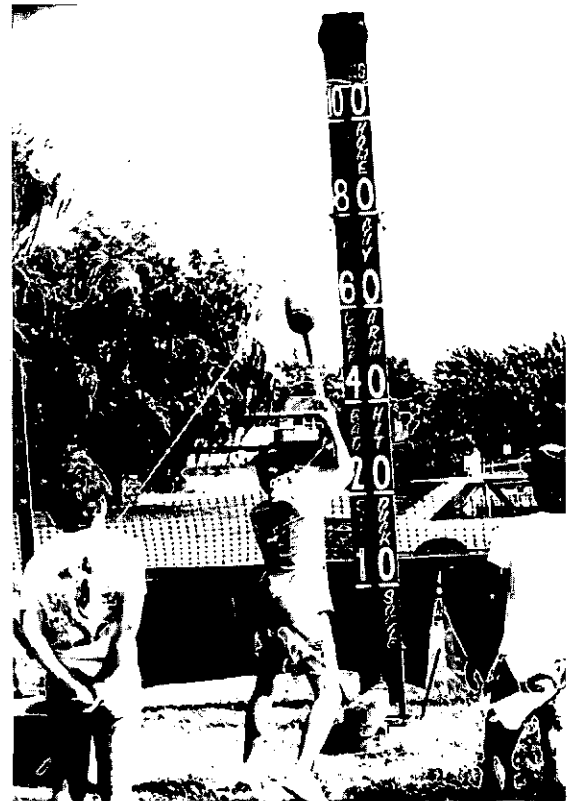
PICK UP YOUR COMPUTER QUOTATION AND FREE ATLAS.

MANY THANKS FOR A GREAT FOURTH

The two-day July 4th celebration sponsored by the Bloomingdale Chamber of Commerce in Circle Park was all that was promised, and then some. The kids loved the games and rides, but especially Bozo; the food and wide variety of entertainment were outstanding.

Many thanks go to Paul Paoletti and Bill Beutin, co-chairmen and to their committee members: Jim Luberda, Gary Schira, Rae Novak, Joyce LaSalvia, Dale Doepke and executive secretary Richa Wennerholm.

Special mention also goes to Dennis Szafran, Public Works Superintendent, and his crew and to the members of the Bloomingdale Police Department. Without their help, the celebration could not have run so smoothly. Thank you also to the Bloomingdale Park District for use of the park and for the fabulous fireworks display on July 4.

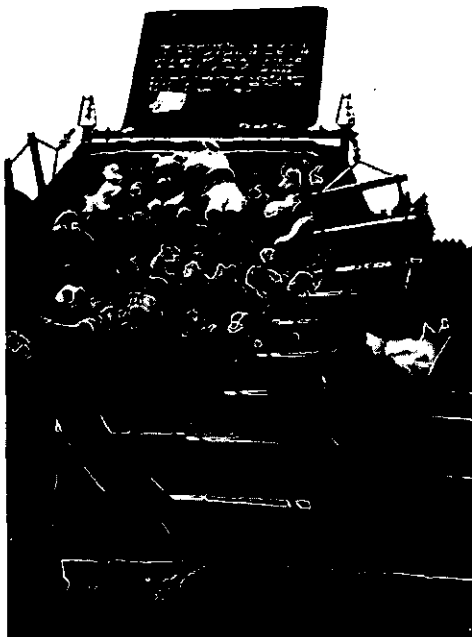
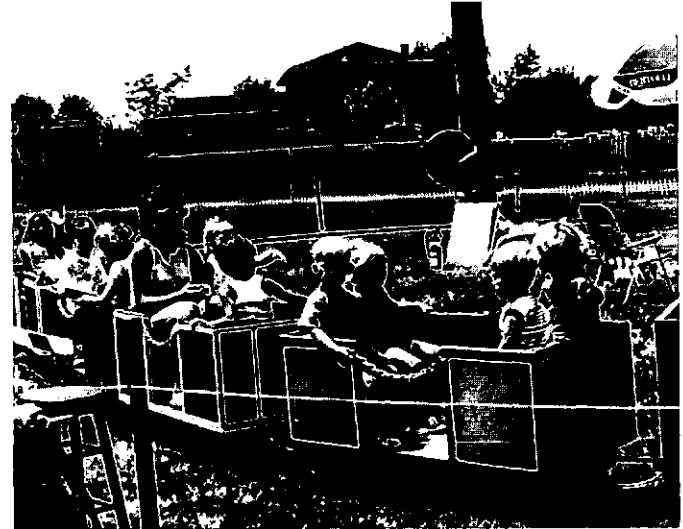


The Chamber also wishes to publicly acknowledge and thank the following for their generous support of the third annual Great American 4th of July Festival.

BUDWEISER
ADVANCED SYSTEMS
APPLICATIONS, INC.
CALIFORNIA COOLER
VILLAGE OF BLOOMINGDALE
PENNY WISE PUBLICATIONS
SZATKOWSKI, GRYZLO,
MACKENBACH &
WODNIAK, LTD.
PRESS PUBLICATIONS
PEPSI
JOHN TUFO CHEVY CITY
WESTLAKE GRAPHICS
PAUL PAOLETTI, LTD.
ECONOMART
KEN MURPHY & ASSOCIATES

DESIGNER DESK
1ST NATIONAL BANK
OF ROSELLE
DAILY HERALD
PAULI'S STANDARD
TLC GIFTS
INDIAN LAKES RESORT
FENTON PRESS, INC.
WEST SUBURBAN BANK
CENTURY 21 CAMELOT
JIM LUBERDA
GLENDALE HEIGHTS
COMMUNITY HOSPITAL
ALLTEMP FIREPLACE, INC.
KILLSHOT
CECCHIN PLUMBING & HEATING

VOICE NEWSPAPER
BROWNING-FERRIS
INDUSTRIES
METROVISION OF DUPAGE
GRABER CONCRETE PIPE
HOUSEHOLD BANK
EILEEN SCIACKITANO
ABBOTT & ASSOCIATES
BLOOMINGDALE STATE BANK
TONY'S ITALIAN DELI
WILLIAM J. BEUTIN
MARK MORAND
NATIONAL GRAPHIC SALES
LUKAS BUILDERS, CONTRACTORS, INC.
GEORGE H. KING
GARY J. SCHIRA





WSB WEST SUBURBAN BANK
of Carol Stream / Stratford Square

355 West Army Trail Road, Bloomingdale, IL 60108 351-0600
 401 North Gary Avenue, Carol Stream, IL 60188 690-8700
 1657 Bloomingdale Road, Glendale Heights, IL 60139 690-8600
 1061 West Stearns Road, Bartlett, IL 60103 830-5330

Serving DuPage County 7 days a week

	HOURS	DRIVE-UP	LOBBY
Mon. - Fri.	6:45 a.m. - 8:00 p.m.	8:30 a.m. - 9:00 p.m.	
Saturday	6:45 a.m. - 5:00 p.m.	8:30 a.m. - 5:00 p.m.	
Sunday	10:00 a.m. - 2:00 p.m.		Closed

 **Where Strength is Matched by Service** 

BLOOMINGDALE BUSINESS DIRECTORY



Village of Bloomingdale
201 S. BLOOMINGDALE ROAD
BLOOMINGDALE, ILLINOIS 60108

BULK RATE
U.S. POSTAGE
PAID
Bloomingdale, IL
60108
Permit No. 16

POSTAL PATRON, LOCAL
BLOOMINGDALE, ILLINOIS 60108

ACCOUNTANTS

Schoen & Co.
Certified Public Accountants
127 E. Lake Street
980-4121

AIR CONDITIONING

Sunrise Temperature Service
4N240 Cavalry
894-3130
Residential & Commercial Service & Sales

ALARMS

Chicago Metro Alarm, Inc.
Residential - Commercial - Industrial
117 W. Lake Street 894-4700
Burglar • Fire Alarm • Medical Alert

CARPET CLEANER

Sansone Carpet, Drapery
and Upholstery Cleaners
215 Edgebrook Drive
893-4010

CHIROPRACTOR

Arlington Chiropractic Clinic
Bloomingdale Office
220 E. Lake Street 980-6555
Total Health Care Facility

CHIROPRACTOR

Bloomingdale Chiropractic Clinic
Dr. James Dean 980-5460
274 Town Center Drive
Crisell Professional Center

DENTIST

Frank D. Letizia D.D.S.
Clover Leaf Towers Suite 309
201 E. Army Trail Road 529-0303
Family Dentistry

DENTIST

James D. Paradowski, D.D.S.
290 S. Springfield Drive, Suite 180
529-7130
Office Hours by Appointment

ELECTROLYSIS

Patricia Petsinger
Bloomingdale Medical Center
177 S. Bloomingdale Road
790-2550

GENERAL MERCHANDISE

Econ-O-Mart
110 Ridge Road 529-5490
Come in and see our wide selection of
pool and garden supplies.

HARDWARE

Olson's Springbrook Ace
140 E. Lake Street 894-6600
Serving Communities for 39 years.
"WE ARE HARDWARE!"

HOUSECLEANING

Sweeping Beauties /
289-9733
"Reliable, Personal Homecare"
Free Estimates

INCOME TAX SERVICE

Behr & Co.
Certified Public Accountants
Tax & Financial Planners
109 Fairfield Way 351-0003

INVESTMENTS

IDS/American Express Inc.
Personal Financial Planner
Dorothy J. Lingeman
359-3220 or 529-0858

JEWELER

Lustig Jewelers Since 1949
Stratford Square Mall Upper Level
351-8900 Diamond Setting • Engraving •
Custom Jewelry • Watch & Jewelry Repair

MARKETING

Small Business Services
Marketing Assistance
Darla Moore
529-1847

NURSERY

Platt Hill Nursery
222 W. Lake Street
529-9394
A COMPLETE GARDEN CENTER

**KEEP YOUR TAX DOLLARS
WORKING FOR YOU!
BUY IN BLOOMINGDALE!**



NURSING HOME

Bloomingdale Pavilion Nursing Home
311 Edgewater Drive 894-7400
Retirement • Convalescence • Restorative
Nursing • Rehabilitation • Intensive Care

OFFICE SUPPLIES

Bloomingdale Office Supplies, Inc.
185 E. Lake Street 529-9126
Conventional & Electronic
Visa & MasterCard Accepted

ORTHODONTIST

Dr. Clayton J. Crane
Clover Leaf Towers Suite 302
201 E. Army Trail Road 894-4333
Practice Limited to Orthodontics

PERIODONTIST

Stanley E. Treitler D.D.S.
Terry M. Sandroff D.D.S. M.S.
130 N. Bloomingdale Road 893-7979
Practice Limited to Periodontics

PET SANCTUARY

Pet Rescue
151 N. Bloomingdale Road
893-0030
250 Pets For Adoption

PHARMACY

Bloomingdale Pharmacy
Bloomingdale & Schick Roads
980-9198 or 980-9199
Hospital Equipment For Rent

PHOTOGRAPHERS

Art Craft Photographers
First Street & Schick Road
529-8400
Weddings • Portraits • Invitations

PRINTING

Budde's Print Shop
159 West Lake Street
894-4009
Let Us Make You Look Good In Print

PSYCHOLOGISTS

Counseling: Individ. • Family • Child • Group
Hypnosis • Medication • Religious • Biofeed
Clinical Psychology Associates, P.C.
125 So. Bloomingdale Rd. 893-3350

VETERINARIANS

Bloomingdale Animal Hospital
Drs. Olson, Page and McCormack
290 Glen Eilyn Road
893-4330

THE DEADLINE FOR THE
OCTOBER ISSUE IS
SEPTEMBER 20.