

Village Fall 2003 Special Edition

Fall branch pickup October 20-24; see page 2



Village of Bloomingdale

Almanac

SPECIAL EDITION

Fall 2003

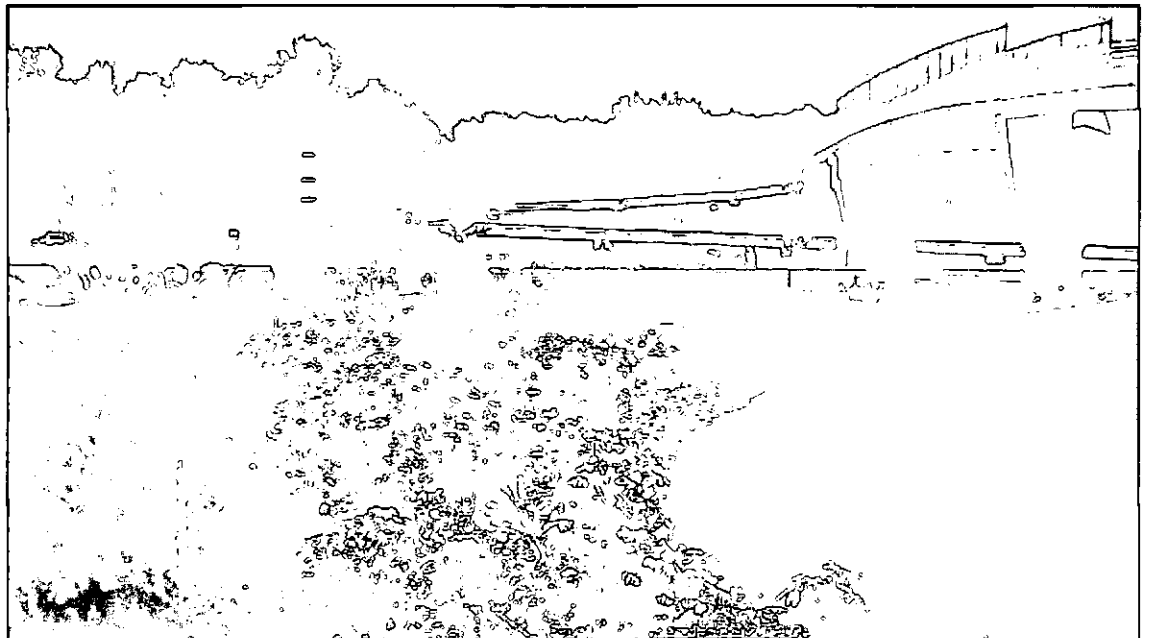
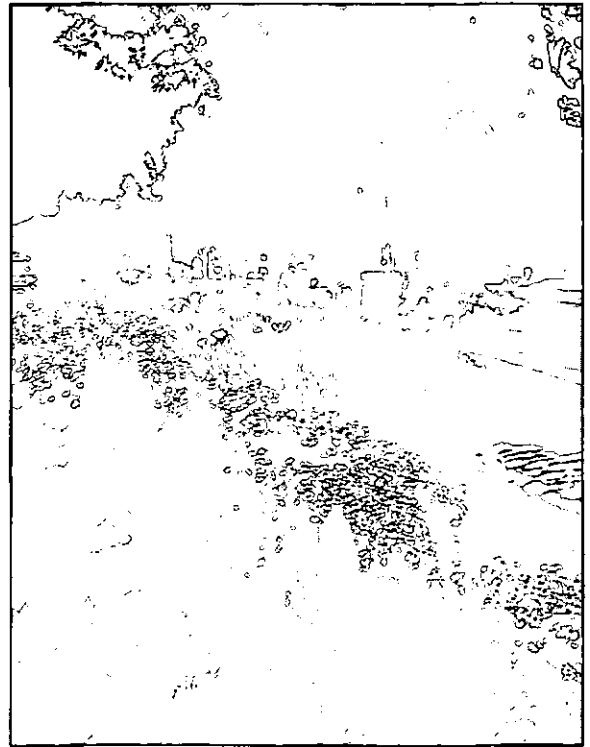
Bloomingdale is in Full Summer Bloom!

If you have driven along Schick Road any-time this summer, you have been treated to a "fireworks display" of flowers with colors exploding everywhere.

The landscape pictured to the right is in front of Indian Lakes Resort and is part of the Village's streetscape beautification program. This particular section was a collaboration between the Village and Indian Lakes.

Also pictured is a view from William Way near the Lake Street Community Trail Bridge.

The beautification program is being continued along Schick Road, as well as along other arterial and collector streets within the Village.



Fall Branch Pickup Week Set for October 20-24

The summer branch collection was a great success. For the first time, the Village opted to hire a contractor, rather than use our own manpower to complete the task. Kramer Tree Specialists, Inc. working under the direction of the Village Forestry Division, did the job. With this new program, the branch collection is done during a one-week period. The fall collection week is October 20th through October 24th. Residents are encouraged to complete tree and shrub pruning in the preceding week.

This program is only available to single family detached residences. Residents of townhomes should contact their association regarding branch collection.

The following guidelines are provided to ensure a quick and efficient pick-up program:

- Branches must be out by 7:00 a.m. on Monday, October 20th.
- Woody branches 1/2 inch to 6 inches in diameter are the only items that will be picked up. (Note: any spikes, hooks or other metal objects must be removed).
- Long lengths are favored provided branches do not block sidewalks and pedestrian access.
- All branches should be placed at the curb or pavement edge and stacked in an orderly fashion with the cut or larger end towards the pavement.
- Thorny tree branches should not be concealed inside piles. These require special care as to not cause injuries to the workers.

The following items are unacceptable:

- Branches left out in a tangled mess.
- Woody branches under 1/2 inch in diameter.
- Leaves, vines, small (under 1/2 inch in diameter) flexible willow stems, herbaceous plants and weeds.
- Large stumps, roots and root balls.*
- Wooden fencing and construction lumber.*

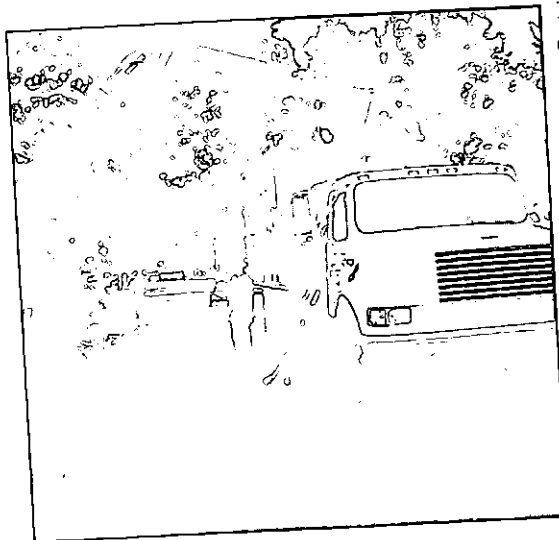
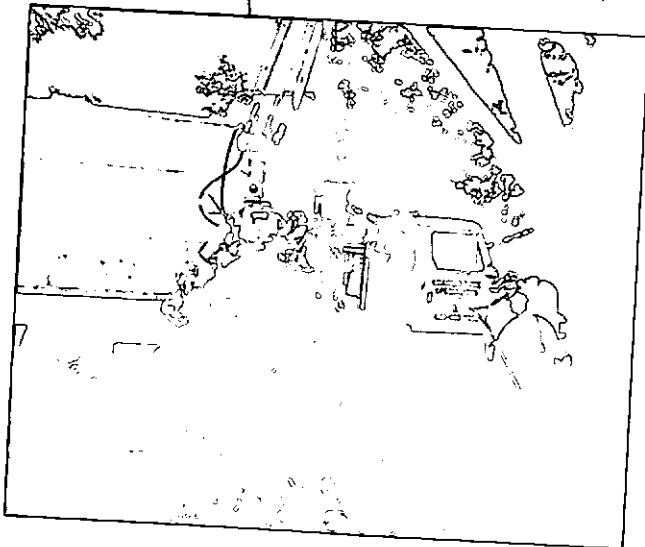
The above items are considered yard waste and may be placed in bags or cans with tags for Browning Ferris Industries pick-up (our refuse hauler). BFI yard waste pick-ups commence April 1st and continue through November 30th. Questions concerning BFI pick-ups should be directed to 847-429-7370.

*Large stumps, roots and root balls are considered trash and do not require a yard waste tag, provided each item is of manageable size and under 50 pounds. Wooden fencing and construction lumber are also considered trash, but require a special pick-up. Contact BFI at (847) 429-7370 for more information.

In the event of severe storms, the Village will provide storm damage collection of woody branches

1/2 inch to 6 inches in diameter. Please contact the Forestry Division at 630-671-5800 within 72 hours of storm for branch collection.

Your cooperation is greatly appreciated and will ensure a successful program.



Love Our Country . . . Respect Our Flag . . .

Thanks to the Bloomingdale VFW Post 7539, our Public Works Division, and the Westfield Middle School Student Council, we now have a drop box for damaged and/or old American flags. It is located on the north side of the gazebo at Bloomingdale Road and Fairfield Way, which is right in front of the Bloomingdale Public Library.

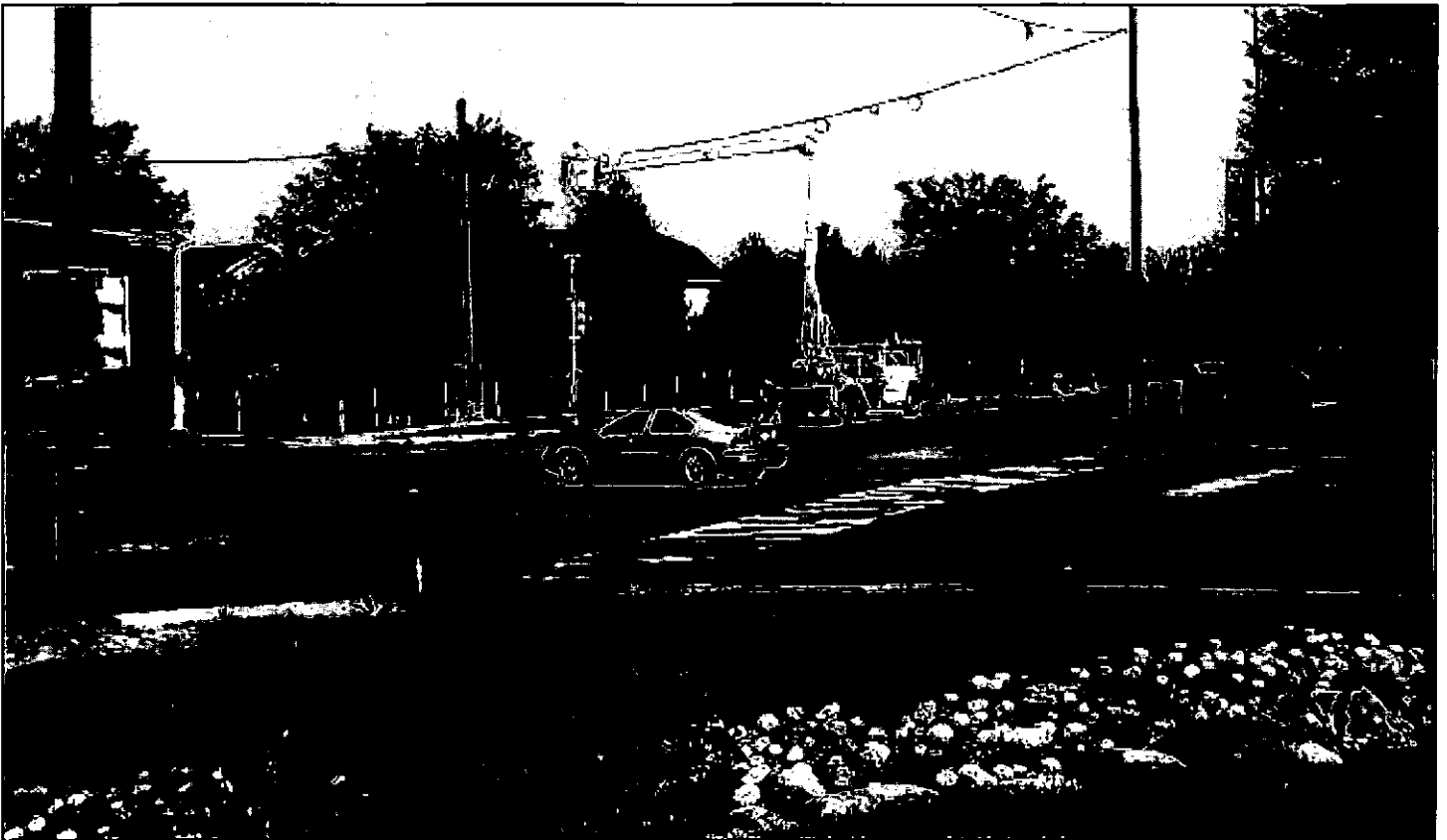
The VFW will collect flags deposited there and dispose of them properly.

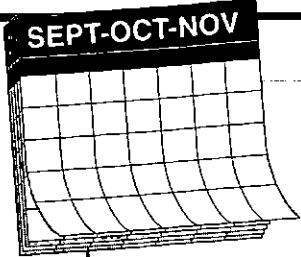


Schick Road/Springfield Drive Construction Work Now Underway

Construction work at the intersection of Schick Road/Springfield Drive has begun. The work includes the construction of left turn lanes for both northbound and southbound Springfield Drive, as well as a traffic signal upgrade to provide dedicated left-turn arrows for both Schick and Springfield traffic. The scheduled completion of this highly anticipated construction project is November 25, 2003. During the project motorists can expect delays caused by lane closures.

Direct any questions regarding the project to the Village Services Department - Engineering Division at 630-671-5676. Your patience is appreciated.





Garden Calendar

- Divide perennial plants.
- Fall is a great time to prepare a new flowerbed. Turn soil and amend if necessary.
- Plant hardy spring flowering bulbs until the ground freezes.
- Rake fallen leaves. Compost the leaves or shred them with lawn mower and use as mulch.
Note: Leaves, fruit, and twigs from trees and shrubs which experienced a fungal disease this season should be raked and discarded to prevent re-infection next year.
- Continue to mow lawn; repair and seed bare spots. Early fall is the ideal time for lawn repairs. Check out lawn care information at the University of Illinois Extension web site, www.urbanext.uiuc.edu.
- Visit the Chicago Botanic Garden in Glencoe or The Morton Arboretum in Lisle to experience fall color. Check out the Miracle of Fall web site at www.urbanext.uiuc.edu/fallcolor.

Leaf Collection Options: Leave Them at the Curb in Bags or Cans

The Village does not provide leaf pick-up services. Blowing or raking leaves into the street is a violation of the Comprehensive Code of Village of Bloomingdale – Chapter 9 Section 142.

Browning Ferris Industries (BFI) will pick up leaves and other yard waste on regular trash pick-up days from *April 1st through November 30th*. Leaves must be placed in biodegradable paper bags or cans (with handles), each affixed with a yard waste sticker (\$1.35 per sticker). Weight limit of each bag or can is 50 pounds.

BFI does pick up some brush. It must meet the following requirements:

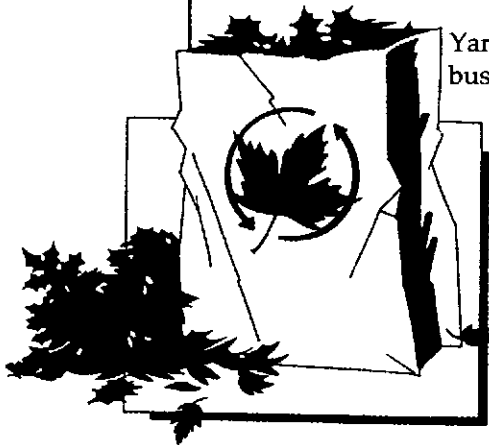
- Brush must be no longer than 4 feet in length.
- The largest branch must be no more than four inches in diameter.
- Brush must be bundled in bundles weighing no more than 50 lbs. and have a yard waste sticker attached to ensure pickup.

For information on Fall Branch Pick-up, see page 2.

Yard waste stickers are available at the Village Hall or at the following local businesses:

- Bloomingdale Pharmacy, 156 S. Bloomingdale Road
- Butera Foods, 550 Lake Roselle
- Dominicks, 325 Army Trail, Glendale Heights
- Dominicks, 144 S Gary, Bloomingdale
- Jewel, 2164 Bloomingdale Road, Glendale Heights
- Village of Bloomingdale, 201 S Bloomingdale Road

Stickers can also be purchased directly from BFI by calling (847) 429-7370.



Fall Hydrant Flushing Begins October 7

The Village Services - Utilities Division will be performing the annual Hydrant Flushing Program beginning October 7, 2003 through October 30, 2003. The Program will be performed during the daytime hours of 9:00 am - 2:00 pm. Please DO NOT WASH LAUNDRY during the flushing hours, as rust staining of the clothing may result. Residents with water softeners are encouraged to check the cycle time of their softeners so that the unit does not regenerate during this period.

One question that is always asked is - "Why does the Village flush hydrants?" Hydrant flushing is routine maintenance for a water system. It accomplishes the following:

1. Improves water quality: Flushing removes minerals such as iron and magnesium that have collected in the water mains.
2. Improves water flow: By removing these minerals, the inside diameter of a water main is increased and therefore, allows a better flow of water.
3. Hydrant maintenance: A fire hydrant is a mechanical device. Operation of a hydrant lubricates internal mechanisms and gaskets.
4. Hydrant inspection: Any deficiencies are noted and repaired as necessary to insure that each hydrant will perform when needed for an emergency.

Questions? Contact Vern Fasse, Water Distribution Supervisor at 630-671-5830.

Hydrant Flushing Schedule

Tuesday, October 7

Westlake - Edgewater and Greenway, Lakeshore Townhomes

Wednesday, October 8

Fairfield, Springbrook Villas, Springbrook Shopping Center, North Bloomingdale Road, Bloomingdale Town Center, Fessler's Grove, Old Town, Bell Towers, North Maple, North Rosedale

Thursday, October 9

North and South Suncrest, Medinah Country Estates, Dinah Road off Broker Road, Circle Center, Medinah on the Lakes

Tuesday, October 14

Westlake Highlands, Sunnyside, Westwind, Deer Glen, Medinah Lakes, Medinah Meadows, Medinah Grove, Dartmoor Homes, Victoria Brooke Estates, Hamilton Lakes

Wednesday, October 15

Colony Green Westlake Townhomes, College Quad Fours, Harvard, Brookdale, Wilshire Towers, East Army Trail Rd., South Glen Ellyn Rd. to Now Foods

Thursday, October 16

Founder's Pointe, Old Town Estates (East and West), Longridge (Levitt), West Pointe Estates, Lakewoods, The Crossings, South Bloomingdale Rd. to Edgewater Drive

Tuesday, October 21

Indian Lakes (East), Cardinal to Bloomingdale Road, Indian Lakes (West), Meadowlark to Skylark

Wednesday, October 22

Bloomfield Club, Stratford Place, Glengarry, Stratford Homes, Avalon at Stratford, Butterfield Road, Springfield Drive from Army Trail to Schick Road

Thursday, October 23

Country Club Estates, Chateau Lorraine, Bloomfield Hills, Heritage, On the Park, Indian Lakes Resort, One Bloomingdale Place, Los Lagos

Tuesday, October 28

Stratford Lakes, Camden Apts., Bayview Crossing Phases 1 & 2, Springfield Drive (Schick Rd. to Lake St.), Stratford Square, Knollwood Drive

Wednesday, October 29

West Schick Road, Covington, Old Gary, Stratford Plaza, Bloomingdale Business Center

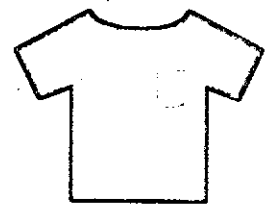
Thursday, October 30

West Army Trail Road from Oriole to Old Gary, Bloomingdale Court, Fretter's Plaza, Schmale Rd. & South including Equity One and Klein Creek, Longview Drive

A word about washing clothes during hydrant flushing -- Don't!

PLEASE DO NOT WASH LAUNDRY

during the flushing hours, as rust staining of the clothing may result. Residents with water softeners are encouraged to check the cycle time of their softeners so that the unit does not regenerate during this period.



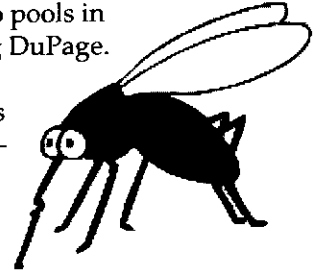
**If you see a
dead blue jay
or crow . . .**

Residents who find a blue jay or crow that appears to have died as a result of natural causes should contact Public Works Maintenance at 630-671-5800. We will assist residents in retrieval of dead blue jays and crows and provide notification to the DuPage County Health Department.

We regret that we are unable to assist in the disposal of any other dead birds.

Mosquitoes and the West Nile Virus: Here's What You Need to Know and What You Can Do

Already this year, researchers have identified 36 positive mosquito pools in Illinois, spread throughout Cook and the collar counties, including DuPage. The presence of infected mosquitoes calls for continued vigilance against the threat of West Nile virus. Clarke Mosquito Control tells us there is high probability of risk this time of year. Clarke encourages customers to continue to take the following steps until mid-October or until the first frost.



- Discard old tires, tin cans, buckets, drums, bottles or any water holding containers in and around your property. Cover trash containers to keep out rainwater.
- Fill in or drain any low places (puddles, ruts) in the yard. Keep drains, ditches, culverts clean of weeds and trash so water can drain properly. Fill in tree root holes and hollow stumps with sand or concrete to eliminate water pools.
- ☑ Repair leaky pipes and outside faucets to prevent puddles of standing water from forming.
- ☐ Empty plastic wading pools at least once a week and store them indoors when not in use and make sure the backyard pool is properly cared for while on vacation.
- ☐ Change the water in birdbaths and plant pots or drip trays at least once a week.
- ☐ Use DEET-based mosquito repellent, avoid being outdoors during times of high mosquito activity (dusk-dawn), and wear long-sleeved, light-colored clothing to reduce your risk of transmission.

Our thanks to the Bloomingdale Township who has contracted with Clarke Mosquito Control since 1996 in order to control the mosquito population, as well as to reduce the risk of West Nile for the residents of Bloomingdale.

West Nile Virus: Be on the Lookout for These Symptoms

Symptoms of the disease are initially similar to the flu, with muscle weakness and disorientation. Though the majority of those infected will have mild symptoms or no symptoms at all, in some individuals, West Nile Virus can cause inflammation of the brain (encephalitis) and in severe cases, paralysis, coma or death. The disease is most serious – even fatal – in those with compromised immune systems and the elderly.

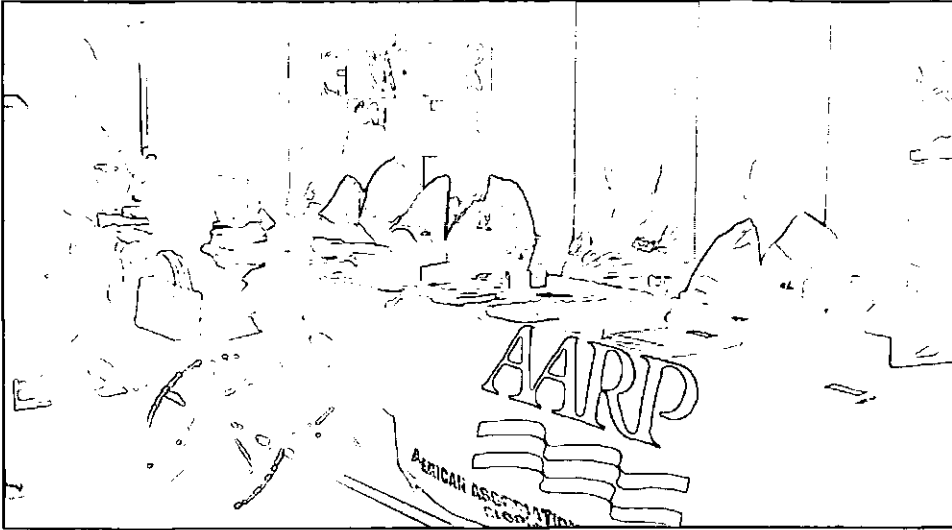
For the latest information on West Nile Virus, consult the Illinois Department of Health website at www.idph.state.il.us, or DuPage County Health Department website at www.dupagehealth.org.

Water Meter Project Update

The Village's Radio Frequency Water Meter Project (RFWMP) is 90.5% complete through August 19th. To date, 6,438 of an estimated 7,150 water meters have been replaced with current, proven technology that will provide an efficient and accurate way to read meters. The project is on schedule and on budget, with a substantial completion target date of October of this year. Thank you for your patience and cooperation during this \$2.2 million project.

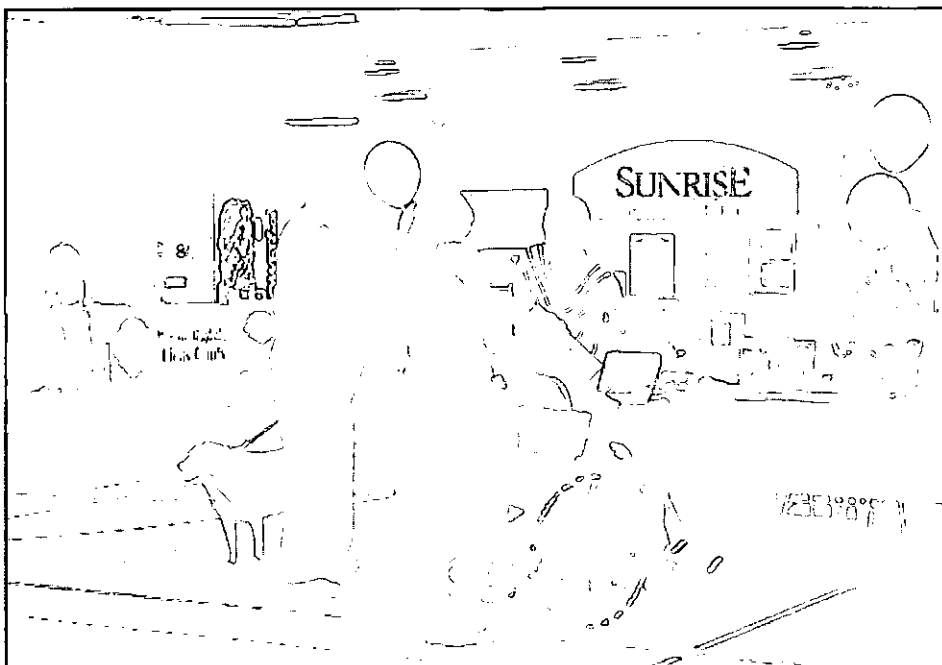
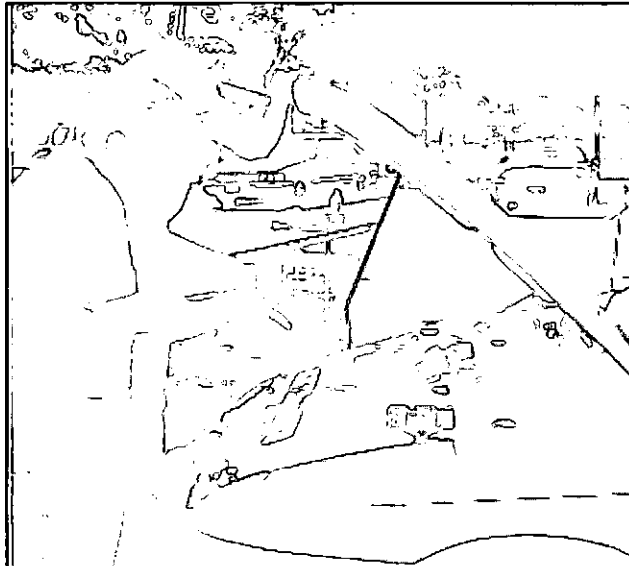
If you have any questions about the new meter project, call (630) 671-5830. If you have any questions about an estimated meter reading, call (630) 671-5650.





Super Senior Fair!!!

A Senior Fair, held last month at Westfield Middle School, featured over 20 groups and organizations highlighting services for seniors. The first-time event, sponsored by the Bloomingdale Police Department Senior Advisory Council, drew nearly 200 seniors.



Sign Up for Quick & Easy Electronic Water Bill Payment

If you pay your water bill through an electronic payment service, you might want to check with your service to see if they are actually paying your bill electronically.

We get paper checks from several of these services to pay water bills. Depending on the length of time it takes for that check to get here through the mail, your bill could possibly get paid late.

The Village provides an alternative real electronic payment service. There is no charge and you can be assured your water bill will always be paid on its due date. It's simple and easy to sign up; a water bill continues to be sent to you and you don't have to "schedule" or notify someone else when to pay your bill.

You can call us at 671-5650 to get an application mailed to you - or simply go online for the form at www.vil.bloomington.il.us

Village of Bloomingdale Recycling Collection Services

NEW RECYCLING TRUCKS IMPROVE RECYCLING SERVICE -
NO NEED TO SEPARATE PAPER FROM OTHER RECYCLABLES

The system BFI uses for collecting recyclable material allows the material to be placed in one compartment. The paper will be separated out at the recycling center for further processing. This allows residents to place larger cardboard pieces at the curb for recycling. It also reduces windblown litter as the trucks do not lift your recyclable material over the top to empty them into the truck.

PAPER ITEMS

Newspaper

- all paper inserts acceptable

Magazines & Catalogs

- glossy and non-glossy accepted

Telephone Directories

Kraft Brown Paper Bags

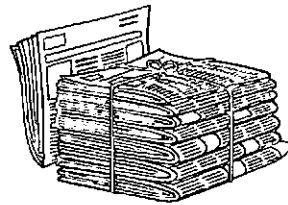
Corrugated Cardboard

Paperboard (Chipboard)

- cereal boxes
- pasta boxes
- clothing boxes
- tissue boxes

Wet Strength Carrier Stock

- frozen food packages
- carriers for beer and soda

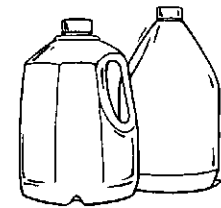


All items
can now
be placed
in one
container

PLASTIC ITEMS

PET (#1) Plastic Bottles & Containers

- 2 liter soda bottles
- plastic beverage containers
- plastic plates & trays
- plastic flower pots
- other #1 non-bottle shaped containers



HDPE (#2) Plastic Bottles & Containers

- baby wipe containers
- margarine tubs
- plastic cups
- laundry detergent
- milk and water bottles
- other #2 non-bottle shaped containers
- shampoo and other personal care bottles

No motor oil, anti-freeze, pool chemical, or other hazardous waste containers

PVC (#3) Bottles

◦ health and beauty aid bottles

- flyers
- greeting cards
- stationery
- notebook paper
- post-it notes
- post cards
- window envelopes
- computer paper
- typing paper
- bond envelopes

Beverage Cartons & Boxes

- gable top milk cartons
- juice cartons
- juice boxes

LDPE (#4) Bottles & Containers

- ice cream tubs
- margarine tubs

PP (#5)

- cottage cheese tubs
- yogurt tubs
- sour cream tubs
- syrup bottles

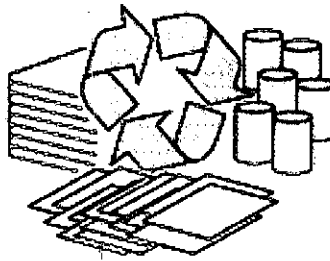
Other (#6)

- plastic packaging
- No packing peanuts*

RECYCLING GUIDELINES

General Provisions

- There is no limit to the number of recycling containers you may set out for collection.
- Stickers are not required on recycling containers.
- Additional recycling containers may be obtained by calling BFI at (847) 429-7370.
- Please write your address on your recycling container(s) to help in recovery if lost or stolen.
- Recycling containers should be left for the new homeowner in the event you should move.

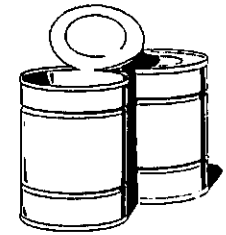


Preparation of Materials

- Do not place recyclable materials in plastic bags.
- All recyclable materials should be rinsed free of food with caps/lids removed.
- Flatten all corrugated cardboard boxes, paperboard, and wet strength carrier stock and remove any non-paper packing material.

METAL ITEMS

- Aluminum cans
- Aluminum foil
- Steel or tin cans
- Aerosol cans
- Aluminum baking trays/pie plates
- Empty paint cans



GLASS ITEMS

- Bottles and jars only
- Brown, green and clear glass

No mirrors or window glass accepted



Illinois Law Specifies Regulations for Paint Ball Guns

In response to concerned parents and questions received by the Police Department, the following information is offered regarding paint ball guns.

□ This issue falls under the Illinois Criminal Code Air Rifle Act. "Air rifle" includes any air gun, air pistol, spring gun, B-B gun, paint ball gun, pellet gun, or any implement that is not a firearm, which impels a breakable paint ball containing washable marking colors or a pellet constructed of hard plastic, steel, lead or other hard materials with a force that is reasonably expected to cause bodily harm.



□ It is unlawful for any person under the age of 13 to carry an air rifle on public streets, roads, highways or public lands, unless the rifle carried is unloaded.

□ It is also unlawful for anyone to discharge any air rifle anywhere except on a safely constructed target range, that has been designed as such.

□ An air rifle should be kept within the house of residence or other private enclosure and it should not allow any projectile to pass over any grounds or space outside the limits of such grounds or residence.

Do You Have a Go-Ped, Mini Bike, or Motorized Scooter? Here's What You Need to Know

Last year the Bloomingdale Village Board passed Ordinance 2002-24 addressing motorized vehicles, including scooters, go-peds, mini-bikes, motorized skateboards, go-carts, snow vehicles and any other similarly engine powered vehicles or devices.

- The ordinance prohibits the operation, use, or control of such a vehicle or device upon any public or private street, highway, sidewalk, parking lot, school ground, bike path or any other public property within the Village.
- The ordinance allows the operation of such a vehicle or device on private property provided the property owner has given permission. It does not prohibit the use of any vehicle or device moved exclusively by human power or motorized wheelchairs.



Parents or legal guardians of any person under the age of 16 years operating such a vehicle or device in violation of the ordinance are liable for any and all damages resulting from operation of such a vehicle or device.

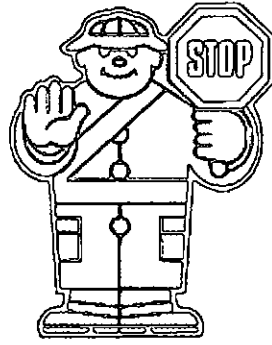
Additionally, they are liable for any fines assessed (not to exceed \$1,000.00 for each offense) for violations (classified as petty offenses) of the ordinance.

Be a "Seasoned" Driver

Here are some basic defensive-driving tips for the fall season:

Children crossing

The beginning of the school year brings a new group of children who are unfamiliar with crossing streets. Sure, there are crossing guards in many areas and school-bus drivers do their best to monitor their riders as they get on and off the bus. But for children of all ages, having fun takes precedence over safety. Remember that:

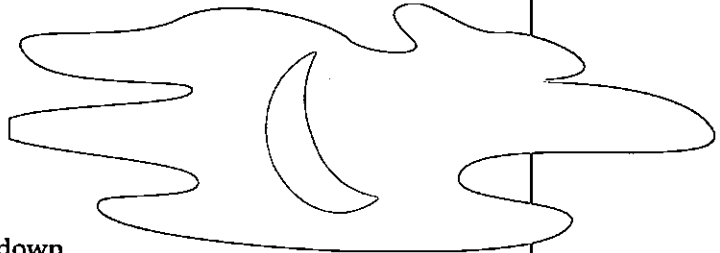


- Children often do not understand the real-life dangers of motor vehicles. They often see cartoon characters go unscathed after they are smashed, bashed and run over. Children don't comprehend the real consequences.
- Small children have a tendency to dart out in front of a moving vehicle without looking. Unless they look directly at you, assume they haven't seen you. Even then, be cautious because their judgment of speed and space is often not keen.

The darkest hours

Be prepared for the lessening daylight hours:

- Keep your lights clean -- all of them. Not only do you want to see, but you also want to be seen by others. Keep your windows and mirrors (inside, too) clean.
- Never wear sunglasses at night. While they may cut down the glare of oncoming traffic, they also hamper your overall vision.



Leaves are falling

Leaves add another hazard to driving during the fall season. Leaves contain plant oils and, as we all know, oil and water don't mix. Stopping on wet leaves can be like stopping on ice. Be aware of the road conditions and adjust your speed and following distance accordingly.

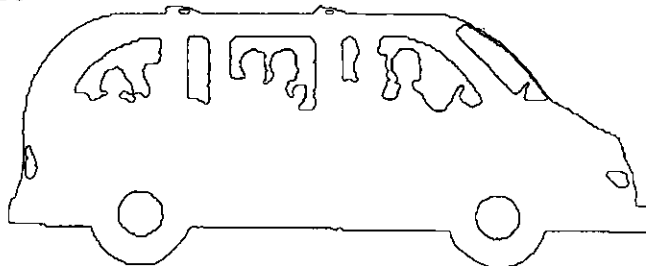
Changing weather

Fall is also a time of changing weather. One day can be warm while the next day may be cool. Some areas become foggy. Other areas develop icy conditions after dark.

Remember, when driving during the fall season, be extra cautious and be prepared for the changes in weather, light and driving conditions.

A few words about weather, windshield wipers and headlights

We all know vehicle headlights must be on from sunset to sunrise, but here's another reminder. Whenever weather conditions (i.e. rain, snow, fog or other atmospheric conditions) require the use of windshield wipers, the headlights on your vehicle must also be on.



2003 DuPage County Fall Household Hazardous Waste Collection Event Schedule

FREE

Get rid of your used oil, old gasoline and expired lawn chemicals
Check the dates and locations below

BURR RIDGE SATURDAY, SEPTEMBER 13, 2003 8:00 a.m. to 3:00 p.m.

Public Works Facility, 451 Commerce St.

Access site from Plainfield Rd.

From Plainfield Rd. go south onto High Grove Blvd., and east onto International St. then left to Facility

WHEATON SATURDAY, OCTOBER 4, 2003 8:00 a.m. to 3:00 p.m.

Commuter Parking lot located at the SW corner of Liberty and Carlton St.

Trash Safety Tips

Broken Glass –
please wrap broken glass in newspaper and tape it shut to reduce the chance that the driver will be cut by the glass while servicing the customers.

Hypodermic needles –
Home use hypodermic needles, such as those used by diabetics can be disposed of in the regular trash. However, please place the sharps in either detergent or 2-liter pop bottles. Put the lid back on and dispose of in the trash, not in recycling bins.

Acceptable Items:

Cleaning solvents	Mercury
Acids	Oil based paints
Thermostats	Insecticides
Propane cylinders	Car batteries
Fertilizers/Pesticides	Wood stain & varnish
Poisons	Pool chemicals
Household batteries	Fluorescent light ballast
Automotive fluids	Fluorescent light bulbs
Thermometers	Helium & Freon cylinders
Asbestos	

Please DO NOT Bring:

Latex Paint	Business wastes
Fireworks	Explosives
Agricultural wastes	Fire extinguishers
Regular garbage	Smoke detectors
Ammunition	Medical waste
Radioactive material	

Please remember . . .

Waste should be kept in the original container whenever possible



For directions call the Household Hazardous Waste Hotline at
(630) 510-2810 or visit the County's website at www.dupageco.org

Household Hazardous Waste: What It Is, How to Dispose of It

Q. What is Household Hazardous Waste?

A. Discarded consumer products with flammable, toxic, corrosive, or reactive ingredients.

Q. How can I avoid Household Hazardous Waste?

A. Use it up! If you use all of a product with hazardous ingredients in accordance with label directions, there is no HHW to manage. Containers that once held a hazardous product are not considered HHW if they are completely empty. If you can't use it up, see if someone else can use the remaining product. Buy safer products. Seek out and purchase products without hazardous ingredients. If no safer alternative exists, purchase only as much of a hazardous product as you need to do the job. Avoid large, economy size containers unless you are sure you can use it up.

Q. How can I dispose of Household Hazardous Waste safely?

A. Because some hazardous products can't be safely used up or recycled, DuPage County provides a permanent HHW collection site, operated by the City of Naperville.

DuPage County will also conduct one-day HHW collection events at these temporary sites:

Saturday, September 13 Burr Ridge Public Works Facility
Saturday, October 4 Wheaton Commuter Parking Lot

For directions or more information, contact the HHW Hotline at 630-510-2810 or visit DuPage County's web site at www.dupageco.org.

Recycling . . . by the Numbers

155 pounds a person: In 2002, Bloomingdale recycled a total of 3,252,000 pounds of material. That's almost 155 pounds for every single person in town!

Trees, beautiful trees: For each ton of recycled paper, we saved the equivalent of 17 fully matured pulp trees, 7000 gallons of water and 4100kw of energy (enough energy to heat and cool the average home for about six months). The energy saved through Bloomingdale's 2002 paper recycling efforts could heat and cool almost 504 homes for a year!

30 days or less: Based on the weight of the aluminum recycled, 1,821,120 cans or a few airplanes could be created. Since aluminum cans are 100 percent recyclable, they can be back on the grocer's shelf as a new can in 30 days.

683,000 pounds and counting: Glass made up 683,000 pounds of our recycled materials. This can be recycled into glass containers, road surface glass-phalt, fiberglass, abrasives and glass beads for reflective paint.

New uses for old stuff: The 195,000 pounds of plastic can be recycled into new containers, but also into fabrics for clothing, upholstery and carpets, as well as plastic lumber and new recycling bins.

It's a steel: Steel represented 146,340 pounds, which was recycled into new cans and steel products.

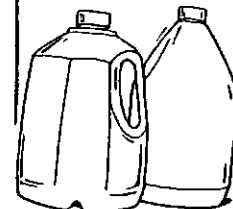
Way to Go, Bloomingdale!

On May 31, approximately 606 people participated in our Household Hazardous Waste Collection Event at the Public Works facility.

The event collected 8,516 gallons of waste.

Thanks to all our residents who took part to make our environment safer.

See page 12 for information on upcoming events in neighboring suburbs.



Trees, Mulch and More



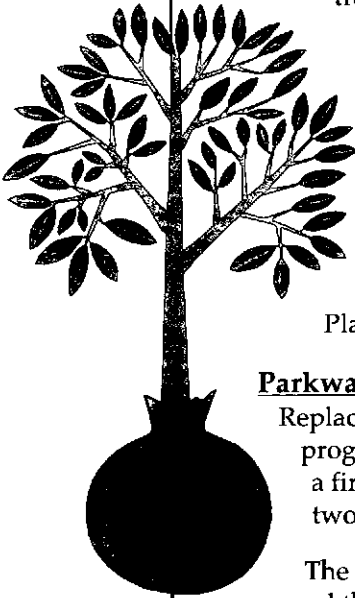
PARKWAY TREE MAINTENANCE

For any and all work by a resident or resident's contractor on a parkway tree, a permit is required by Ordinance No. 95-61, An Ordinance regulating the Planting, Maintenance and Removal of Trees on Public Areas.

PLEASE NOTE -

Installing planter walls around parkway trees is work which requires a permit. The Village discourages the installation of planter walls around parkway trees because the parkway is Village property and the typical installation of a small diameter ring filled with soil is injurious to the tree. For those residents who have installed planter walls without permits, approval can be obtained by contacting Jim Johnson, Village Forester, at johnsonj@vil.bloomingtondale.il.us. The Village will be notifying residents of a violation when unacceptable planters are encountered.

The Village has a comprehensive, systematic pruning schedule which ensures each tree is trimmed every five years. Contract tree pruning occurs during February through April. In-house trimming can occur any time during the year. If a resident believes a parkway tree requires pruning, please contact the Forestry Division at 671-5800.



TREE PLANTING

50/50 Tree Planting Program:

The 50/50 Tree Planting Program is a program for parkway and front yard trees which was started in 1982. Trees are provided to residents, including planting, in a 50/50 cost-sharing with the Village. The trees are planted in the spring and are limited to two trees per year on a lot. Watch for the October Almanac for information and applications for the Tree Planting Program.

Parkway Tree Planting:

Replacement parkway trees may also be requested from the Village. The size of this program is limited by the available funds in the Tree Budget and is maintained on a first-come, first-served basis. The tree planting usually occurs between one and two years from the time of the request.

The residents may plant parkway trees. In this case, a permit must be obtained and the tree species must be approved. The Village Forester can provide assistance in species selection.

MULCH

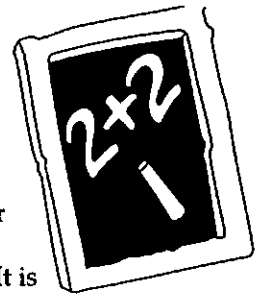
The Village has woodchip mulch available at Public Works, 305 Glen Ellyn Road, for those who wish to come and pick it up. Pick-up can be done from 7 a.m. to 4 p.m. - Monday through Friday.

Late summer/early fall is an advantageous time to mulch as the mulch will moderate the effects of winter on the soil and plant roots, and the decomposition of organic mulches during the winter will add nutrients for the spring growing season.



Neighborhood Watch: Keeping You and the Community Safe **Back to School Safety Tips for Parents, Kids and Motorists**

As the new school year begins, it is an excellent time to review school safety with your children. The youth of today need "common sense" rules that can help keep them safe at school and at play. Please remind your children of all ages of these few simple safety tips.



Walking to and from school:

- Choose a safe route for walking to and from school. Avoid walking by vacant lots, fields, or other areas where there aren't many people around.
- Use the buddy system. Walk to and from school with a friend, neighbor, sister or brother. It is safer to walk in a group than by yourself.
- If you bike or skate to school, wear a protective helmet on your head. Don't forget to lock up your bike or skates at school.
- Be careful when crossing the street. Cross the street at corners or crosswalks. Cars do not expect to see children crossing the street in the middle of the block. Do not cross the street between parked cars. A car could easily hit you if you dart into the street from behind a parked vehicle.
- Stop and look in all directions before crossing the street. Do not expect cars to stop for you. Wait until the street is clear before crossing. Use crossing guards if they are available.
- Use a sidewalk where one is available. If there is not a sidewalk and you must walk in the road, walk on the left side facing traffic.
- Never talk to strangers or accept gifts or rides from people you don't know. If a stranger approaches you, **RUN- YELL- TELL** an adult or call 9-1-1.
- Let your parents know if you need to stay late at school or if you plan to go to a friend's house instead of going straight home.
- If you see something that you think isn't right, tell a teacher or your parents right away.



On the bus:

- While waiting for a school bus, be sure that you are in a safe place away from the road. Be on time and only ride the bus you has been assigned to you.
- Once the bus arrives, enter in an orderly fashion. Be courteous to the driver and do what you are told at all times. Take your seat quickly and stay in your seat for the entire ride. Keep your arms and head inside the bus and never throw anything out of the windows. Help keep the bus clean by picking up trash and throwing it in a garbage can. Never write on or tear the bus seats.
- When you exit the bus, be very careful if you have to cross the street in traffic. Do not depend on traffic to stop because sometimes it doesn't pay attention as it should to the actions surrounding a school bus. Always cross the street in front of the bus, and look both ways for cars before you cross the street.



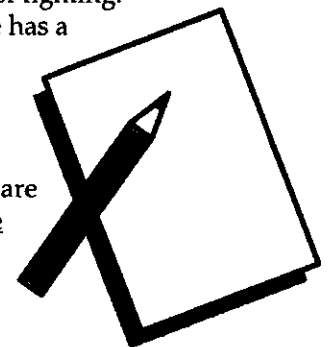
At school:

- Stay away from strangers who hang around the playgrounds or bus stops. A stranger is anyone that you do not know very well. Do not accept anything from a stranger and tell an adult immediately if a stranger is bothering you or other children.
- If you see something that makes you uneasy or you think isn't right—a stranger hanging around school, a bully bothering other youths, vandalism or graffiti—tell a teacher or your parents right away.
- Learn to settle arguments with words, not fists. Walk away from an argument instead of fighting. Never bring weapons of any kind to school and tell a teacher immediately if someone else has a weapon.



With schools back in session, we want to remind everyone to be careful when traveling through these areas during school hours. Kids are not only active before and after school, but also during recess and physical education classes. Students acting as crossing guards are responsible for the safety of others in school zones and residential areas. The school zone speed limit is twenty (20) miles per hour. Please keep this in mind when traveling near school and take extra precaution for the sake of the children.

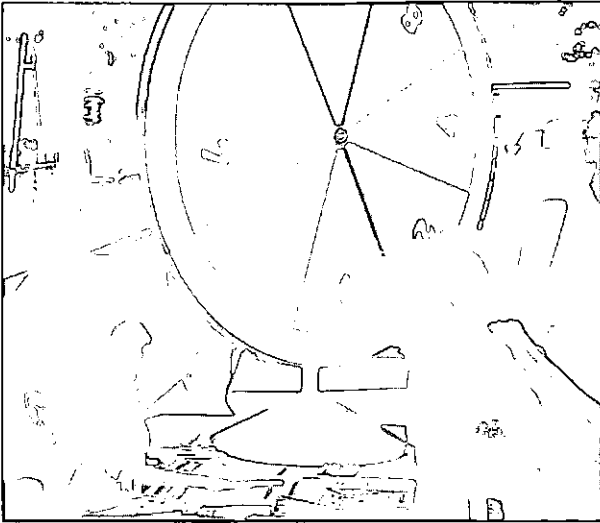
Thank you and have a safe school year.



Village of Bloomingdale
201 S. Bloomingdale Road
Bloomingdale, Illinois 60108

PRESORTED
STANDARD
U.S. POSTAGE
PAID
Bloomingdale, IL
60108
Permit No.# 16

POSTAL PATRON LOCAL
BLOOMINGDALE, ILLINOIS 60108

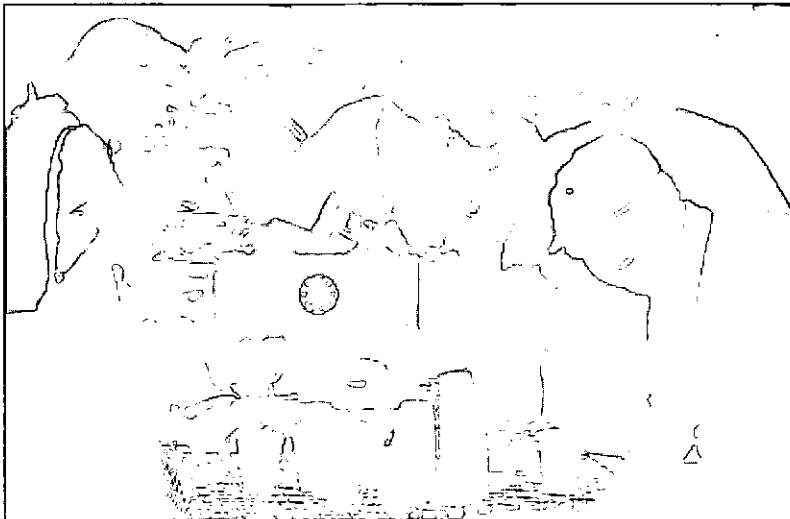


Detective Dawn Odoi chats with a youngster at the Public Library's Ice Cream Social.

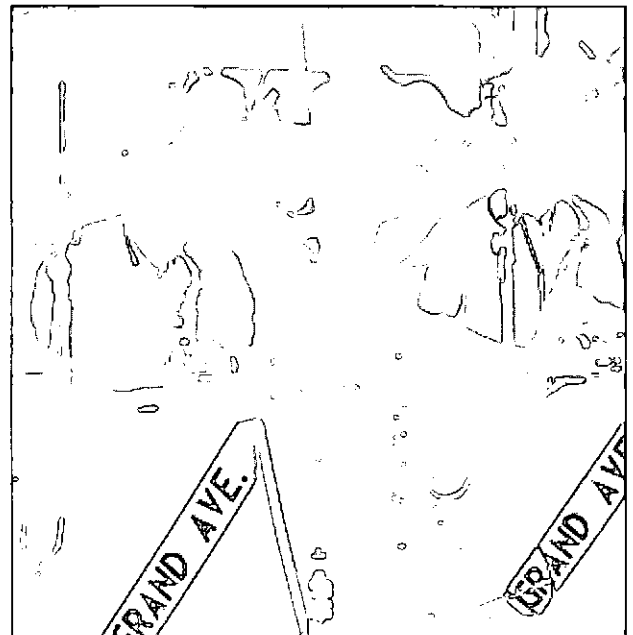
Community Coming Together



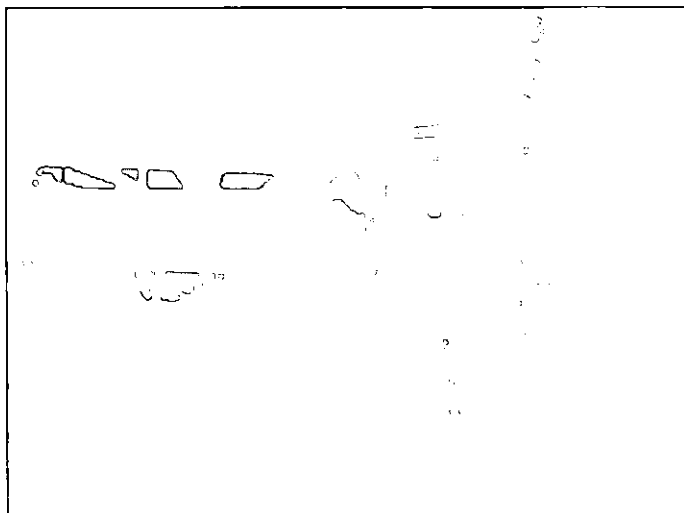
The Fire Department's "Sparky" made a guest appearance at National Night Out.



Residents share a meal at the August 5th National Night Out.



The Grand Avenue Band played all the "big band" favorites and more at the Historical Society's annual "Roy's Famous Friday Night Fish Fry."



Firefighter Matthew McAloon helps a youngster out of the Fire Safety Trailer at the Ice Cream Social.