

Village Fall 2005 Special Edition

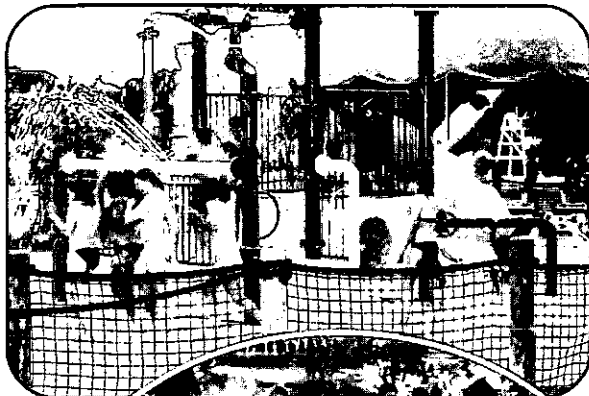
Fall branch pickup October 17-21; see page 4



Village of Bloomingdale Almanac

SPECIAL EDITION

Fall 2005



One For the Record Books!

The Neighborhood Watch National Night Out reached new heights this year. Some 850 people descended on "The Oasis," the Bloomingdale Park District Pool, on Tuesday, August 2.

Food consumed included: 630 hamburgers, 325 hot dogs, 416 bags of chips, 600 soft drinks, 176 bottles of water, 40 pounds of cookies and 10 watermelons.

Four hundred goodie bags were passed out - 200 for adults and 200 for kids. One hundred pool prizes were awarded.

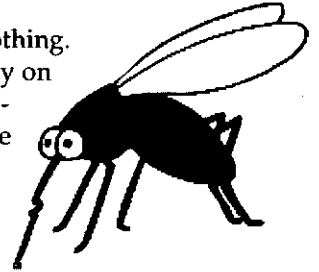
A GREAT time was had by all!



Bloomingtondale West Nile Virus Update: Here's What You Need to Know and What You Can Do

The number of mosquito batches testing positive for West Nile Virus is increasing in DuPage County, as well as neighboring counties. The DuPage County Health Department confirms that a mosquito batch in Bloomingtondale tested positive for the West Nile Virus twice during August, 2005, and reminds residents to continue their protection and prevention efforts:

- ▲ Apply mosquito repellent containing 20%-35% DEET primarily to clothing. Concentrations of 10% or less are indicated for children. Use sparingly on exposed skin. This year, in addition to DEET, the CDC is recommending products containing picaridin and lemon of eucalyptus. Both have proven to be effective mosquito repellents. Always follow the directions on the container.
- ▲ Limit time outdoors when mosquito activity is heaviest (dusk through dawn).
- ▲ Keep skin covered if outdoors between dusk and dawn. Wear long-sleeved shirts, pants and socks.
- ▲ Be sure screens in homes are intact and tight fitting to prevent entry of insects.
- ▲ Keep gutters around home cleared of debris and in good repair.
- ▲ Eliminate any containers that may hold water from around the outside of the home. Water that is allowed to stagnate for three or four days becomes a breeding ground for mosquitoes.



West Nile Virus is transmitted through the bite of a mosquito that has picked up the virus by feeding on an infected bird. Human illness occurs when an infected mosquito bites a person. Most people infected with WNV have no symptoms of illness and never become ill. But some may become ill 3-15 days following a bite.

Symptoms can include fever, headache and body aches. People of any age can contract West Nile illness, but elderly people and those with compromised immune systems may be at greater risk.

As dead crows and blue jays are important sentinels for West Nile Virus, Bloomingtondale Public Works employees will assist residents in retrieval of dead crows and blue jays and provide notification to the DuPage County Health Department. Bloomingtondale residents who find a blue jay or crow that appears to have died as a result of natural causes should contact Public Works at 630-671-5800.

Additional information is available from the DuPage County Health Department at 630-620-3325, and Clarke "Mosquito Hotline" 800-942-2555.

Friends of the Library Book Sale Set for September 17

The Friends of the Bloomingtondale Public Library host their annual book sale on Saturday, September 17 from 9 a.m. to 3 p.m. A large number of videos will be available for sale, as well as many hardcover books in excellent condition. The event will be a "Sidewalk Sale" unless there is inclement weather, in which case it will be held inside the library. Also, the Friends will have 2006 Chicago West Entertainment Books for sale for \$25 each.

Major Road Construction Around Bloomingdale: An Update on Progress & Timeline for Completion

(these updates were current as of press time – last week of August)

Medinah Road is now open to traffic from Lake Street to Irving Park Road. Landscaping work and restoration remains to be finished.

Army Trail Road – Regency Drive to Swift Road: - This project is approximately 60 percent complete with an estimated completion date of October 28, 2005.

Stage 1 (north side) work includes preparation for sidewalks at various locations on the north side of Army Trail Road, and work on the east side of Glen Ellyn Road.

Stage 2 work includes preparation for sidewalks, driveways, and aggregate path.

Stage 3 work includes removing pavement where the medians will be placed.

Work on the stormwater detention area continues, as well as installation of conduits, handholes, and pole foundations for the traffic signals.

Lanes through most of the project are in the Stage 3 configuration, which places the lanes to the outside and closes the median area. The traffic signal at Glen Ellyn Road was changed back to 'normal' operation now that there is a southbound left turn lane.

Lane closures are being used each day as needed.

Future Construction and Traffic:

Remaining Stage 1 work includes some sidewalks, all driveways, top lift of aggregate path, topsoil placement, and the remainder of work on Glen Ellyn Road, north of Army Trail Road.

Remaining Stage 2 work includes some earth excavation, aggregate base, curb and gutter, and bituminous base course; work on Glen Ellyn Road south of Army Trail Road; all sidewalks; most driveways; aggregate paths; and topsoil placement.

Stage 3 work will continue with removal of the pavement where the medians are to be constructed. Crossing the median (left turns) is prohibited except at: Glen Ellyn Road, (near Alden nursing home – emergency vehicles only), Creekside Drive, Valley View Drive, and Meadow Road. Left turns are also prohibited at Walter Drive due to the limited working (and driving) room.

Work will continue on both sides, with lane closures in both directions as needed.



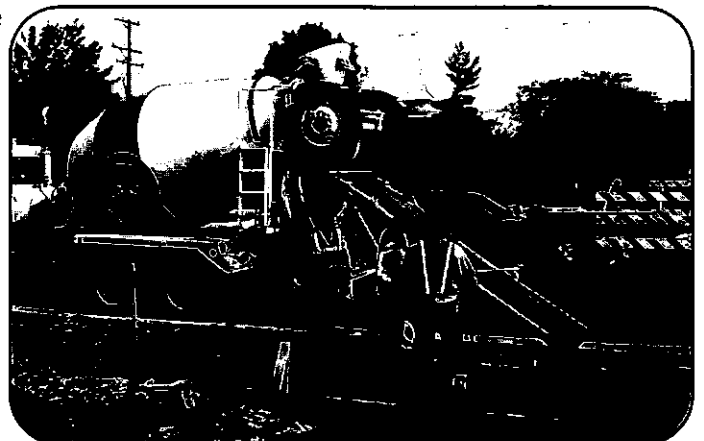
Army Trail Road median, eastbound



Army Trail Road westbound



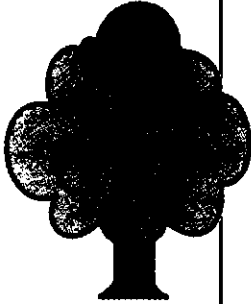
Rows of sewer pipe awaiting installation



Crews pour the new sidewalk along Army Trail Road

2005 Fall Branch Collection Program Begins October 17

Fall branch collection will be once again be performed by Kramer Tree Specialists, Inc. under the direction of the Village Forestry Division. Branch collection will begin on Monday, October 17. The program is only available to single family detached residences. Townhome residents should contact their association regarding branch collection.



BRANCH COLLECTION GUIDELINES:

- Branches must be out by 7:00 a.m. on Monday, October 17.
- Woody branches 1/2 inch to 6 inches in diameter are the only items that will be picked up. (Note: any spikes, hooks or other metal objects must be removed).
- Long lengths are favored provided branches do not block sidewalks and pedestrian access.
- All branches should be placed at the curb or pavement edge and stacked in an orderly fashion with the cut or larger end towards the pavement.
- Thorny tree branches should not be concealed inside piles. These require special care as to not cause injuries to the workers.

THE FOLLOWING ITEMS ARE UNACCEPTABLE:

- Branches left out in a tangled mess.
- Woody branches under 1/2 inch in diameter.
- Leaves, vines, small (under 1/2 inch in diameter) flexible willow stems, herbaceous plants and weeds.
- Large stumps, roots and root balls.*
- Wooden fencing and construction lumber.*



The above items are considered yard waste and may be placed in bags or cans with tags for Allied Waste Industries (formerly Browning Ferris Industries) pick-up. Allied yard waste pick-ups commence April 1st and continue through November 30th. Questions concerning Allied pick-ups should be directed to 847-429-7370.



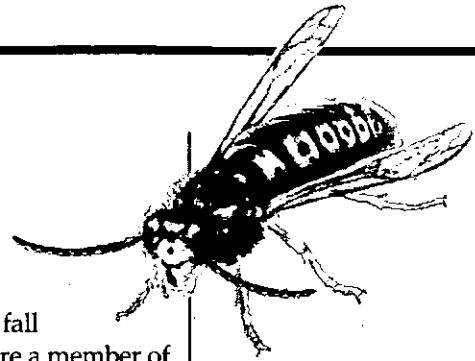
*Large stumps, roots and root balls are considered trash and do not require a yard waste tag, provided each item is of manageable size and under 50 pounds. **Wooden fencing and construction lumber** are also considered trash, but require a special pick-up. Contact Allied for more information.

In the event of severe storms, the Village will provide storm damage collection of woody branches 1/2 inch to 6 inches in diameter. Please contact the Forestry Division at 630-671-5800 within 72 hours of storm for branch collection.

Your cooperation is greatly appreciated and will ensure a successful program.

Beware of the Guys in the Yellow Jackets

Reprinted from the University of Illinois Extension Homeowners Column



Autumn means picnics and outdoor festivals (Septemberfest!). Unfortunately fall activities may include some unwanted guests – yellowjackets. Yellowjackets are a member of the bee and wasp family. Their ability to sting repeatedly makes them a considerable health threat. Yellowjackets alone are responsible for about one half of all human insect stings.

Yellowjackets are about 3/4 inch long with brightly colored yellow and black stripes and very little hair. They live in nests in old rodent burrows, woodpiles, brush piles or hollow trees. In late summer a nest may contain several thousand yellowjackets. Be very careful when doing yard work this time of year that requires moving woodpiles or brush piles. New nests are started each spring.

Yellowjackets are attracted to areas with sweet food such as picnic areas and ice-cream stands. Open cans of garbage, unclean garbage cans or areas of rotting fruit are major yellowjacket attractants. Since yellowjackets often crawl into soda cans unnoticed, people are frequently stung on the lips.

Ways to avoid yellowjackets include:

- Not wearing strong perfumes or brightly colored clothing.
- Don't go barefoot.
- Use drinking cups with lids outdoors.

Avoid swatting or squishing yellowjackets. Squashing a yellowjacket releases a chemical that signals other wasps in the area to attack. The worst reaction is the chaotic sequence of flailing arms and swatting of the offending yellowjacket.

Yellowjackets will not bite or sting a person unless they or their nests are agitated, stepped on or heaven forbid sat on. However they may land on your skin to take a drink of sweat or inspect a smell. Just be patient and they will fly away. If you can't be that patient, very gently brush them off with a piece of paper with slow deliberate movements. The same method should be used if a yellowjacket makes its way into your car.

Yellowjacket traps are marginally useful to reduce the population. However, keeping garbage cans clean and covered, keeping outdoor food areas clean and removing rotting fruit is still necessary to keep yellowjackets in check. Once yellowjackets figure out a place for food, they will keep coming back.

A yellowjacket nest around the home may require additional control measures. Remember bees and wasps are important pollinators so indiscriminant destruction of their nests should be avoided. Yellowjackets are active during the day so control measures are best conducted on cool nights. If you must use a flashlight, cover the lens with red plastic or cloth. Try to cover as much skin as possible with tight fitting heavy clothing.

Underground nests can be controlled by pouring the pesticide permethrin down the hole. Read and follow all label directions. Immediately after the application put a shovel-full of soil over the hole and run away, run far away.

Above ground nests can be dusted with cabaryl (Sevin) pesticide to coat the opening. Read and follow all label directions. The dust can also be placed on a small piece of steel wool or cotton to surround the hole. As the yellowjackets go in and out they get the pesticide on their bodies. As they groom, they ingest the pesticide. Nests should be killed in about five days. Never completely plug a hole going into the home if an active nest is present.

Park District Museum Showcasing Art Institute Alumni Exhibit

The Bloomingdale Park District Museum at 108 S. Bloomingdale Road in Bloomingdale, Illinois will be hosting an exhibit from ALUMNI OF THE SCHOOL OF THE ART INSTITUTE OF CHICAGO. The exhibit, Strictly Drawing, an Alumni 2-D exhibition features 47 works by 32 alumni of the School of the Art Institute of Chicago from September 10 to October 15, 2005. The artist reception is on Sunday, September 18 from 2-4 p.m.

The exhibit showcases various drawing styles, skills and techniques of these School alumni from a 1949 graduate to recent 2005 graduates - a range of 56 years of alumni. Museum hours are Wednesdays - 4-8 p.m., Thursdays & Fridays, 10-4 p.m. and Saturdays - 12-4 p.m.

Call 630-539-3096 for more information.

The Teeing Ground

Welcome to Bloomingdale Golf Club's first of many informative issues of golf news. Here we will keep you abreast of activities and helpful tidbits involving the golf course.



For those who are unfamiliar with the golf course, general information, green fee pricing, tee-time availability and golfing instructions options can be easily accessed on our website at: www.bloomingdalegc.com. Please check it out!



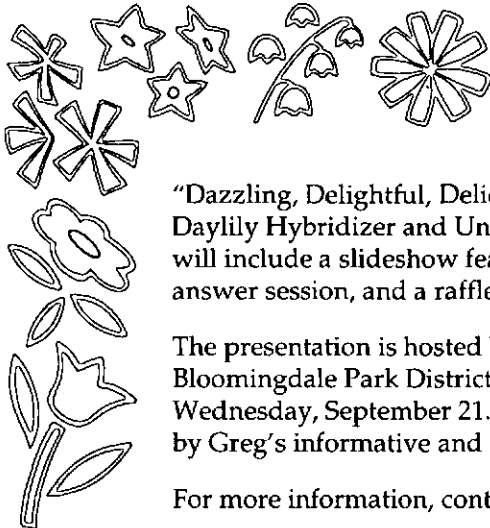
The golf season is still in full swing, and one of the best times to golf is during the late summer and fall. If you are already thinking ahead to the 2006 golf season and would like to be considered for a permanent tee time, give us a call and we will place you on our waiting list.

Have you registered with our loyalty program? If not, please do so the next time you come to play. It's FREE and you can earn award dollars redeemable for green fees. Additional information and guidelines are available upon registration.

Things to remember:

- Residents receive a discount on green fees. Just present your driver's license at the counter and the resident rate will be issued. If you bring a guest, they are not entitled to this rate.
- Residents may make a tee time 10 days in advance. This may only be done by calling into the golf shop direct.

Do like to practice? We recently opened our newly renovated putting and chipping green located next to our practice range (see photos). Additionally, a practice sand bunker was installed to work on that all important sand shot.



'Dazzling, Delightful Daylilies' Topic of September 21 Program

"Dazzling, Delightful, Delicious Daylilies," will be presented by Greg Bartoshuk, Daylily Hybridizer and University of Illinois Master Gardener. The presentation will include a slideshow featuring a dazzling variety of daylilies, a question and answer session, and a raffle of Greg's very own daylily seedlings.

The presentation is hosted by the Bloomingdale Garden Club and will be held at the Bloomingdale Park District Museum, located at 108 S. Bloomingdale Road on Wednesday, September 21. A business meeting will be held at 6:00 p.m., followed by Greg's informative and enjoyable presentation at 6:30 p.m.

For more information, contact Helen Price at 630-980-6585.

Neighborhood Watch: Keeping You and the Community Safe **Back to School Safety Tips for Parents, Kids and Motorists**

Another new school year has begun and it is an excellent time to review school safety with your children. "Common sense" rules can help promote safety at school and at play. Here are a few simple safety tips that can benefit children of all ages.

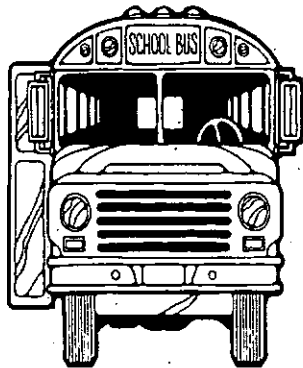
Walking to and from school:

- Choose a safe route for walking to and from school. Avoid walking by vacant lots, fields, or other areas where there aren't many people around.
- Use the buddy system. It is safer to walk in a group than by yourself.
- If you bike or skate to school, wear a protective helmet on your head. Don't forget to lock up your bike or skates at school.
- Cross the street at corners or crosswalks.
- Be careful when crossing the street; remember to stop and look in all directions.
- Never talk to strangers or accept gifts or rides from people you don't know. If a stranger approaches you, **RUN- YELL- TELL** an adult or call 9-1-1.
- Let your parents know if you need to stay late at school or if you plan to go to a friend's house instead of going straight home.
- If you see something that you think isn't right, tell a teacher or your parents right away.



On the bus:

- While waiting for a school bus, be sure that you are in a safe place away from the road.
- Be on time and only ride the bus you have been assigned to.
- Once the bus arrives, enter in an orderly fashion. Be courteous to the driver and do what you are told at all times. Take your seat quickly and stay in your seat for the entire ride.



- Keep your arms and head inside the bus and never throw anything out of the windows. Help keep the bus clean by picking up trash and throwing it in a garbage can. Never write on or tear the bus seats.
- When you exit the bus, be very careful if you have to cross the street in traffic. Do not depend on traffic to stop because sometimes it doesn't pay attention as it should to the actions surrounding a school bus. Always cross the street in front of the bus, and look both ways for cars before you cross the street.

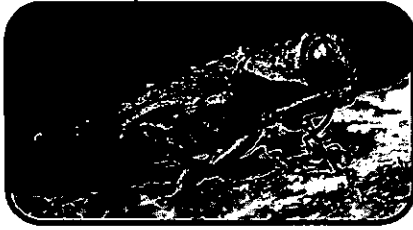
At school:

- Stay away from strangers who hang around the playgrounds or bus stops. A **stranger** is anyone that you do not know very well. Do not accept anything from a stranger and tell an adult immediately if a stranger is bothering you or other children.
- If you see something that makes you uneasy or you think isn't right—a stranger hanging around school, a bully bothering other youths, vandalism or graffiti—tell a teacher or your parents right away.
- Learn to settle arguments with words, not fists. Walk away from an argument instead of fighting. Never bring weapons of any kind to school and tell a teacher immediately if someone else has a weapon.

With schools back in session, we want to remind everyone to be careful when traveling through these areas during school hours. Kids are not only active before and after school, but also during recess and physical education classes. Students acting as crossing guards are responsible for the safety of others in school zones and residential areas. **The school zone speed limit is twenty (20) miles per hour.** Please keep this in mind when traveling near school and take extra precaution for the sake of the children.

Thank you and have a safe school year.

Emerald Ash Borers Invading Northern Illinois: Websites Tell You What to Look for, How to Protect Your Trees



Emerald Ash Borer

The Morton Arboretum is cooperating with the USDA Animal and Plant Health Inspection Service (APHIS) and the US Forest Service to detect the possible presence of the Emerald Ash Borer (EAB) in northeastern Illinois. A broad, comprehensive survey is underway to find the borer as early as possible to minimize tree loss. The survey will continue into the fall. It is expected that annual surveying will be necessary given the proximity of existing EAB infestations in Michigan and Indiana.

The Chicago area is at extremely high risk due to the proximity of major infestations, movement of wood products, and important transportation routes. Ash trees are found in forests as well as in urban landscapes where it accounts for nearly 20% of all of the region's street trees.

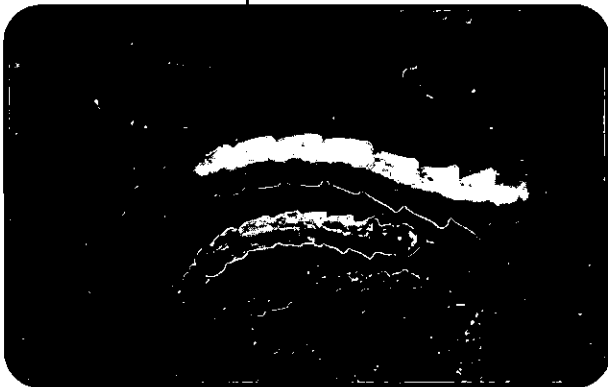
Emerald Ash Borer is a serious invasive beetle from China that kills ash trees. Discovered in 2002, the insect has since established populations in Michigan and killed at least 12 million ash trees in Michigan and Ontario, Canada. It has also been found in Ohio, Indiana, and Maryland.

Newly infested trees may appear healthy and have no visible symptoms of attack, making detection very difficult. The borer tunnels and feeds under the bark of ash trees cutting off the flow of water and nutrients. The tree canopy will die back and, within three years of infestation, the tree dies.

Homeowners are cautioned not to bring plants and firewood home after summer vacation. The Emerald Ash Borer can travel in nursery stock or in firewood.



Emerald Ash Borer exit holes



Emerald Ash Borer larva

The Emerald Ash Borer attacks the tissue that conveys nutrients from the roots through the tree. From May through August, the adult beetles fly from tree to tree, nibbling the leaves. During the summer, females lay between 65 and 90 eggs on the bark surface or in crevices. After a week, the eggs hatch and cream-colored larvae gnaw through the bark and into the cambial layer of the tree and feed on the tissue there. Eventually, these tunnels,

which grow larger, stop the flow of water and nutrients inside the tree's

branch or trunk. In mid- to late May, the larvae begin to emerge from the tree through small D-shaped holes and the cycle begins again. Trees don't show immediate symptoms but lose 30 to 50 percent of their canopy in one year and often die within two to three years after infestation.

The adult Emerald Ash Borer is slender, elongated and 7.5 to 13.5 mm long, brassy or golden green overall, with darker, metallic, emerald green wing covers. Possible sightings should be reported to the USDA hotline number: 312-742-3385.

Photos and additional information can be found at the following web sites:

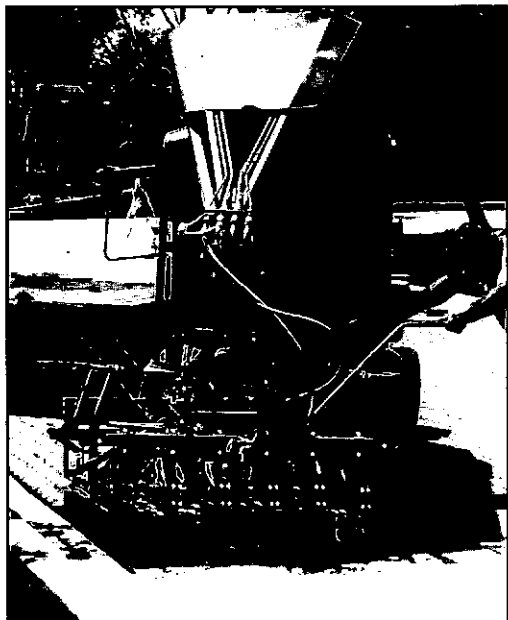
<http://na.fs.fed.us/fhp/eab/> and <http://www.emeraldashborer.info/>.



'Environmentally Friendly' Pavement & 'Bio-Swale' Are Unique Features in New Gazebo Parking Lot

We know many residents have been inconvenienced by the summer construction of the gazebo parking lot which normally holds Village and overflow Library parking. The project is expected to be completed in October, in plenty of time for the Library's ever-popular children's Halloween party.

There are some unusual components to the reconstruction of this particular lot. Unique to this project is the innovative use of an 'environmentally friendly' pavement system constructed in the driveway area which allows rain runoff to percolate down to an under drain system; filtering pollutants from the storm water before discharging to the storm system and ultimately the East Branch of the DuPage River.

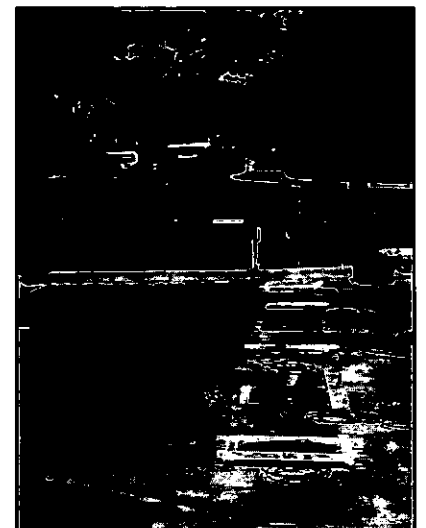


This type of material has been successfully used at the Morton Arboretum parking areas and at Dominican University in River Forest. The main driveway is done in the porous pavement brick pavers and the rest of the parking lot is asphalt. Pictures show the pavement system being placed in 5' by 3.5 foot sections of brick pavers.

Another 'green' feature proposed in the parking lot will be a 'bio-swale' planted with native perennial plants and shrubs. The bio-swale accepts rain run-off; absorbing and filtering sediments and pollutants before discharge the storm water to an underground drain system.

In addition to being environmentally friendly, the design will lessen ground water flows which currently move toward the recently reconstructed Library parking lot. Intercepting this water will extend the Library parking lot useful life.

One other feature of the parking lot re-construction is the installation of a new stainless steel tent anchor system embedded into a concrete foundation to continue the outdoor Village/Library events such as the Summer Reading Celebration/Ice Cream Social, Roy's Fish Fry and the Halloween Party.



The soil is prepared for the bioswale.

One of the areas for the tent anchors which will eliminate potential damage to the newly constructed lot.

Avoid Flooding Problems

If this drought ever ends, and we get some typically heavy fall rainstorms, homeowners could experience flooding problems. Village Services provides some tips to help alleviate potential problems.

- Make sure the sump pump is working properly and is large enough. Many times smaller pumps or older pumps cannot handle large amounts of water which results in an overflow.
- Sump pumps should be connected to a backup source of power such as a battery or generator in case of an electricity failure. Make sure the pump and sump-pit are clear of debris.
- The sump pump or other foundation debris should not be connected to the sanitary sewer. If this connection is made it will cause the sanitary drains (toilets, sinks, basement floor drain, etc.) to backup during heavy rains. This may also cause an overload in the main lines and contribute to backups to your home and neighboring homes.
- To prevent leakage from basement window wells, installing new windows or glass block windows should help solve the problem. However, homeowners should check with Building and Zoning Division to make sure they are following proper building codes to maintain escape exits and ventilation requirements.
- While some landscaping may prevent flooding for homeowners, it might also cause their neighbor's property or home to flood. Landscaping, fences and other obstacles are usually to blame for blocking the designed overland flow routes. When performing such work on your property be aware of, be careful not to alter, the drainage patterns in your yard.
- Waterproof cracks around pipes in basements from the outside or inside to prevent seepage. This can be done in some minor cases by the homeowner, or by a waterproofing contractor.
- Most homeowners' insurance policies do not cover property for flood damage. Homeowners should check with their insurance company for proper flood coverage.

Villagers Club to Host Auction on October 6

The Villagers Club of Bloomingdale hosts its annual Auction on Thursday, October 6 at 6:30 p.m. at the Bloomingdale Golf Club, Glen Ellyn Road, 1/2 block south of Schick Road.

Collectibles, foodstuff, home accessories, hand-made items, holiday items, specialties and surprises will be offered. There is also a special door prize for guests.

Refreshments will be served.

Free Admission.

All proceeds will benefit several local charities.





Talkin' Trash

Browning Ferris Industries (BFI), our curbside collection service, is now called Allied Waste Industries. Only the name has changed. Our services will remain the same.

Some reminders:

Garbage must be placed at the curb prior to 6:00 a.m. on the day of pick-up, but no earlier than 6 p.m. on the night before your pick-up. All containers and refuse must be removed from the specified location by sundown on the day of your collection.

Collection is not provided on the following holidays:

New Year's Day
Memorial Day
Independence Day
Labor Day
Thanksgiving
Christmas

On holiday weeks, collection is one day late for that week only.

Yardwaste: Here's What You Need to Know

Yard waste (grass clippings, twigs, leaves, plant materials, etc) pick-up is provided from April 1 through November 30. Cans or bio-degradable bags must have yard waste stickers affixed.

Yard waste stickers are \$1.58 each and are available at the Village Hall, Bloomingdale Pharmacy, the Dominick's stores on Gary Avenue and on Army Trail Road, the Jewel on Bloomingdale Road, Caputo's in Springbrook Shopping Center and Butera on Lake Street in Roselle. Maximum weight of yard waste bags or cans is 50 pounds.

Paper, plastic, metal and glass recycling items may be placed in one container. There is no need to sort recyclable items, and there is no limit to the number of recycling containers you may set out for collection. Stickers are not required on recycling containers.

Questions concerning refuse, recyclable or yard waste pick-ups should be directed to Allied Waste at 847-429-7370.

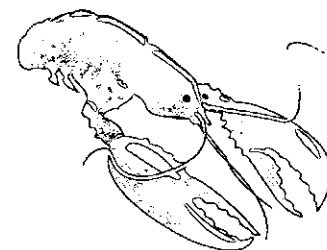
Calling All Lobster Lovers!

Incarnation Church, 261 W. Army Trail Road, is hosting its third annual Lobsterfest on September 24. The lobsters are flown in from Maine that morning and offered live or cooked. They are 1 1/4 pounds each and cost \$17 each live and \$19 each cooked. Have a party that night and your main course is set!!!

Pick up times are:

4:00 pm (live only)
4:30 pm (either)
5:00 pm (cooked only)
5:30 pm (cooked only)

Orders need to be received by September 20th. For more information or to get an order form, call the church office at 351-3249.



Expanded Hours for Village Services Department Continues

The Village Services Department will continue to be open from 7:30 am to 4:30 pm, Monday-Friday to service residents/contractors with expanded hours.

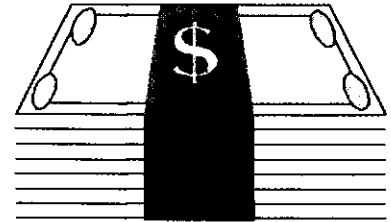
The east entrance on the Village Hall lower level will open at 7:30 am.

Please call 630-671-5660 to reach the Village Services Department.

Illinois State Treasurer Judy Baar Topinka Offers \$50,000 in Scholarships to Grandparents

Illinois State Treasurer Judy Baar Topinka is currently accepting applications for the second annual "Bright Dreams - A Promise for the Next Generation" scholarship program designed specifically for grandparents to help send their grandchildren to college.

A total of \$50,000 in scholarship money will be awarded to the winners of a 500 word essay contest answering the question, "My grandchild would make a great... (fill in the blank)."



The competition will be divided among five regions and judged by volunteers from the Illinois Retired Teachers Association. Eight Bright Start scholarships will be awarded in each region: one for \$5,000; two for \$1,500 and five for \$500. The regions are: 1) Cook County; 2) the Collar Counties; 3) Northern Illinois; 4) Central Illinois; and 5) Southern Illinois. Each region will have an independent review board which will select the winners based on how well the theme is approached.

"Sending a child to college is one of the greatest expenses families have to endure - and grandparents are increasingly helping to fund their grandchildren's education," said Topinka. According to the National Association of Independent Colleges, tuition has increased 86 percent at private universities and 47 percent at state supported schools over the past decade.

"That is why the State Treasurer's Office wants to lend them a hand through our Bright Dreams Program," said Topinka.

The applicant must complete and sign the 2005 Bright Start Bright Dreams Program Application and mailed with the essay by September 15, 2005. The essay should be approximately 500 words and be clearly hand written or typed. Only one entry is permitted per individual.

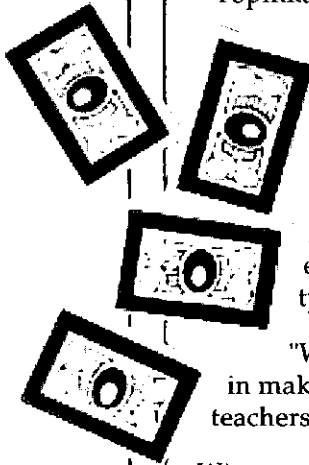
"We would like to thank the Illinois Retired Teachers Association for their help in making this scholarship a success...I mean, who better to grade these essays than teachers, right?" said Topinka.

Winners will be notified in October via certified mail to the address indicated on the application.

The scholarship will come in the form of a 529 Bright Start College Savings Account which offers exceptional tax benefits. Contributions are deductible from Illinois income taxes and qualified withdrawals are exempt from Illinois and federal income taxes. An account may be opened with as little as \$25.

"With this account you would be joined by 123,000 other account holders who have invested nearly \$1.5 billion," said Topinka.

For further information or to request an application, please contact the Treasurer's Office at 877-43-BRIGHT (877-432-7444), 312-814-3742 or visit either w or w.brightstartsavings.com.



A Century of Living



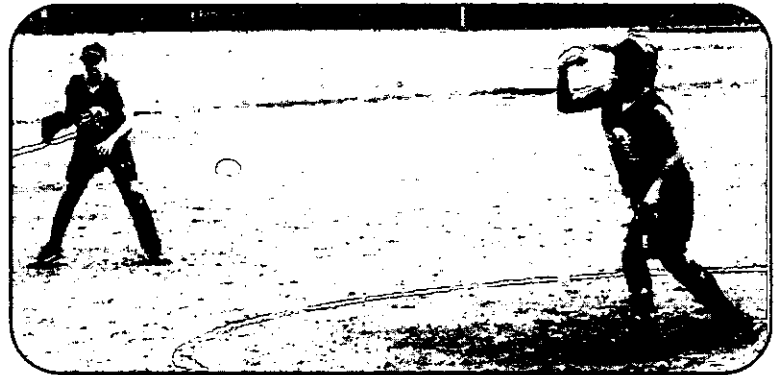
Mary Lou Pedregal celebrated her 100th birthday at Sunrise Assisted Living amid family and friends. Mayor Bob Iden was on hand to proclaim August 22, 2005 as "Mary Lou Pedregal Day" in Bloomingdale in honor of the occasion.

The Bloomingdale Blast

The Bloomingdale Blast Girls Fast Pitch Travel Softball Teams hosted tournaments for the U10, U12, U14 and U16 teams over two weekends in July. It was a terrific time for all involved!



Here's the windup



And a pitch!



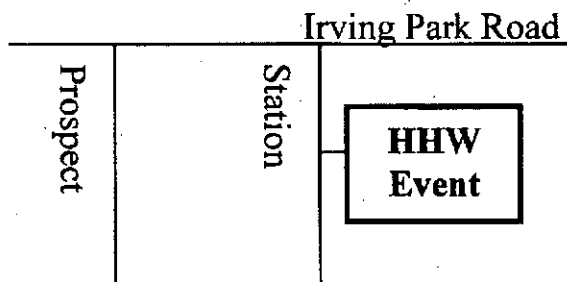
U10 Bloomingdale Blast Team

DUPAGE COUNTY & ILLINOIS EPA 2005 HOUSEHOLD HAZARDOUS WASTE COLLECTION EVENTS



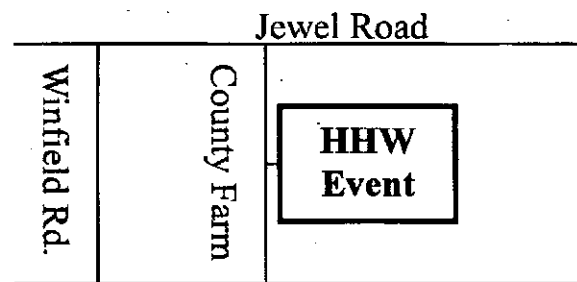
WOOD DALE

Fire District Building
411 W. Park
Saturday September 10, 2005
8 a.m. to 3 p.m.



WHEATON

DuPage County Complex
421 N. County Farm Road
Saturday October 1, 2005
8 a.m. to 3 p.m.



NOTE: The Illinois EPA is also collecting unwanted cellular phones for victims of domestic violence.

Acceptable Items

Mercury
Mercury thermometers
Mercury containing items
Thermostats
Cleaning Solvents
Acids
Oil based paints
Wood stains & varnish
Household batteries
Car batteries
Automotive fluids
Propane cylinders
(gas grill size only)
Pool chemicals
Fertilizers/Pesticides
Poisons/Insecticides
Fluorescent light ballast
Fluorescent light bulbs
Asbestos

Please Do Not Bring

Latex paint
Fireworks
Agricultural wastes
Regular garbage
Ammunition
Radioactive material
Other gas cylinders
School wastes
Business wastes
Explosives
Fire extinguishers
Smoke detectors
Medical waste
Motorcycle batteries

Visit the County's website at

WWW.DUPAGECO.ORG

Click on "Regulatory Services" and then "Waste and Recycling" for updated information on the Regional Household Hazardous Waste Facility, options for latex paint and other recycling opportunities or call the event hotline at (630) 407-6760.

DuPage County Board Chairman Robert Schillerstrom and Environmental Committee Chairman Michael McMahon encourage all DuPage County residents to properly dispose of their household hazardous wastes by taking advantage of these free events.

Beware of Car Burglaries






Car burglaries are one of the most frequent crimes reported to the police. A car burglary occurs when a vehicle is illegally entered (with or without force) and items are taken from inside the car. There have been many car burglaries reported to the Bloomingdale Police Department during the past summer months and surprisingly the incidents have a common theme—an unlocked door or window.

WELCOME
Bloomingdale is a
CRIME WATCH
community



We immediately report
all suspicious activities
to our Police Department

Here are simple reminders that can help protect your car from a burglary.

-  Park your vehicle in a secure garage whenever possible. If you live in an apartment or condominium area without garage access, park your vehicle in a well-lit area close to a street or building entryway.
-  Lock all car doors even when parked in your driveway or in a garage. An unsecured door is an easy opportunity and the most common point of attack in car burglaries. Also, properly secure the windows paying special attention to small vent windows and sliding back windows.
-  Always remove your keys from the ignition—even in your garage. This will help prevent burglaries and car thefts.
-  Never leave personal belongings in plain view. Avoid leaving valuables in your vehicle. If you must store belongings in the car, hide them from view in a glove box, under the seats or in your trunk.
-  If your vehicle is burglarized despite your efforts, always report the burglary to police, even when nothing appears to be missing. Your information could reveal a crime pattern in a specific area of town and greatly increase the likelihood of catching the burglar.

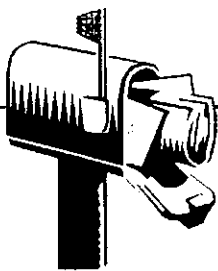
Remember that the police are unable to solve crimes that go unreported.

Any questions or concerns regarding this information or other crime prevention issues, please contact Detective Dawn Odoi of the Bloomingdale Police Department at (630) 529-9868.

Over 60 Years of Age and Thinking of Some Minor Home Repairs?

A reminder to residents 60 and over. As a participating community in the DuPage County Senior Citizens Council Home Maintenance Program, residents of Bloomingdale are entitled to free home safety inspections, free contractor referrals and \$20 per half-hour minor repair services.

Call the DuPage Senior Citizens Council for more information at 630-620-0804.



Before Winter Arrives

Residents are requested to inspect mailboxes and posts to ensure sturdiness and compliance with the postal service installation requirements, and correct any problem identified. If you have questions as to whether or not your mailbox is in compliance with Village requirements, you may contact the Village Services Department's Street Maintenance Division at 671-5800.

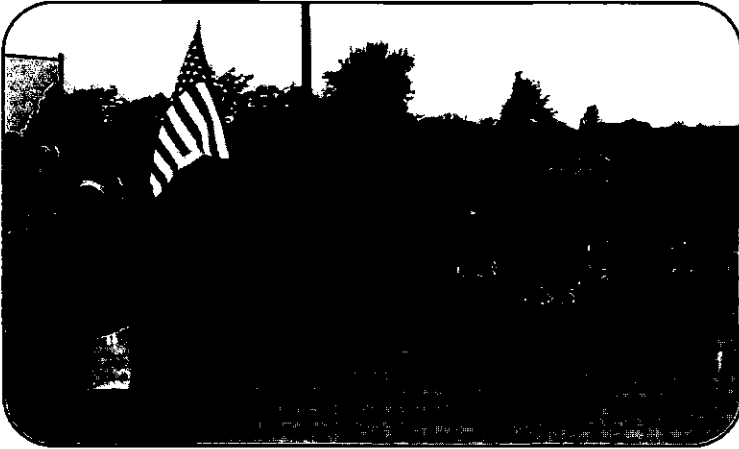
Also, if ornamental rocks or planters are used for landscape beautification, residents need to ensure that they are a minimum of three feet in back of the curb or pavement on non-curb streets. If deemed necessary for safe snow removal operations, these obstacles will be removed by the Village.

Village of Bloomingdale
201 S. Bloomingdale Road
Bloomingdale, Illinois 60108

PRESORTED
STANDARD
U.S. POSTAGE
PAID
Bloomingdale, IL
60108
Permit No.# 16

POSTAL PATRON LOCAL
BLOOMINGDALE, ILLINOIS 60108

The Boys (and Girls) of Summer

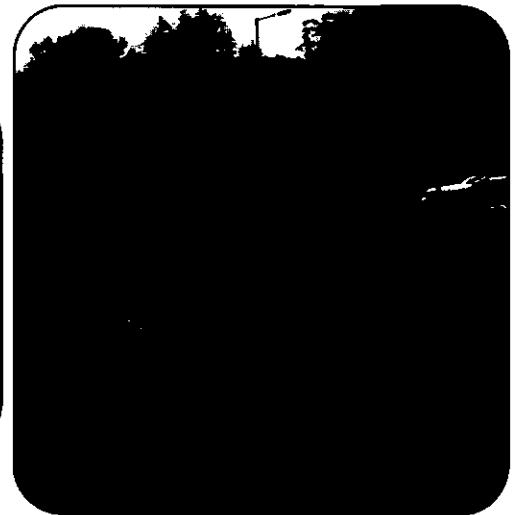


Half-Pints



Heroes

The Heroes vs Half-Pints softball game, sponsored by the Bloomingdale Park District, was another rousing success. Members of the Bloomingdale Police Department went up against Park District day campers and a few counselors. Once again the Half-Pints rose to the challenge and the Heroes were defeated for the second year in a row. Everyone enjoyed the ice cream bought by the defeated team.



Street Closings for Septemberfest Parade on September 10

On Saturday, September 10, the Septemberfest parade will step off at DuJardin School on Euclid. It will go west on Schick Road, cross Bloomingdale Road and turn right on Third to end at the pavilion in Old Town Park.

These areas will be closed to traffic from 11:00 a.m. until approximately noon to accommodate the parade. The Septemberfest Commission apologizes for any inconvenience.

