

Village of Bloomingdale Almanac

SPECIAL EDITION

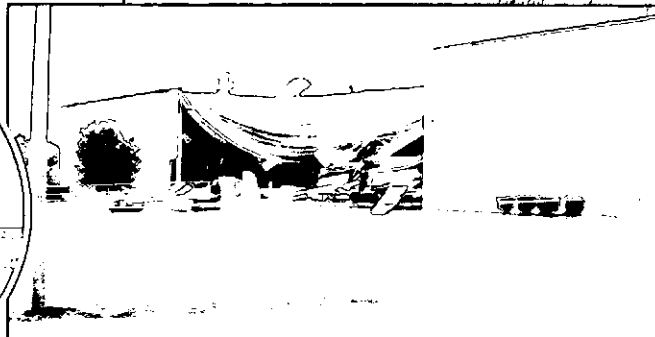
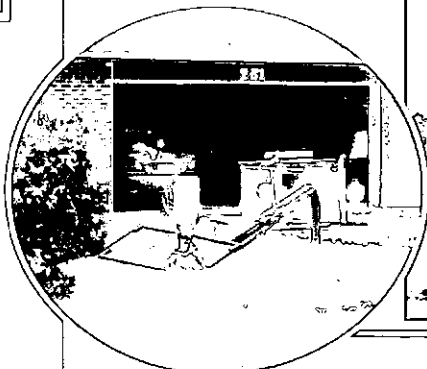
Fall 2008



A Night to Remember

The continuous line of thunderstorms spanning many miles, which moved across northern Illinois and Indiana on August 4 for several hours, affected many locations. According to the National Weather Service, the atmosphere was quite unstable because of the combination of the heat of the day, the humidity and upper level winds. Around 6:00 p.m., the system moved into far northwest Illinois. As it continued moving south, a portion of the storm began to bow, creating what is known as a "bow echo," which can cause very severe storms with very high winds.

The Bloomingdale area was at the northern end of this bow. Areas of circulation can (continued on page 2)



A Night to Remember *(continued from page 1)*

develop at either end of a bow echo, which sometimes lead to the formation of tornadoes - especially on the left (usually northern) end, where the circulation shows cyclonic rotation. The Bow Echo that moved across northern Illinois and northwest Indiana produced winds to 94 MPH at one point, while creating widespread damage and at least three confirmed tornadoes. As most Bloomingdale residents know, at about 7:45 p.m., one of these tornadoes bounced through Bloomingdale, touching down in at least four spots and creating major wind damage. With wind speeds estimated to 110 MPH, the tornado was rated at EF1.

Damage to trees and rooftops was widespread across a portion of the Bloomingdale, Glendale Heights, and Addison areas where straight line winds were estimated to have been greater than 76 MPH. Embedded within this zone was evidence of a tornado touchdown in Covington Corporate Center, west of Gary Avenue. Near Fox Court and Madsen Drive, a large warehouse had a concrete panel wall blow out also causing the roof to partially collapse. Another warehouse in this location had a one-ton air conditioning unit thrown off the roof and into the adjoining parking lot. Loading dock garage doors were blown out in a third location in this area.

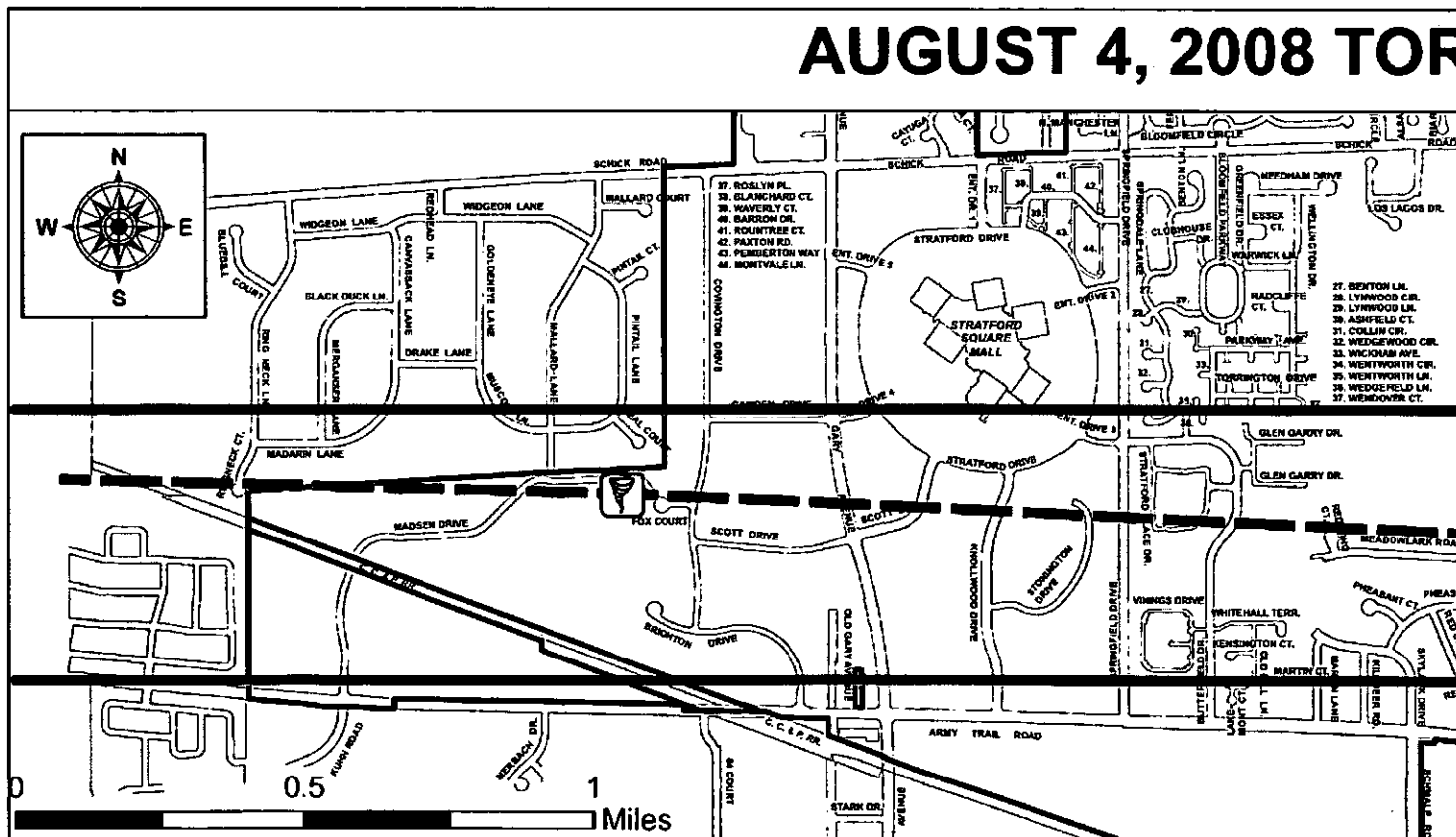
Just east of this area on the west side of Gary Avenue, windows were blown out in a tenant space of the Barnes and Noble strip center. Stratford Square reported tree damage and pieces of roofing material blown off the mall. Another large roof top air conditioning unit was thrown off its mounting at the medical offices on the southeast corner of

Scott Drive and Gary Avenue. The map along the bottom of pages 2 & 3 illustrates the path the tornado took moving quickly from west to east in a narrow corridor south of Schick and north of Army Trail roads.

Next, a portion of the Indian Lakes Subdivision suffered significant tree damage, as well as damage to roofs and other property. From there the tornado jumped over Bloomingdale Road and ripped through the Westlake Subdivision between Greenway Drive on the south and Edgewater Drive on the north. Norton, Sutherland, Surrey, Bridgewater Lanes and the area around Sterling Drive were particularly hard hit. Building damage was also sustained on the west side of Glen Ellyn Road in the Westwind Townhome Subdivision. Two townhome units were dislodged from the foundations on Stanyon Lane. Another touchdown damaged two buildings - affecting four apartment units at Deer Glen Apartments, just east of Glen Ellyn Road, where windows and doors were blown out, and portions of rooftops peeled back. This damage was also rated as an EF1.

In the storm's aftermath, the Village Damage Assessment revealed a total of 89 private properties, buildings and sites were impacted. Of these, 55 were considered "affected," 29 incurred "minor" damage and 5 incurred "major" damage. Six businesses were impacted with one suffering major damage. In addition, 61 public right-of-way and public property locations were identified in the Assessment as having sustained damage, particularly from downed trees and fallen branches.

AUGUST 4, 2008 TOR



A Night to Remember *(continued from previous page)*

Emergency crews, including police, fire and village services, consisting of forestry, streets, public works, building, engineering and utilities personnel responded to over 70 calls throughout the evening. Storm response work continued through Monday night and early Tuesday morning. Village Services response teams moved trees, limbs and debris making the streets passable until the damage could be fully assessed and recovery operations could begin the next day. Although the Village and residents sustained significant property damage, we are grateful no Bloomingdale residents were injured.

Mayor Iden executed a Declaration of Local Emergency on Tuesday morning August 5, 2008 to permit the Village Services Department to activate the DuPage County Public Works Mutual Aid System that allowed engagement of other communities' public works response teams to assist in the recovery efforts.

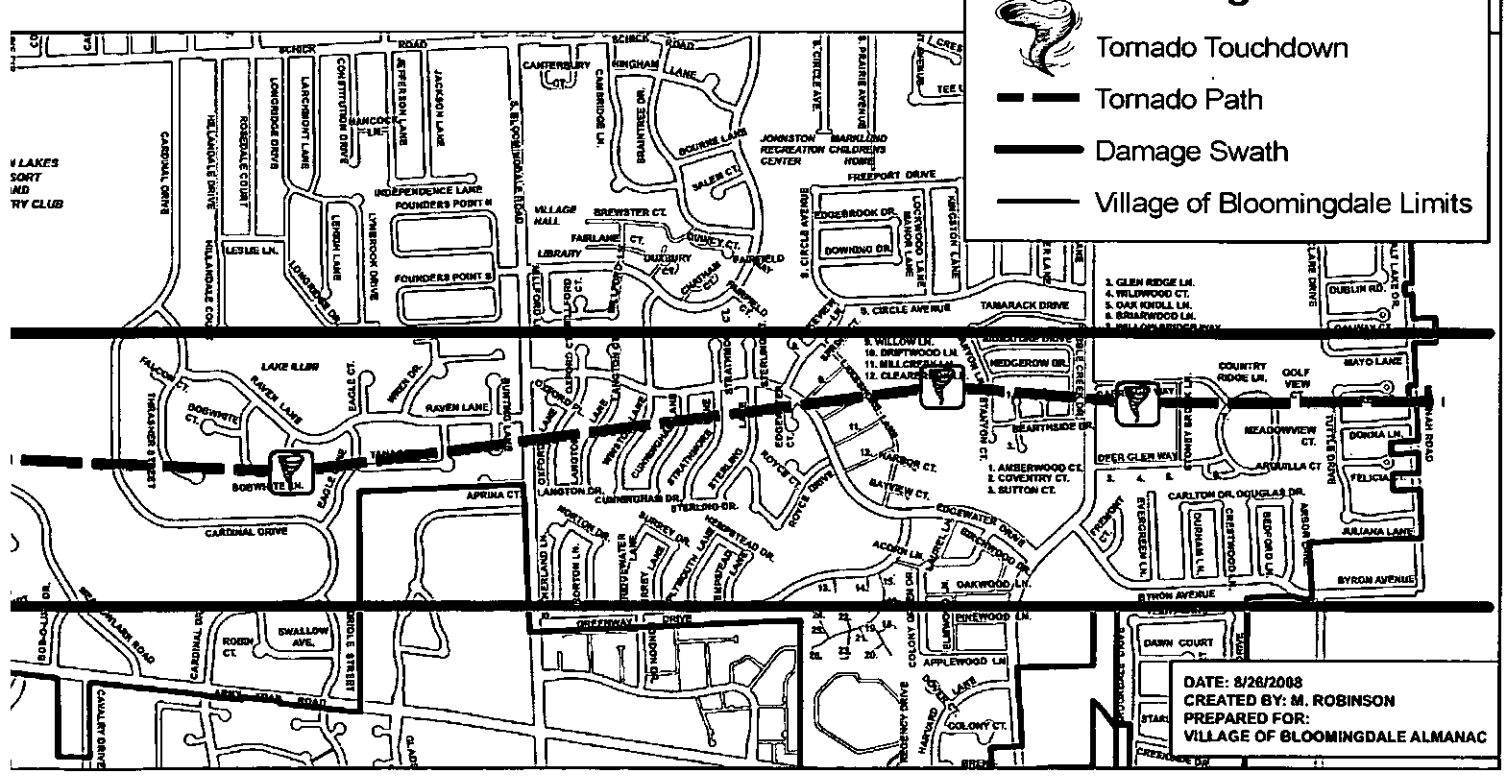
We had many comments from residents commending the quick and helpful response by Village employees. Mayor Iden adds his sincere appreciation to Village staff who worked long hours to get the cleanup accomplished as quickly as possible. We also extend thanks to the following communities who helped us out in the days following the tornado: the Public Works Departments of the Cities of Darien, Elmhurst, Naperville, Wheaton, and Villages of Bartlett, Carol Stream, Downers Grove, Glendale Heights, Lisle and Roselle. Also the Highway Departments of Naperville, Winfield and Milton Townships, as well the DuPage County Department of Transportation and the DuPage County Office of Emergency Management.

As a point of interest, the last time on record that a tornado hit Bloomingdale was in 1899 when a tornado took off the top of the Holstein mill and leveled their farm along Bloomingdale Road, just south of Schick Road (approximately across the street from the current Village Hall). The house and the barns were rebuilt on the same foundations, but what remained of the mill was only used to store grain. (Source: *Images of America Bloomingdale 2008*)



Photos courtesy of Kirk Steinbruecker and Village of Bloomingdale staff.

IADO DAMAGE PATH



Didn't Hear the Tornado Sirens?

The Almanac has published the severe weather siren system article periodically in recent years. Even though most of us have taken note of it, we might not have entertained the thought that the sirens would actually precede real tornado touch-downs in Bloomingdale. While some residents heard the sirens on Monday, August 4, many others did not. Following that evening, we need to re-visit the information previously presented in order to clarify any misconception.

While some of us thought the sirens were meant to be heard inside our homes, that is not the case. They are outdoor warning sirens. Depending on the direction and velocity of the wind, you may hear them inside. However, these sirens are actually only meant to warn anyone out of doors during this kind of violent weather, that they should take cover.

Indoors we should use television, radio or internet to monitor the weather conditions. A battery-operated radio is always a handy item in the event of a power outage. In fact, it has recently been suggested that in addition to having smoke detectors and carbon monoxide detectors, a weather radio should also be part of a home's standard emergency equipment. Weather alert radios are an excellent way to stay informed, are reasonably priced and can be operated with batteries. They will also wake you in case of storms at night. They provide weather advisories, watches and warnings.

For more information, see the Weather Emergency Alert Sirens article to the right. If you have any further questions regarding the severe weather sirens, please call Police Chief Tim Goergen at 630-529-9868.

What You Need to Know About Weather Emergency Alert Sirens

During severe weather, residents might hear a warning siren. While the Police Department actually activates the siren, information for activation of this warning system comes from the National Weather Service, State or Federal Agencies, local Public Officials and /or first hand observation. Most often, it comes from the National Weather Service's current information regarding storm conditions.

The Weather Emergency Alert system is activated when any of the following conditions are present:

- The Village of Bloomingdale is in the path of an approaching tornado
- Conditions exist for the development of a tornado within an approaching storm.
- A tornado sighting within the Village of Bloomingdale or nearby communities is confirmed.
- It has been confirmed that "damaging force" winds will be impacting the Village of Bloomingdale
- The National Weather Service has issued a Severe Storm/High Wind Warning indicating damaging force winds.

There is no differentiation in the sound of the warning siren for a tornado or other damaging winds. The siren is a steady tone which rings for three minutes and warns us of any of these weather concerns. No matter which weather reason causes the activation of the warning siren, residents are encouraged to proceed to an interior room on the lowest level of their home or business. They should then monitor local television, radio, weather alert radio or current weather data for the most up-to-date information.

The four weather sirens in Bloomingdale are located:

- off Glen Ellyn Road and Carriage Way by the Village's Eastside pump station;
- in Old Town near the rear of the old Schoolhouse;
- at Stratford Park; and at Gary and Lawrence.

The weather sirens are tested the first Tuesday of each month at 10:00 a.m.

We also have lightning detectors located at the Bloomingdale Golf Club and in all parks, except the newly opened Erie Park which will be addressed in the near future.

These detectors are made to alert people on these properties of the danger of lightning. These detectors are only operational during daylight hours when the public would be in the parks and on the golf course.

The "warning" signal is a solid tone approximately fifteen to twenty seconds in length. This tone indicates an actual lightning strike to ground has occurred within a ten-mile radius. You should seek appropriate shelter when you hear this signal.

The system will continue to monitor the lightning and after fifteen minutes of no lightning activity in that ten-mile area, the "All Clear" signal will sound. The "All Clear" signal is an alternating high / low tone, also fifteen to twenty seconds in length. The sound made by the lightning detectors is not meant to carry beyond their designated areas



Beware of Car Burglaries

Car burglary, which occurs when a vehicle is illegally entered (with or without force) and items are taken from inside, is one of the most frequent crimes reported to the police. There has been an increase of car burglaries reported to the Bloomingdale Police Department during the summer months. Many of the incidents involved an unlocked door or window and valuables in plain view.

Police officers are conducting foot patrols in residential and apartment complex areas in an attempt to apprehend offenders. But the police department seeks your help. Here are simple reminders that can help prevent or reduce your chances of becoming a victim of a car burglary.



Park your vehicle in a secure garage whenever possible. If you live in an apartment or condominium area without garage access, park your vehicle in a well-lit area close to a street or building entryway.



Lock all car doors, even when parked in your driveway or in a garage. An unsecured door is an easy opportunity and the most common point of attack in car burglaries. Also, properly secure the windows, paying special attention to small vent windows and sliding back windows.



Always remove your keys from the ignition—even in your garage. This will help prevent burglaries and car thefts.



Never leave personal belongings in plain view (including currency, GPS systems, laptop computers, etc.) or totally avoid leaving valuables in your vehicle. If you must store belongings in the car, hide them from view in a glove box, under the seats or in your trunk.



If your vehicle is burglarized despite your efforts, always report the burglary to police, even when nothing appears to be missing. Your information could reveal a crime pattern in a specific area of town and greatly increase the likelihood of catching the burglar. Note: Please report all suspicious activity in your neighborhood; it can make a difference.

Remember that the police are unable to solve crimes that go unreported.

Any questions or concerns regarding this information or other crime prevention issues, please contact Officer Dawn Odoi of the Bloomingdale Police Department at (630) 529-9868.

WELCOME
Bloomingdale is a
CRIME WATCH
community

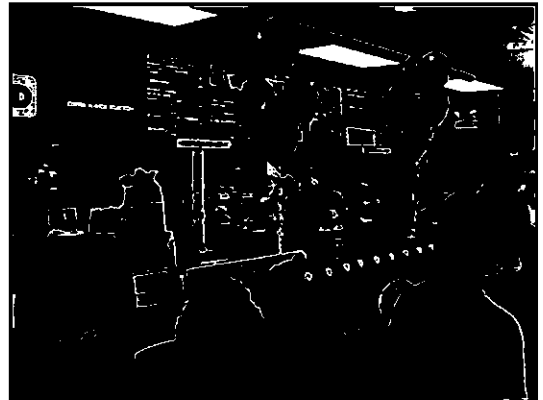


We immediately report
all suspicious activities
to our Police Department

Village Says 'Thanks!' to Lake Street Dunkin' Donuts for D.A.R.E.-ing To Team Up With Us!

The Bloomingdale Police Department sends a "Thank You" to the management and staff of the Dunkin' Donuts at 169 E. Lake Street for their generous donation to the Bloomingdale D.A.R.E. Program. During the Grand Re-Opening of the Dunkin' Donuts store on Saturday, August 2nd, Dunkin' Donuts initiated the "Donate for a Dozen" benefiting the Bloomingdale D.A.R.E. Program. Dunkin' Donuts provided dozens of donuts and travel mugs to citizens who contributed a \$3.00 or more donation.

Because of their generosity, the two-hour event raised \$328.38 for the D.A.R.E. students of Bloomingdale. Again, thanks to the Dunkin' Donuts staff and management for partnering with the Bloomingdale Police Department in the crime prevention efforts for the children of this community.



The Dunkin' Donuts on Lake Street has a whole new look, same great donuts (and more).



Mayor Iden joined Akhtar Ramzanali, for the festivities at the new Dunkin' Donuts. He is the father of Dunkin' Donuts franchisee Rishad Rajabali.

Village's Fall Branch Collection Program Begins October 20

The one-week fall branch collection will be conducted by Kramer Tree Specialists, Inc. under the direction of the Village Forestry Division beginning on Monday, October 20th. The program is only available to single family detached residences. Townhome residents should contact their association regarding branch collection.

Branch Collection Guidelines:

- Branches must be out by 7:00 a.m. on Monday, October 20th.
- Woody branches ½ inch to 6 inches in diameter are the only items that will be picked up. (Note: any spikes, hooks or other metal objects must be removed).
- Long lengths are favored provided branches do not block sidewalks and pedestrian access.
- All branches should be placed at the curb or pavement edge and stacked in an orderly fashion with the cut or larger end towards the pavement.
- Thorny tree branches should not be concealed inside piles. These require special care as to not cause injuries to the workers.

The following items are unacceptable:

- Branches left out in a tangled mess.
- Woody branches under ½ inch in diameter.
- Leaves, vines, small (under ½ inch in diameter) flexible willow stems, herbaceous plants and weeds.
- Large stumps, roots and root balls.*
- Wooden fencing and construction lumber.*

The above items are considered yard waste and may be placed in bags or cans with tags for Allied Waste (our refuse hauler) pick-up. Yard waste pick-ups commence April 1st and continue through November 30th. Questions concerning Allied Waste pick-ups should be directed to 847-429-7370.

*Large stumps, roots and root balls are considered trash and do not require a yard waste tag, provided each item is of manageable size and under 50 pounds. Wooden fencing and construction lumber are also considered trash, but require a special pick-up. Contact Allied Waste for more information.

In the event of severe storms, the Village will provide storm damage collection of woody branches ½ inch to 6 inches in diameter. Please contact the Forestry Division at 630-671-5800 within 72 hours of storm for branch collection.

Your cooperation is greatly appreciated and will ensure a successful program.



Residents who still have branches from the recent tornado damage may include them with the Fall branch pick-up as listed to the right.

VILLAGE ALMANAC

is published bi-monthly by the

Village of
Bloomingtondale

Mary Ellen Johnson,
Editor

Address all correspondence to:

Village of Bloomingtondale
201 S. Bloomingtondale Road
Bloomingtondale, IL 60108

671-5600

Is Your Address Posted?

Remember, every second counts in an emergency situation. In order for emergency personnel to locate your house, your address must be displayed either on your mailbox and/or house. Large reflective numbers are easier to read when it is dark. They only take minutes to install and could save precious minutes should you have an emergency.

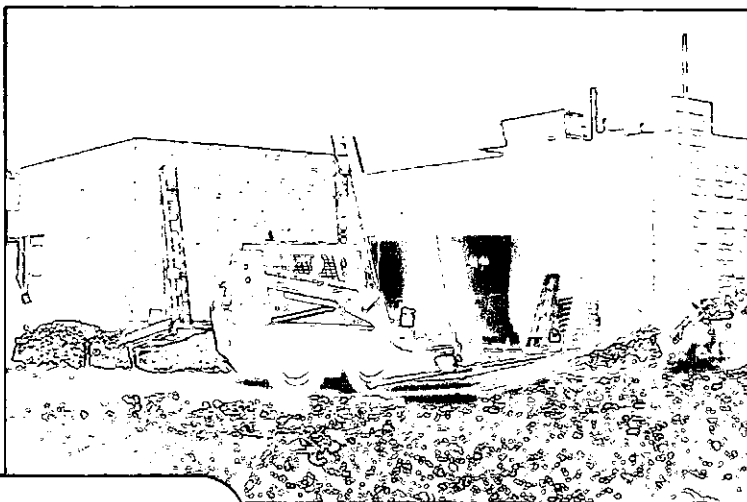
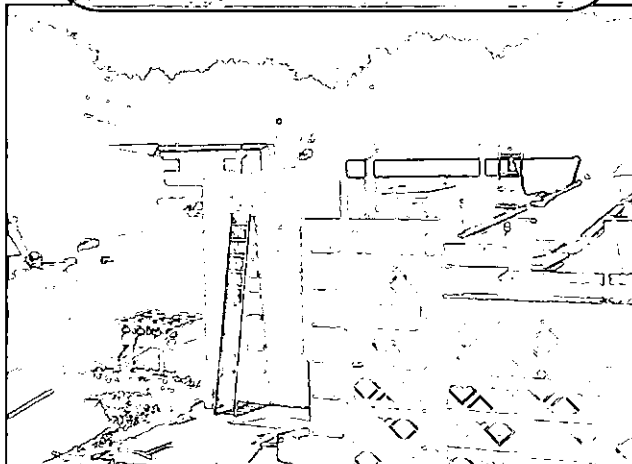
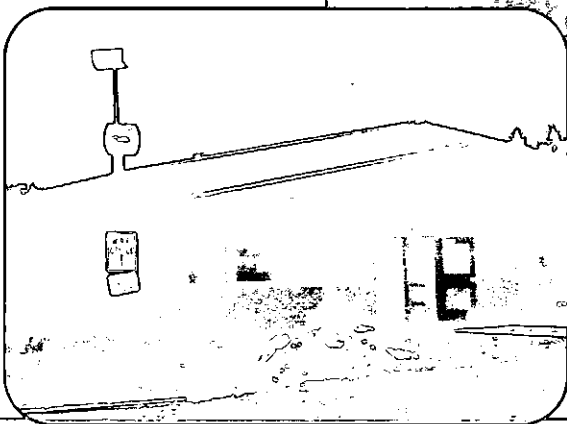
Water Reclamation Facility Improvements Continue

Construction of the Phase 1 Improvements is nearing completion at the Water Reclamation Facility on Glen Ellyn Road. This is the first phase of improvements recommended in the Village's Facility Plan Amendment approved by the Illinois Environmental Protection Agency. The total project will cost approximately \$11 million and is financed through a low interest loan from IEPA.

In total the new upgrades to the facility will include a first flush tank for excess flow to the facility, two odor control systems, biosolids building and handling equipment, improved air handling within the digesters and a lab/office building.

These upgrades will enable the facility to meet and maintain the parameters of the NPDES permit requirements.

The facility currently handles a peak capacity flow of 8.625 MGD (million gallons per day) and an excess flow capacity of 15.1 MGD. The facility falls under the National Pollution Discharge Elimination System (NPDES) permit requirements.



Treat Your Flowers and Shrubs!

Mulch is available once again at the Public Works Building, 305 Glen Ellyn Road. Call 630-671-5800 for more information.

Important Village Phone Numbers



EMERGENCY NUMBERS

POLICE DEPARTMENT 9-1-1
FIRE OR PARAMEDICS 9-1-1

VILLAGE HALL 630-893-7000

201 S. Bloomingdale Road
Hours: Monday through Friday
8:30 a.m. to 4:30 p.m.

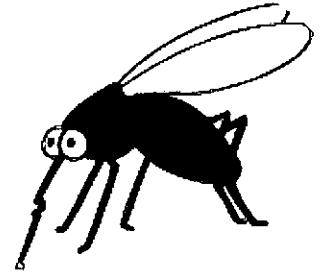
www.villageofbloomingdale.org

DEPARTMENTS

Police Administration/Records	630-529-9868
Fire Administration Office	630-894-9080
Village Administration Offices	630-671-5610
Mayor's Office	630-671-5600
Finance Department	630-671-5630
Water Billing	630-671-5650
Village Services	
Administration	630-671-5690
Building & Zoning Permits	630-671-5660
Engineering	630-671-5676
Drainage	
Sidewalk	
Bike Path	
Public Works	630-671-5800
Streets/snowplowing	
Forestry	630-671-5804
Utilities	630-671-5830
Water/sewer concerns	
Watermain breaks	
Water Reclamation Facility	630-671-5830

First Case of West Nile Virus in 2008 Reported in Kane County

The first case of West Nile Virus in Illinois was reported last month in Kane County. Although this was the first case in 2008, conditions have been favorable for the virus. The Illinois Department of Public Health reminds residents they need to remain vigilant and take preventive measures against mosquito bites. We may still experience hot summer temperatures and possibly more warm weather in the fall, so it's important to continue to take the following precautions:



- Avoid being outdoors when mosquitoes are most active, especially between dusk and dawn. Use prevention methods whenever mosquitoes are present.
- When outdoors, wear shoes and socks, long pants and a long-sleeved shirt, and apply insect repellent that includes DEET, picaridin or oil of lemon eucalyptus according to label instructions. Consult a physician before using repellents on infants.
- Make sure doors and windows have tight-fitting screens. Repair or replace screens that have tears or other openings. Try to keep doors and windows shut, especially at night.
- Eliminate all sources of standing water that can support mosquito breeding, including flower-pots, clogged roof gutters, old tires and any other receptacles. Change water in bird baths weekly. Properly maintain wading pools and stock ornamental ponds with fish. Cover rain barrels with 16 mesh wire screen. Report areas of stagnant water in roadside ditches, flooded yards and similar locations that may produce mosquitoes to the Clarke Mosquito Hotline at 800-942-2555.

Additional information about West Nile virus can be found on the Department's Web site at www.idph.state.il.us/envhealth/wnv.htm. More information is available at the West Nile Virus Hotline (866-369-9710) and the DuPage County Health Department (630-682-7979).

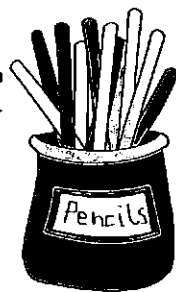
REMEMBER: The mosquito season doesn't end officially until the first frost.

National Night Out, August 5, 2008

More than 800 people came out to spend the evening with friends and neighbors at The Oasis



Schools Are Open: Use Extra Caution Around The Kids



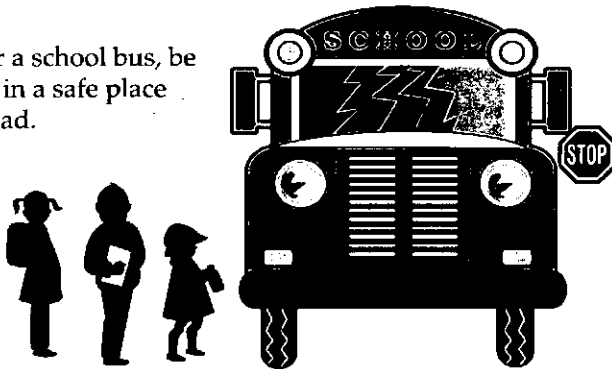
Another new school year has begun and it is an excellent time to review school safety with your children. "Common sense" rules can help promote safety at school and at play. Here are a few simple safety tips that can benefit children of all ages.

Walking to and from school:

- Choose a safe route for walking to and from school. Avoid walking by vacant lots, fields, or other areas where there aren't many people around.
- Use the buddy system. It is safer to walk in a group than by yourself.
- If you bike, skate or skateboard to school, wear a protective helmet on your head. Don't forget to lock up your bike, skates or skateboard at school.
- Cross the street at corners or crosswalks.
- Be careful when crossing the street; remember to stop and look in all directions.
- Never talk to strangers or accept gifts or rides from people you don't know. **If a stranger approaches you, RUN- YELL- TELL an adult or call 9-1-1.**
- Let your parents know if you need to stay late at school or if you plan to go to a friend's house instead of going straight home.
- If you see something that you think isn't right, tell a teacher or your parents right away.

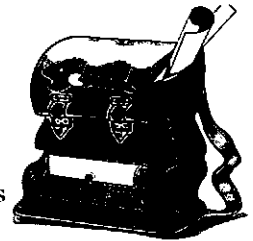
On the bus:

- While waiting for a school bus, be sure that you are in a safe place away from the road.
- Be on time and only ride the bus assigned to you.
- When the bus approaches, stand at least three giant steps (six feet) away from the curb, and line up away from the street.
- Once the bus arrives, wait until the bus stops, the door opens, and the driver says it is okay before entering the bus. Enter in an orderly fashion. Be courteous to the driver and do what you are told at all times. Take your seat quickly and stay in your seat for the entire ride.
- Keep your arms and head inside the bus and never throw anything out of the windows. Help keep the bus clean by picking up trash and throwing it in a garbage can. Never write on or damage the bus seats.
- When you exit the bus, be very careful if you have to cross the street in traffic. Do not depend on traffic to stop because sometimes drivers don't pay attention to the actions surrounding a school bus. Always cross the street in front of the bus, and look both ways for cars before you cross the street.



At school:

- Stay away from strangers who hang around the playgrounds or bus stops. **A stranger is anyone that you do not know very well.** Do not accept anything from a stranger and tell an adult immediately if a stranger is bothering you or other children.
- If you see something that makes you uneasy or you think isn't right—a stranger hanging around school, a bully bothering other youths, vandalism or graffiti—tell a teacher or your parents right away.
- Learn to settle arguments with words, not fists. Walk away from an argument instead of fighting. Never bring weapons of any kind to school and tell a teacher immediately if someone else has a weapon.



With schools back in session, we want to remind everyone to be careful when traveling through these areas during school hours. Kids are not only active before and after school, but also during recess and physical education classes. Students acting as crossing guards are responsible for the safety of others in school zones and residential areas. **The school zone speed limit is twenty (20) miles per hour.** Please keep this in mind when traveling near school and take extra precaution for the sake of the children.



Thank you
and have
a safe
school
year!!!



TEE IT UP

at Bloomingdale Golf Club!

The Teeing Ground

As we wind down another golf season, we sure cannot complain about this summer's nice weather. Although the days are getting shorter, there remain many opportunities to get in those last rounds of golf. Fall golf is considered by many to be the best time of the year to play golf. Plan on getting to the golf course during this beautiful time of the year before the snow begins to fly!

As a reminder, residents of Bloomingdale may make tee time reservations 10 days in advance (call the pro shop) as long as they provide proof of residency (if we do not have it currently on file). For convenience, you may also book tee times on-line (7 days in advance) and see the golf programs we have to offer on our website at: www.bloomingdalegc.com. Additionally, there are times when "Specials" are offered on our website. Don't hesitate to check and see if any specials are being offered. To do so, click on the icon, "View internet specials" located on the home page in the lower left corner.

As a reminder, those of you who have participated in our "Loyalty Program" and have earned enough award dollars need to redeem them by the end of the season. Don't let them expire! If you are uncertain how many award dollars you have accumulated, give us a call and we will let you know.

Finally, here are some dates to keep in mind; fall rates begin the 1st week in October and our annual "Fall Scramble" is scheduled for Sunday, October 19th. The event will be a 9:30 am shotgun start and the field will be limited to 36 foursomes. The fee to participate is \$95 per player and we ask for all players to register a complete foursome. If you do not have a group to play with, contact the Head Golf Professional, and he will do his best to find you a group. More information and registration forms are available in the golf shop or on-line.

Happy Golfing,
The Staff at Bloomingdale Golf Club



Looking for Employment?

The Village of Bloomingdale posts its vacant positions on the Village website at www.village-ofbloomingdale.org. In order to be considered for employment, qualified applicants should complete an Employment Application form. Applications and other related forms are available on the Village's website under "Employment Opportunities" and at the Village Hall. Applicants may also submit a resume in addition to the required forms, if they wish.

Completed applications and forms may be mailed to or dropped off at the Village Hall, 201 S. Bloomingdale Road, Bloomingdale, IL 60108. The main phone number for the Village of Bloomingdale is 630-893-7000. Please be aware that the Village of Bloomingdale will accept applications for regular employment for currently posted vacancies only.

Applications for the position of Police Officer are available separately from the Board of Police and Fire Commissioners during specific times when employment testing is scheduled. For more information about the Police Officer hiring process, visit the Village's website and click on "Employment Opportunities" and "Police Officer Applications."

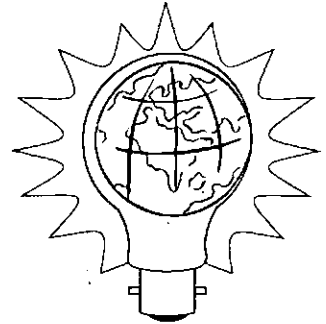
The Village of Bloomingdale is an Equal Opportunity Employer. The Village of Bloomingdale is a no smoking facility in accordance with the requirements of Smoke Free Illinois.

Get a Great Bargain on a Book

The Friends of the Bloomingdale Public Library host their annual Sidewalk Book Sale on Saturday, September 20 from 9 a.m. to 3 p.m. The sale will include thousands of books including the nicest copies of recent withdrawals and donated materials, as well as VHS tapes, large print books, paperback romances, audio books on cassette, and children's videos and audio books. In case of inclement weather, the sale will be held inside on the lower level of the library. The Friends will also have the 2009 Entertainment coupon books, Chicago - West edition, on sale for \$20 each.

Free CFL Light Bulbs -- Get 'em While They Last!

Lighting accounts for close to 20 percent of the average home's electric bill. CFLs use up to 75 percent less energy than incandescent light bulbs, and last up to 10 times longer. If every home in America replaced just one incandescent light bulb with a CFL it would reduce greenhouse gas emissions (that contribute to global climate change) equal to that of 800,000 cars. Residents may stop by the Village Hall, 201 S. Bloomingdale Road, to pick up four complimentary CFL bulbs **while supplies last**. Call 630-893-7000 with questions.



For more information on CFL bulbs and disposal/clean-up, and recycling, visit www.epa.gov/mercury or www.energystar.gov/cfls

Change in Villagers Auction Date

The Villagers of Bloomingdale announce their annual Auction will take place on Thursday, October 16 instead of October 2, as previously advertised. The charitable event begins at 6:30 at the Bloomingdale Golf Club, 181 Glen Ellyn Road. For more information call Maureen at 630-351-3345 or Joan at 630-529-9773.

EVENTS

Women's Club Hosts Ice Cream Social on September 11

The Bloomingdale Women's Club will kick-off their 2008-09 year with a "Newcomers Ice Cream Social" on Thursday, Sept. 11 starting at 7:00 p.m. Also, a fun program will be presented on "Dressing for Your Body Shape."

Women of all ages and stages of life in Bloomingdale and surrounding communities are welcomed to join the social and philanthropic organization which has been active for more than 35 years.

Meetings are the second Thursday of the month in the 2nd floor lounge at Sunrise Assisted Living Center on Lake Street, across from Portillo's. Contact membership chair Gayle at 630-539-1615 for more information.

Bloomingdale Church Hosting 911 Remembrance

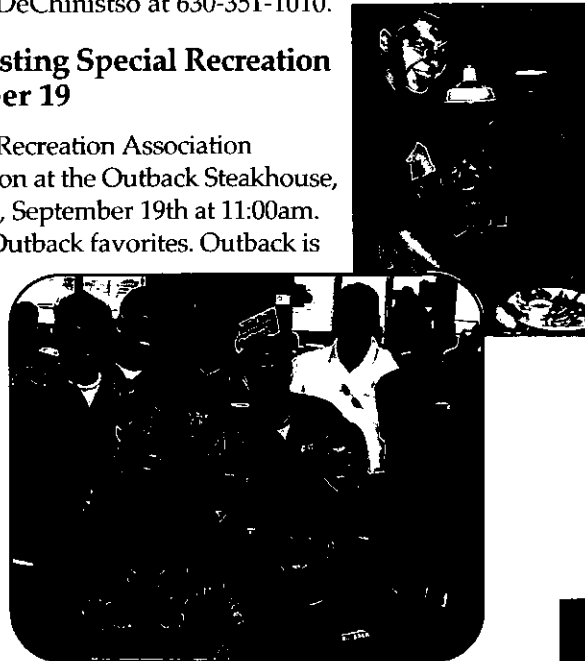
Bloomingdale Church, 264 Glen Ellyn Road, will host the Bloomingdale Police Department & the Bloomingdale Fire District in an annual tribute on September 11 at 9 p.m.. The community is welcome. Bloomingdale Church has been doing this every September 11 for the past four years. The short service consists of thanks to the Fire and Police men & women by citizens of the community, a moment of silent remembrance at exactly 9:11 PM and a short response by the Police and Fire Chiefs in the main sanctuary at Bloomingdale Church. A parade of the fire and police vehicles will arrive at the church at 9 PM and are met at the front of the church by the children in a candle vigil.

Garden Club's September Program Features Eco-Gardens

The Garden Club's September 17 meeting features "Creating Eco-Gardens on Sterile Residential Landscapes" presented by Dennis Paige, Environmental Educator/Interpretive Naturalist. Program begins at 6:30 p.m., on the lower level of the Bloomingdale Police Department, 201 S. Bloomingdale Road (in the back of the Village Hall). Paige has successfully utilized native landscaping to create interesting and ecologically sound gardens (including a rain garden) at the Schaumburg Condo Complex in which he resides. This free program will address environmentally friendly natural landscaping. For more information, contact Debbie DeChinisto at 630-351-1010.

Outback Steakhouse Hosting Special Recreation Fundraiser on September 19

Join Western DuPage Special Recreation Association (WDSRA) for a special luncheon at the Outback Steakhouse, 166 S. Gary Avenue on Friday, September 19th at 11:00am. The menu will be filled with Outback favorites. Outback is generously donating the entire luncheon and all proceeds from ticket sales will help support the recreational programs that WDSRA provides for individuals with special needs. WDSRA serves nine communities including Bloomingdale and Roselle. Tickets are \$25 and are available by calling Lea Jackman at (630) 681-0962.



Bloomingdale Church Gearing Up for Awana Children's Club

Bloomingdale Church, 264 Glen Ellyn Road, is gearing up to begin another year of Awana, its high energy children's club.

Awana includes active gym games, inspirational club times and foundational moral/spiritual instruction from the Bible.

Registration begins on September 17th from 4:15 thru 8:30 p.m.

The first club meeting is Wednesday, September 24th.

There are two sessions weekly:

Afternoon Session -

4:15-5:45 pm

3 years old through 2nd grade

Evening Session -

6:55-8:30 pm

3 years old through 6th grade

For more information contact Bloomingdale Church at 630-894-0090 or email

info@Bloomingdalechurch.org



EVENTS



Third Annual Walk-a-Dog-a-Thon Set For September 28

The Third Annual Walk-a-Dog-a-Thon takes place at Springfield Park Nature Trail at 2 p.m. on Sunday, September 28. This year, in addition to sponsorship by the Bloomingdale Lions Club, the Westfield Leo Club, and Erickson School Cub Scout Pack, the Bloomingdale VFW will be joining in the event. There are many veterans who are in need of assistance dogs.

Registered dogs and walkers can win a prize for tallest dog, oldest dog walker, youngest dog, etc. Prizes also awarded to the three "Top Dogs" who raise the most money. Registration is \$15 in advance; \$20



on the day of the event. Enter a raffle for a quilt made by Jo Ellen Iden.

For a registration envelope, contact bloomingdalelion@netscape.net, call 630-894-7394 or visit www.bloomingdalewalkadogathon.org. One hundred percent of the proceeds will be donated to Canine Companions for Independence, a non-profit organization that raises and trains dogs for the physically disabled.

Rotary Hosting 'Bags Tournament' on September 27

Last year the Bloomingdale-Roselle Rotary hosted a Bags Tournament as part of its 10th anniversary celebration. It was such a success they are repeating the event. The tournament will take place on Saturday, September 27th at the American Legion Hall, 344 East Maple Street, Roselle. Team registration begins at 11:30 a.m. The tournament starts promptly at 12:00 noon. The team entry fee is \$50.

- First Prize: \$500.00
- Second Prize: \$250.00

Food and drink will be available for purchase. Sponsorship opportunities are available for \$100, \$250 and \$500.

Go to www.brrotary.org for more information about Rotary and Bean Bag Tournament FAQ's. If you still have questions, call Ken Gross at (630) 963-3224.

Cash Prizes Offered for Audio Essay Contest

For the year 2008-2009, the Bloomingdale VFW Post 7539 is sponsoring a "Voice of Democracy" audio essay contest about "Service and Sacrifice by America's Veterans Benefit Today's Youth by" The Voice of Democracy is a national audio essay program for our nation's high school students, which annually provides more than \$3 million in college scholarships and incentives to 9th, 10th, 11th and 12th graders across the nation.

Five hundred dollars in total prizes (1st, 2nd, 3rd Place) will be awarded by the Bloomingdale VFW Post 7539; the 1st place winner is eligible for district and possibly state and national prizes.

For an entry form, go to www.geocities.com/vfw7539/vod.htm or call Post 7539's chairman Bill Bahr at 630-307-3634. Entries in the Voice of Democracy Competition MUST be sponsored by a VFW Post. Deadline for submissions is November 1, 2008.

They Came from Korea for a Look at Miracle Field

Members of the Disability and Human Rights in Action (DHRA) organization, an advocacy group from South Korea, visited Western DuPage Special Recreation Association (WDSRA) last month. Members traveling from Seoul, South Korea spent the day observing and interacting with the WDSRA's Carol Stream Rec and Roll day program group as well as visiting the Miracle Field in Roselle.

The goal of the DHRA is to change the current prevalence of large institutions being used to house individuals with disabilities in South Korea. The hope is that more individuals could realize independent living and full integration into the community.

The group, including lawyers, social workers and a professor, were primarily interested in observing the Rec and Roll group as they represent adults with disabilities thriving in a community setting. Additionally, a visit to the Miracle Field was included because its unique form and function allow full participation to those in mobile devices. The group was very impressed with the Miracle Field for its accessibility.



One of the South Korean visitors enjoyed a game with members of the WDSRA day program group.

WANTED:

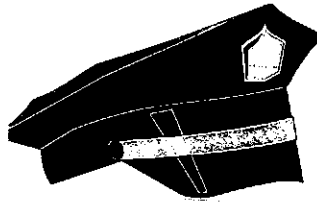
Individuals for the Bloomingdale Citizen Police Academy

TOPICS: Radar Enforcement, D.U.I. Awareness, Accident Investigation, Criminal Law, Juvenile Law, Use of Force, Firearms Role-Playing Scenarios, Crime Scene Processing and Tour of the Police Department.

PRESENTERS: Bloomingdale Police Officers

DATE/TIME: Wednesdays
September 24th to November 12th, 2008,
at 6:30 P.M.

LOCATION: Training Room
(Bloomingdale Police Department)



NO FEE FOR CLASSES OR INSTRUCTIONAL MATERIAL

All are welcome to attend

Refreshments will be served

Please contact Officer Dawn Odoi at (630) 529-9868
for further information

EDUCATION PROMOTING UNDERSTANDING

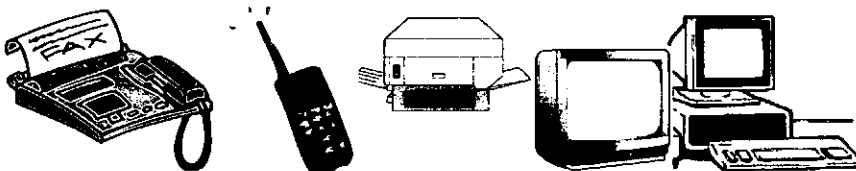
Recycle Your Old Electronics To Protect The Environment

Bloomingdale Township is sponsoring a monthly electronics recycling program. Residential electronics can be dropped off at no charge at the Township Garage, 123 N. Rosedale Road in Bloomingdale. No business electronics are permitted.

The following items are accepted:

computers	CPUs	hard drives	monitors	flat panels
keyboards	mice	radios	microwaves	laptops
printers	cell phones	UPS systems	PDU's	
phones	DVD players	VCR's	televisions	
fax machines	stereo equipment			

Items are accepted on the first Saturday of every month (except holiday weekends) from 8:00 a.m. to 12:00 noon. For more information call the Bloomingdale Township Highway Department at 630-529-5221.



Protect Yourself From Identity Theft: Safely Dispose of Old Documents On September 13

The DuPage County Environmental Committee is sponsoring a Document Shredding Event from 9:00 a.m. to 12:00 noon on Saturday, September 13. The event takes place in the Village of Villa Park at the North Metra Parking Lot, (349 North Ardmore, between North Avenue and St. Charles Road).

State-of-the-art mobile shredding trucks are utilized, which are faster, more efficient, and have a high-volume destruction process. This will save you time and money if you are currently doing your own shredding.

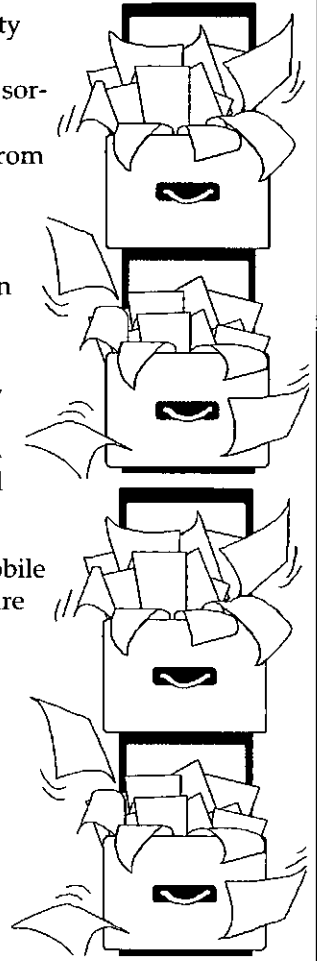
Destruction is done quickly while you watch and 100% of the paper is recycled.

Consider shredding the following types of documents:

- bank statements
- medical forms
- personal files
- tax forms
- receipts

Only residential documents are accepted and there is a limit of three boxes or three paper grocery bags. No documents will be accepted from businesses. Paper only. Staples and paper clips are acceptable. No binder clips, binders, hard cover books etc.

For more information call (630) 407-6700 or visit www.dupageco.org and click on "Waste" quick link.



Do you have a family member in the Armed Forces?



Do you have a son, daughter, or spouse serving in the Armed Forces (they don't have to be in Iraq or Afghanistan)? If yes, then join us for an informational breakfast on September 27th!

Do you know of someone who has a son, daughter, or spouse serving in the Armed Forces? If yes, then call them so they can join us for an informational breakfast on September 27th!

Would you like to know if your returning veteran is exhibiting signs of Post Traumatic Stress Disorder or perhaps Acute Traumatic Stress Disorder? If yes, then please join us for an informational breakfast on September 27th!

Would you like to know about the benefits and programs from the County, State, and Federal Government that are available to help transition your son, daughter, or spouse back to civilian life? What about finding a job when your family member gets discharged?

Or, would you just like to meet other families who have sons, daughters, and spouses serving? Then, please, join us for this FREE breakfast on September 27th!

Bloomington/Roselle VFW Post 7539, in cooperation with Trinity Caring Ministry, is sponsoring an informational breakfast on Saturday, September 27th, from 8:30-11:00 AM at the Trinity Family Life Center, to address some of the issues you might face when your loved one(s) come home, as well as to provide an opportunity for you to meet others who also have relatives serving in the Armed Forces. Space is limited, so please complete the registration early.

To register, please complete the form below and return, no later than September 20th; to the Trinity reception desk or fax to 630-529-5677:

Your name: _____

Your phone: _____

Your email (optional): _____

Family Member Serving/Relation: _____

Branch of Service: _____

How many family members will be attending the breakfast? _____

If you don't have a family member in the service, but know of a family that does, please give this form to them and make them aware of this informational breakfast.

Any questions, please call Joe Palmer, Post Commander, at 630-258-8745.

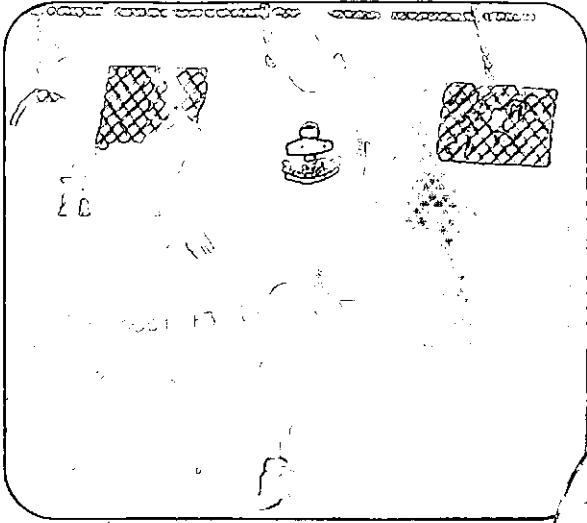
VFW Post 7539
101 Fairfield Way
Bloomington, IL 60108
www.vfw7539.org

Trinity Family Life Center
405 S. Rush Street
Roselle, IL 60172

Village of Bloomingdale
201 S. Bloomingdale Road
Bloomingdale, Illinois 60108

PRESORTED
STANDARD
U.S. POSTAGE
PAID
Bloomingdale, IL
60108
Permit No. # 16

POSTAL PATRON LOCAL
BLOOMINGDALE, ILLINOIS 60108



Summer Fun!

*Library's Ice Cream Social,
Heroes Vs. Half Pints, and
National Night Out*

